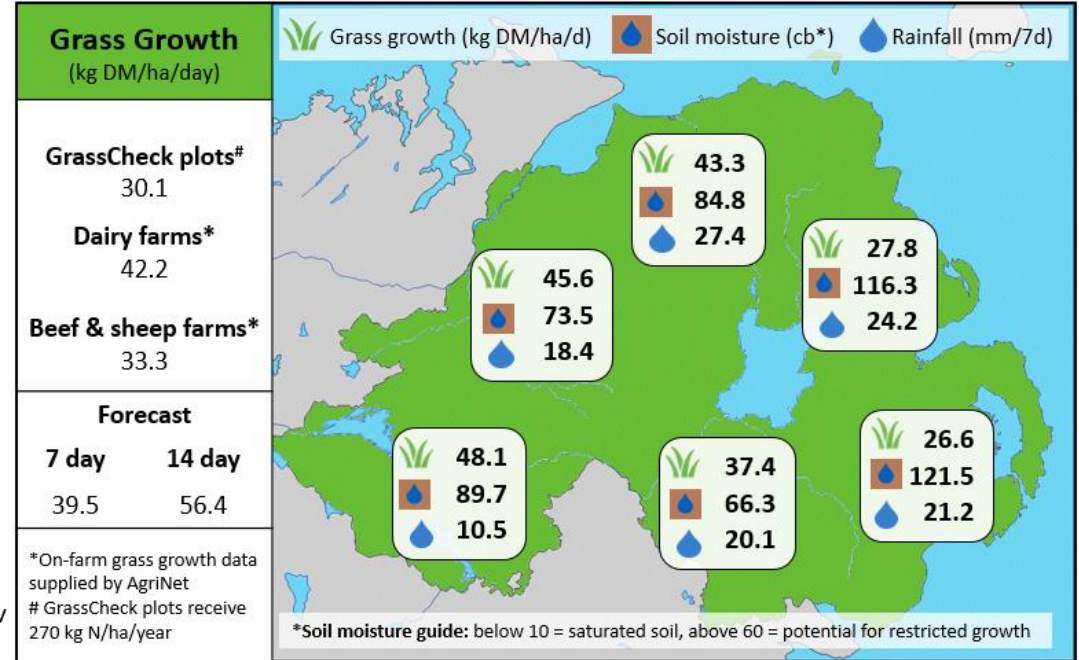
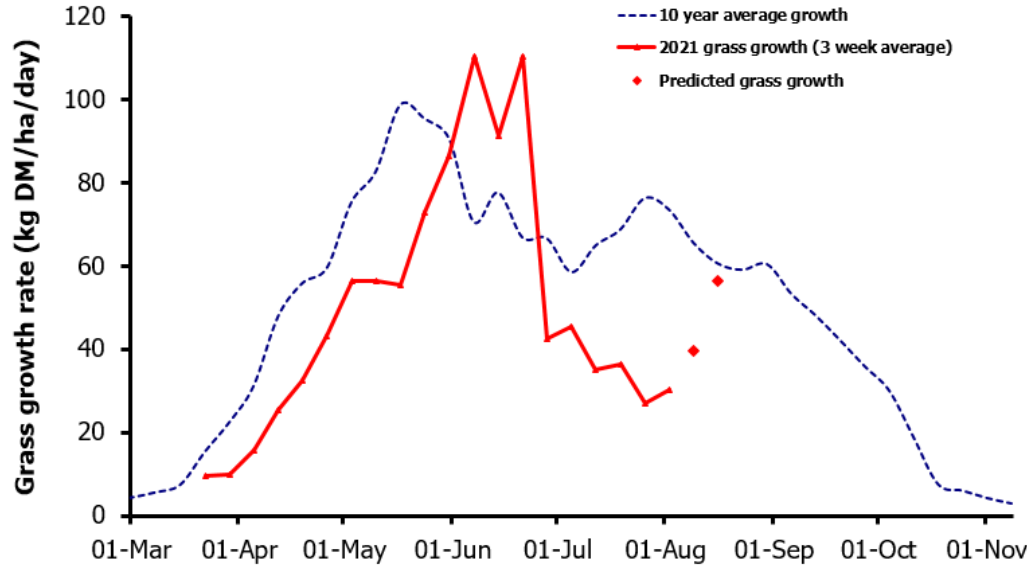


## Week Beginning 2<sup>nd</sup> August 2021



### MANAGEMENT NOTES:

- Despite rainfall across the province over the past 10 days, soil moisture deficits are still present. Overcast and wet conditions predicted over the incoming 10 days are leading to a predicted bounce back in grass growth.
- Total grass growth until the end of July in 2021 was just 75.5% of the long term average at 6.93 T DM/ha, 2.25 T DM/ha down from 9.18 T DM/ha.
- Apply N according with your fertiliser plan if 5-10mm of rain is forecast.
- As grass growth returns to meet demand, correct sward quality ASAP by premowing to ensure clean swards to start to build autumn covers on.
- Start to build average farm cover (AFC) from 1<sup>st</sup> Aug. Target an AFC of 2,350 kg DM/ ha by mid Aug and 2,600 kg DM/ ha by early Sept.

Value of Grass		Grass Quality	
Dairy – maintenance plus (M+) (kg/cow/day)*	15.4	DM (%)	20.6
Growing animals – daily live weight gain (kg/head/day)**	1.04	CP (% DM)	17.4
*M+ calculated assuming: 650kg cow, and 13.5 kg DMI. Maintenance=75 MJ/day, 5.3 MJ/kg milk		WSC (% DM)	14.5
**Beef daily gain assuming: 300 kg beef steer, and 6.6 kg DMI. Maintenance=35 MJ/day, 40 MJ/kg gain		ME (MJ/kg DM)	11.6