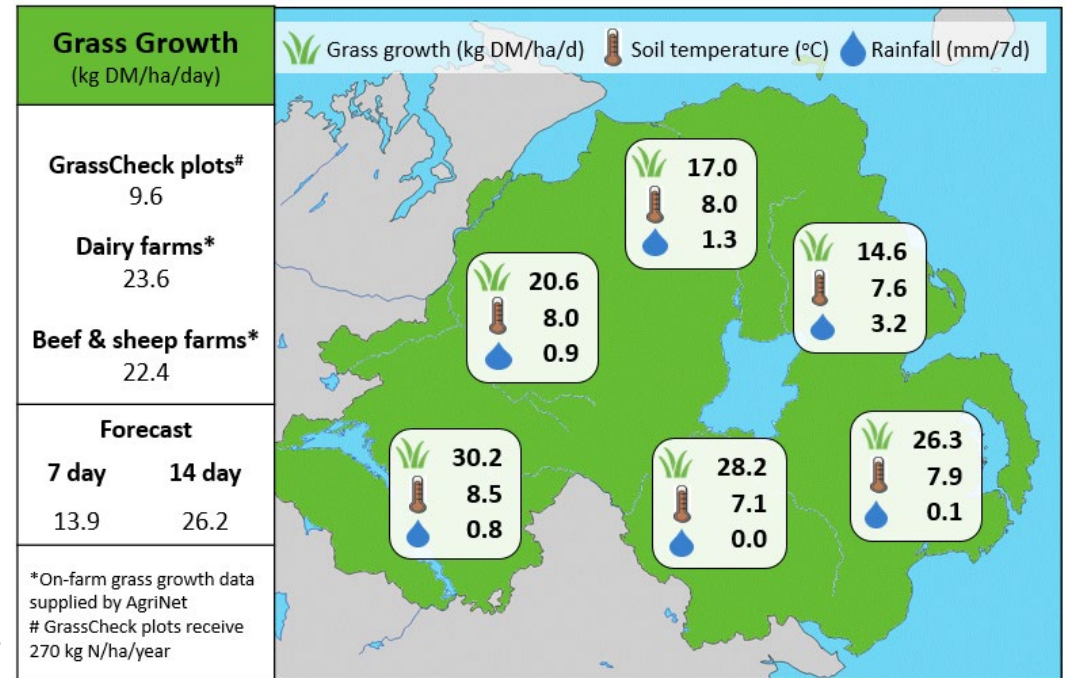
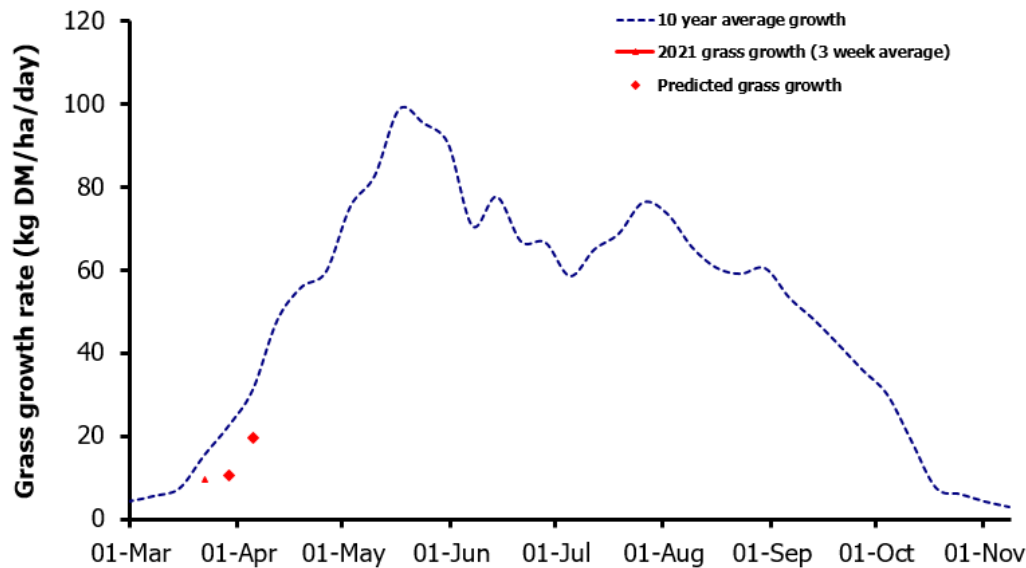


Week Beginning 22nd March 2021



MANAGEMENT NOTES:

- After a relatively dry and settled fortnight in March, soil temperatures are currently averaging 7.9 °C and grass quality is good. Plot growth is 9.6 kg DM/ha/d, 64% of the long-term average (15.1 kg DM/ha) for late March.
- Despite more unsettled conditions being forecast, every effort should be made to maintain or introduce grass into animal's diets, practicing on-off grazing when required and turning animals out with an appetite to graze.
- Walk the farm regularly and utilise all available infrastructure during unsettled weather, targeting the drier areas and lighter covers for grazing with strip wires. Graze higher covers and awkward areas when possible.
- Have a plan of when to commence the second grazing round and follow grazed paddocks with slurry or fertiliser according to your nutrient plan.

Value of Grass		Grass Quality	
Dairy – maintenance plus (M+) (kg/cow/day)*	19.5	DM (%)	20.6
Growing animals – daily live weight gain (kg/head/day)**	1.09	CP (% DM)	21.6
*M+ calculated assuming: 650kg cow, and 15 kg DMI. Maintenance=75 MJ/day, 5.3 MJ/kg milk **Beef daily gain assuming: 300 kg beef steer, and 6.6 kg DMI. Maintenance=35 MJ/day, 40 MJ/kg gain		WSC (% DM)	13.1
		ME (MJ/kg DM)	11.9