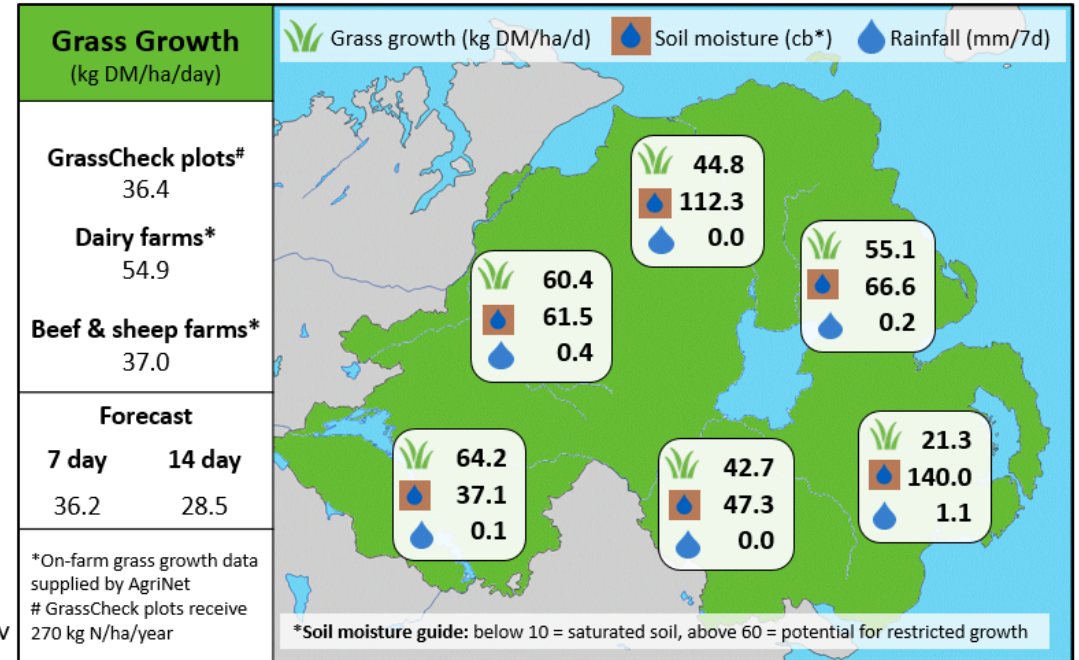
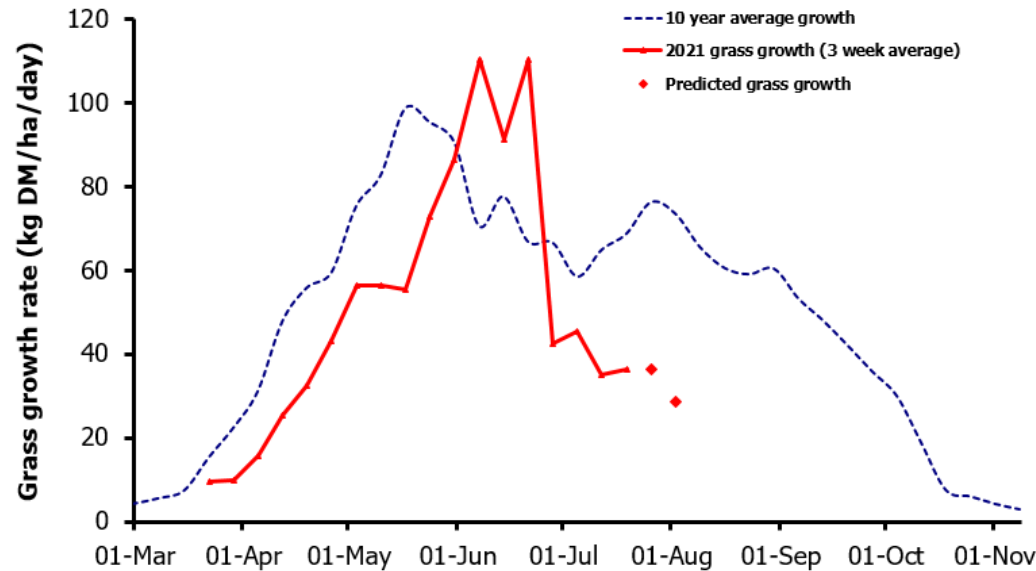


Week Beginning 19th July 2021



MANAGEMENT NOTES:

- Variation across the province is increasing, in terms of grass growth, grass quality and soil moisture. Grass growth this week ranged from 97.4 kg DM/ ha/day on a Co. Fermanagh farm to 0 on two farms in Co. Down.
- The exceptionally dry and warm conditions are to continue for at least a further week and are the cause for the continued low growth prediction.
- For farms struggling with low moisture and growth, continue to match growth with demand and hold av. farm cover above 2100 kg DM/ha.
- Where growth is outstripping demand, reduce the additional supplement quickly to avoid a surplus build up. Use this opportunity to correct paddocks with poor grass quality ahead of building covers in August.

	Value of Grass	Grass Quality	
Dairy – maintenance plus (M+) (kg/cow/day)*	17.8	DM (%)	20.0
Growing animals – daily live weight gain (kg/head/day)**	0.99	CP (% DM)	17.4
*M+ calculated assuming: 650kg cow, and 15 kg DMI. Maintenance=75 MJ/day, 5.3 MJ/kg milk **Beef daily gain assuming: 300 kg beef steer, and 6.6 kg DMI. Maintenance=35 MJ/day, 40 MJ/kg gain		WSC (% DM)	13.2
		ME (MJ/kg DM)	11.3