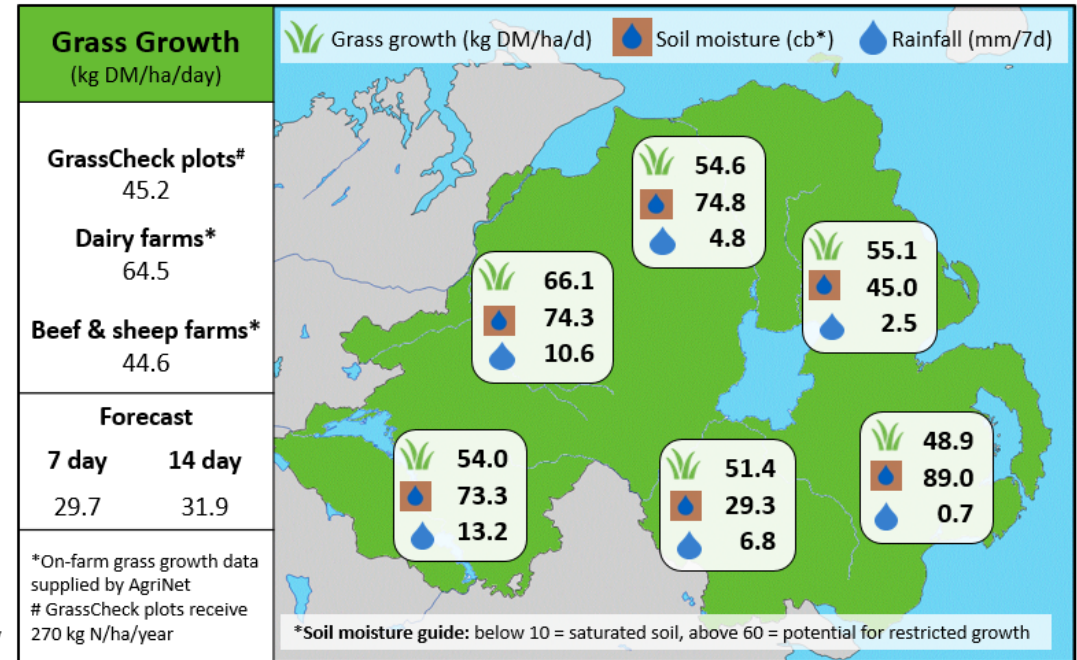
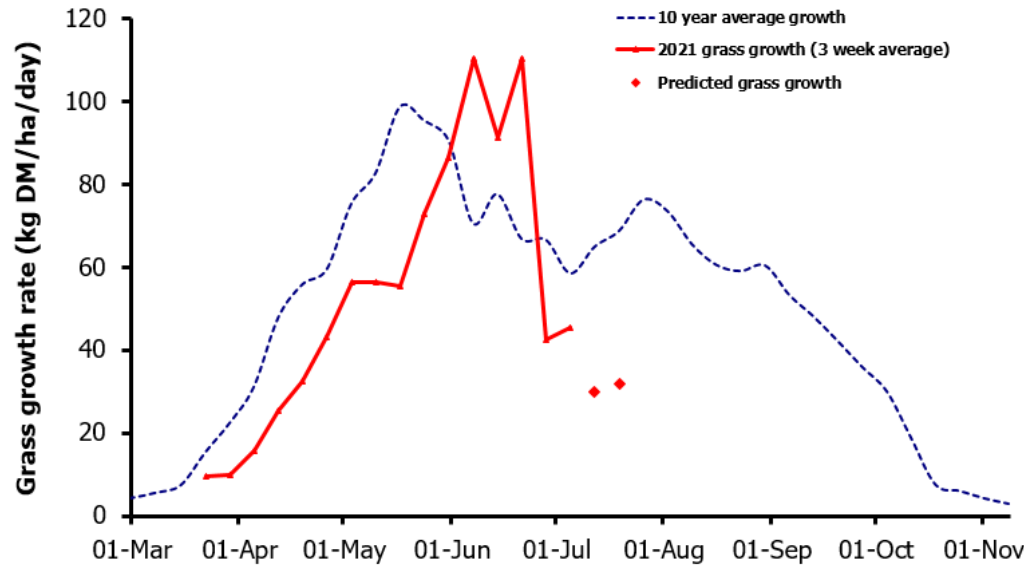


Week Beginning 5th July 2021



MANAGEMENT NOTES:

- This week's av. grass growth figures are much higher than were predicted, however a large divide is emerging across the province, ranging from 16.4 to 78.6 kg DM/ha on a Co. Down and a Co. Tyrone farm respectively.
- The range in grass growth and the low grass growth forecasts are mainly due to soil moisture deficits, with a large range in rainfall also seen across the province, with many farmers in the East receiving little or no rain.
- Average total yield this year (until June 30th) is 84.2% of the long term av.
- Irrespective of grass growth on farm, continue to measure regularly and know your grazing demand, so that you can make the correct decisions quickly. If demand continues to outstrip growth, continue to hold a longer grazing rotation to avoid av. farm cover falling below 2100 Kg DM/ha.

Value of Grass		Grass Quality	
Dairy – maintenance plus (M+) (kg/cow/day)*	17.5	DM (%)	20.1
Growing animals – daily live weight gain (kg/head/day)**	0.97	CP (% DM)	15.3
*M+ calculated assuming: 650kg cow, and 15 kg DMI. Maintenance=75 MJ/day, 5.3 MJ/kg milk **Beef daily gain assuming: 300 kg beef steer, and 6.6 kg DMI. Maintenance=35 MJ/day, 40 MJ/kg gain		WSC (% DM)	15.2
		ME (MJ/kg DM)	11.2