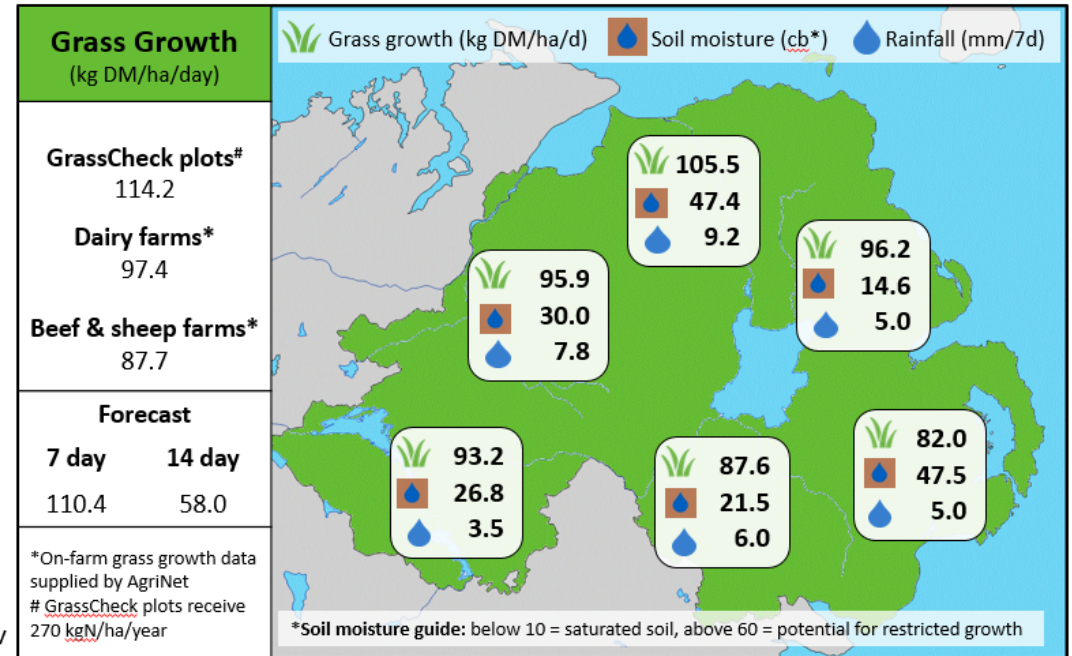
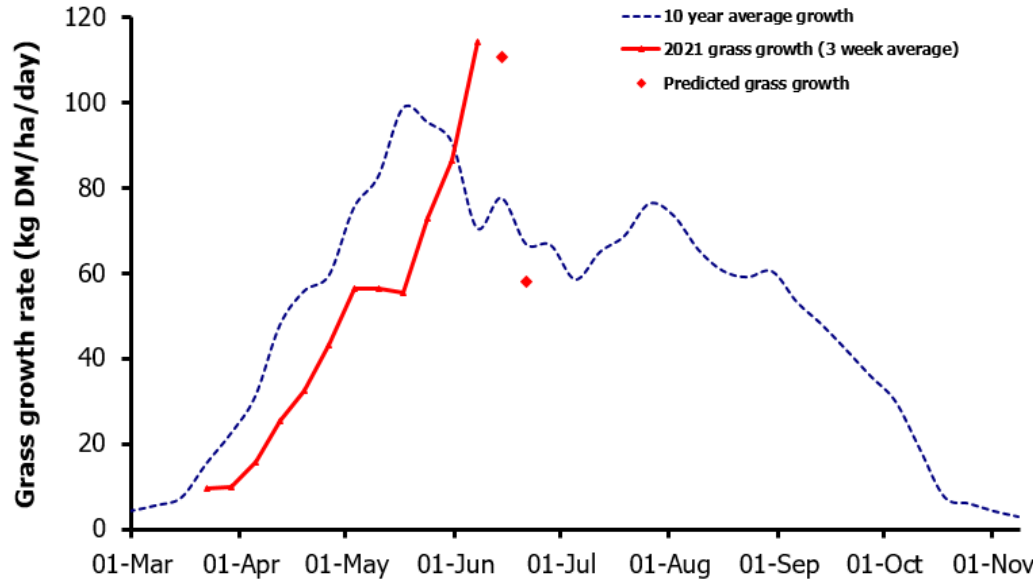


## Week Beginning 7<sup>th</sup> June 2021



### MANAGEMENT NOTES:

- Favourable weather conditions over the past week have continued to support high rates of grass growth. However, current 7 and 14-day forecasts predict declining growth rates, mainly due to the possibility of soil moisture deficit and also the impact of heading.
- Continue to measure the grazing platform regularly to manage grass allocations as we approach the mid-point in the season. Consider pre-mowing to maintain grass quality in the next rotation and remove surplus grass from the wedge at the first opportunity.
- Where growth rates are high, reducing the rotation length (16-21 days at present) can help to manage grass covers and avoids putting stock into excessive covers (above 3300 kg DM/ha).

Value of Grass		Grass Quality	
Dairy – maintenance plus (M+) (kg/cow/day)*	18.7	DM (%)	18.5
Growing animals – daily live weight gain (kg/head/day)**	1.04	CP (% DM)	14.3
*M+ calculated assuming: 650kg cow, and 15 kg DMI. Maintenance=75 MJ/day, 5.3 MJ/kg milk **Beef daily gain assuming: 300 kg beef steer, and 6.6 kg DMI. Maintenance=35 MJ/day, 40 MJ/kg gain		WSC (% DM)	16.1
		ME (MJ/kg DM)	11.6