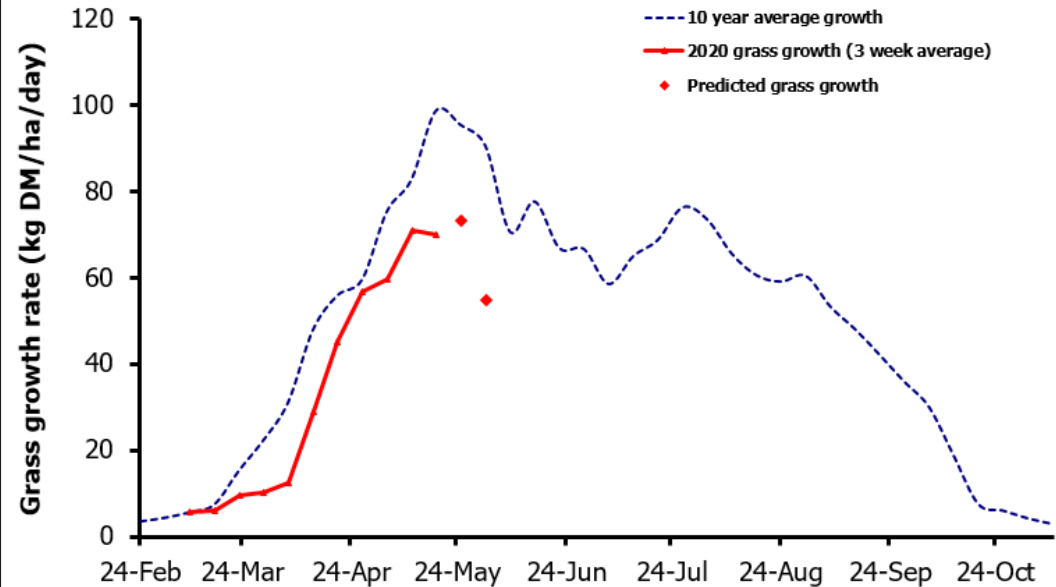
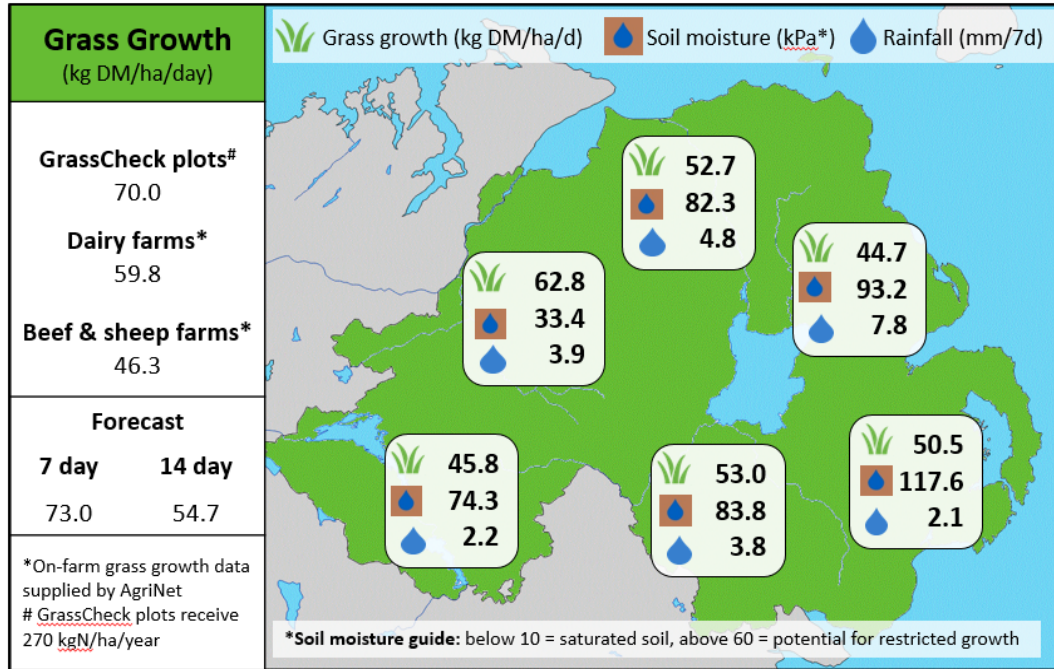


Week Beginning 18th May 2020



MANAGEMENT NOTES:

- With grass growth rates expected to peak this week as swards reach heading, the impact of the dry weather can be seen in both the plot and farm growth rates, currently >28.5 kg below the 98.5 kg DM/ha/d long-term average.
- First-cut silage is now complete or well-underway on many farms, and this re-growth may provide some welcome extra grazing ground on farms where it is needed. As temperatures are set to rise again this week, consider trailing shoe or dribble bar application for post first cut slurry to maximise nitrogen return.
- With grass ME averaging 11.8 MJ/kg DM this week, grazing should continue to support high levels of animal performance, with M+ 21.5 and ADG of 1.07 kg.

Value of Grass		Grass Quality	
Dairy – maintenance plus (M+) (kg/cow/day)*	21.5	DM (%)	22.8
Growing animals – daily live weight gain (kg/head/day)**	1.07	ME (MJ/kg DM)	11.8
*M+ calculated assuming: 650kg cow, Maintenance=75 MJ/day, 5.3 MJ/kg and 16 kg DMI **Beef daily gain assuming: 300 kg beef steer, Maintenance=35 MJ/day, 40 MJ/kg gain, and 6.6 kg DMI		CP (% DM)	17.6
		WSC (% DM)	17.8