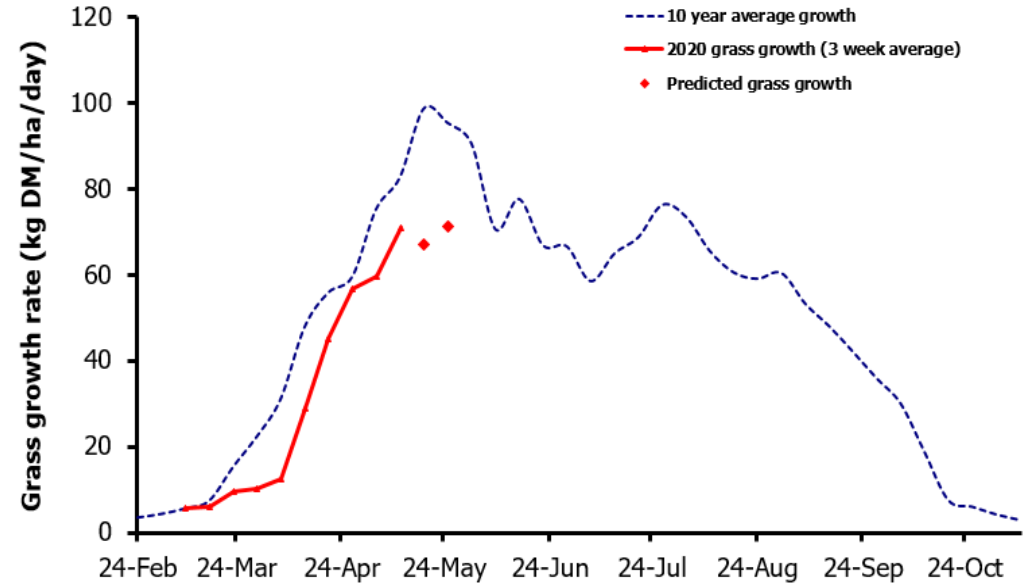
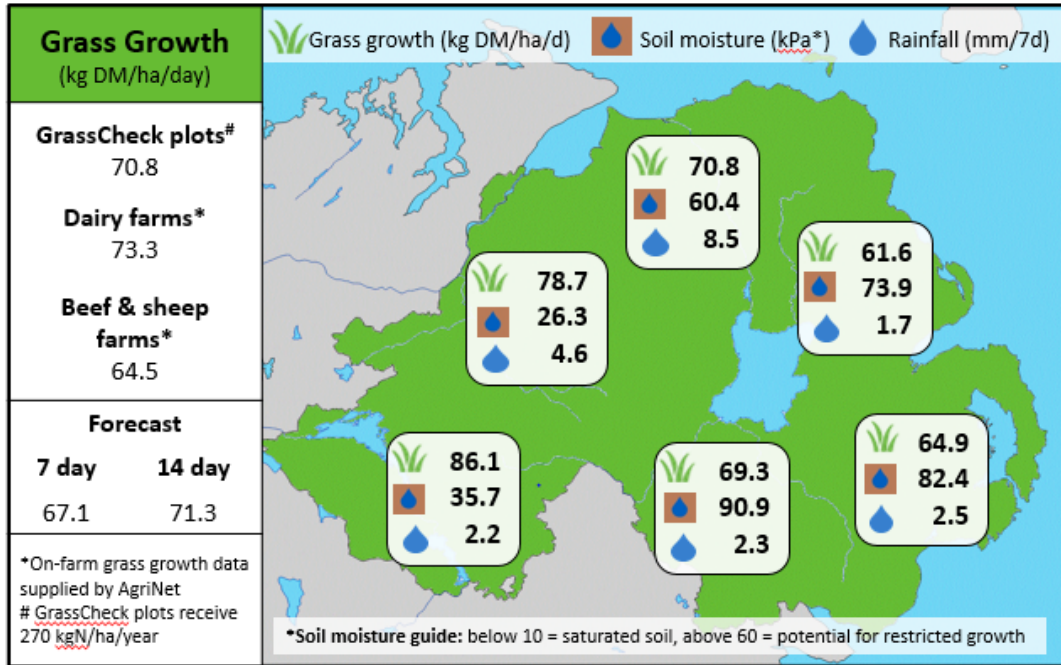


## Week Beginning 11<sup>th</sup> May 2020



### MANAGEMENT NOTES:

- Most areas have received some rain over this past week which has enabled grass growth rates to remain relatively constant. Although growth rates are still well below average for this time of year, plot data has shown the impact of the dry weather has not been as severe as was initially predicted.
- With grass quality measurements resuming, results are very promising with ME exceeding 12MJ/kg DM and high DM content supporting excellent grass intakes across all livestock. This quality will support Maintenance-plus levels of 22.7kg/cow/day for dairy cows and liveweight gains of 1.14kg/head/day for growing stock. Attention to residuals will be important to maintain this level of performance in the next rotation.

Value of Grass		Grass Quality	
Dairy – maintenance plus (M+) (kg/cow/day)*	22.7	DM (%)	22.4
Growing animals – daily live weight gain (kg/head/day)**	1.14	ME (MJ/kg DM)	12.2
*M+ calculated assuming: 650kg cow, Maintenance=75 MJ/day, 5.3 MJ/L and 16 kg DMI **Beef daily gain assuming: 300 kg beef steer, Maintenance=35 MJ/day, 40 MJ/kg gain, and 6.6 kg DMI		CP (% DM)	16.2
		WSC (% DM)	19.5