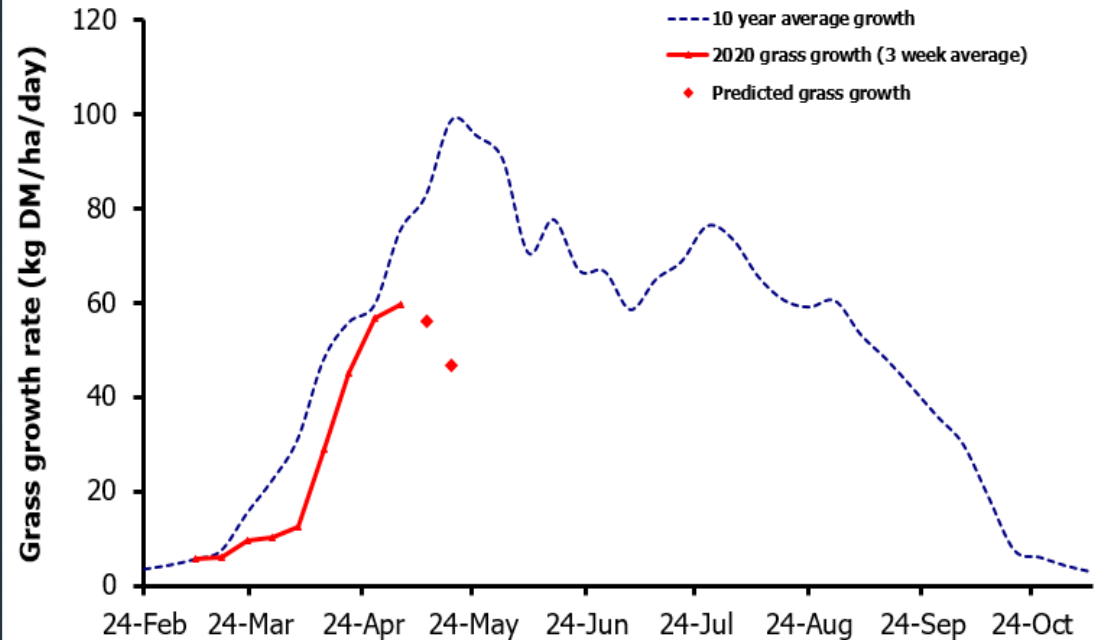
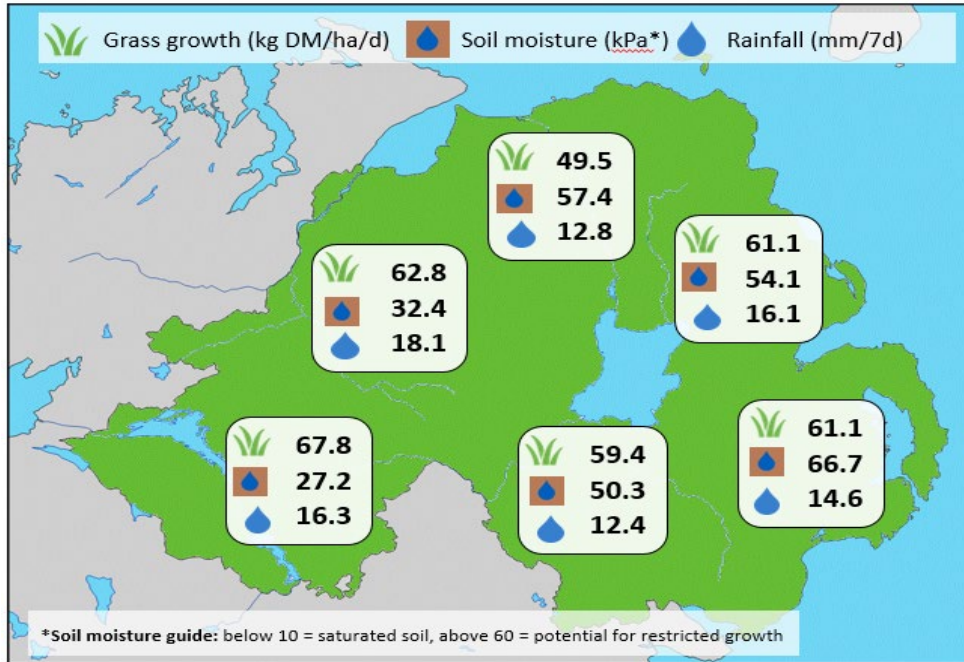


Week Beginning 4th May 2020



Weekly Grass Growth (kg DM/ha/day)		
GrassCheck plots#	59.6	
Dairy farms*	63.1	
Beef & sheep farms*	55.5	
Forecast	7 day	56.2
	14 day	46.7

Grass Quality	
DM (%)	22.3
ME (MJ/kg DM)	12.2
CP (% DM)	17.0
WSC (% DM)	19.9

MANAGEMENT NOTES:

- Recent rainfall boosted plot yields this week, with the 3-week average growth rate above what had been expected. Growth is forecast to decline due to the impact of cold temperatures and minimal rainfall for Hillsborough in the next fortnight, but this trend should not be seen where conditions are more favourable.
- Growth during March and April was restricted by poor spring weather, with plot yields to-date just 1.22 t DM/ha, over 500 kg DM lower than the long-term average.
- After slow April growth and a prolonged dry spell prior to last weeks rain, be mindful of any potential excess nitrate present in swards when planning first-cut silage. High nitrates at cutting cause poor fermentation, and lower silage quality and palatability.

*On-farm grass growth data supplied by AgriNet

GrassCheck plots receive 270 kgN/ha/year

