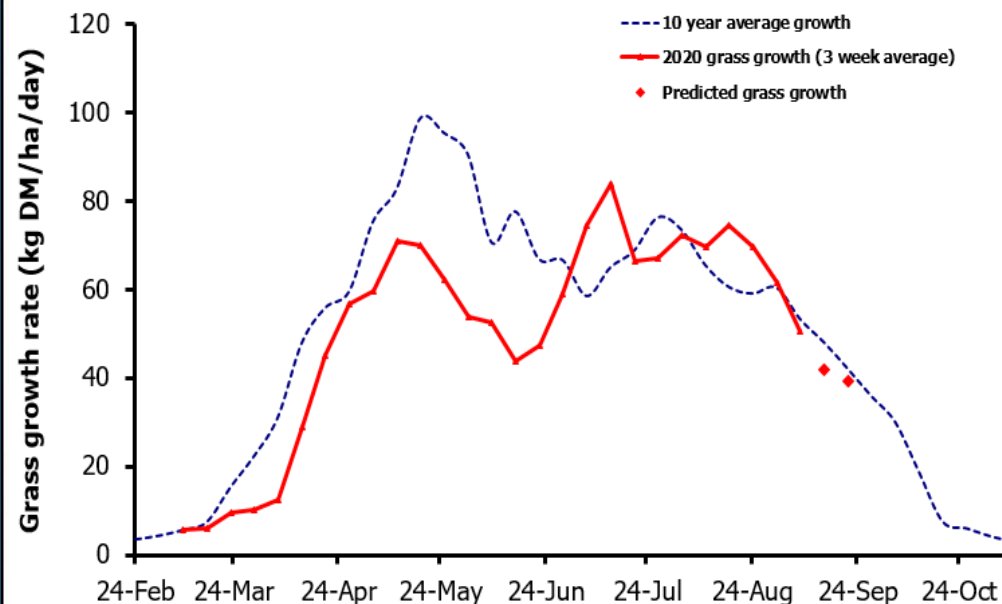
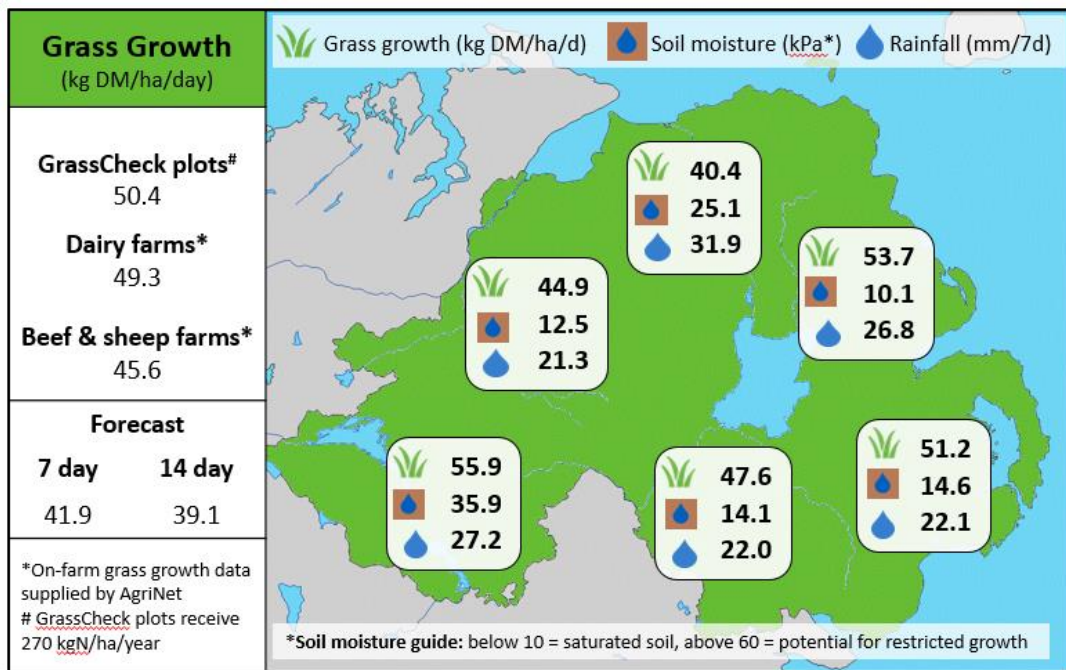


## Week Beginning 7<sup>th</sup> September 2020



### MANAGEMENT NOTES:

- Grass DM values have improved by 3.8% this week to an average of 15.3%, and ME is again averaging >11 MJ/kg DM after a drier and sunnier week.
- However, the recent wet and cooler weather has impacted on the 3-week average growth rates recorded on the GrassCheck plots, which was down to 50.4 kg DM/ha/d this week. Average growth rates recorded on GrassCheck farms were slightly lower at 49.0 kg, comparable to the LT average of 53.1 kg.
- With the deadline for N spreading rapidly approaching, take advantage of better weather in the next week to spread any final fertiliser applications for the year, to boost autumn growth and help to build covers ahead of winter.

Value of Grass		Grass Quality	
Dairy – maintenance plus (M+) (kg/cow/day)*	11.2	DM (%)	15.3
Growing animals – daily live weight gain (kg/head/day)**	0.97	ME (MJ/kg DM)	11.2
*M+ calculated assuming: 650kg cow, Maintenance=75 MJ/day, 5.3 MJ/kg and 12.0 kg DMI		CP (% DM)	17.6
**Beef daily gain assuming: 300 kg beef steer, Maintenance=35 MJ/day, 40 MJ/kg gain, and 6.6 kg DMI		WSC (% DM)	11.4