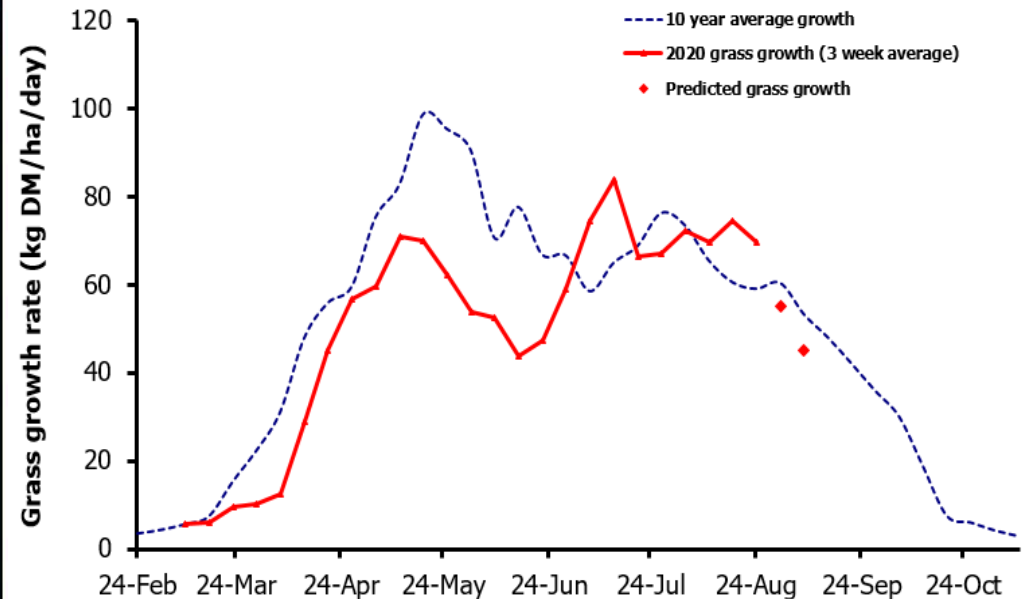
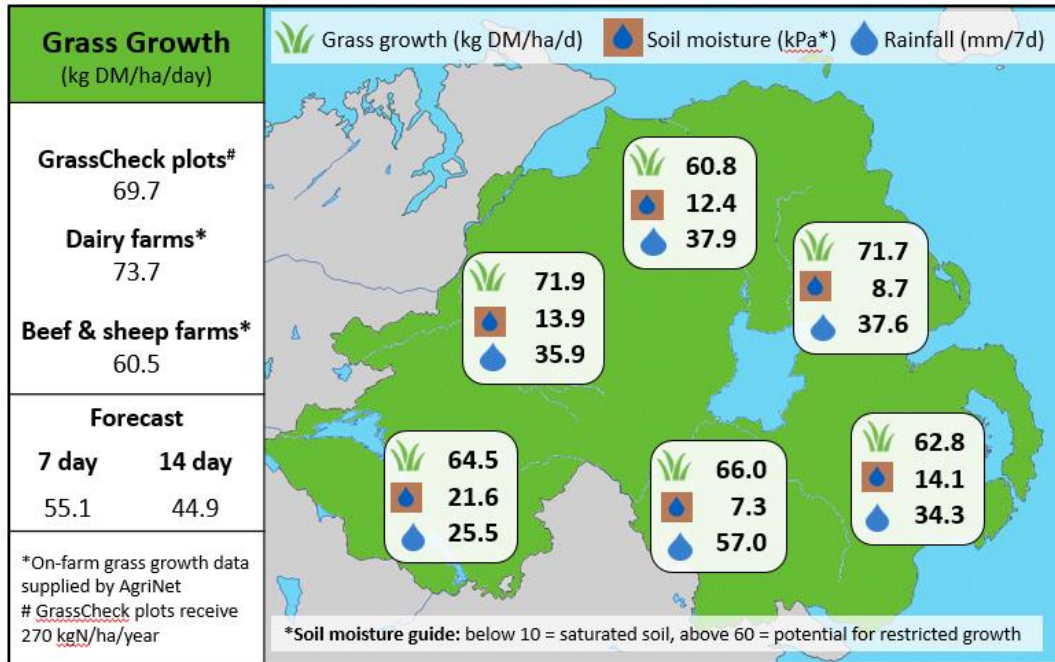


## Week Beginning 24<sup>th</sup> August 2020



### MANAGEMENT NOTES:

- On-Farm grass growth rates have remained similar to last week, averaging 66.3 kg DM/ha/d, slightly above the LT average of 58.9 kg for late August, with plot growth rates averaging 69.7 kg. The extremely wet and much cooler weather forecast is driving down growth predictions for the next 2 weeks.
- Grass DM values have fallen this week following the much higher rainfall recorded last week, with more rain arriving with Storm Francis. Grazing conditions are likely to deteriorate, and intakes may fall in the short-term.
- Adapt your rotation to avoid the wettest paddocks to help prevent poaching, or consider part-time housing where soils are saturated.

Value of Grass		Grass Quality	
Dairy – maintenance plus (M+) (kg/cow/day)*	14.4	DM (%)	13.7
Growing animals – daily live weight gain (kg/head/day)**	0.97	ME (MJ/kg DM)	11.2
*M+ calculated assuming: 650kg cow, Maintenance=75 MJ/day, 5.3 MJ/kg and 13.5 kg DMI		CP (% DM)	18.6
**Beef daily gain assuming: 300 kg beef steer, Maintenance=35 MJ/day, 40 MJ/kg gain, and 6.6 kg DMI		WSC (% DM)	9.9