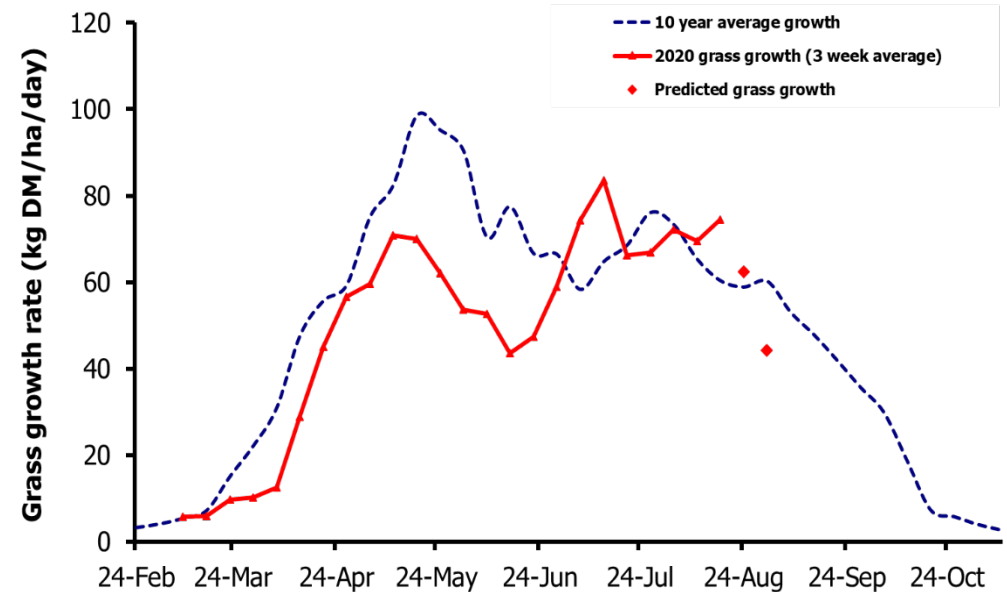
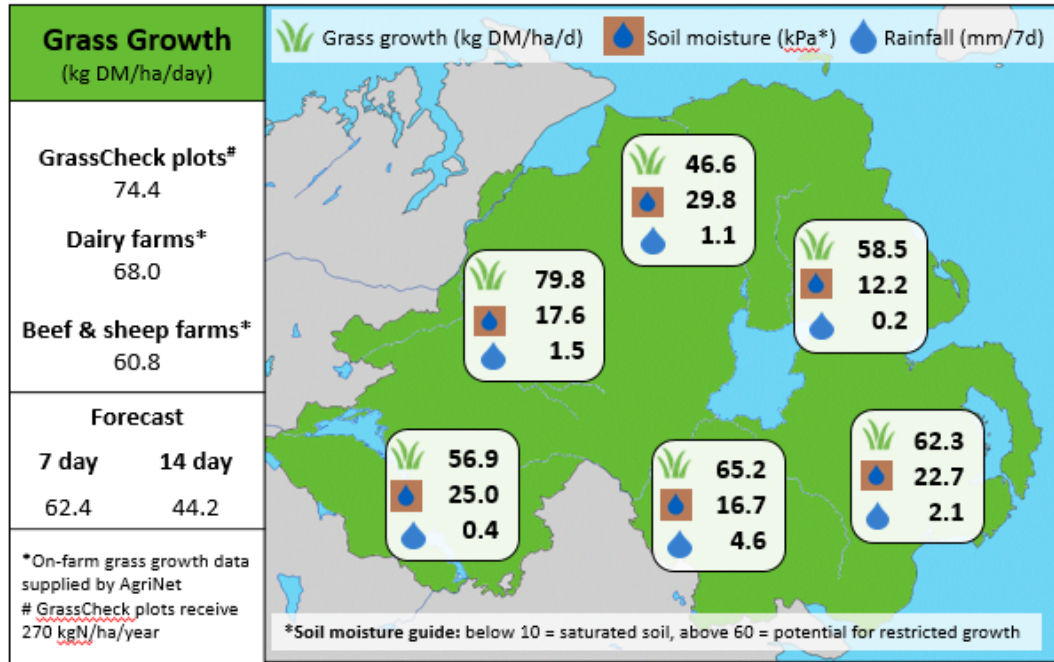


Week Beginning 17th August 2020



MANAGEMENT NOTES:

- A mainly dry week has seen soil conditions improve markedly across the Province and the warm temperatures have fuelled strong growth both on farm and on the GrassCheck plots. Growth rates are expected to remain slightly above average but a significant drop in temperatures is expected next week, pushing growth rates below average for this time of year.
- Grass quality remains slightly below average for this time of year and with wet weather forecast low DM contents are likely to remain, potentially reducing intakes and performance from grass below expected. Monitor grass intakes and any supplementation carefully to meet animal demand.

Value of Grass		Grass Quality	
Dairy – maintenance plus (M+) (kg/cow/day)*	14.6	DM (%)	14.7
Growing animals – daily live weight gain (kg/head/day)**	0.99	ME (MJ/kg DM)	11.3
*M+ calculated assuming: 650kg cow, Maintenance=75 MJ/day, 5.3 MJ/kg and 13.5 kg DMI		CP (% DM)	17.9
**Beef daily gain assuming: 300 kg beef steer, Maintenance=35 MJ/day, 40 MJ/kg gain, and 6.6 kg DMI		WSC (% DM)	10.7