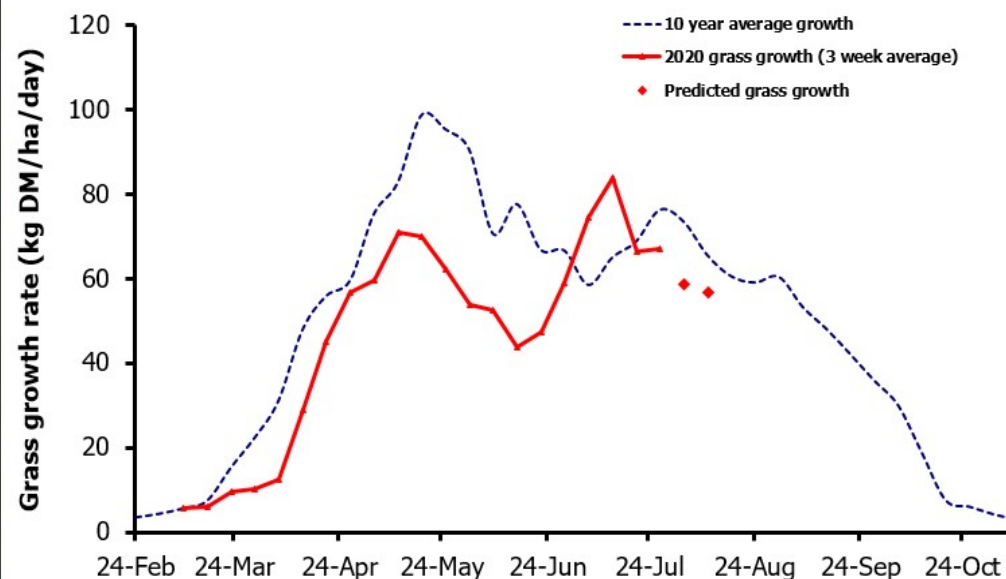
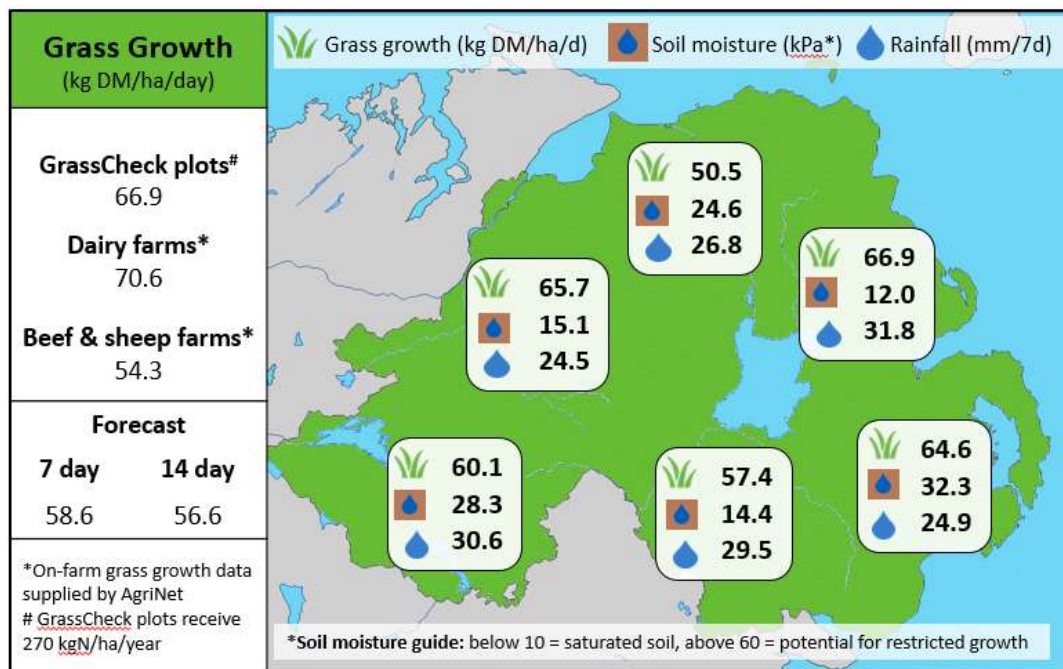


Week Beginning 27th July 2020



MANAGEMENT NOTES:

- Grass growth is currently behind the long-term average of 76.1 kg DM/ha/d for late July, at 60.2 kg this week on GrassCheck farms and 66.9 kg on the GrassCheck plots. The GrassCheck graph suggests the summer peak in grass growth was two weeks earlier than normal – likely due to compensatory growth after May and June’s dry weather, hence the current growth figures falling behind the long-term average despite fair growing conditions.
- Looking to August, assess your individual paddock performance data over the past few seasons, and current sward composition, to identify priority areas for reseeding. It is cost-effective to reseed swards with <60% PRG content.

Value of Grass		Grass Quality	
Dairy – maintenance plus (M+) (kg/cow/day)*	17.3	DM (%)	16.9
Growing animals – daily live weight gain (kg/head/day)**	1.02	ME (MJ/kg DM)	11.5
*M+ calculated assuming: 650kg cow, Maintenance=75 MJ/day, 5.3 MJ/kg and 14.5 kg DMI		CP (% DM)	18.6
**Beef daily gain assuming: 300 kg beef steer, Maintenance=35 MJ/day, 40 MJ/kg gain, and 6.6 kg DMI		WSC (% DM)	13.0