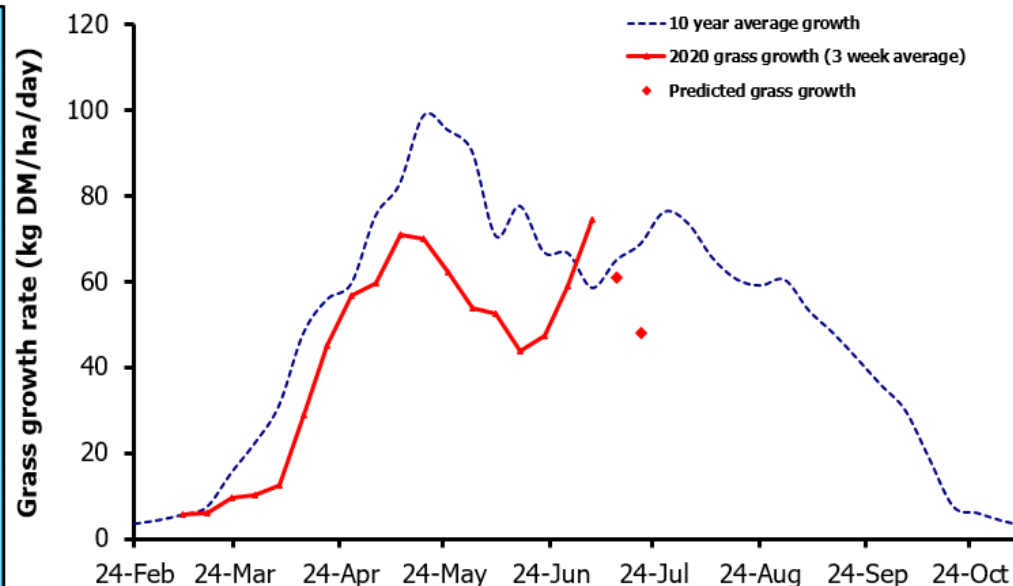
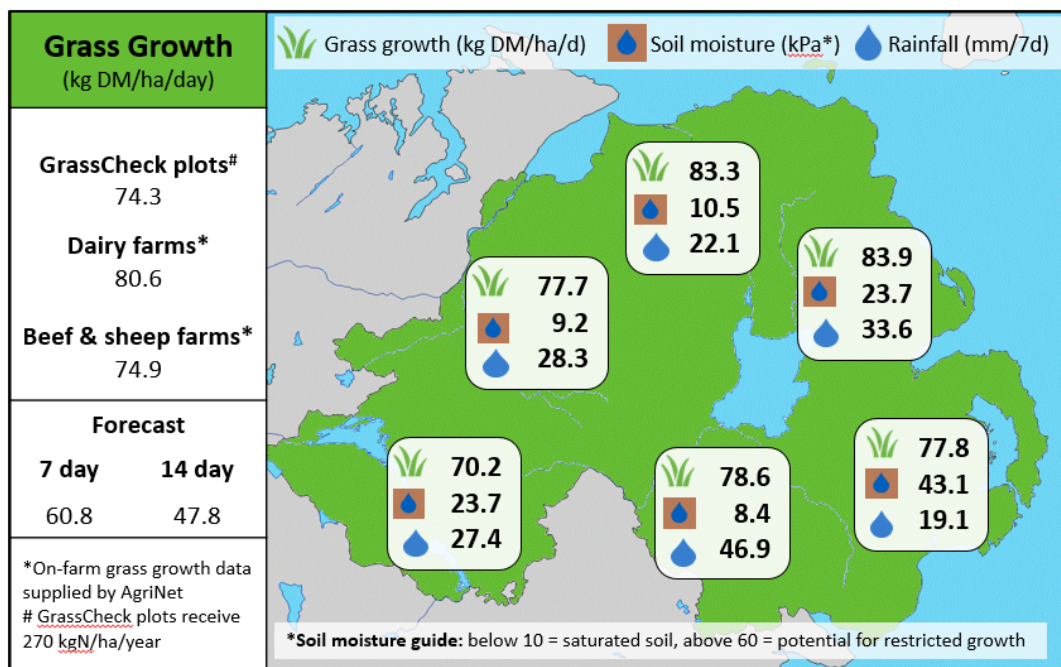


Week Beginning 6th July 2020



MANAGEMENT NOTES:

- Cool temperatures combined with high cloud cover are driving down grass growth predictions for the next 14 days. Growth on GrassCheck plots at Hillsborough was 65.1 kg DM/ha/d this week, but excellent growth of 83.5 kg at Greenmount has boosted this week's average plot growth rate figure.
- Overall, growth is well above the typical 58.3 kg DM/ha/d for the start of July.
- However, DM yields from March-June from the GrassCheck plots show grass production was 1.9 t DM/ha below the 10-year average of 6.8 t. The average DM yield from all GrassCheck farms is 1.2 t DM/ha behind this figure, with county averages ranging from -0.75 t in Tyrone/Fermanagh to -1.6 t in Down.

Value of Grass		Grass Quality	
Dairy – maintenance plus (M+) (kg/cow/day)*	16.5	DM (%)	15.1
Growing animals – daily live weight gain (kg/head/day)**	0.97	ME (MJ/kg DM)	11.2
*M+ calculated assuming: 650kg cow, Maintenance=75 MJ/day, 5.3 MJ/kg and 14.5 kg DMI		CP (% DM)	19.0
**Beef daily gain assuming: 300 kg beef steer, Maintenance=35 MJ/day, 40 MJ/kg gain, and 6.6 kg DMI		WSC (% DM)	9.8