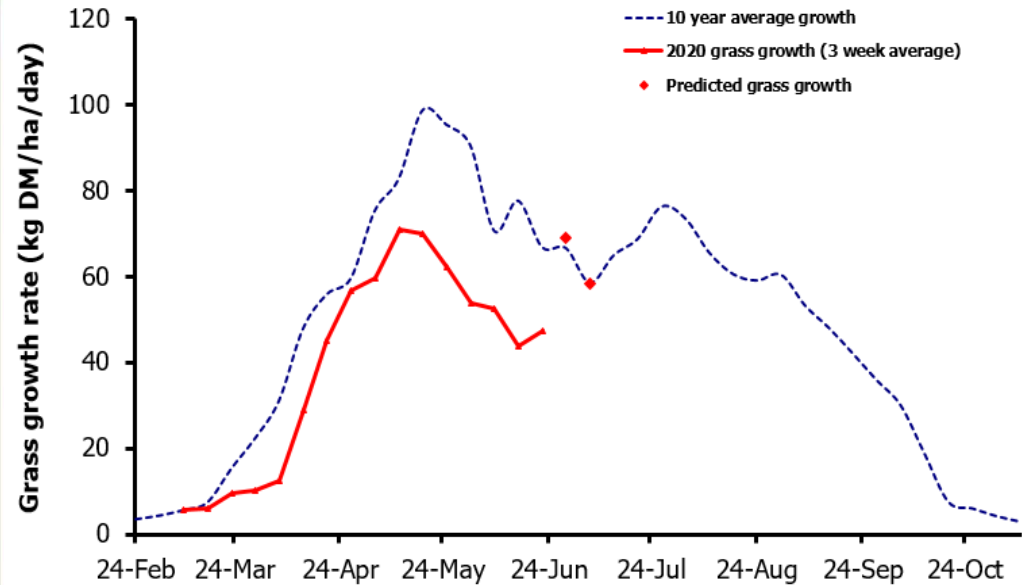
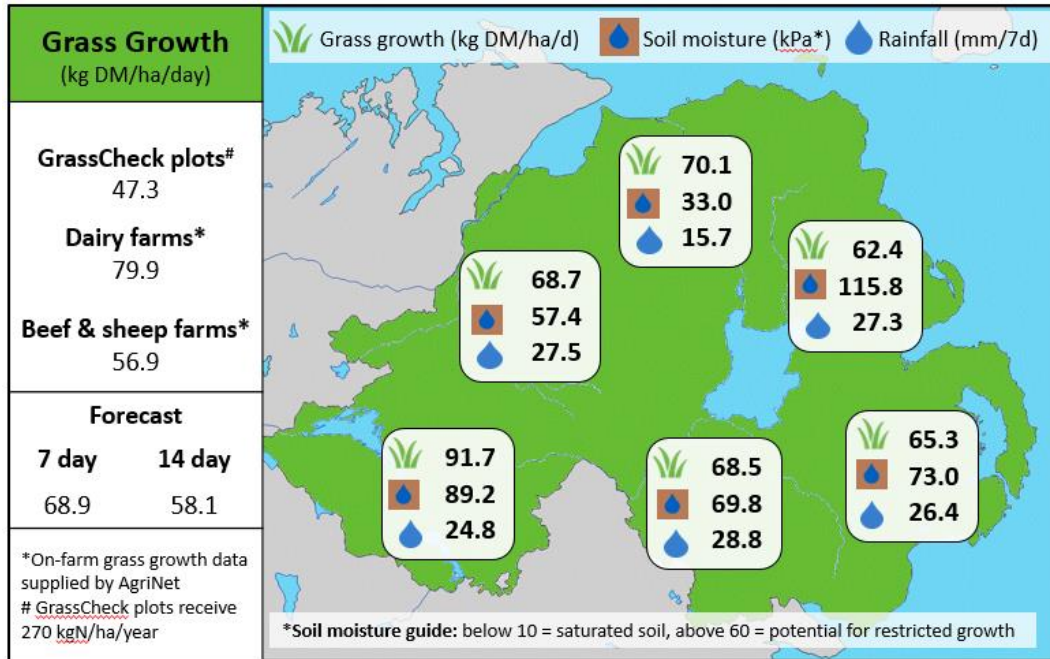


Week Beginning 22nd June 2020



MANAGEMENT NOTES:

- Plentiful rainfall has boosted grass growth figures and GrassCheck farms are now averaging 71.1 kg DM/ha/d, +20 kg from last week.
- Hillsborough saw 26 mm more rain than was forecast last week! As a result, higher plot growth rates are predicted: 68.9 & 58.1 kg in the next 7 & 14 days.
- Grass quality analysis shows lower DM and ME values this week. DMI should still be achievable with grass DM% of 17.8, but with lower ME at 11.2 MJ/kg DM, animal performance from grass could fall slightly. Monitoring grass quality and animal performance regularly is essential to identify and address any underperformance from stock, linked to grass quality or any other factors

| Value of Grass | | Grass Quality | |
|--|------|---------------|------|
| Dairy – maintenance plus (M+) (kg/cow/day)* | 17.5 | DM (%) | 17.8 |
| Growing animals – daily live weight gain (kg/head/day)** | 0.97 | ME (MJ/kg DM) | 11.2 |
| *M+ calculated assuming: 650kg cow, Maintenance=75 MJ/day, 5.3 MJ/kg and 15 kg DMI **Beef daily gain assuming: 300 kg beef steer, Maintenance=35 MJ/day, 40 MJ/kg gain, and 6.6 kg DMI | | CP (% DM) | 19.3 |
| | | WSC (% DM) | 11.3 |