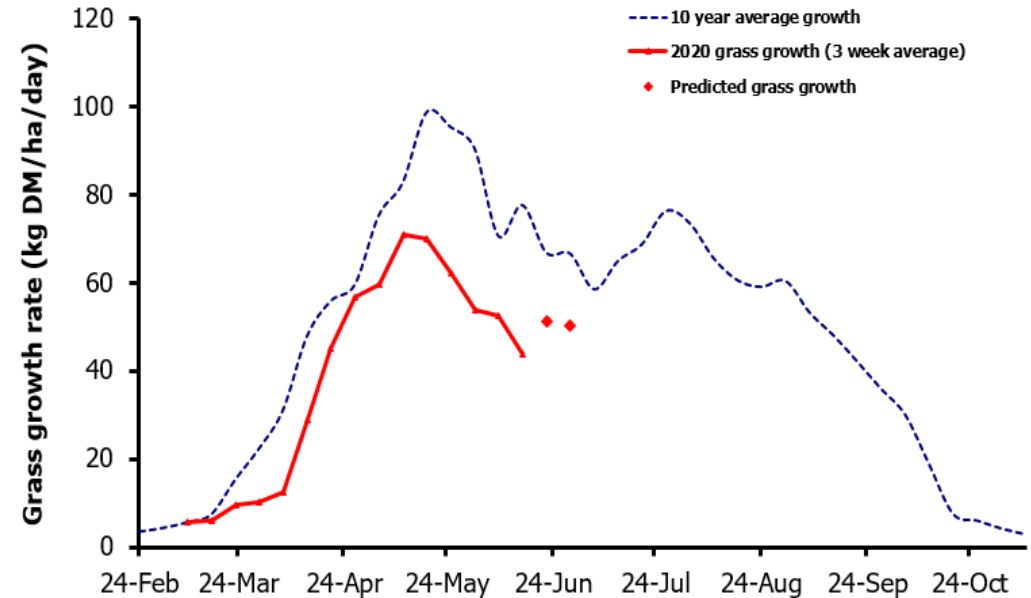
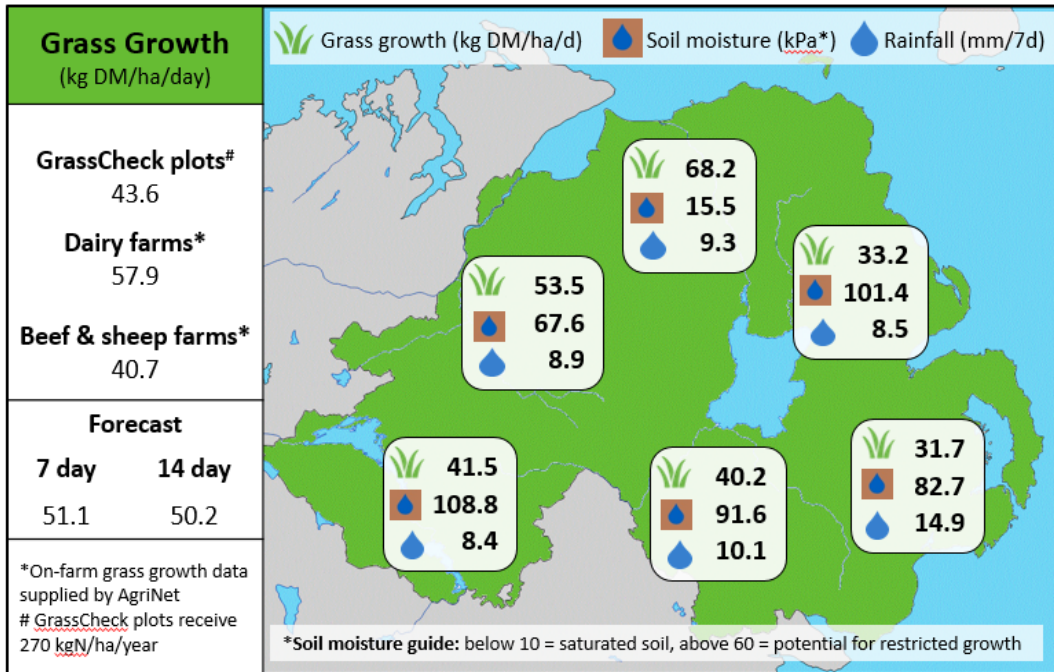


## Week Beginning 15<sup>th</sup> June 2020



### MANAGEMENT NOTES:

- We have seen growth rates fall again this week, with the GrassCheck plots dropping 9 kg MD/ha/d to an average of 43.6 kg. This fall is not as significant as predicted, due to higher growth rates on the plots at Greenmount (54 kg) compared to Hillsborough (33 kg), and higher rainfall than was forecast.
- Overall grass quality has improved, with ME averaging 12.0 MJ/kg DM. However, grass samples were very variable this week, ranging from 11.2-12.4 ME. Be mindful of the impacts of the drought and seed heading on sward composition - stemmy swards will be less digestible (with lower ME values) but grazing out cleanly now will reset quality for the next rotation.

Value of Grass		Grass Quality	
Dairy – maintenance plus (M+) (kg/cow/day)*	19.8	DM (%)	22.7
Growing animals – daily live weight gain (kg/head/day)**	1.11	ME (MJ/kg DM)	12.0
*M+ calculated assuming: 650kg cow, Maintenance=75 MJ/day, 5.3 MJ/kg and 15 kg DMI **Beef daily gain assuming: 300 kg beef steer, Maintenance=35 MJ/day, 40 MJ/kg gain, and 6.6 kg DMI		CP (% DM)	19.6
		WSC (% DM)	15.2