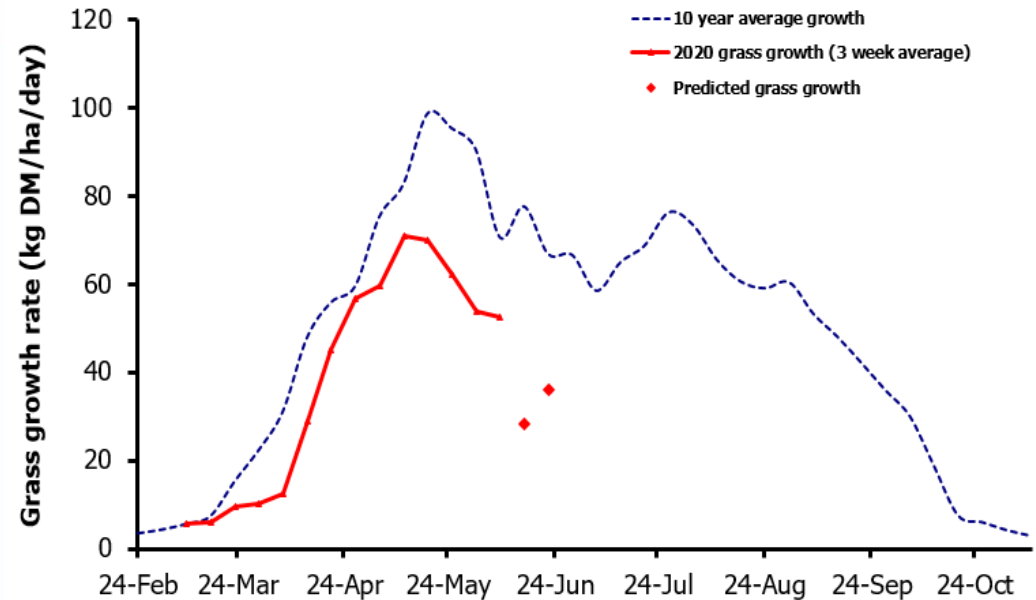
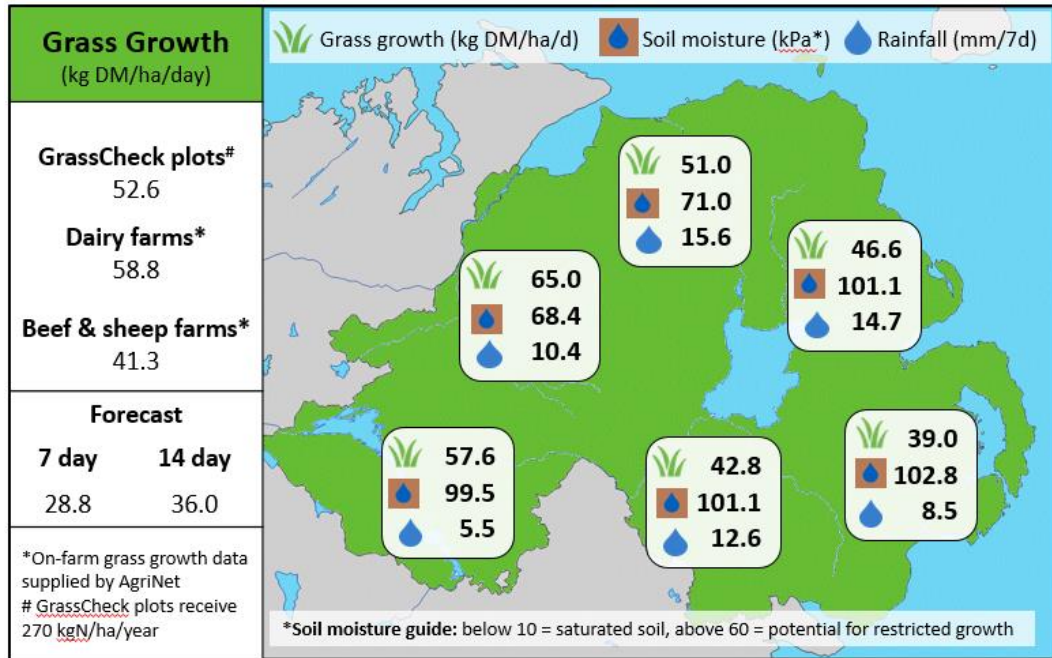


Week Beginning 8th June 2020



MANAGEMENT NOTES:

- Grass growth remains below average this week, as the impact of May's drought continues to take a toll on pastures across the province. This is seen most significantly in the eastern counties, where on-farm growth rates are averaging 42.8 kg DM/ha, just 61% of the typical 70.4 kg for early June.
- The 14 day prediction shows that growth rates may begin recovering, as soil moisture stores are slowly replenished by the rain.
- Over the coming days and weeks there should be better opportunities to spread fertiliser ahead of rain. Do walk your paddocks to assess the ground first, and consider delaying applications where soils are still very dry.

Value of Grass	
Dairy – maintenance plus (M+) (kg/cow/day)*	19.2
Growing animals – daily live weight gain (kg/head/day)**	1.07

*M+ calculated assuming: 650kg cow, Maintenance=75 MJ/day, 5.3 MJ/kg and 15 kg DMI **Beef daily gain assuming: 300 kg beef steer, Maintenance=35 MJ/day, 40 MJ/kg gain, and 6.6 kg DMI

Grass Quality	
DM (%)	22.8
ME (MJ/kg DM)	11.8
CP (% DM)	15.5
WSC (% DM)	18.0