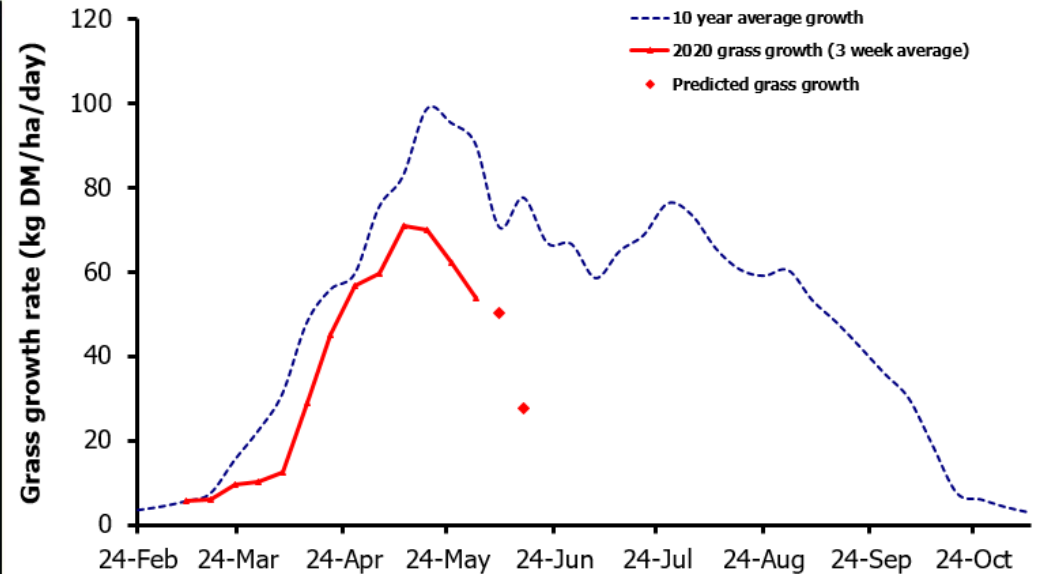
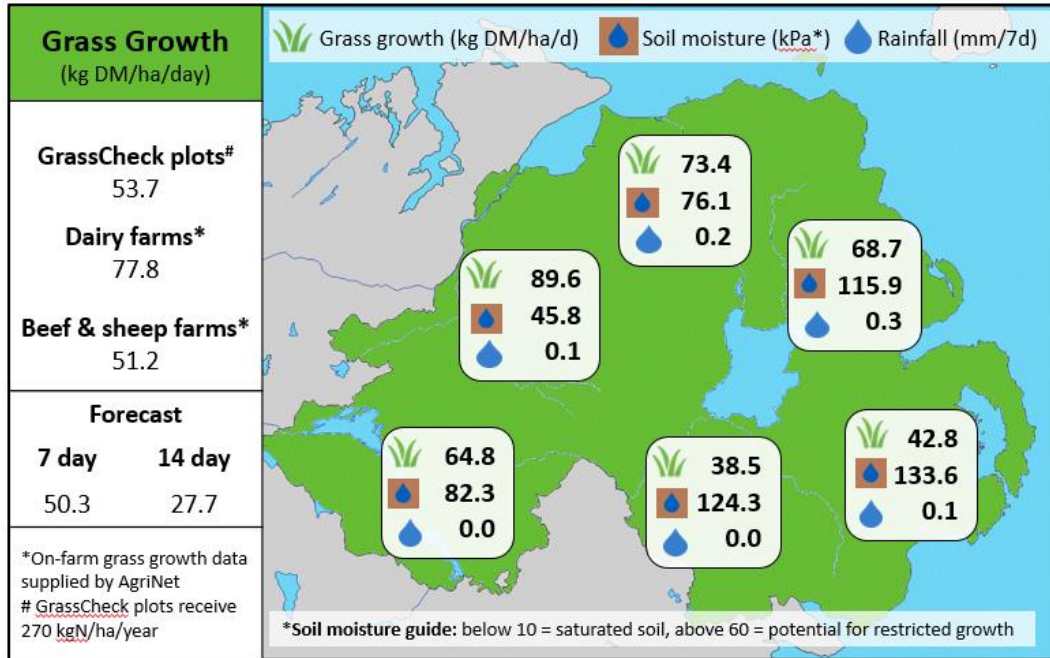


Week Beginning 1st June 2020



MANAGEMENT NOTES:

- Average grass growth has risen by 3.7 kg DM/ha/d on GrassCheck Dairy farms this week, driven by better conditions and higher average grass covers on farms in the west. Growth rates on the GrassCheck plots and Beef & Sheep farms have declined by approx. 10 kg DM/ha/d over the past week.
- The grass growth prediction is showing a strong decline over the next 14 days, due to lack of soil moisture & low rainfall predicted in the current forecast.
- Grass DM yields to-date from the GrassCheck plots are 1.4 t DM/ha below the long-term March-May average, with just 72% of typical growth so far this year. The picture is similar, and yields well below average, across the province.

Value of Grass	
Dairy – maintenance plus (M+) (kg/cow/day)*	19.2
Growing animals – daily live weight gain (kg/head/day)**	1.07

*M+ calculated assuming: 650kg cow, Maintenance=75 MJ/day, 5.3 MJ/kg and 15 kg DMI **Beef daily gain assuming: 300 kg beef steer, Maintenance=35 MJ/day, 40 MJ/kg gain, and 6.6 kg DMI

Grass Quality	
DM (%)	21.1
ME (MJ/kg DM)	11.8
CP (% DM)	17.6
WSC (% DM)	15.8