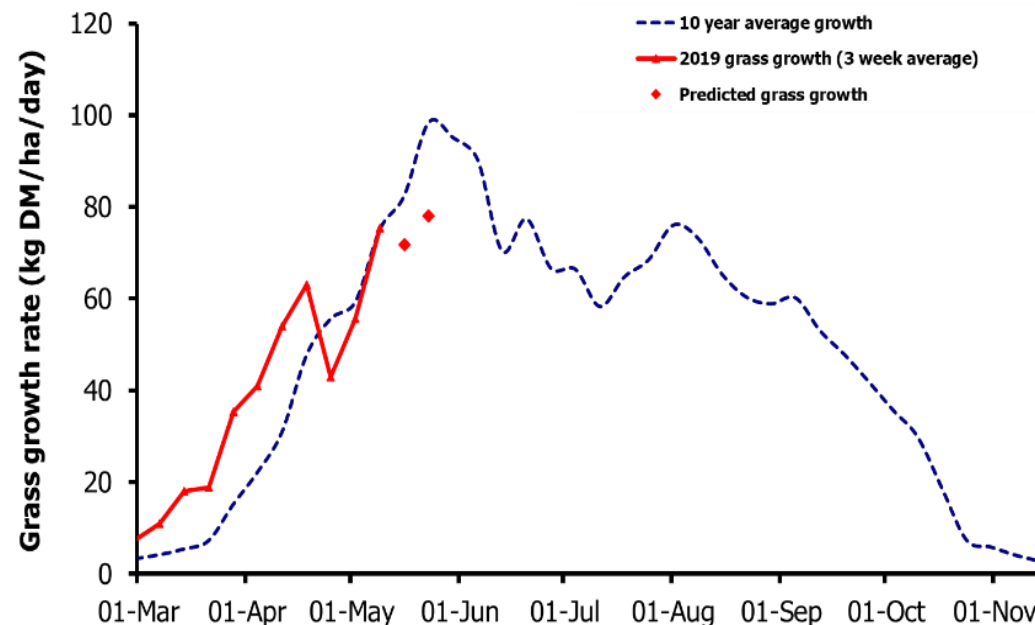
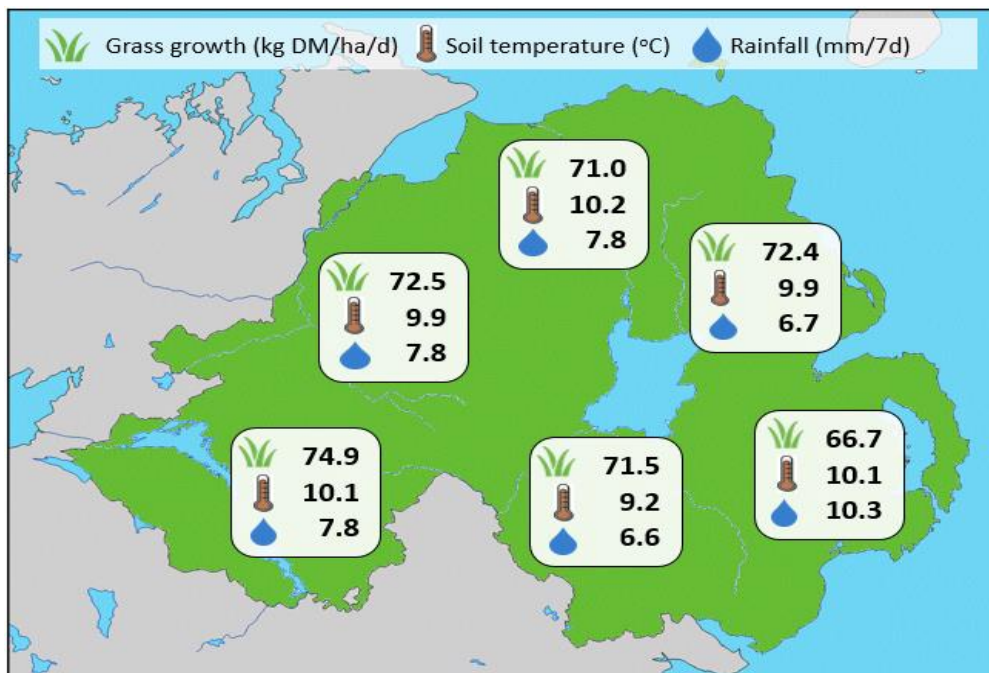


## Week Beginning 6 May 2019



### MANAGEMENT NOTES:

- Total production from GrassCheck plots to-date in 2019 has been 1.7 t DM/ha. These figures are 21% above the long-term average for the end of April, boosted by milder early spring weather than normal.
- This week has seen good grass growth rates, as expected. However, low rainfall and dry soil moisture readings on some farms are beginning to impact on growth predictions and below average growth is currently predicted in the next 14 days.
- Many farms have already taken advantage of recent warm and dry weather to bring in first-cut silage. Plan after-cut fertiliser applications carefully to maximise re-growth, remembering to leave a 7 day window between slurry application and fertilising to maximise N uptake.

Weekly Grass Growth (kg DM/ha/day)		
GrassCheck plots	75.4	
Dairy farms*	74.1	
Beef & sheep farms*	69.0	
Forecast	7 day	71.8
	14 day	78.1

Grass Quality		
	Plots	On-farm
DM (%)	16.2	17.5
ME (MJ/kg DM)	10.8	11.0
CP (% DM)	15.4	16.7
WSC (% DM)	14.4	13.8

\*On-farm grass growth data supplied by AgriNet

# GrassCheck plots receive 270 kgN/ha/year

