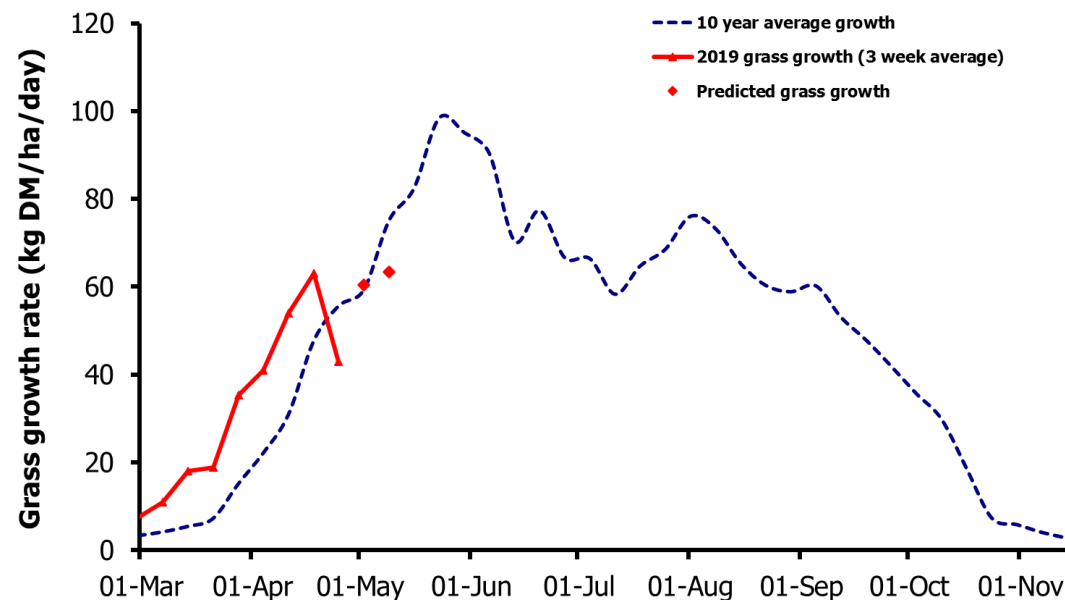
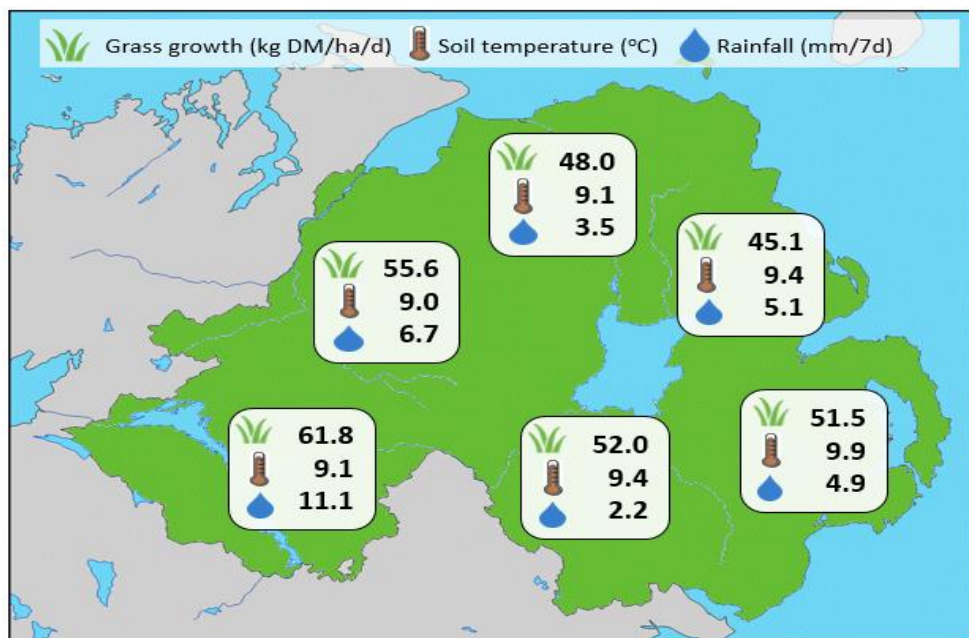


Week Beginning 22 April 2019



| Weekly Grass Growth (kg DM/ha/day) | | |
|---------------------------------------|--------|------|
| GrassCheck plots | | 33.0 |
| Dairy farms* | | 60.5 |
| Beef & sheep farms* | | 43.6 |
| Forecast | 7 day | 60.4 |
| | 14 day | 63.4 |

| Grass Quality | | |
|---------------|-------|---------|
| | Plots | On-farm |
| DM (%) | 17.2 | 17.2 |
| ME (MJ/kg DM) | 11.5 | 11.9 |
| CP (% DM) | 21.7 | 18.9 |
| WSC (% DM) | 11.6 | 14.3 |

MANAGEMENT NOTES:

- GrassCheck plot growth rates have dropped slightly this week owing to cooler temperatures at the monitoring sites however on-farm growth rates remain high. With temperature forecasts remaining low for the coming weeks, the exceptionally high growth we have seen so far this year is more likely to return to the seasonal average.
- Reseeded areas are performing particularly well, owing to the mild conditions last autumn/winter. Active grazing of these areas in the first year will encourage tillering and improved sward density.
- A series of 4 GrassCheck farm walks will be held from 24 – 1 May. Further details are available on the AgriSearch website www.agrisearch.org

*On-farm grass growth data supplied by AgriNet

GrassCheck plots receive 270 kgN/ha/year



@GrassCheck