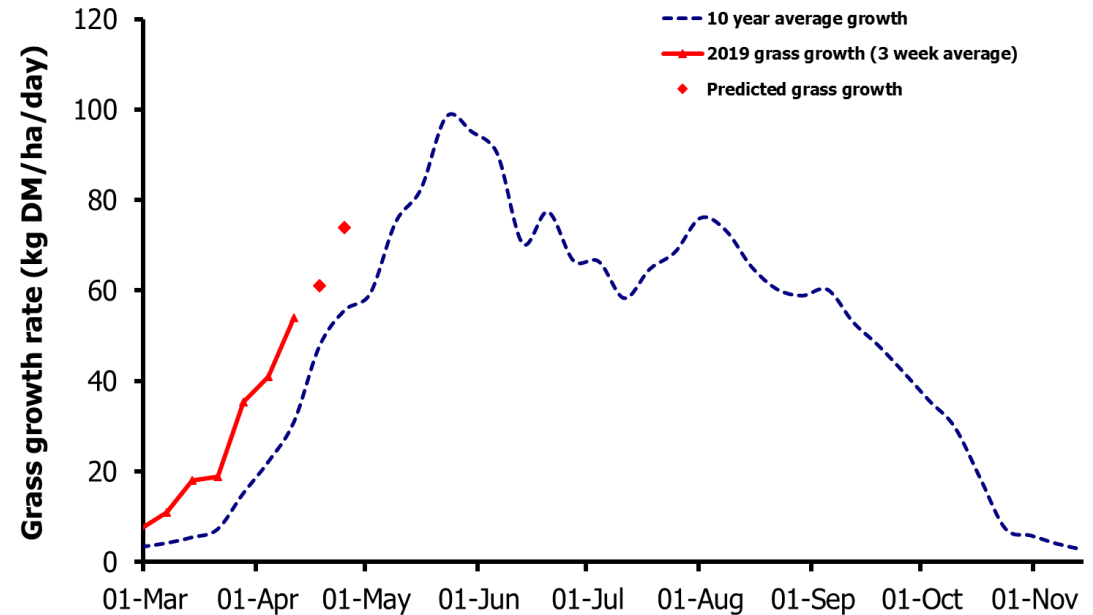
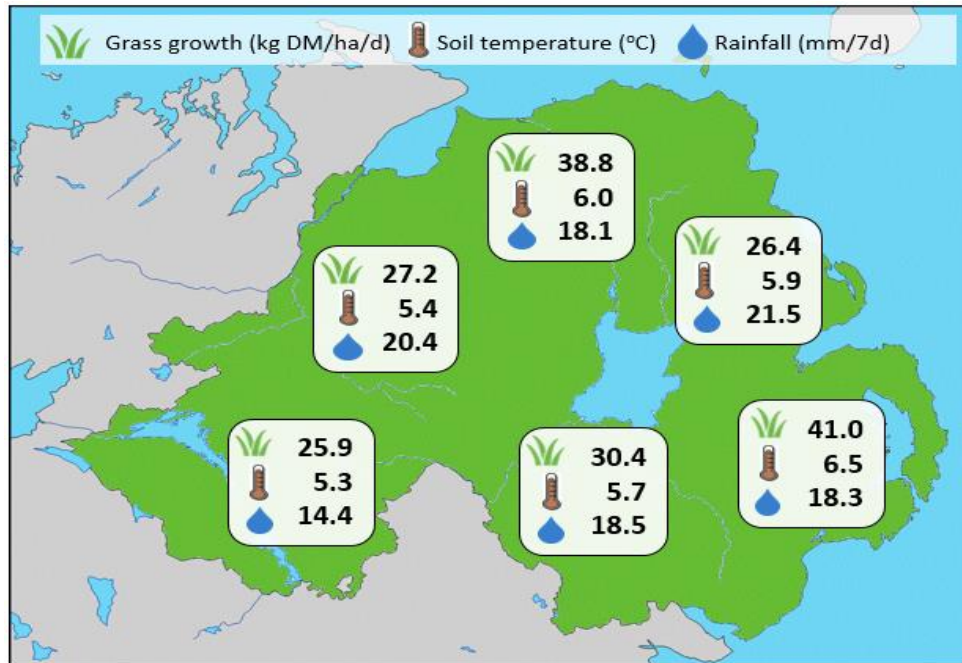


## Week Beginning 8 April 2019



Weekly Grass Growth (kg DM/ha/day)		
GrassCheck plots		53.9
Dairy farms*		34.6
Beef & sheep farms*		32.8
Forecast	7 day	61.1
	14 day	74.0

Grass Quality		
	Plots	On-farm
<b>DM</b> (%)	17.0	19.0
<b>ME</b> (MJ/kg DM)	11.9	11.5
<b>CP</b> (% DM)	21.4	17.9
<b>WSC</b> (% DM)	14.5	15.9

### MANAGEMENT NOTES:

- Despite cooler conditions this past week, plot growth rates have remained strong however on-farm growth is similar to last week, averaging 33.7kg DM/ha/d.
- With grass growth expected to continue significantly above average, grass surpluses are likely to build in the coming weeks. Walk fields now to identify high covers and prioritise areas for grazing or removal for silage. Ground conditions are improving providing opportunities to graze swards out cleanly to target residual (1,500 – 1,800 kg DM/ha).
- A series of four GrassCheck farm walks will be held from 24 April – 1 May. Further details are available on the AgriSearch website [www.agrisearch.org](http://www.agrisearch.org)

\*On-farm grass growth data supplied by AgriNet

# GrassCheck plots receive 270 kgN/ha/year

