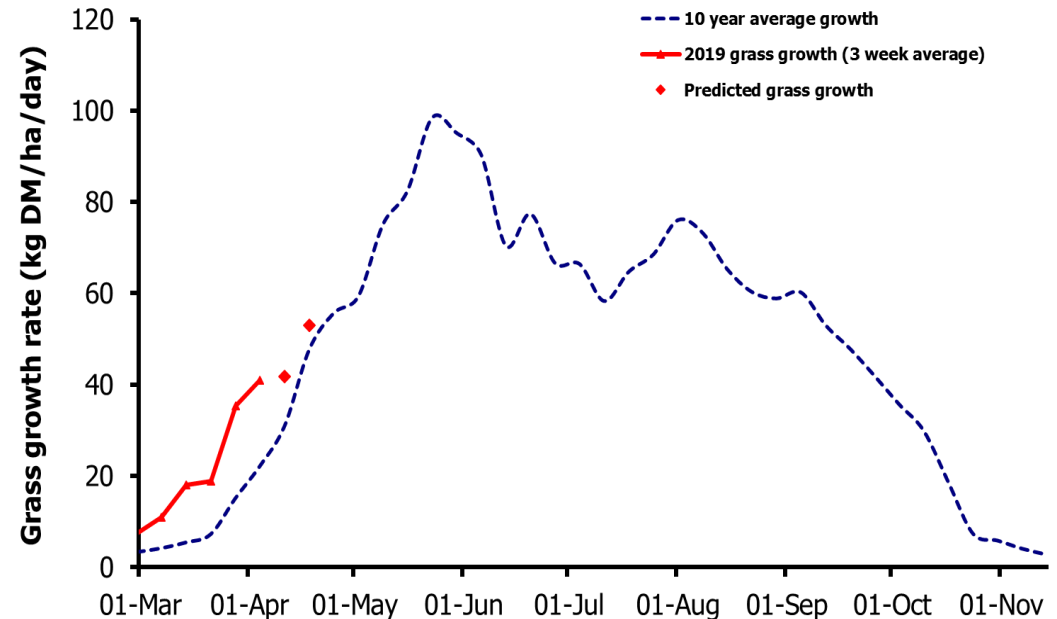
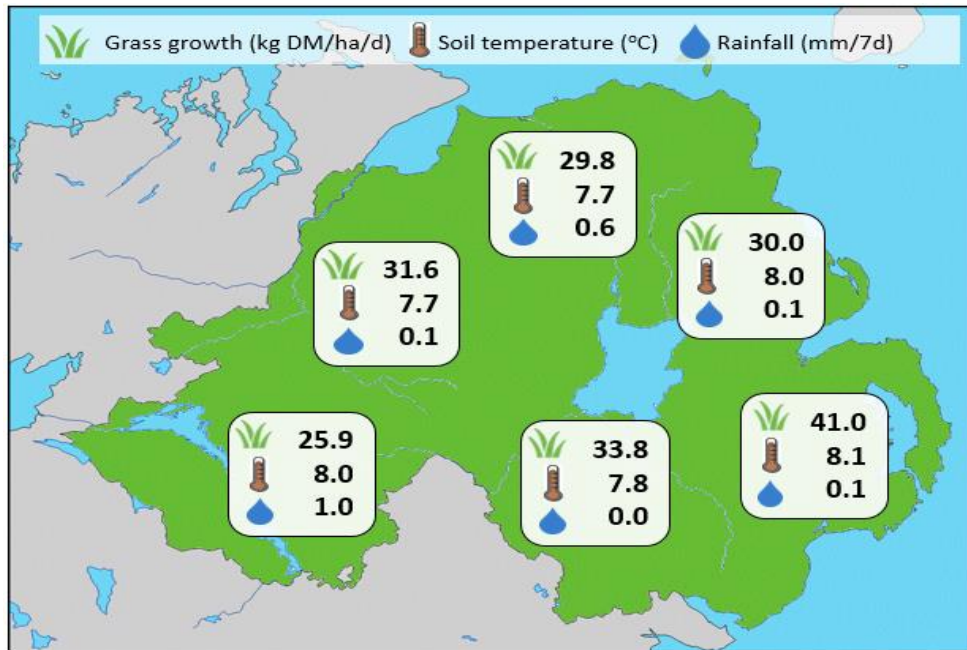


Week Beginning 1 April 2019



Weekly Grass Growth (kg DM/ha/day)		
GrassCheck plots		41.0
Dairy farms*		32.9
Beef & sheep farms*		33.9
Forecast	7 day	41.7
	14 day	52.9

	Grass Quality	
	Plots	On-farm
DM (%)	19.4	20.7
ME (MJ/kg DM)	12.0	11.9
CP (% DM)	22.6	21.2
WSC (% DM)	14.1	14.0

MANAGEMENT NOTES:

- Once again growth remains well above average for this time of year, and limited rainfall this week has provided good grazing conditions.
- Growth rates are expected to be checked slightly by the cooler weather forecast this coming week however as average farm cover remain high, there are grass surpluses which should be taken advantage.
- Grass quality also remains high again this week with high ME content supporting good animal performance
- With grazing conditions remaining favourable, opportunities to graze off higher covers should be taken now to ensure target residuals are reached.

*On-farm grass growth data supplied by AgriNet

GrassCheck plots receive 270 kgN/ha/year

