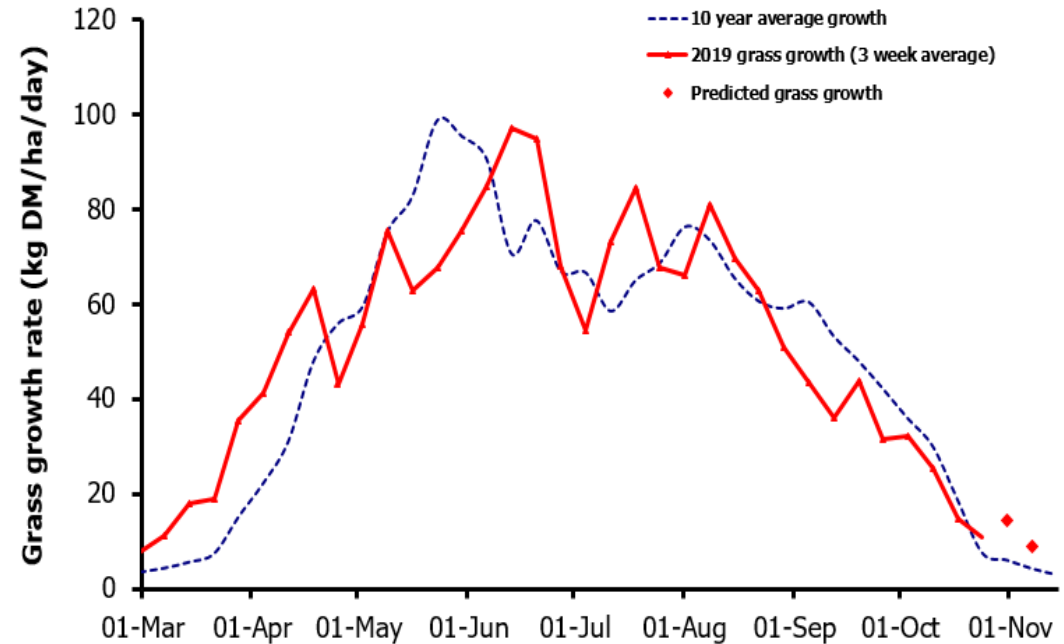
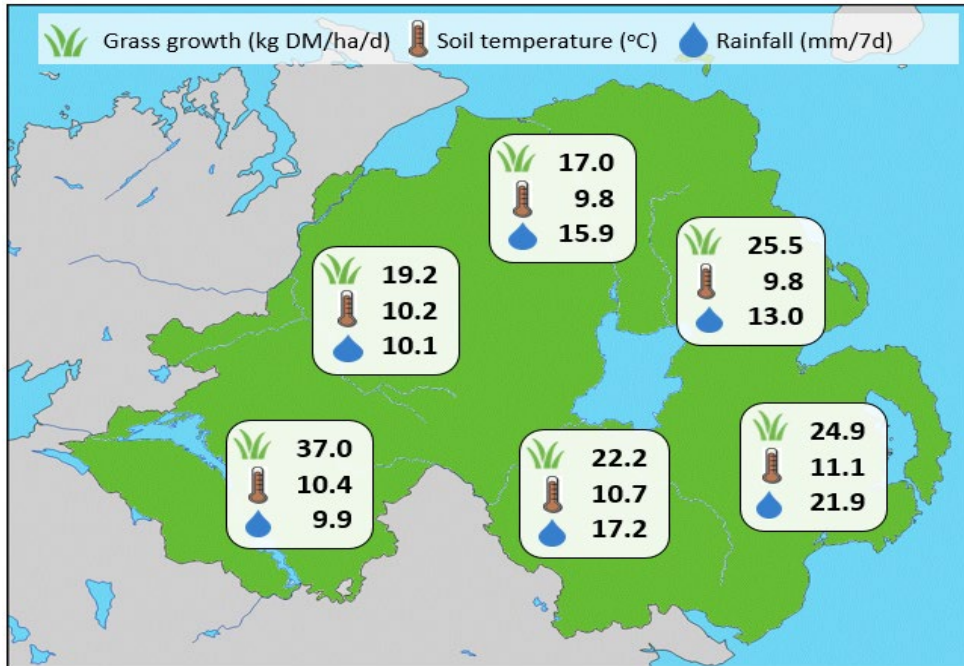


## Week Beginning 21 October 2019



Weekly Grass Growth (kg DM/ha/day)		
GrassCheck plots		10.7
Dairy farms*		23.6
Beef & sheep farms*		21.2
Forecast	7 day	14.4
	14 day	8.8

	Grass Quality	
	Plots	On-farm
<b>DM</b> (%)	14.7	16.1
<b>ME</b> (MJ/kg DM)	11.6	11.1
<b>CP</b> (% DM)	23.1	20.7
<b>WSC</b> (% DM)	9.5	11.3

### MANAGEMENT NOTES:

- GrassCheck plots have seen growth rates decline further this week, after higher rainfall and colder night-time temperatures than were forecast.
- In 2019 GrassCheck plots produced 12.741 t DM/ha, 185 kg above the LT av.
- Grass is still growing above the long-term average of 7.3 kg DM/ha/d on some GrassCheck farms, but with ground conditions deteriorating and growth slowing significantly many farms have housed all stock for the winter.
- This is now the final weekly bulletin for the 2019 season. Many thanks to the teams at AFBI, CAFRE and AgriSearch, and to all the GrassCheck farmers for their contributions all year. Look out for new GrassCheck updates in spring!

\*On-farm grass growth data supplied by AgriNet

# GrassCheck plots receive 270 kgN/ha/year

