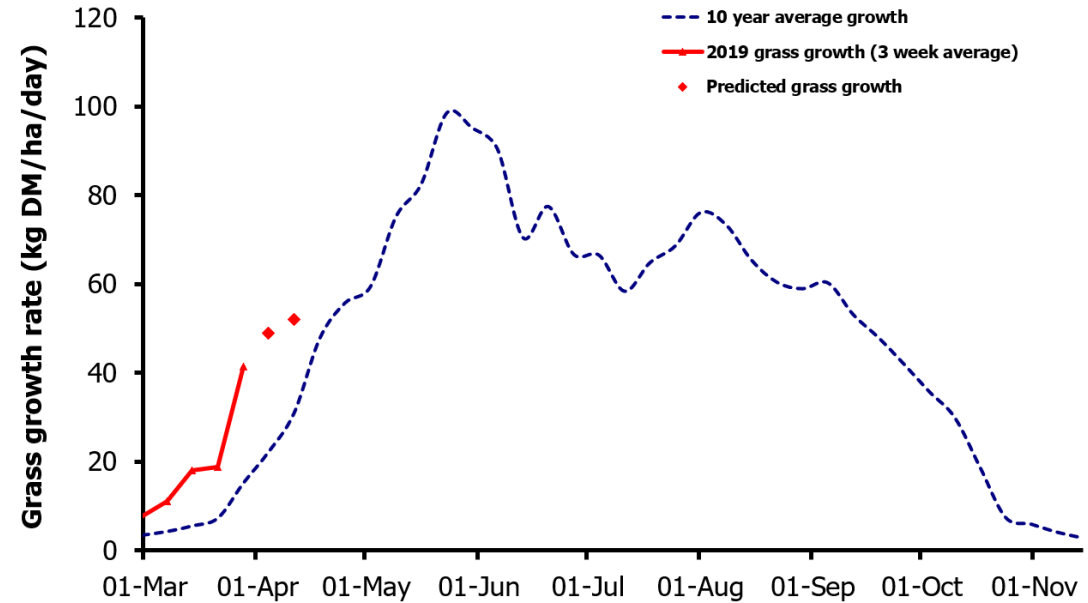
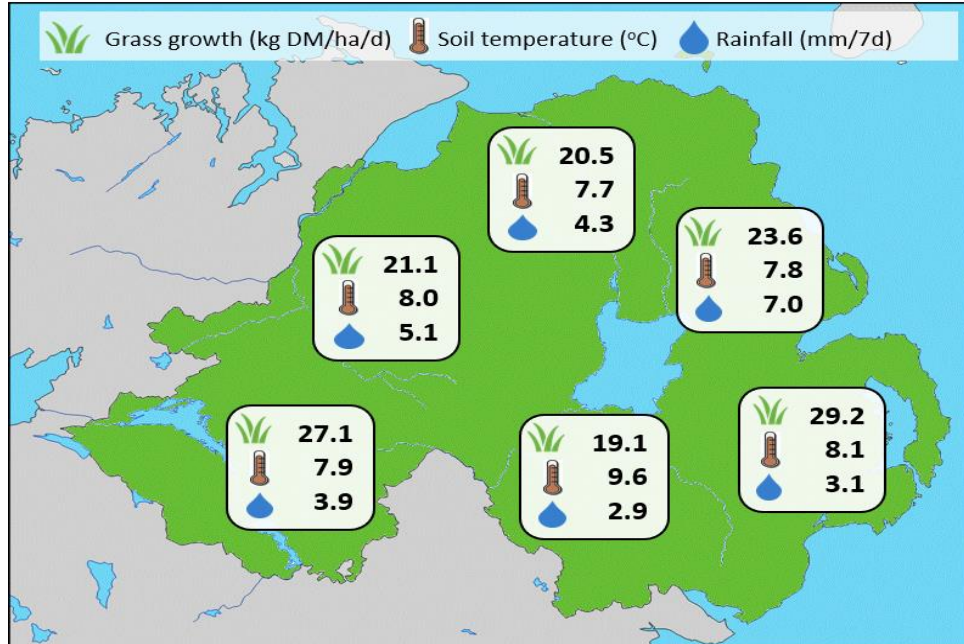


Week Beginning 25 March 2019



Weekly Grass Growth (kg DM/ha/day)		
GrassCheck plots		41.3
Dairy farms*		23.8
Beef & sheep farms*		25.4
Forecast	7 day	48.9
	14 day	52.0

	Grass Quality	
	Plots	On-farm
DM (%)	18.4	18.5
ME (MJ/kg DM)	12.0	12.0
CP (% DM)	23.1	21.7
WSC (% DM)	12.8	13.4

MANAGEMENT NOTES:

- Grass growth continues to be well above the seasonal average on both monitored plots and commercial farms.
- Soil temperatures are continuing to rise supporting above average grass growth, especially where nutrients have been applied
- The forecast dry weather provides a good opportunity to make the most of this high-quality spring grass which will deliver high levels of animal performance.
- With high grass covers on many farms and continued good growth it is vital to turn stock out as soon as possible to ensure good utilisation and maximise grass quality later in the season.

*On-farm grass growth data supplied by AgriNet

GrassCheck plots receive 270 kgN/ha/year

