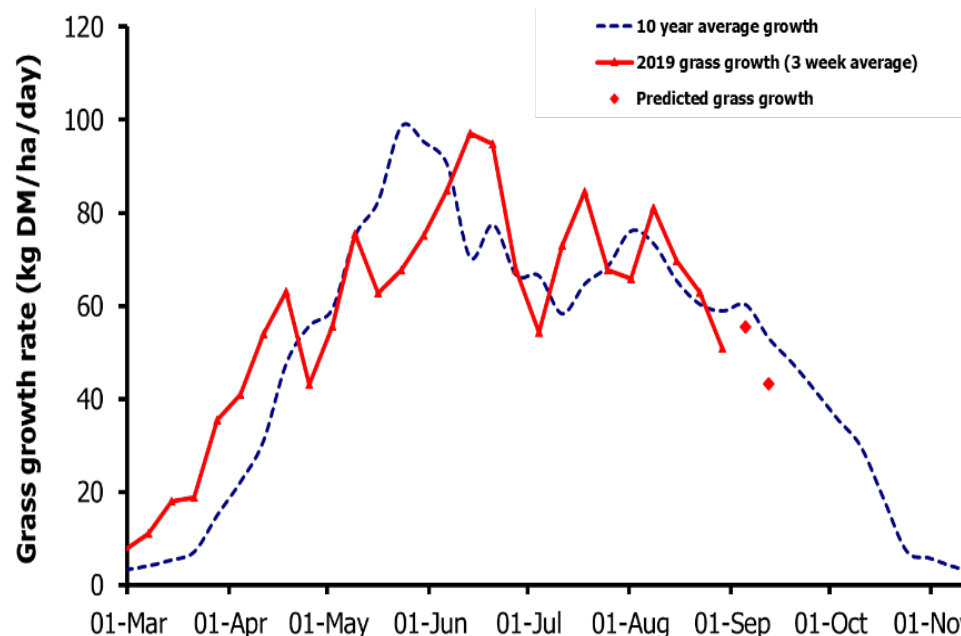
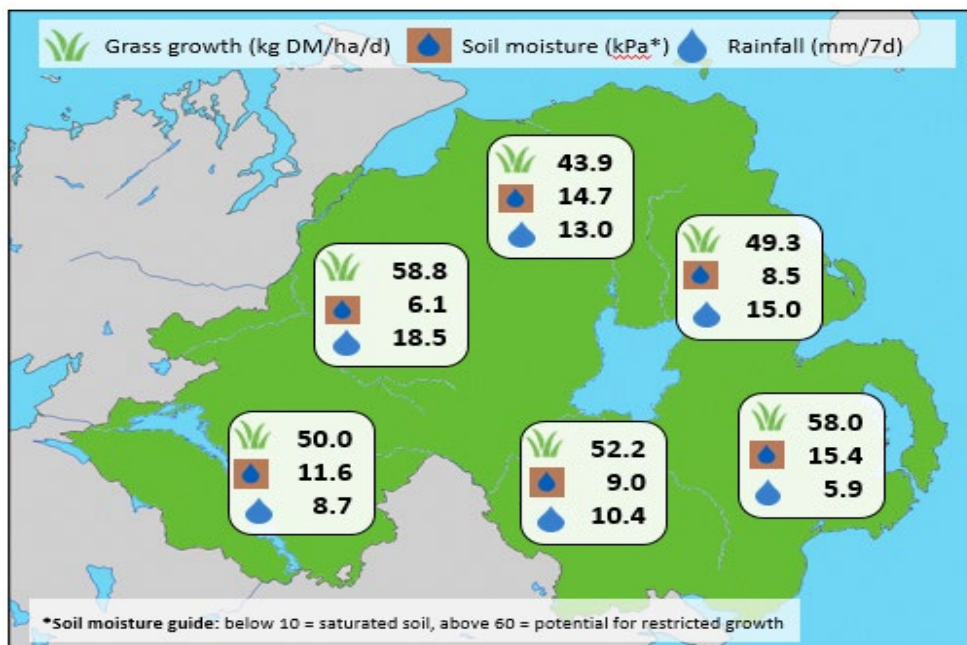


Week Beginning 26 August 2019



Weekly Grass Growth (kg DM/ha/day)		
GrassCheck plots		50.8
Dairy farms*		58.5
Beef & sheep farms*		50.0
Forecast	7 day	55.4
	14 day	43.3

	Grass Quality	
	Plots	On-farm
DM (%)	15.7	16.0
ME (MJ/kg DM)	10.8	10.5
CP (% DM)	17.0	13.6
WSC (% DM)	12.1	13.4

MANAGEMENT NOTES:

- Grass growth rates have continued to decline this week on both plots and farm, driven by falling temperatures and rainfall in many areas. With similar conditions expected to prevail over the next few days, growth is forecast to continue to decline as expected for this time of year.
- In some areas ground conditions have become challenging, consider back-fencing, on-off grazing and multiple entrances to minimise the risk of soil damage.
- With autumn a good time for soil remediation work, take the opportunity to assess any paddocks which may be showing signs of compaction to determine next steps.

*On-farm grass growth data supplied by AgriNet

GrassCheck plots receive 270 kgN/ha/year

