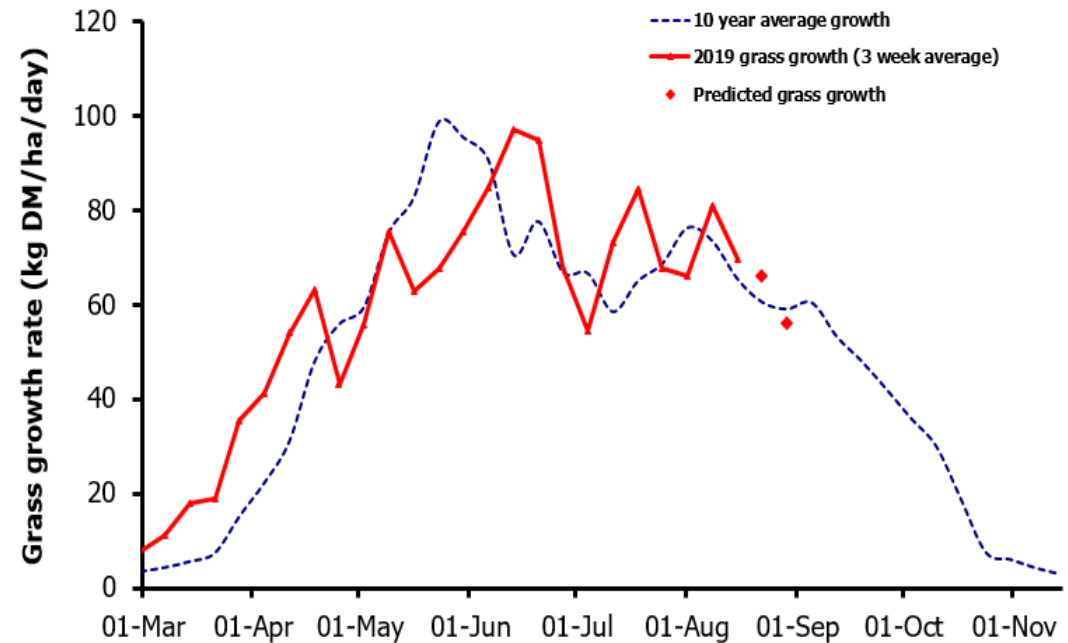
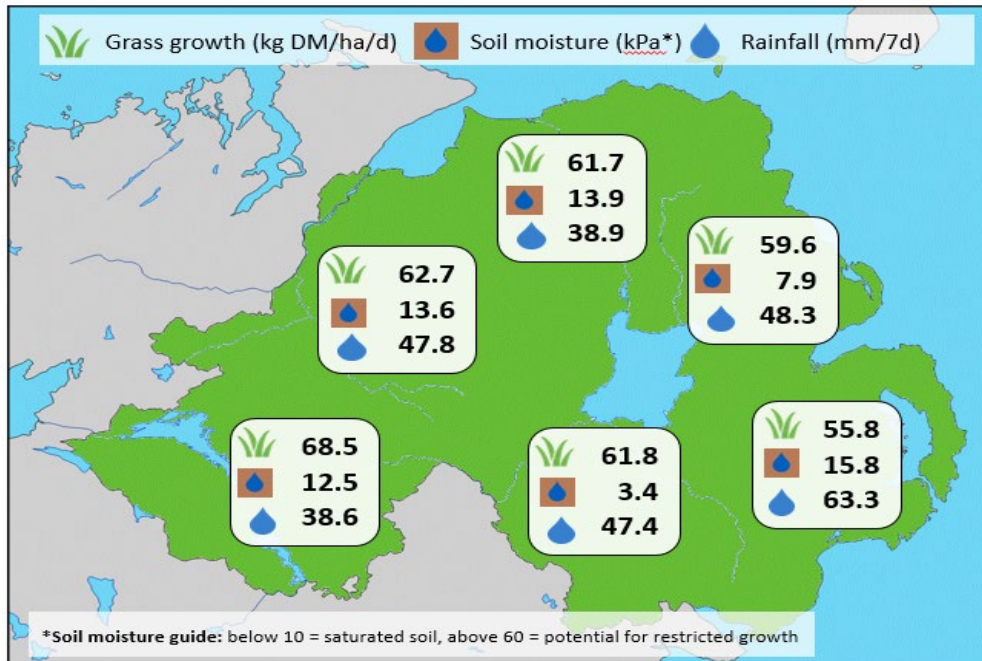


Week Beginning 12 August 2019



Weekly Grass Growth (kg DM/ha/day)		
GrassCheck plots	69.6	
Dairy farms*	71.7	
Beef & sheep farms*	65.5	
Forecast	7 day	60.9
	14 day	47.3

	Grass Quality	
	Plots	On-farm
DM (%)	16.6	13.9
ME (MJ/kg DM)	11.0	10.6
CP (% DM)	16.5	19.1
WSC (% DM)	15.7	8.9

MANAGEMENT NOTES:

- Grass growth rates across the GrassCheck project are currently trending above the long-term average of 65.3 kg DM/ha/d for mid-August.
- There has been some significant rainfall in the past week and one GrassCheck Farm has recorded >100 mm of rain over the past 7 days. Further rain and cloudy conditions in the current weather forecast, with cooler night-time temperatures, are pushing down the grass growth predictions for the next 7 and 14 days.
- With Grass ME lower than expected at present, where wet weather makes achieving your target residual difficult consider topping paddocks or grazing off with a separate mob if available. This will help to support good quality regrowth.

*On-farm grass growth data supplied by AgriNet

GrassCheck plots receive 270 kgN/ha/year

