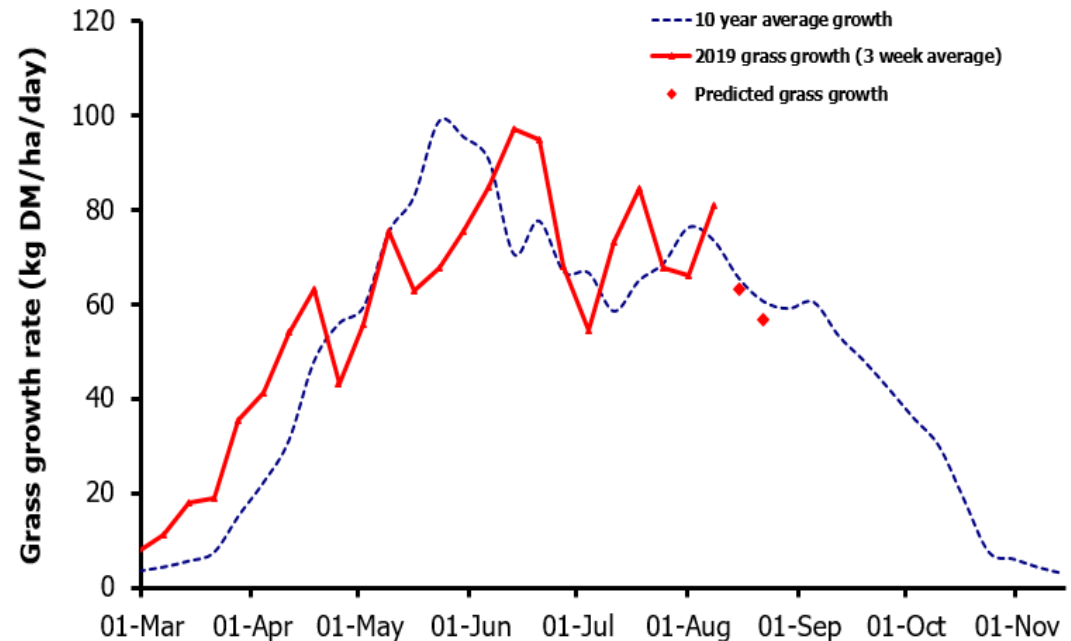
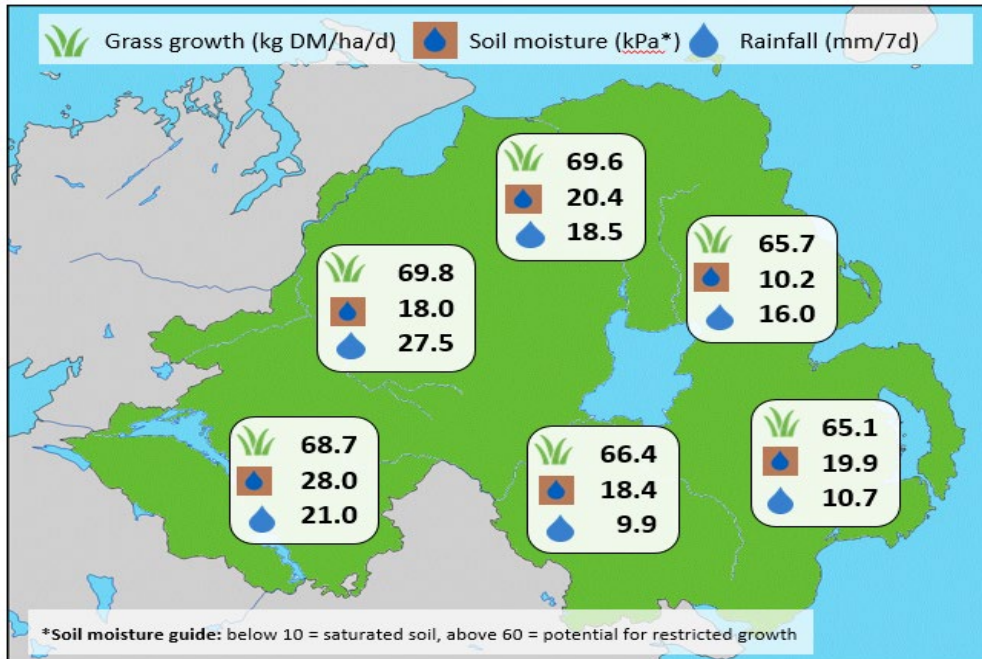


Week Beginning 5 August 2019



Weekly Grass Growth (kg DM/ha/day)		
GrassCheck plots		81.0
Dairy farms*		68.4
Beef & sheep farms*		62.8
Forecast	7 day	63.2
	14 day	56.5

Grass Quality		
	Plots	On-farm
DM (%)	14.9	16.7
ME (MJ/kg DM)	10.5	10.9
CP (% DM)	17.1	18.2
WSC (% DM)	10.5	11.2

MANAGEMENT NOTES:

- Across the province this week, on-farm growth averaged 67 kg DM/ha/d, but as we enter the latter half of the summer growth rates are expected to decline.
- Grass quality is slightly below expected for this time of year. In good grazing conditions maintenance-plus values of M+ 16 litres can still be achieved however where wet weather is hampering dry matter intakes this may need to be revised downwards.
- With silage surpluses now evident on many farms, now is a good time to identify paddocks for reseeded. Sowing should be completed in August to ensure germination and allow early autumn grazing of reseeded.

*On-farm grass growth data supplied by AgriNet

GrassCheck plots receive 270 kgN/ha/year

