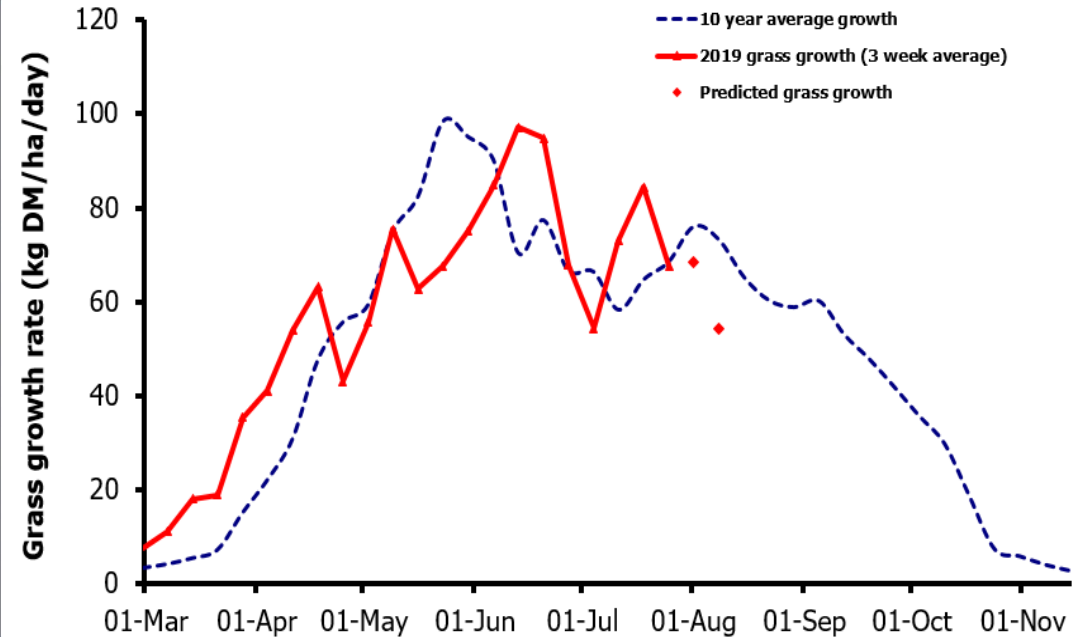
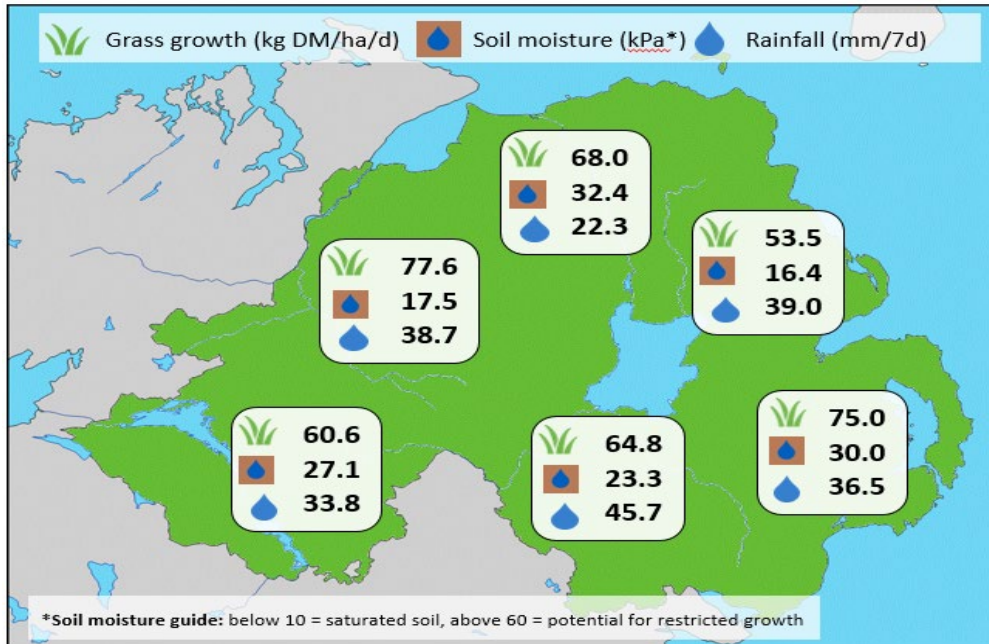


## Week Beginning 22 July 2019



Weekly Grass Growth (kg DM/ha/day)		
GrassCheck plots		67.7
Dairy farms*		78.1
Beef & sheep farms*		63.1
Forecast	7 day	68.3
	14 day	54.3

	Grass Quality	
	Plots	On-farm
DM (%)	15.7	14.9
ME (MJ/kg DM)	10.5	10.8
CP (% DM)	17.2	19.0
WSC (% DM)	11.4	10.7

### MANAGEMENT NOTES:

- On-farm and plot grass growth rates have returned to around average for late-July this week, at 63-78 kg DM/ha/d compared to the long-term average of 68.6 kg DM/ha/d. The 14 day growth projection again predicts growth to dip because of high cloud cover and slightly cooler conditions currently forecast.
- Grass ME has fallen again this week. With regular grass sampling, concentrate rations can be adjusted to maintain animal performance where needed.
- August is a good time for reseeding paddocks to ensure new swards establish successfully. Assess paddock performance to-date and sward composition (especially where swards are <60% PRG) to prioritise fields for reseeding.

\*On-farm grass growth data supplied by AgriNet

# GrassCheck plots receive 270 kgN/ha/year

