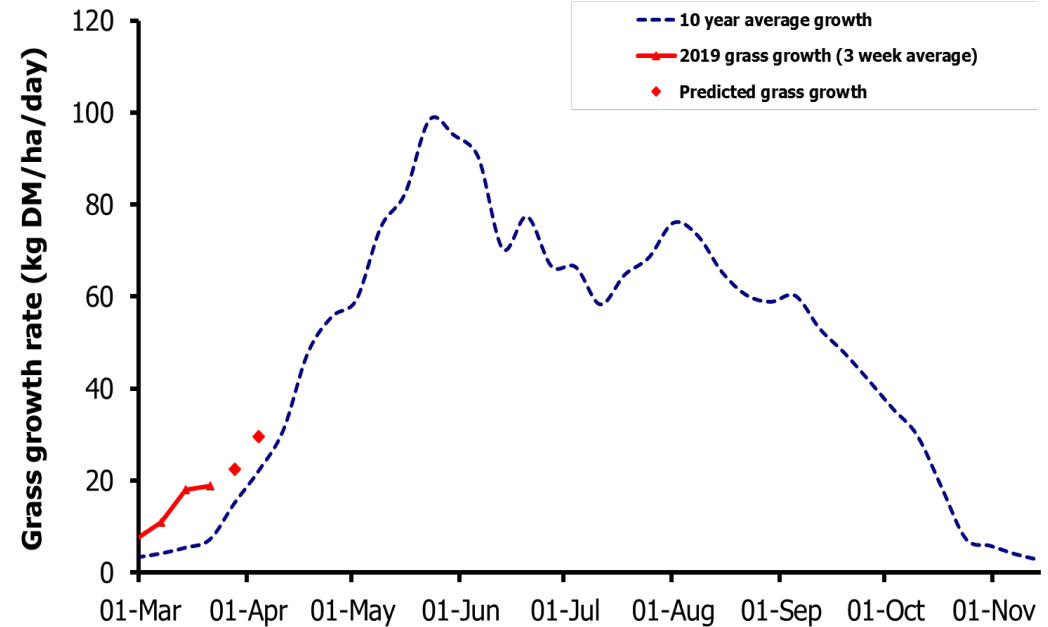
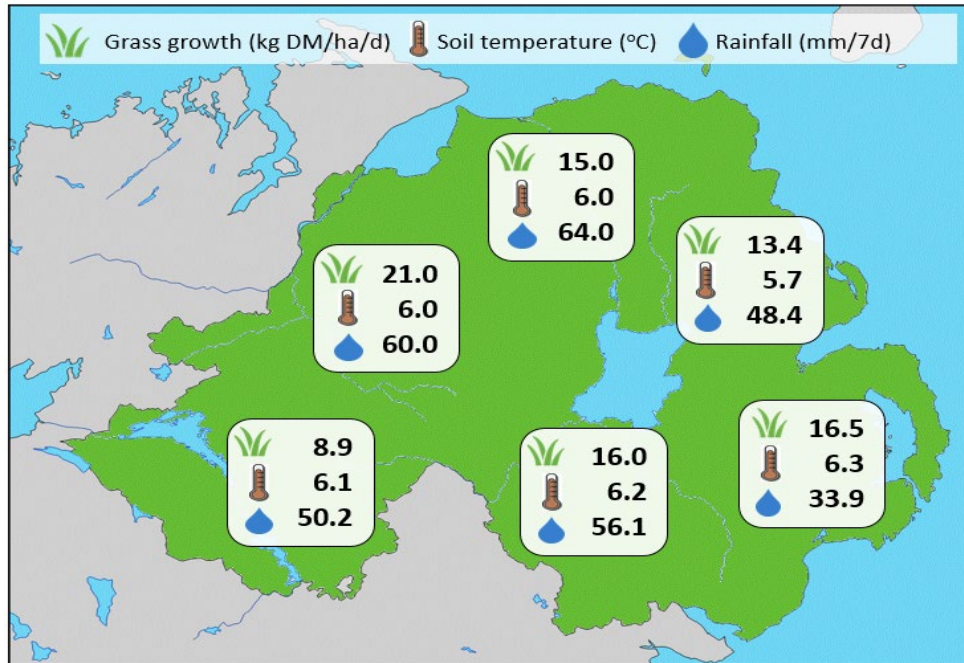


Week Beginning 18 March 2019



| Weekly Grass Growth (kg DM/ha/day) | | |
|------------------------------------|--------|------|
| GrassCheck plots | 18.8 | |
| Dairy farms* | 15.3 | |
| Beef & sheep farms* | 16.7 | |
| Forecast | 7 day | 22.4 |
| | 14 day | 29.6 |

| | Grass Quality | |
|---------------|---------------|---------|
| | Plots | On-farm |
| DM (%) | 19.7 | 19.0 |
| ME (MJ/kg DM) | 11.1 | 11.0 |
| CP (% DM) | 24.8 | 20.8 |
| WSC (% DM) | 10.2 | 12.9 |

MANAGEMENT NOTES:

- A warm mild winter and early spring has meant grass growth rates this season have started well above average on both monitored plots and commercial farms.
- Although soil temperatures have fallen slightly in the past week, these are set to rise with good weather forecast. This will support continued good grass growth rates and response to fertiliser.
- The recent heavy rainfall has caused ground conditions on many farms to deteriorate. However, with average farm cover continually increasing it will be important to achieve turnout as soon as conditions improve to take advantage of the high grass quality at present.

*On-farm grass growth data supplied by AgriNet

GrassCheck plots receive 270 kgN/ha/year

