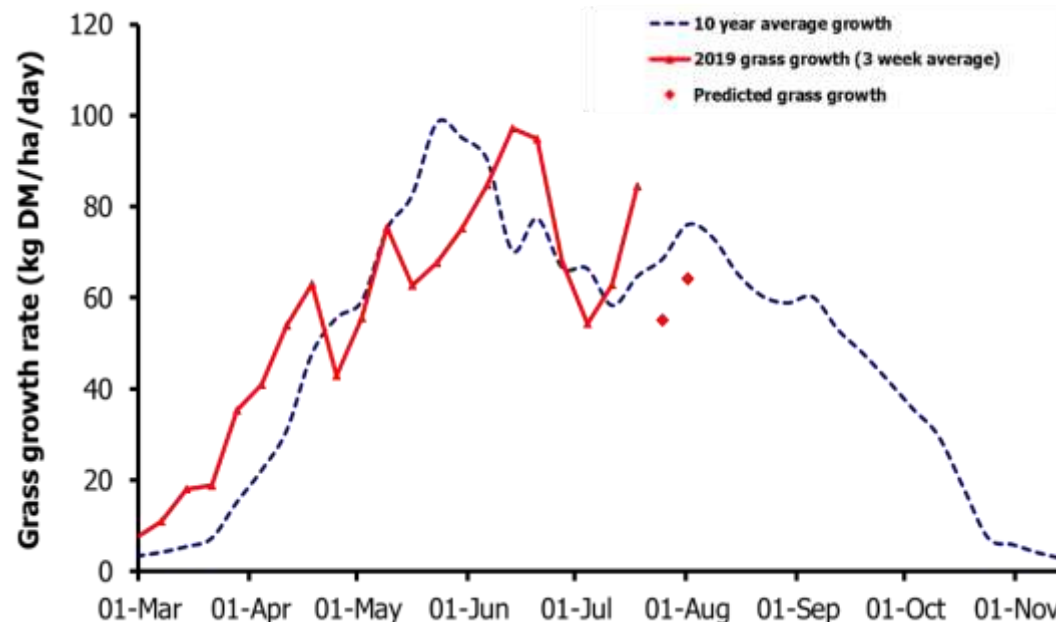
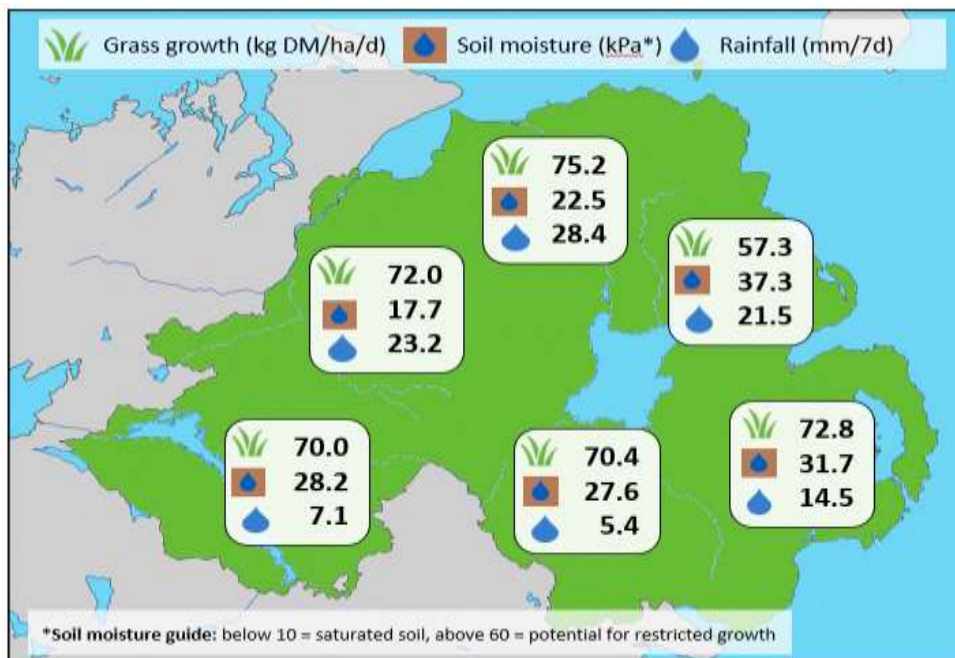


Week Beginning 15 July 2019



Weekly Grass Growth (kg DM/ha/day)		
GrassCheck plots	84.5	
Dairy farms*	80.9	
Beef & sheep farms*	60.5	
Forecast	7 day	55.1
	14 day	64.2

	Grass Quality	
	Plots	On-farm
DM (%)	15.4	17.3
ME (MJ/kg DM)	10.9	11.2
CP (% DM)	19.2	17.6
WSC (% DM)	11.5	13.9

MANAGEMENT NOTES:

- With warm conditions prevailing and many areas receiving rainfall at the start of last week, growth rates have jumped again this week and are recording over 100kg DM/ha/day on some farms across the province.
- Forecasts are expecting grass growth to fall due to low soil moisture levels in the coming weeks however localised rainfall will likely keep growth rates high in some areas.
- Grass quality remains slightly below average for this time of year. Consider topping or pre-mowing paddocks to reinstate residuals and improve quality at the next rotation.

*On-farm grass growth data supplied by Agrinet

GrassCheck plots receive 270 kgN/ha/year

