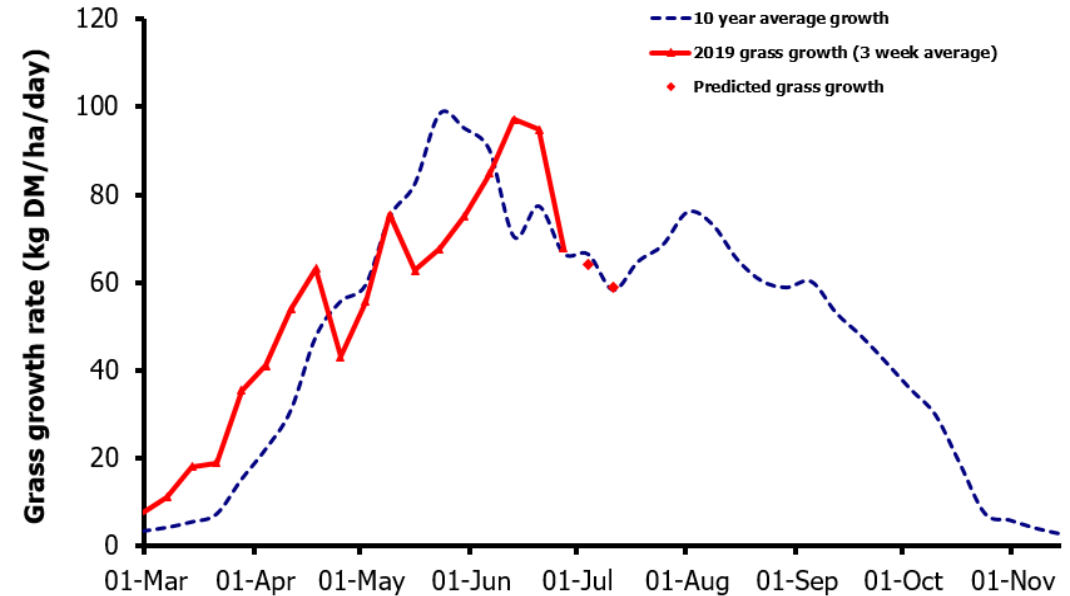
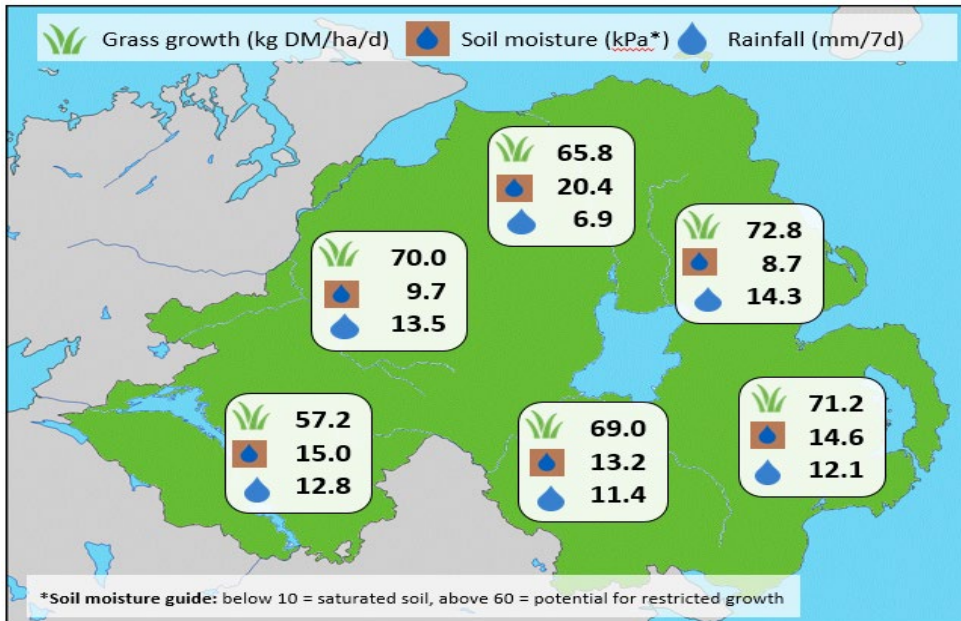


Week Beginning 24 June 2019



MANAGEMENT NOTES:

- With cooler, wetter conditions this past week, growth rates on plots and farms have fallen back to expected levels for this time of year, averaging 69.0 and 67.8 kg DM/ha/d, respectively.
- With heavy rainfall events affecting many areas of the province recently, grazing conditions have been difficult, and some swards have become stemmy. The forecast good weather over the next few days provides a good opportunity to remove mature grass through pre-mowing or baling to improve grass quality for subsequent rotations. With growth rates falling, make sure to monitor grass supply against demand prior to taking out paddocks.
- GrassCheck will be featured at the NSA SheepNI Event on Monday 1 July.

Weekly Grass Growth (kg DM/ha/day)		
GrassCheck plots		67.8
Dairy farms*		73.6
Beef & sheep farms*		65.7
Forecast	7 day	64.1
	14 day	59.0

	Grass Quality	
	Plots	On-farm
DM (%)	15.3	17.8
ME (MJ/kg DM)	11.2	11.2
CP (% DM)	16.7	15.9
WSC (% DM)	14.9	15.5

*On-farm grass growth data supplied by AgriNet

GrassCheck plots receive 270 kgN/ha/year

