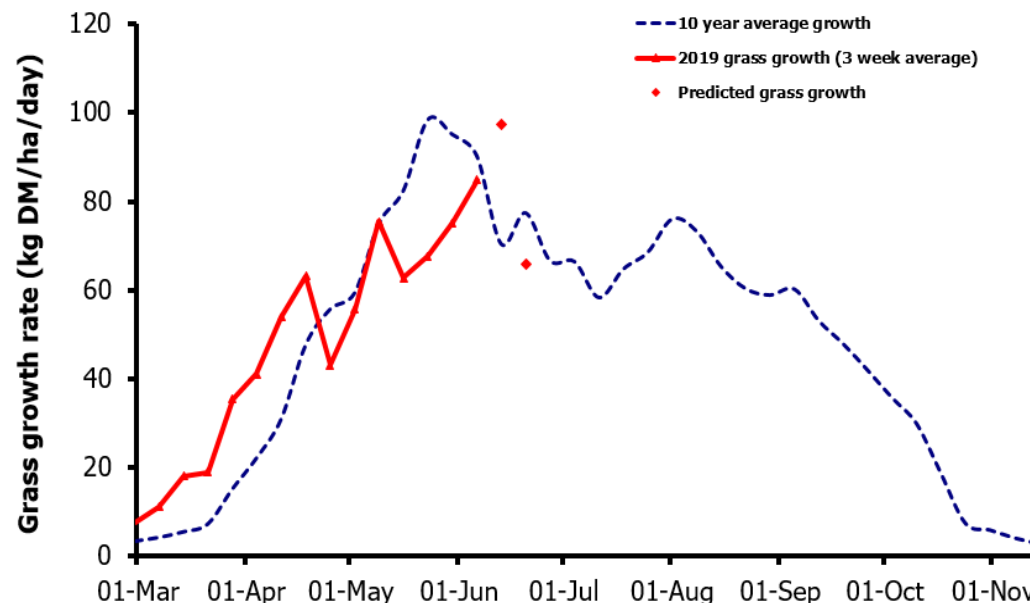
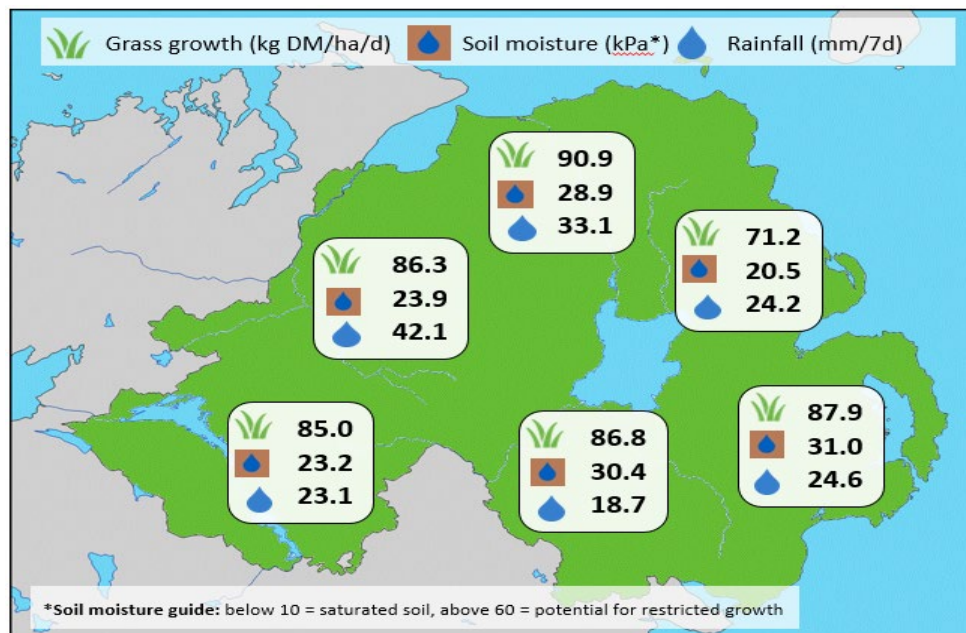


Week Beginning 03 June 2019



MANAGEMENT NOTES:

- Grass growth has remained strong and is consistent between farm types and plots this week at 84.9-87.0 kg DM/ha/day on average. Growth is predicted to continue well over the next week to peak at around 97.5 kg DM/ha/day, but is then expected to decline, with cooler temperatures forecast.
- Regularly measuring the grazing platform will help to manage grass allocations as we approach the mid-point in the season. Seed heads are now visible in swards so consider pre-mowing to maintain grass quality in the next rotation.
- Where growth rates are high, reducing the rotation length (16-21 days at present) can help to manage grass covers and avoids putting stock into excessive covers (above 3300 kg DM/ha).

Weekly Grass Growth (kg DM/ha/day)		
GrassCheck plots		84.9
Dairy farms*		87.0
Beef & sheep farms*		86.6
Forecast	7 day	97.5
	14 day	65.8

	Grass Quality	
	Plots	On-farm
DM (%)	15.8	15.7
ME (MJ/kg DM)	11.2	11.2
CP (% DM)	19.4	19.3
WSC (% DM)	12.4	12.8

*On-farm grass growth data supplied by AgriNet

GrassCheck plots receive 270 kgN/ha/year

