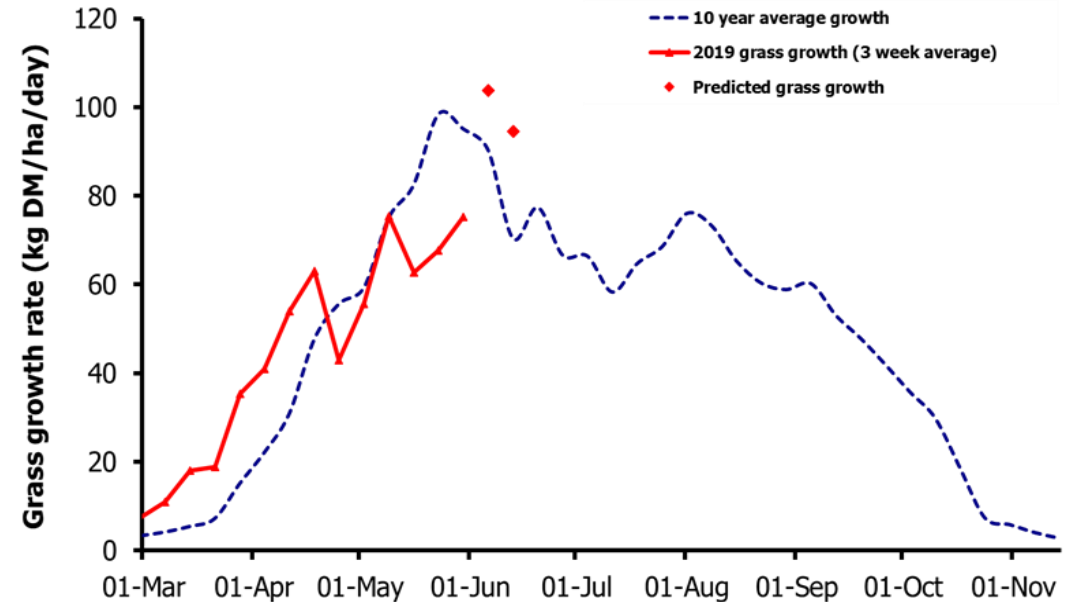
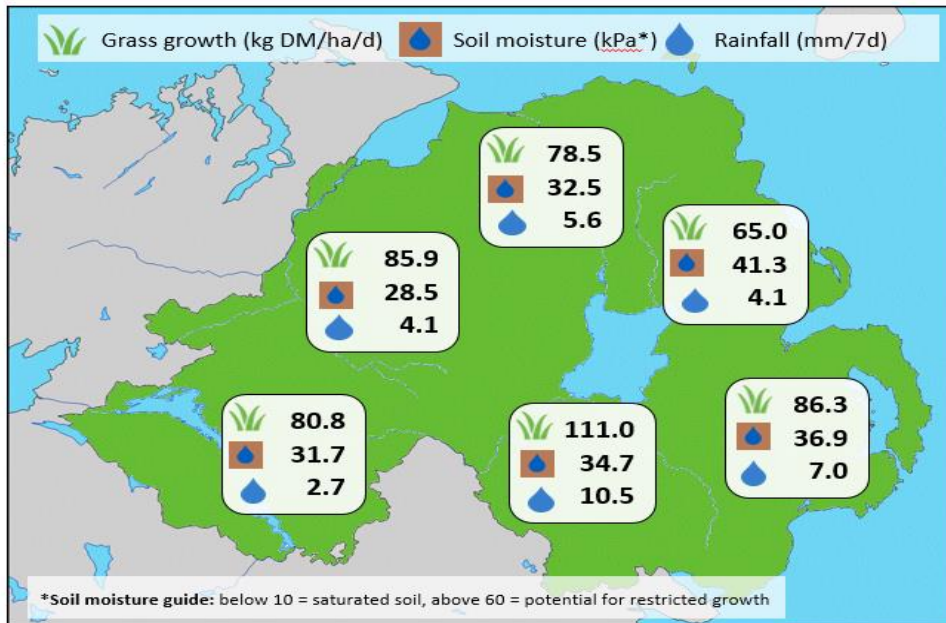


Week Beginning 27 May 2019



MANAGEMENT NOTES:

- Strong growth rates (GR) have been seen on both Dairy and Beef/Sheep farms this last week, with average growth up >13 kg DM/ha/day. Warm air temperatures and rainfall replenishing soil moisture stores will have supported good growth. Plot GR (3 week average) were below predicted however this is a carry-over from low growth in the previous 2 weeks. Plot platemeter results from the past 7 days indicate GR over 100kg DM/ha/d, typical for this time of year.
- Grass quality remains good across the province, with average CP up to 17.8% and an average ME of 11.6 MJ/kg DM on GrassCheck farms. Regularly assess supplementary feeding and the value of grass intakes to support production. In current conditions, 17+ kg/DM/cow/d are achievable with grazing dairy cows.

Weekly Grass Growth (kg DM/ha/day)		
GrassCheck plots	75.2	
Dairy farms*	85.9	
Beef & sheep farms*	76.0	
Forecast	7 day	103.7
	14 day	94.5

	Grass Quality	
	Plots	On-farm
DM (%)	18.8	20.3
ME (MJ/kg DM)	11.5	11.6
CP (% DM)	19.3	17.8
WSC (% DM)	15.7	17.2

*On-farm grass growth data supplied by AgriNet

GrassCheck plots receive 270 kgN/ha/year

