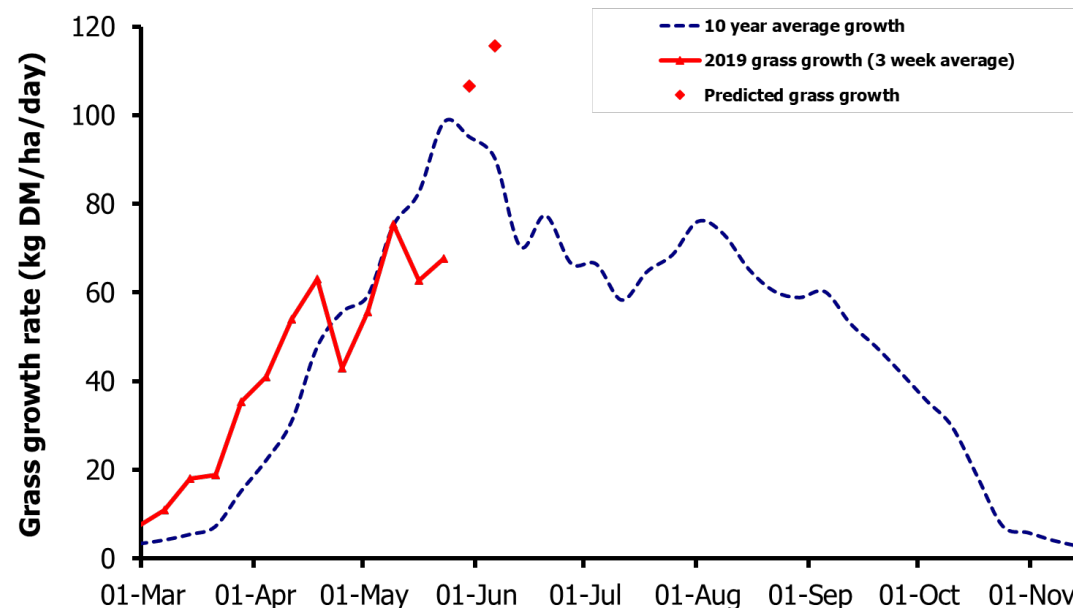
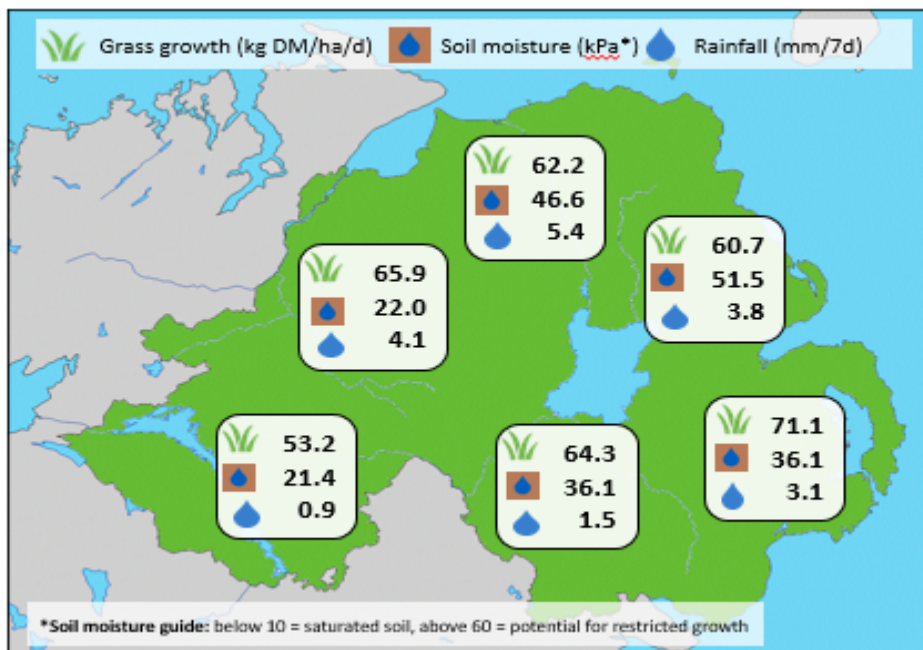


Week Beginning 20 May 2019



MANAGEMENT NOTES:

- Average growth rates on the GrassCheck plots averaged 67.7kg DM/ha/day. Dairy farm growth has increased 12 kg DM/ha/day since last week, but growth on Beef/Sheep farms has remained similar to last week. Strong growth rates are still forecast for the next 2 weeks.
- Soil moisture data show increasingly dry conditions again. Predicted growth could be restricted on dry farms or those that miss out on any forecast rainfall.
- Recent rain showers have hampered some attempts to cut and bring in silage, but with grass heading dates fast approaching sward D-values will begin to fall significantly. Where ear emergence has started, D-value can drop up to 5% per day so make every effort to cut silage before heading takes place.

Weekly Grass Growth (kg DM/ha/day)		
GrassCheck plots		67.7
Dairy farms*		72.3
Beef & sheep farms*		57.8
Forecast	7 day	106.6
	14 day	115.6

Grass Quality		
	Plots	On-farm
DM (%)	19.6	20.5
ME (MJ/kg DM)	11.5	11.5
CP (% DM)	16.4	16.4
WSC (% DM)	17.0	17.7

*On-farm grass growth data supplied by AgriNet

GrassCheck plots receive 270 kgN/ha/year

