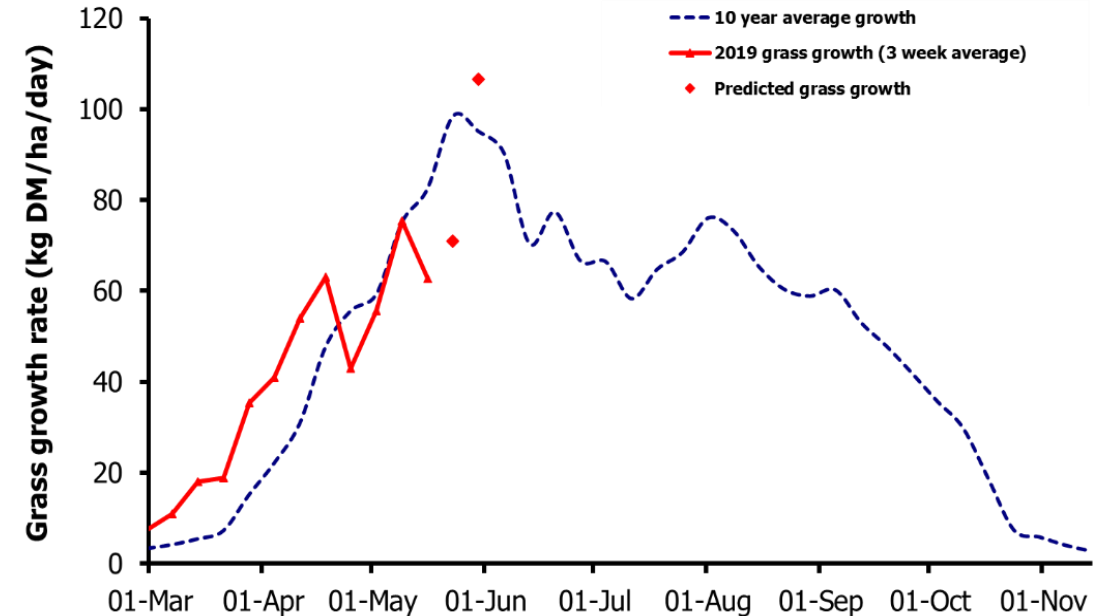
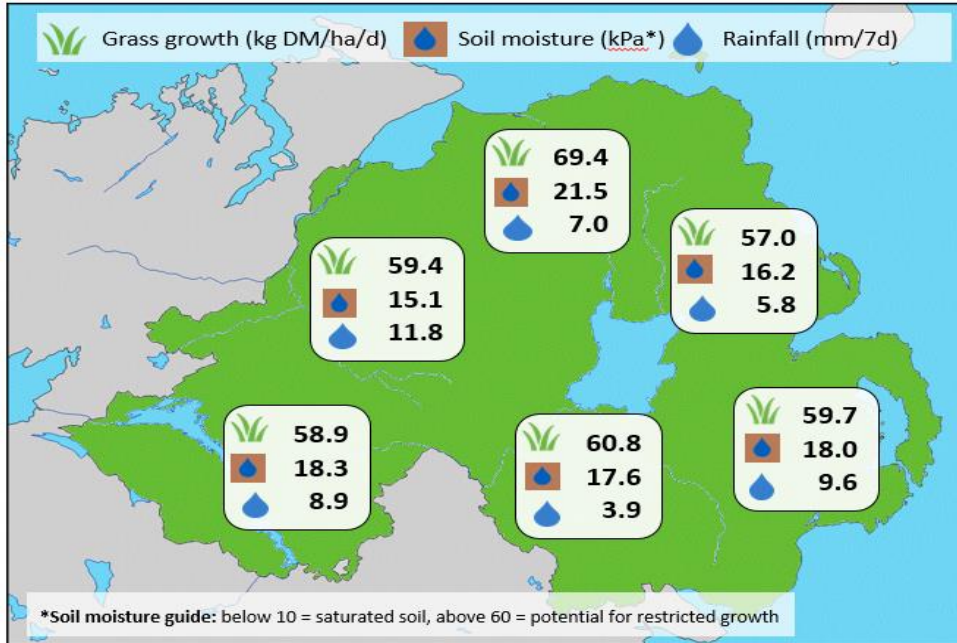


Week Beginning 13 May 2019



Weekly Grass Growth (kg DM/ha/day)		
GrassCheck plots	62.7	
Dairy farms*	59.7	
Beef & sheep farms*	57.5	
Forecast	7 day	70.9
	14 day	106.6

	Grass Quality	
	Plots	On-farm
DM (%)	19.6	16.6
ME (MJ/kg DM)	11.6	11.4
CP (% DM)	16.4	18.4
WSC (% DM)	17.0	15.2

MANAGEMENT NOTES:

- The cooler temperatures have reduced grass growth across farms this week by an average of 11kg DM/ha/day however with sunshine and warmer temperatures returning, growth rates are expected to rise dramatically in the next few weeks.
- The rainfall throughout the last week has replenished soil moisture stores and this will support good growth on drier farms.
- With warmer temperatures and dry weather this coming week, there will be greater gaseous losses of nitrogen with a splash-plate, consider dribble bar or trailing shoe to maximise the amount of nitrogen available for growth.

*On-farm grass growth data supplied by AgriNet

GrassCheck plots receive 270 kgN/ha/year

