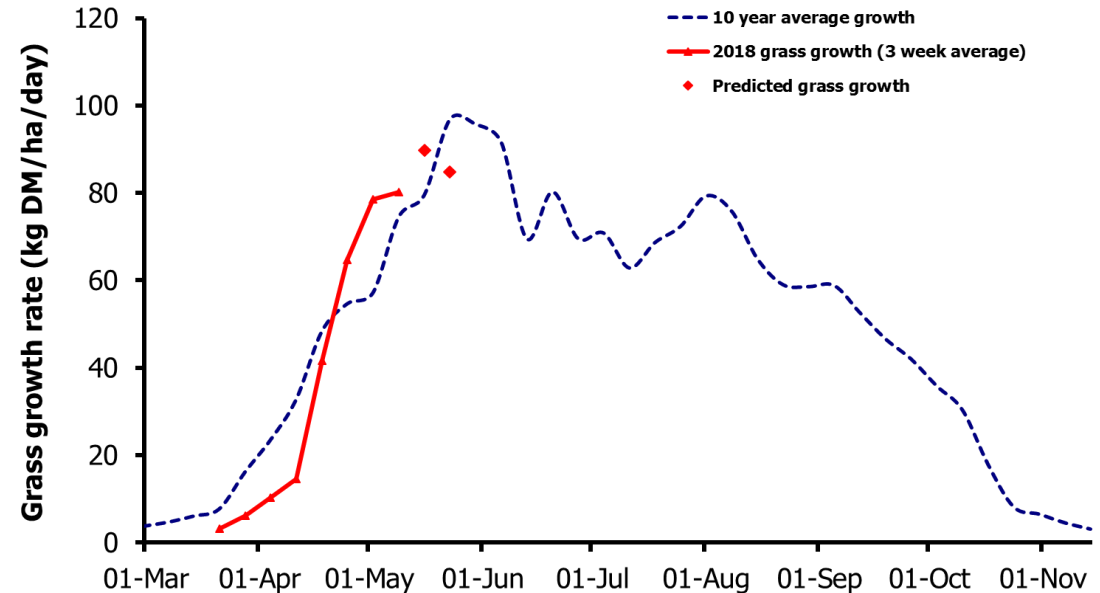
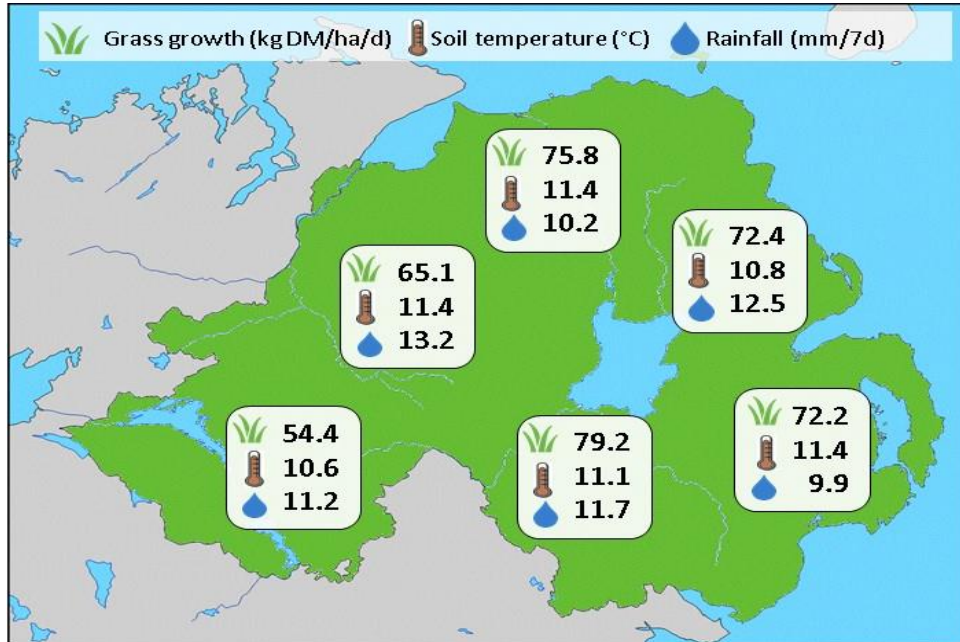


Week Beginning 14 May 2018



MANAGEMENT NOTES:

- Grass growth remains strong this week and average farm covers have risen to over 2500kg DM/ha. With good growth predicted to continue, take opportunities to cut out paddocks with high covers (>3500kg DM/ha).
- The forecast dry weather should support good grass intakes with grazing animals and M+ values in excess of 20kg/cow/day for dairy cows.
- Nitrate concentrations for grass silage ensilability are showing large variation, with late applications of fertiliser contributing to high nitrate levels in some samples, increasing the risk of poor fermentation. Testing will be essential. Be mindful of grass quality as grass heading will start to occur in the next few weeks which will significantly lower grass D-value.

Weekly Grass Growth (kg DM/ha/day)		
GrassCheck plots	80.2	
Dairy farms*	75.8	
Beef & sheep farms*	67.0	
Forecast	7 day	89.7
	14 day	84.8

	Grass Quality	
	Plots	On-farm
DM (%)	15.8	19.7
ME (MJ/kg DM)	12.0	12.3
CP (% DM)	18.5	20.1
WSC (% DM)	15.7	16.4

* On-farm grass growth data supplied by AgriNet

GrassCheck plots receive 270 kgN/ha/year

