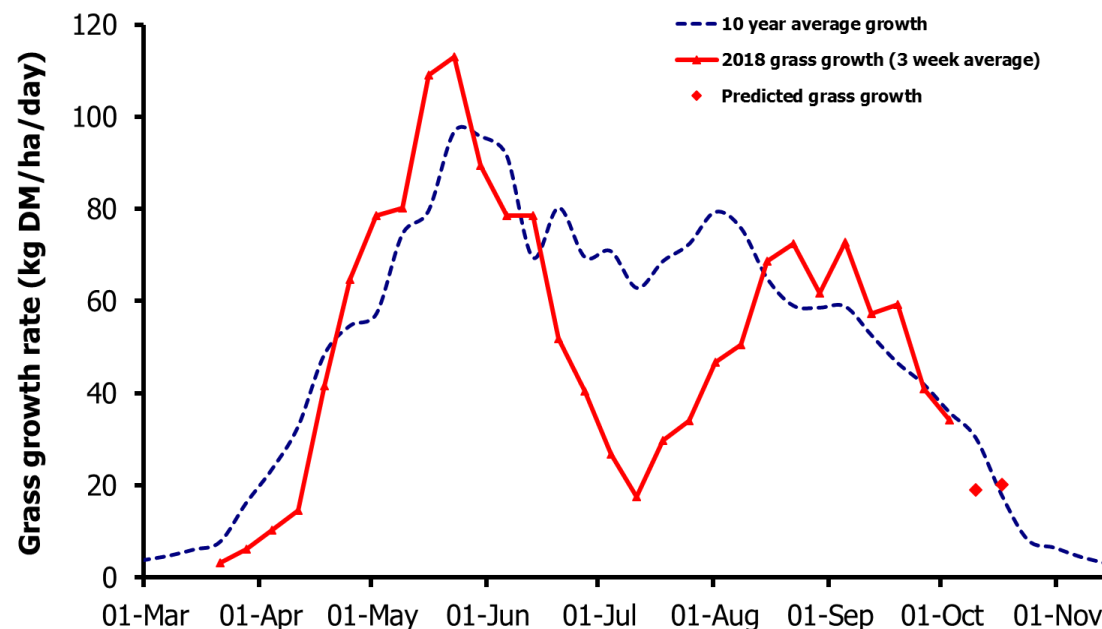
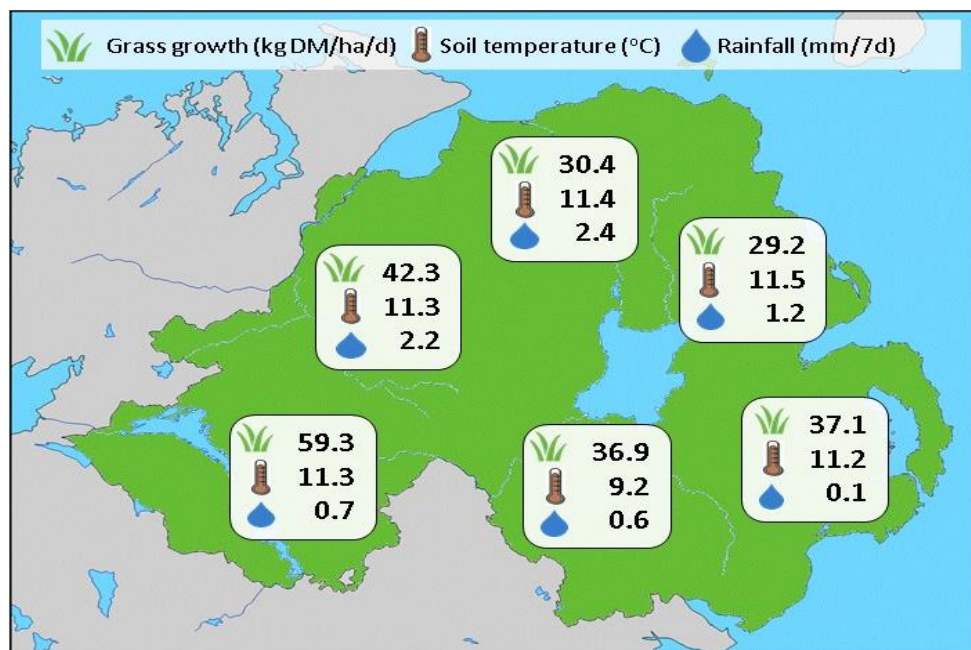


Week Beginning 1 October 2018



Weekly Grass Growth (kg DM/ha/day)		Grass Quality	
		Plots	On-farm
GrassCheck plots	34.2	DM (%)	14.9
Dairy farms*	36.9	ME (MJ/kg DM)	11.5
Beef & sheep farms*	40.4	CP (% DM)	21.9
Forecast	7 day	19.0	WSC (% DM)
	14 day	20.2	11.0
			9.1

MANAGEMENT NOTES:

- The welcome return of good growing conditions in early September resulted in a 12% increase in grass growth during the month, with GrassCheck plots yielding 1.6t DM/ha. Grass quality, however, has been lower with metabolisable energy content averaging 10.7MJ/kg DM vs. long-term average 11.4MJ/kg DM.
- Growth conditions are expected to decline this week as autumnal conditions take over and temperatures fall.
- Most farms will now be starting the last grazing rotation, aim to graze drier fields first to allow for good covers of grass next spring and earlier turnout on these areas.

*On-farm grass growth data supplied by AgriNet

GrassCheck plots receive 270 kgN/ha/year

