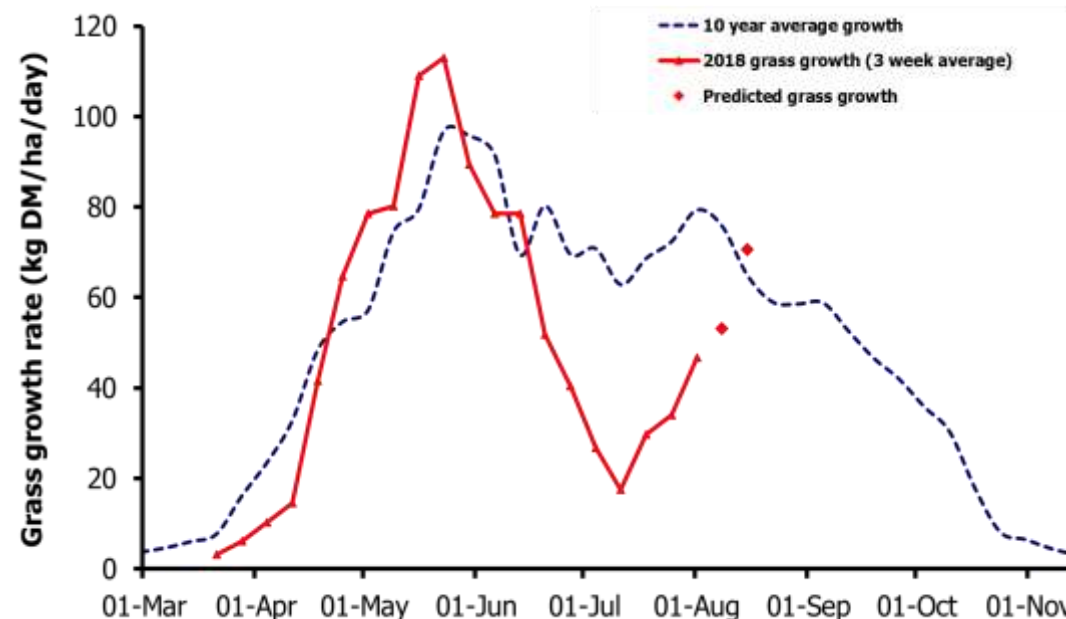
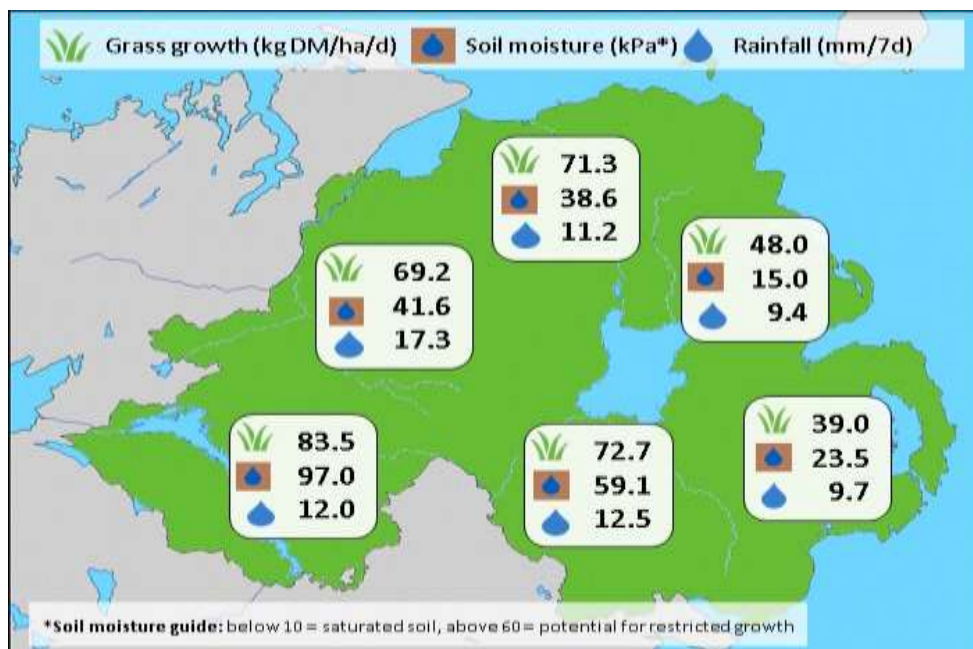


Week Beginning 6 August 2018



Weekly Grass Growth (kg DM/ha/day)		Grass Quality	
		Plots	On-farm
GrassCheck plots	46.7	DM (%)	15.0
Dairy farms*	58.5	ME (MJ/kg DM)	10.8
Beef & sheep farms*	55.5	CP (% DM)	20.6
Forecast	7 day	53.2	WSC (% DM)
	14 day	70.7	7.2
			8.3

MANAGEMENT NOTES:

- Recent rainfall has continued to increase grass growth with growth in the western counties close to average for this time of year.
- Average farm covers remain low in eastern areas and particularly on sheep farms which is leading to slower growth. Maintain a longer rotation to allow farm covers to increase to target levels of 2300kg DM/ha.
- On land that has not received fertiliser for some time, look for signs of nitrogen deficiency (yellow tips on leaves) and apply where necessary.
- A series of GrassCheck farm walks are scheduled to take place on 16, 21 and 29 August. Visit agrisearch.org for more details.

*On-farm grass growth data supplied by AgriNet

GrassCheck plots receive 270 kgN/ha/year

