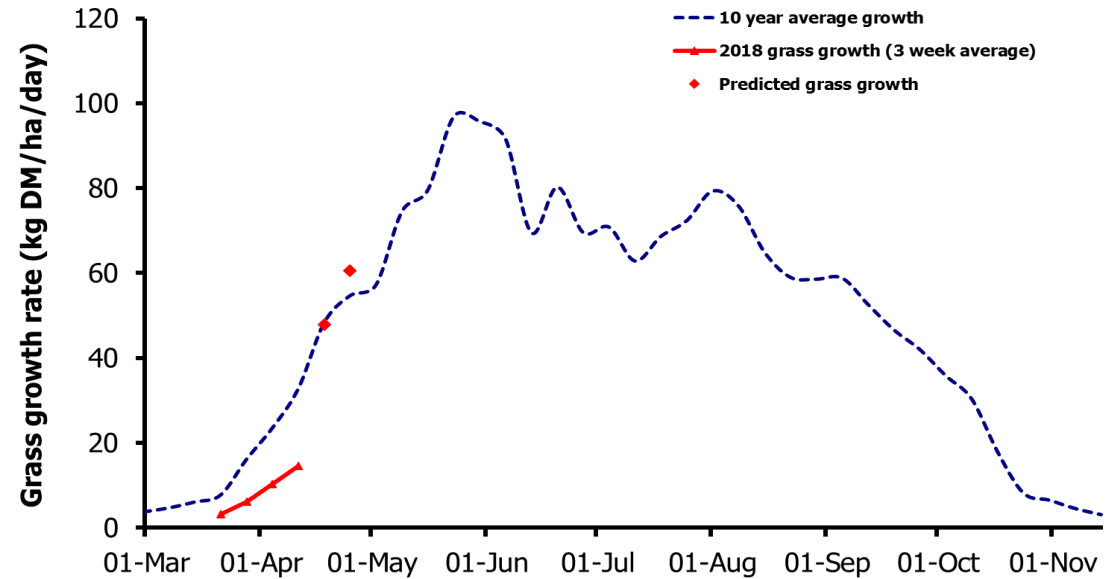
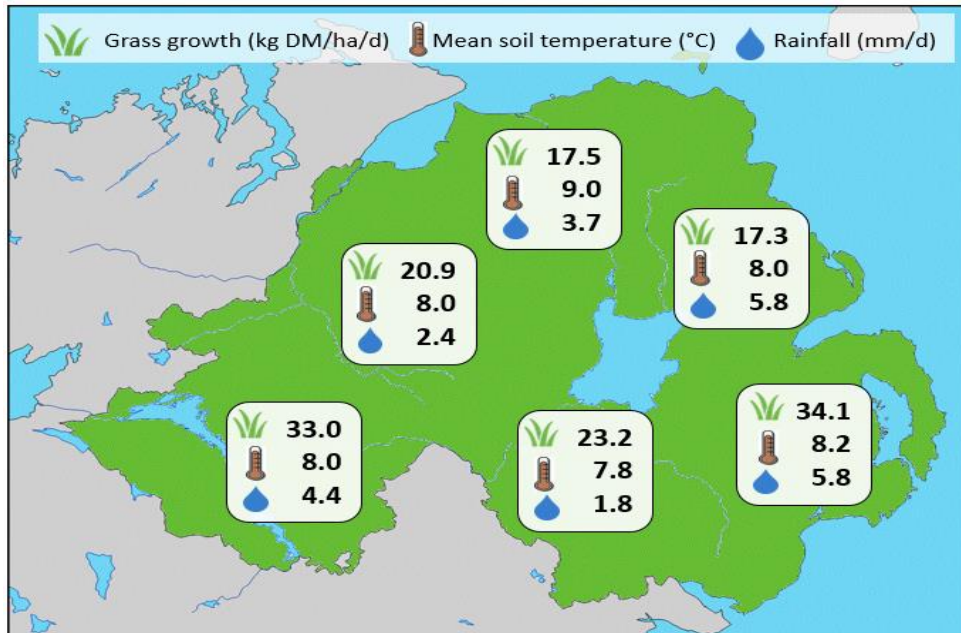


Week Beginning 16 April 2018



MANAGEMENT NOTES:

- Soil temperatures are now consistently above the 6°C threshold required for grass growth. This increase in temperatures mean growth is predicted to jump in the next two weeks, up to levels expected at this time of year.
- Ground conditions remain challenging for many however average covers on GrassCheck farms have increased to 2350kg DM/ha and quality remains high. With growth set to increase, take opportunities to measure and establish a grass wedge to help manage grass in the next few weeks.
- Where grazing conditions are difficult consider back-fencing, on-off grazing, turnout of lighter stock and targeting the lighter areas of the farm.
- For the latest grass and weather info visit agrisearch.org/GrassCheck

Weekly Grass Growth (kg DM/ha/day)		
GrassCheck plots	11.9	
Dairy farms*	27.0	
Beef & sheep farms*	28.2	
Forecast	7 day	47.8
	14 day	60.6

	Grass Quality	
	Plots	On-farm
DM (%)	17.9	19.9
ME (MJ/kg DM)	12.6	12.3
CP (% DM)	22.3	21.0
WSC (% DM)	14.9	16.8

*On-farm grass growth data supplied by AgriNet

GrassCheck plots receive 270 kgN/ha/year

