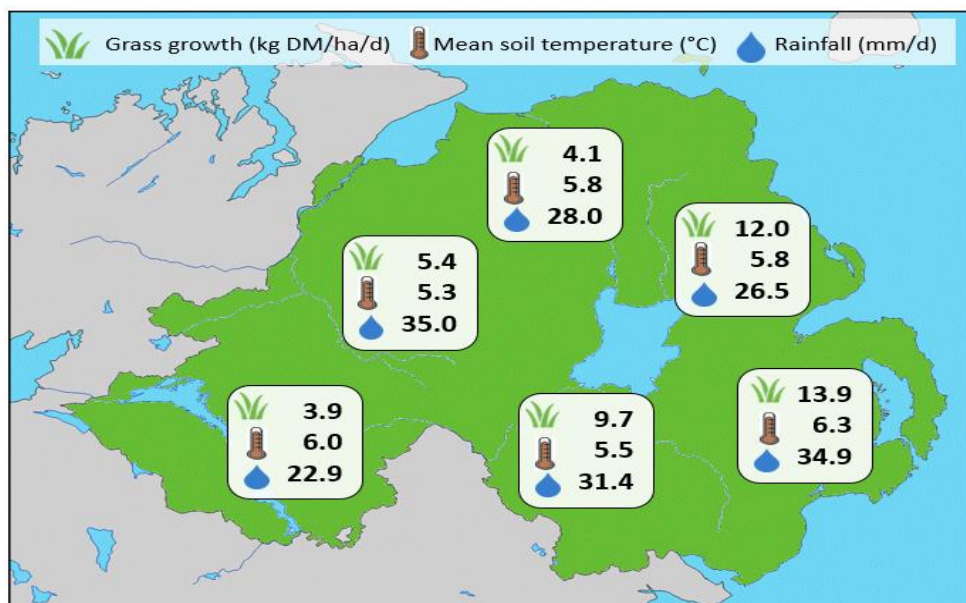
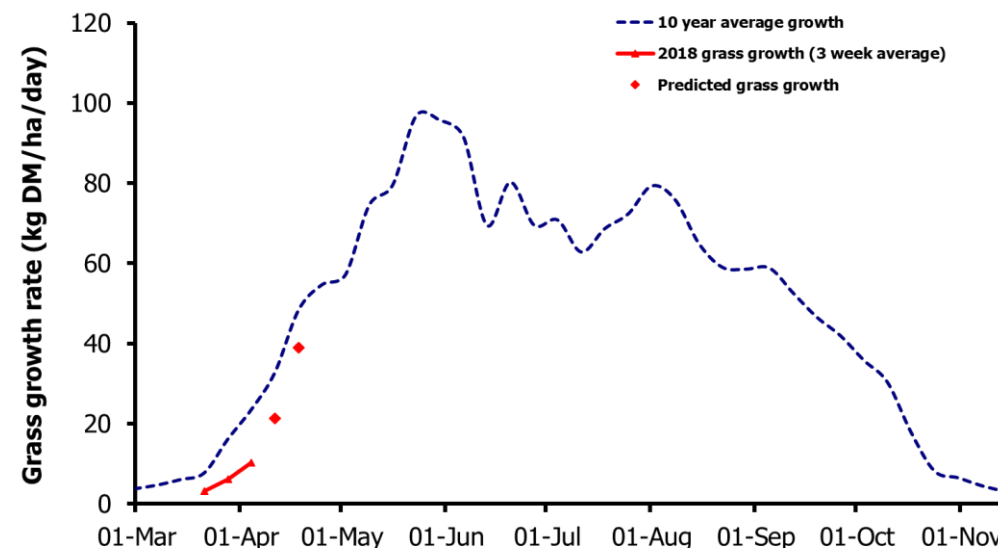


Week Beginning 9 April 2018



Weekly Grass Growth (kg DM/ha/day)		
GrassCheck plots	10.2	
Dairy farms*	10.4	
Beef & sheep farms*	8.1	
Forecast	7 day	21.3
	14 day	38.9

	Grass Quality	
	Plots	On-farm
DM (%)	17.3	21.5
ME (MJ/kg DM)	12.5	12.4
CP (% DM)	20.9	22.5
WSC (% DM)	16.7	15.6



MANAGEMENT NOTES:

- Temperatures have been higher than expected this past week giving a small lift in grass growth rates across both plots and farm. With conditions becoming milder, growth is expected to jump significantly in the next two weeks, climbing closer to the seasonal average for this time of year.
- However, many areas have received a lot of rain in the past week. Review ground conditions and where possible take opportunities to start to graze areas to stimulate spring growth.
- Aim to apply fertiliser to any fields which are yet to receive fertiliser this year.
- For the latest grass and weather info visit agrisearch.org/GrassCheck

*On-farm grass growth data supplied by AgriNet

GrassCheck plots receive 270 kgN/ha/year

