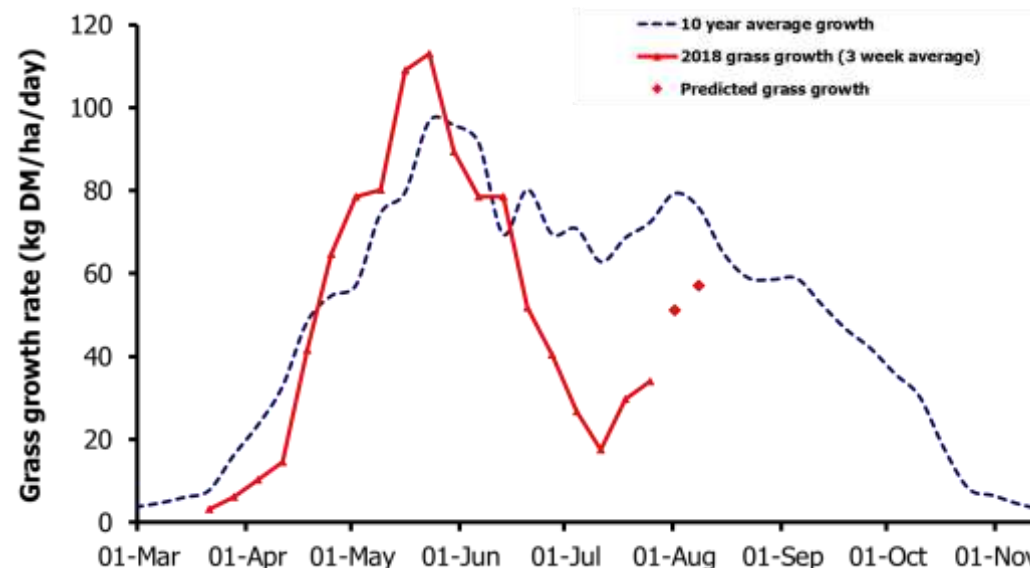
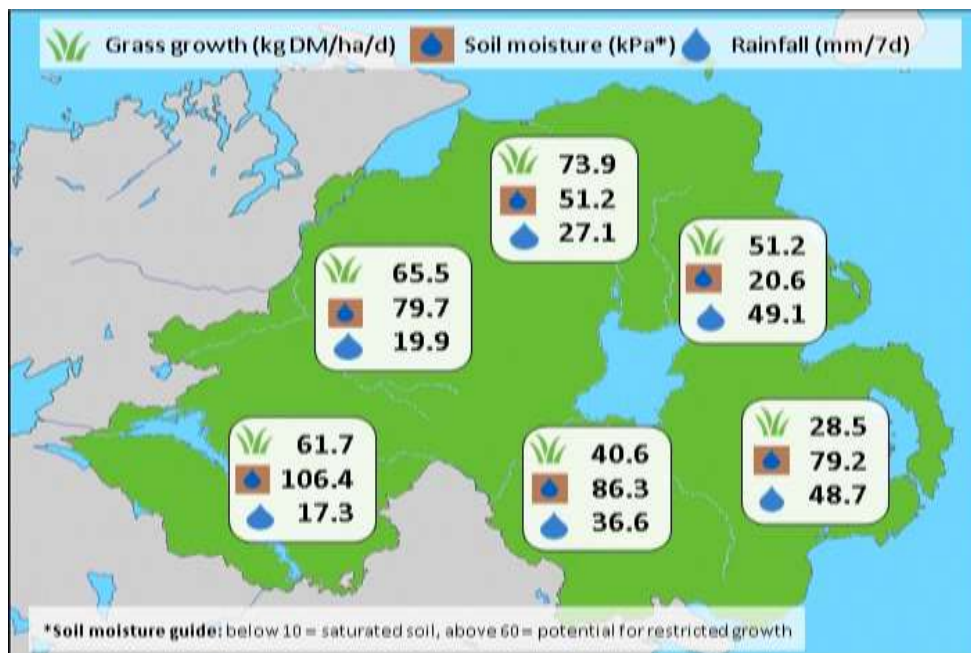


Week Beginning 30 July 2018



MANAGEMENT NOTES:

- July has seen a total growth of 0.98t DM/ha on the GrassCheck plots, only 44% of the long-term average. Growth this year to date is 2t DM/ha less for counties Down and Armagh (6.1t DM/ha) compared with the rest of N.I. (8.1t DM/ha).
- Although grass growth this past week has remained low in eastern parts (Hillsborough = 14kg DM/ha/d), the heavy rainfall in the past few days has allowed good rewetting of soils, supporting more positive grass growth forecasts of 51 and 57kg DM/ha/d for the next two weeks.
- Where growth has been severely restricted by drought, there should be sufficient soil N available to support 1-2t DM/ha grass growth without additional fertiliser, provided some N has been applied in the past four weeks.
- GrassCheck farm walks will be held 16 and 21 August, see agrisearch.org for info.

Weekly Grass Growth (kg DM/ha/day)		Grass Quality	
		Plots	On-farm
GrassCheck plots	34.1	DM (%)	24.4
Dairy farms*	58.8	ME (MJ/kg DM)	11.3
Beef & sheep farms*	47.3	CP (% DM)	18.6
Forecast	7 day	51.2	WSC (% DM)
	14 day	57.1	12.8
		9.7	

*On-farm grass growth data supplied by AgriNet

GrassCheck plots receive 270 kgN/ha/year

