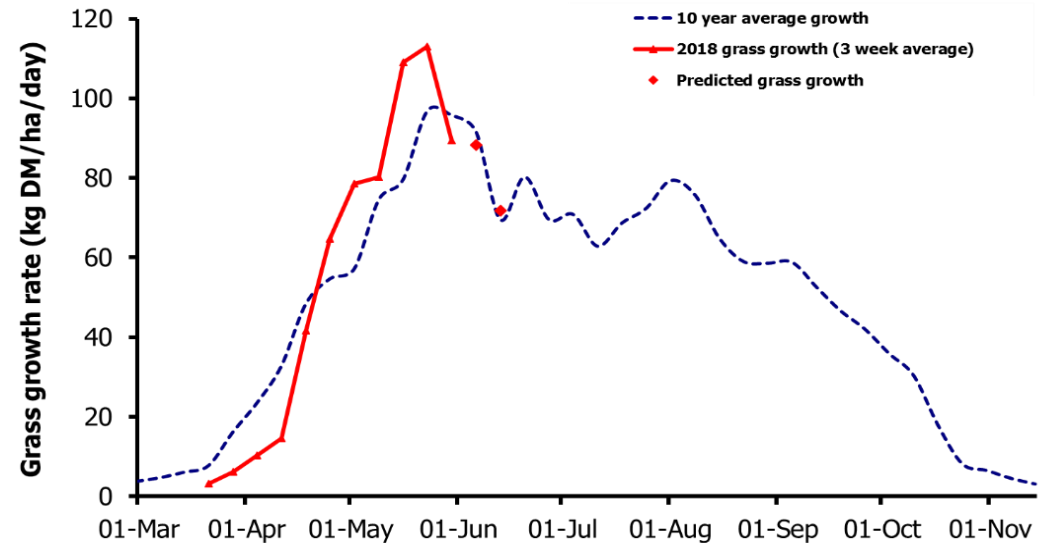
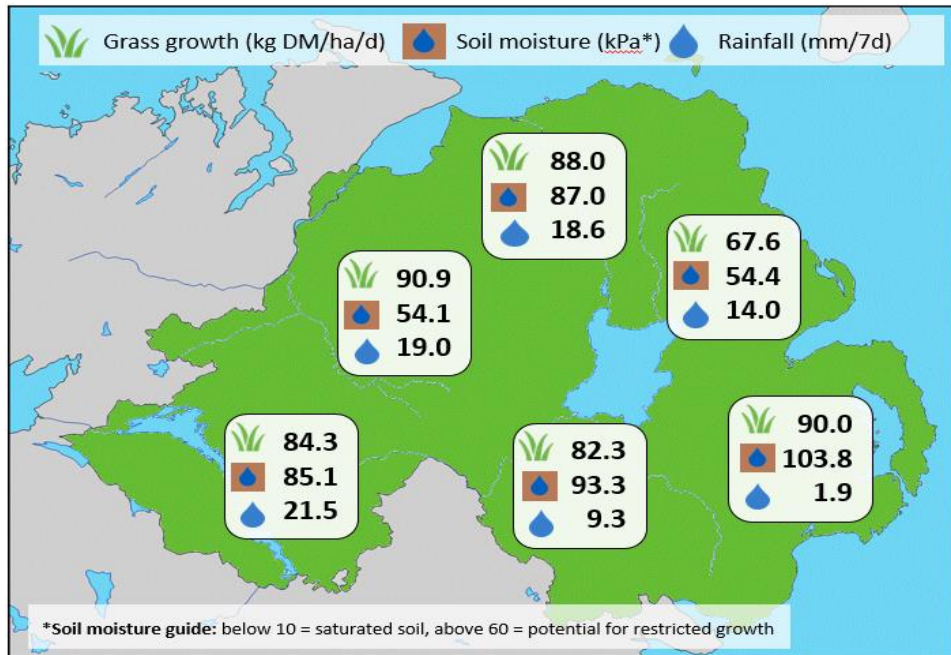


Week Beginning 4 June 2018



MANAGEMENT NOTES:

- Strong growth in the last two weeks of May resulted in a total spring yield of 4.4t DM/ha, a 5% increase on the long-term average. A slight reduction in temperatures and continued dry conditions means growth rates are expected to fall marginally in the next week.
- Grass quality is continuing to fall with many plants reaching heading. Pre-mowing, topping or taking paddocks out for silage will ensure good quality in the next rotation. Walk the farm and do a forage budget to identify potential for removing surplus grass.
- Where growth remains strong, responses of over 25kg DM of grass can be achieved from every 1kg of N fertiliser applied. Review fertiliser and slurry plans to make the most of this return.

Weekly Grass Growth (kg DM/ha/day)		Grass Quality	
		Plots	On-farm
GrassCheck plots	89.5	DM (%)	17.3
Dairy farms*	91.3	ME (MJ/kg DM)	11.6
Beef & sheep farms*	78.8	CP (% DM)	16.6
Forecast	7 day	88.3	WSC (% DM)
	14 day	71.7	15.6
			9.4

*On-farm grass growth data supplied by AgriNet

GrassCheck plots receive 270 kgN/ha/year

