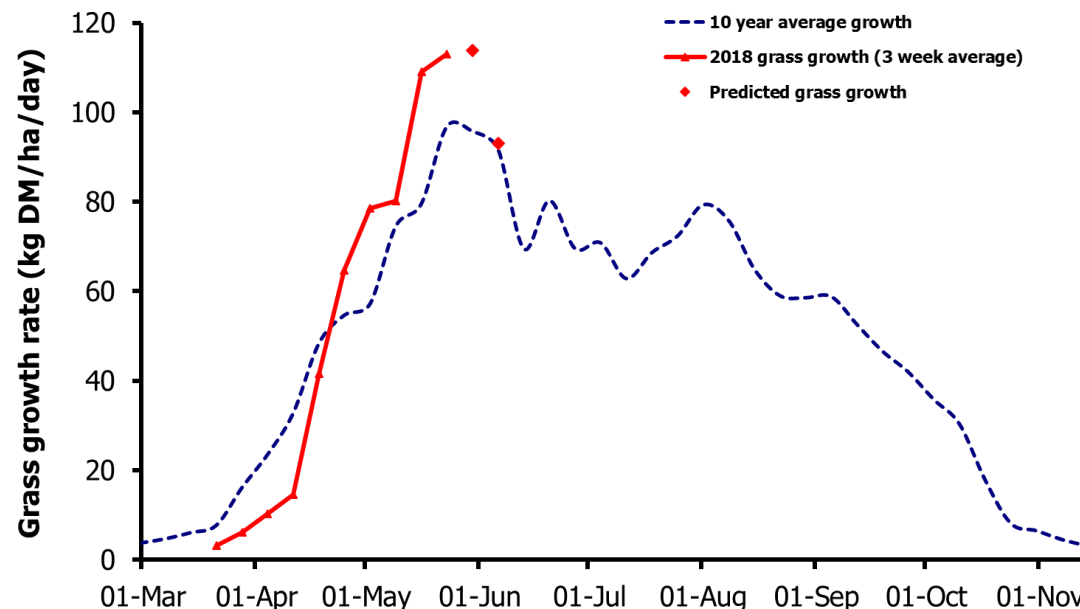
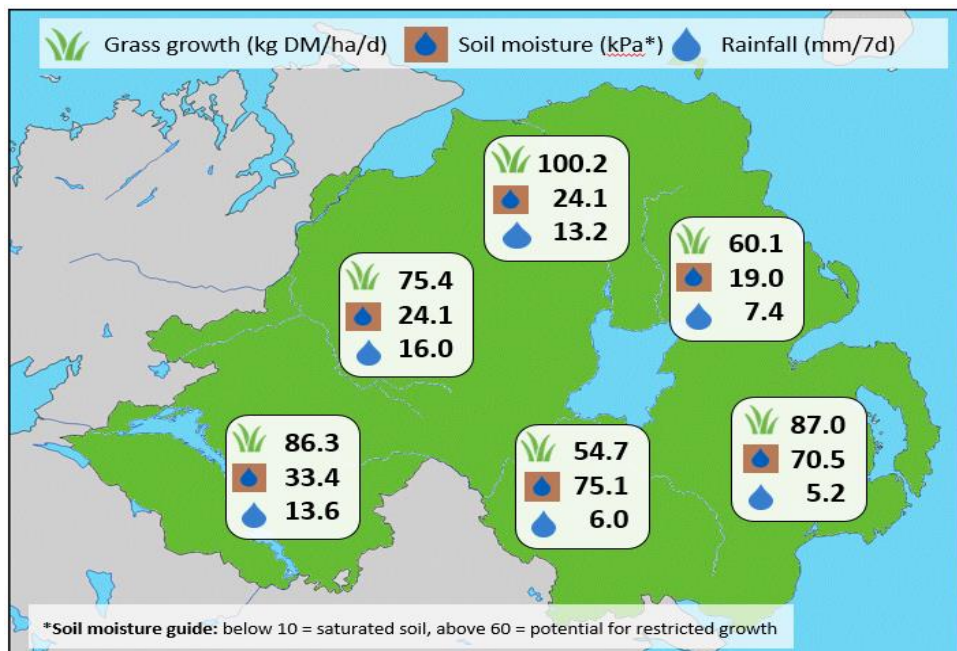


Week Beginning 28 May 2018



MANAGEMENT NOTES:

- Growth has remained strong again this week and with continued good weather forecast, total growth for May is expected to be above the long-term average of 2t DM/ha. With soil moistures falling in eastern counties it is likely that growth will start to be restricted in these areas.
- Grass quality has fallen with many plants now entering the reproductive phase and generating seed heads. Pre-mowing, topping or taking out paddocks for silage will help remove this fibrous material and ensure good quality at the next rotation.
- More information on GrassCheck will be available at the AFBI Dairy Open Day on 6 June 2018. Visit afbini.gov.uk/events for event details.

Weekly Grass Growth (kg DM/ha/day)		Grass Quality	
		Plots	On-farm
GrassCheck plots	113.1	DM (%)	17.8
Dairy farms*	80.4	ME (MJ/kg DM)	10.5
Beef & sheep farms*	74.8	CP (% DM)	15.2
Forecast	7 day	113.8	WSC (% DM)
	14 day	93.1	13.8
		17.1	11.6
		15.9	16.6

*On-farm grass growth data supplied by AgriNet

GrassCheck plots receive 270 kgN/ha/year

