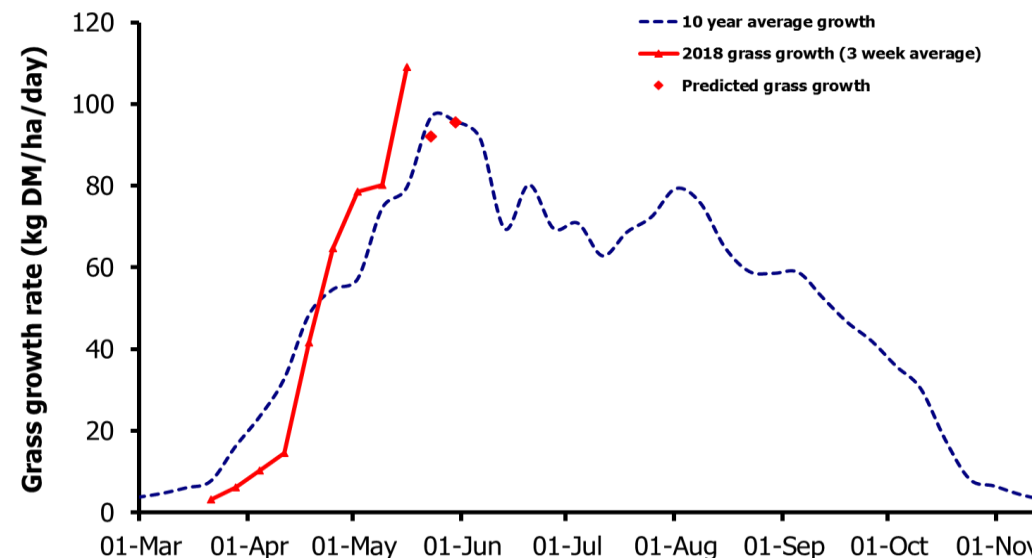
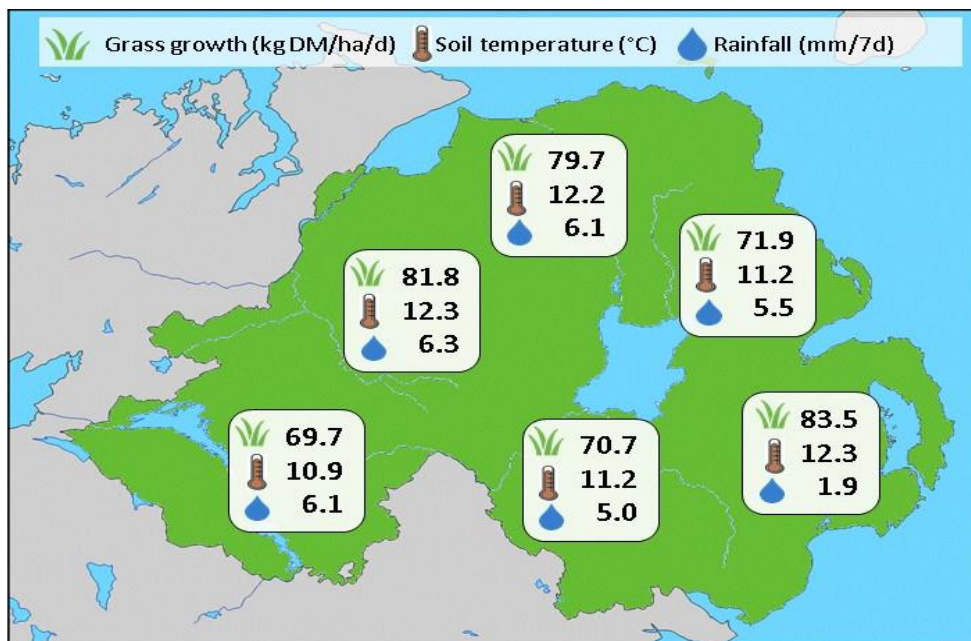


## Week Beginning 21 May 2018



Weekly Grass Growth (kg DM/ha/day)		Grass Quality	
		Plots	On-farm
GrassCheck plots	109.2	DM (%)	13.4
Dairy farms*	78.5	ME (MJ/kg DM)	11.3
Beef & sheep farms*	77.8	CP (% DM)	15.8
Forecast	7 day	92.0	WSC (% DM)
	14 day	95.6	14.7
			16.1

### MANAGEMENT NOTES:

- Grass growth and average farm covers have increased again this week with growth rate exceeding over 100kg DM/ha/day on a number of farms across the province. Good growth is expected to continue however drier farms may start to experience some reduction in growth as soil water deficits start to impact.
- Seed heads are beginning to appear in swards bringing significant drops in grass quality in both grazed and silage swards if they remain uncut. Use this opportunity to harvest silage and also take out heavy grazing covers to ensure good quality re-growth in the next rotation.
- More information on GrassCheck will be available at the AFBI Dairy Open Day on 6<sup>th</sup> June 2018. Visit [afbini.gov.uk/events](http://afbini.gov.uk/events) for event details.

\*On-farm grass growth data supplied by AgriNet

# GrassCheck plots receive 270 kgN/ha/year

