

INFORMATION
ANALYSIS
DIRECTORATE



Northern Ireland Waiting Time Statistics: Diagnostic Waiting Times Quarter Ending September 2015



Department of
**Health, Social Services
and Public Safety**

www.dhsspsni.gov.uk

Reader Information

Purpose	This publication presents information on waiting times for diagnostic services in Northern Ireland at 30 th September 2015 and diagnostic reporting times during the quarter ending 30 th September 2015. It details information on the number of patients waiting, and length of time waiting, for diagnostic services, as well as diagnostic reporting times at Health and Social Care (HSC) Trusts in Northern Ireland. This information reports on performance against the 2015/16 Ministerial diagnostic target which states that, from April 2015, no patient should wait longer than nine weeks for a diagnostic test and all urgent diagnostic tests should be reported on within 2 days of the test being undertaken. Data is presented by HSC Trust, diagnostic service and time band.
Authors	Jennifer Lynn, Jennifer McCrea, Ruth Fulton.
Publication Date	Thursday 26 th November 2015
Reporting Period	1 st July 2015 – 30 th September 2015
Publication Issue	20
Issued by	Hospital Information Branch Information & Analysis Directorate Department of Health, Social Services & Public Safety Stormont Estate Belfast, BT4 3SQ
Statistician	Jennifer Lynn (028) 905 22081
Email	jennifer.lynn@dhsspsni.gov.uk
Internet	https://www.dhsspsni.gov.uk/articles/diagnostic-waiting-times
Statistical Quality	Information contained in this release that has been sourced from HSC Trusts has been validated by the Department prior to release.
Target audience	DHSSPS, Chief Executives of the HSC Board and Trusts in Northern Ireland, health care professionals, academics, Health & Social Care stakeholders, the media and general public.
Further copies from	statistics@dhsspsni.gov.uk
Internet address	https://www.dhsspsni.gov.uk/topics/dhssps-statistics-and-research
Price	Free
Copyright	This publication is Crown copyright and may be reproduced free of charge in any format or medium. Any material used must be acknowledged, and the title of the publication specified.

Key Points

- At 30th September 2015, there were 90,643 patients waiting for a diagnostic service at HSC Trusts in Northern Ireland. This represents an increase of 1.1% (957) compared with the end of June 2015 and an increase of 24.2% (17,668) compared to the end of September 2014 (Figure 1 & Table 1a).
- Of the 90,643 patients waiting, 50.9% (46,135) were waiting for an Imaging Service, 29.3% (26,532) were waiting for a Physiological Measurement test and 19.8% (17,976) were waiting for a Day Case Endoscopy (Figure 2 & Table 1b).
- Of the 90,643 patients waiting for a diagnostic service, approximately 1 in 5 were waiting for a Non-obstetric Ultrasound (18,721, 20.7%) (Figure 3 & Table 3).
- There were 31,607 (34.9%) patients waiting longer than 9 weeks for a diagnostic service at the end of September 2015, an increase of 1,546 (5.1%) on the corresponding number at the end of the previous quarter (30,061), and 14,366 more than on 30th September 2014 (17,241) (Figure 6 & Tables 2, 3 & 4).
- There were 135,961 completed diagnostic reports verified and dispatched to the referring clinician in Northern Ireland during the quarter ending September 2015, an increase of 1.1% (1,529) on the 134,432 reported in the previous quarter, and a decrease of 1.1% (1,481) on the same quarter last year (137,442) (Figure 11 & Table 5).
- In Northern Ireland as a whole, 89.2% of all urgent diagnostic tests were reported on within 2 days in the quarter ending September 2015, compared to 89.1% in the previous quarter and 91.6% for the same quarter last year (Figure 16 & Tables 10 & 11).
- During the quarter ending September 2015, 94.4% of routine diagnostic tests were reported on within 2 weeks and 98.4% were reported on within 4 weeks (Figure 16 & Tables 10 & 11).

Contents

About Hospital Information Branch.....	5
List of Figures.....	6
List of Tables.....	7
Technical Notes.....	8
Introduction.....	10
Waiting Times for Diagnostic Services.....	10
Diagnostic Reporting Times.....	16
Tables.....	21
Appendix 1: Explanatory Notes.....	26

Hospital Information Branch (HIB)

Hospital Information Branch is responsible for the collection, quality assurance, analysis and publication of timely and accurate information derived from a wide range of statistical information returns supplied by the Health & Social Care (HSC) Trusts and the HSC Board. Statistical information is collected routinely from a variety of electronic patient level administrative systems and pre-defined EXCEL survey return templates.

The Branch aims to present information in a meaningful way and provide advice on its uses to customers in the HSC Committee, Professional Advisory Groups, policy branches within the DHSSPS, other Health organisations, academia, private sector organisations, charity/voluntary organisations as well as the general public. The statistical information collected is used to contribute to major exercises such as reporting on the performance of the HSC system, other comparative performance exercises, target setting and monitoring, development of service frameworks as well as policy formulation and evaluation. In addition, the information is used in response to a significantly high volume of Parliamentary/Assembly questions and ad-hoc queries each year.

Information is disseminated through a number of key statistical publications, including: Inpatient Activity, Outpatient Activity, Emergency Care, Mental Health & Learning Disability and Waiting Time Statistics (Inpatient, Outpatient, Diagnostics and Cancer). A detailed list of these publications is available from:

Website: <https://www.dhsspsni.gov.uk/topics/dhssps-statistics-and-research>

List of Figures

Figure 1:	Total number of patients waiting: Quarterly trends 30 th September 2013 to 30 th September 2015.....	10
Figure 2:	Total number of patients waiting by category of service: Quarterly trends 30 th September 2014 to 30 th September 2015.....	11
Figure 3:	Total number of patients waiting by diagnostic service at 30 th September 2015.....	12
Figure 4:	Total number of patients waiting by HSC Trust at 30 th September 2015.....	12
Figure 5:	HSC Trust performance against the 2015/16 waiting time target for diagnostic tests.....	13
Figure 6:	Number of patients waiting longer than 9 weeks: Quarterly trends 30 th September 2013 to 30 th September 2015.....	13
Figure 7:	Number of patients waiting longer than 9 weeks by diagnostic service at 30 th September 2015.....	14
Figure 8:	Number of patients waiting longer than 9 weeks by HSC Trust at 30 th September 2015.....	14
Figure 9:	Proportion of patients waiting longer than 9 weeks: Quarterly trends 30 th September 2013 to 30 th September 2015.....	15
Figure 10:	Proportion of patients waiting longer than 9 weeks in each HSC Trust at 30 th September 2015.....	15
Figure 11:	Number of completed diagnostic reports by priority: Quarterly trends QE September 2014 – QE September 2015.....	16
Figure 12:	Number of completed diagnostic reports by category and priority during QE September 2015.....	17
Figure 13:	Number of completed diagnostic reports by HSC Trust and priority during QE September 2015.....	17
Figure 14:	HSC Trust performance against the 2015/16 reporting time target.....	18
Figure 15:	Percentage of diagnostic tests reported within 2 days/2 weeks/4weeks: Quarterly trends QE September 2014 - QE September 2015.....	18
Figure 16:	Percentage of diagnostic tests reported within 2 days/2 weeks/4 weeks by HSC Trust during QE September 2015.....	19

List of Tables

Table 1a:	Number of patients waiting for a diagnostic service – 30 th September 2015.....	21
Table 1b:	Number of patients waiting for a diagnostic service by category – 30 th September 2015.....	21
Table 2:	Number of patients waiting longer than 9 weeks for a diagnostic service – 30 th September 2015.....	21
Table 3:	Number of patients waiting for a diagnostic service, by type of service and weeks waiting – 30 th September 2015.....	22
Table 4:	Number of patients waiting for a diagnostic service, by HSC Trust - 30 th September 2015.....	23
Table 5:	Number of completed diagnostic reports by priority – QE September 2015.....	23
Table 6:	Number of completed urgent diagnostic reports by category – QE September 2015.....	23
Table 7:	Number of completed routine diagnostic reports by category – QE September 2015.....	24
Table 8:	Number of completed urgent diagnostic reports by HSC Trust and time in days – QE September 2015.....	24
Table 9:	Number of completed routine diagnostic reports by HSC Trust and time in weeks – QE September 2015.....	24
Table 10:	Percentage of completed reports achieved – QE September 2015.....	25
Table 11:	Diagnostic reporting time performance (across all HSC Trusts in Northern Ireland) – QE September 2015.....	25

Technical Notes

This statistics release is part of a quarterly data series presenting information on waiting times and reporting times for diagnostic services at HSC Trusts in Northern Ireland.

Data Collection

The information presented in this bulletin derives from a series of statistical returns (listed below) provided by HSC Trusts and the HSC Board.

Statutory Data Return 1 (SDR1), Parts 1 and 2, and Diagnostic Reporting Turnaround Time Return (DRTT)

Data providers are supplied with technical guidance documents outlining the methodologies that should be used in the collection, reporting and validation of each of these data returns. These documents can be accessed at the following link:

<https://www.dhsspsni.gov.uk/articles/diagnostic-waiting-times>

Rounding

Percentages have been rounded to one decimal place and, as a consequence, some percentages may not sum to 100.

On occasion, the percentage of patients waiting within overall totals or percentage changes between quarters, are presented. In some instances, these percentages are less than 0.1% or more than 99.9%. Users should be aware that in such cases, the percentage is rounded to zero or 100%.

Data Quality

Information provided by HSC Trusts on the SDR1 Part 1 return has been validated and quality assured by HSC Trusts prior to publication. HSC Trusts are given a set period of time to submit the information to HIB. Following submission, HIB perform a series of checks to verify that information is consistent both within and across returns. Trend analyses are used to monitor annual variations and emerging trends. Queries arising from validation checks are presented to HSC Trusts for clarification and if required, returns may be amended and/or re-submitted.

The information contained within this publication is currently under review. The Department is looking at how information on diagnostic waiting and reporting times is sourced and the validation procedures that are carried out. All quality issues identified as part of this review are being addressed on an ongoing basis.

The information contained within this publication are not currently National Statistics.

Main Uses of Data

Data contained in this release are published primarily to provide an indication of HSC performance. They allow the general public and the DHSSPS Health Committee to assess the performance of the DHSSPS, the HSC Board and HSC Trusts in providing timely access to hospital services in Northern Ireland. These data also provide policy makers with the necessary information to formulate and evaluate health services and are helpful in assessing the effectiveness of resource allocation in providing services that are fully responsive to patient needs. Additionally, hospital waiting time information is used to inform the media, special interest groups and academics, and by the DHSSPS to respond to parliamentary/assembly questions and ad hoc queries from the public.

An additional aim of this publication is to make waiting times information publicly available to those people using health services in Northern Ireland.

Waiting Time Information Elsewhere in the United Kingdom

While it is our intention to direct users to waiting time information elsewhere in the UK, users should be aware that hospital waiting times in other administrations are not always measured in a comparable manner to those in Northern Ireland. Details of the hospital waiting times published elsewhere in the UK can be found as detailed below.

England

<http://www.england.nhs.uk/statistics/statistical-work-areas/diagnostics-waiting-times-and-activity/>

Scotland

<http://www.isdscotland.org/Health-Topics/Waiting-Times/Publications/>

Wales

<http://wales.gov.uk/statistics-and-research/nhs-diagnostic-therapy-service-waiting-times/?lang=en>

Contact Information

As we want to engage with users of our statistics, we invite you to feedback your comments on this publication to:

Jennifer Lynn

Email: jennifer.lynn@dhsspsni.gov.uk

Tel: (028) 905 22081

Introduction

The information detailed in this release is published primarily to provide an indication of HSC Trust performance. It allows the general public and the DHSSPS Health Committee to assess the performance of the DHSSPS, the HSC Board and HSC Trusts in providing timely access to hospital services in Northern Ireland.

Data contained in this publication relates to waiting times for diagnostic services and the diagnostic reporting turnaround times at HSC Trusts in Northern Ireland at 30th September 2015 and during the quarter ending (QE) September 2015, respectively.

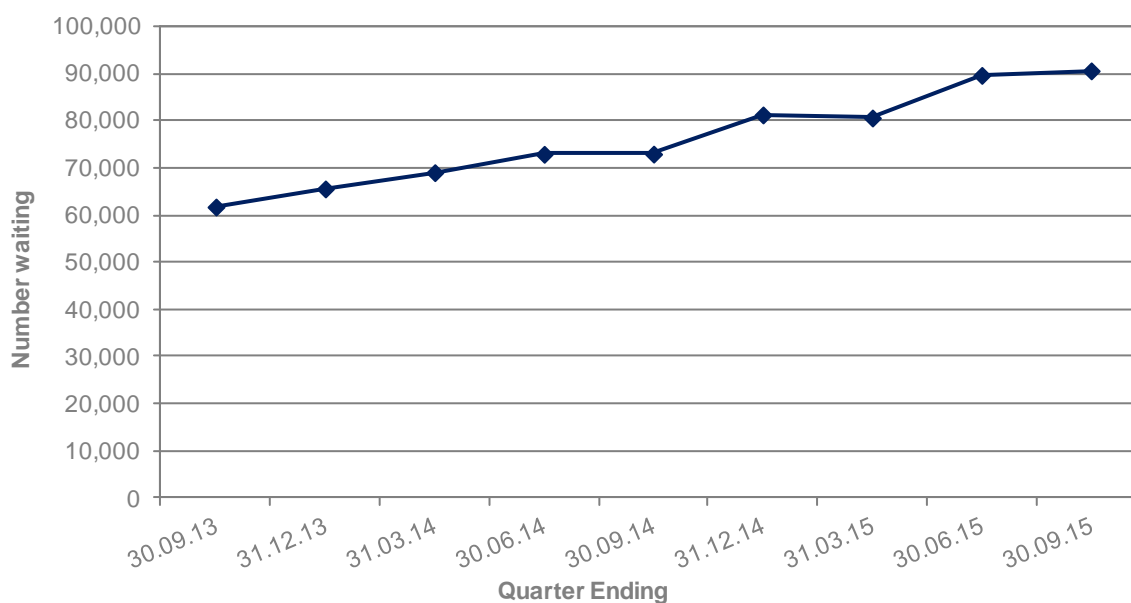
Waiting Times for Diagnostic Services

A diagnostic service provides an examination, test or procedure used to identify a person's disease or condition and which allows a medical diagnosis to be made.

Total patients waiting¹

The number of patients waiting for a diagnostic service at hospitals in Northern Ireland at 30th September 2015 was 90,643. This represents an increase of 957 (1.1%) on the number waiting at 30th June 2015 (89,686) and 17,668 (24.2%) more than at 30th September 2014 (72,975) (Figure 1 & Table 1a).

Figure 1: Total number of patients waiting: Quarterly trends 30th September 2013 to 30th September 2015

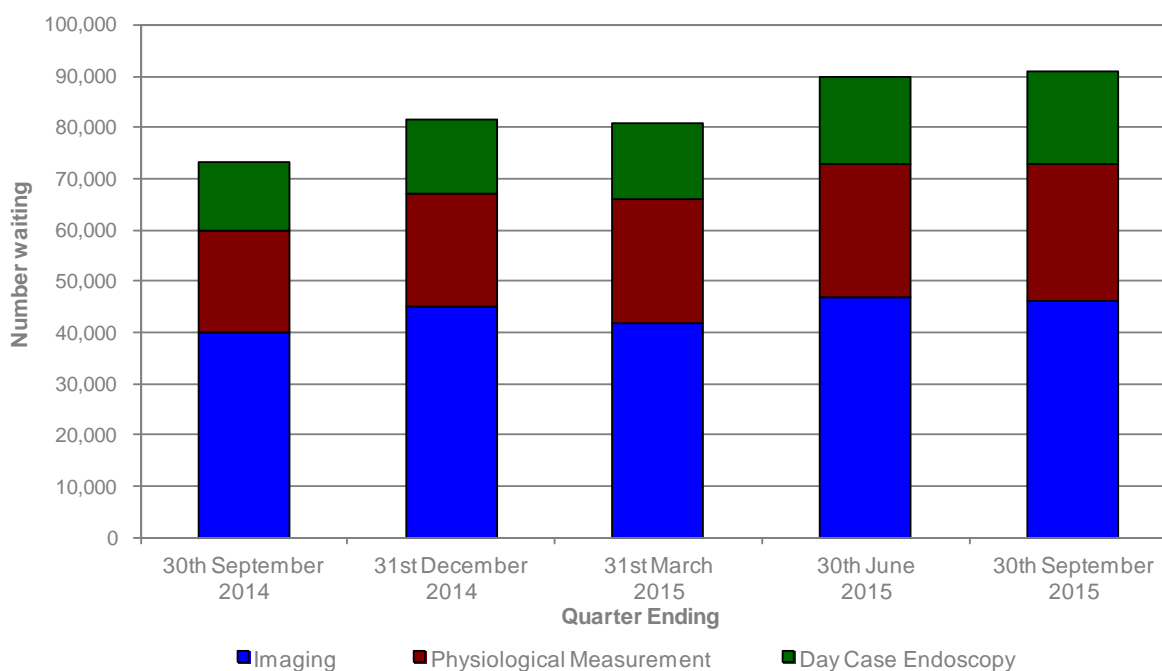


¹ Refer to Explanatory Notes 1-10 & 18

Total patients waiting by Diagnostic category¹

Of the 90,643 patients waiting, 50.9% (46,135) were waiting for an Imaging Service, 29.3% (26,532) were waiting for a Physiological Measurement test and 19.8% (17,976) were waiting for a Day Case Endoscopy (Figure 2 & Table 1b).

Figure 2: Total number of patients waiting by category of service: Quarterly trends
30th September 2014 to 30th September 2015



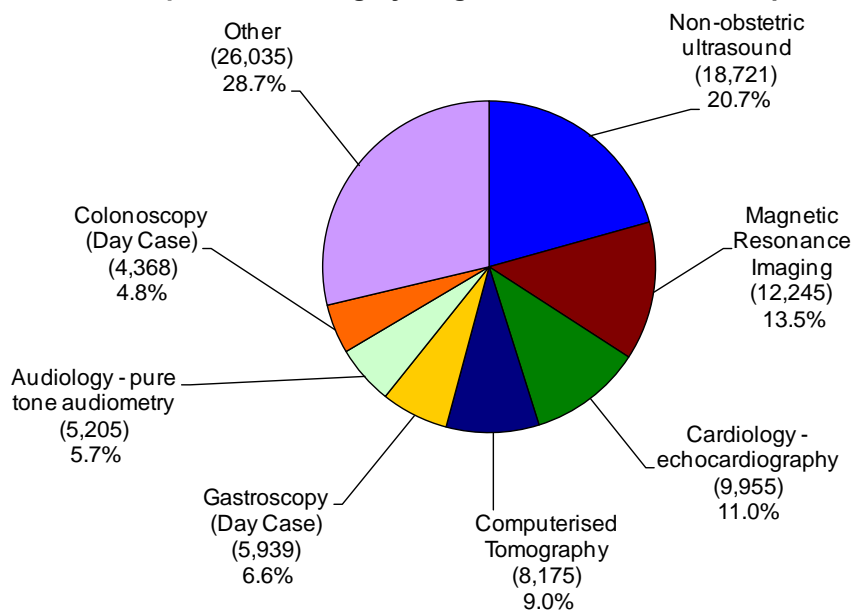
Total patients waiting by Diagnostic service²

Almost three-quarters (71.3%, 64,608) of the 90,643 patients waiting for a diagnostic service were within one of the following seven diagnostic services: Non-obstetric Ultrasound; Magnetic Resonance Imaging; Echocardiography; Computerised Tomography; Gastroscopy (Day Case); Pure Tone Audiometry and Colonoscopy (Day Case) (Figure 3 & Table 3).

¹ Refer to Explanatory Notes 1-10 & 18

² Refer to Explanatory Notes 1-11 & 18

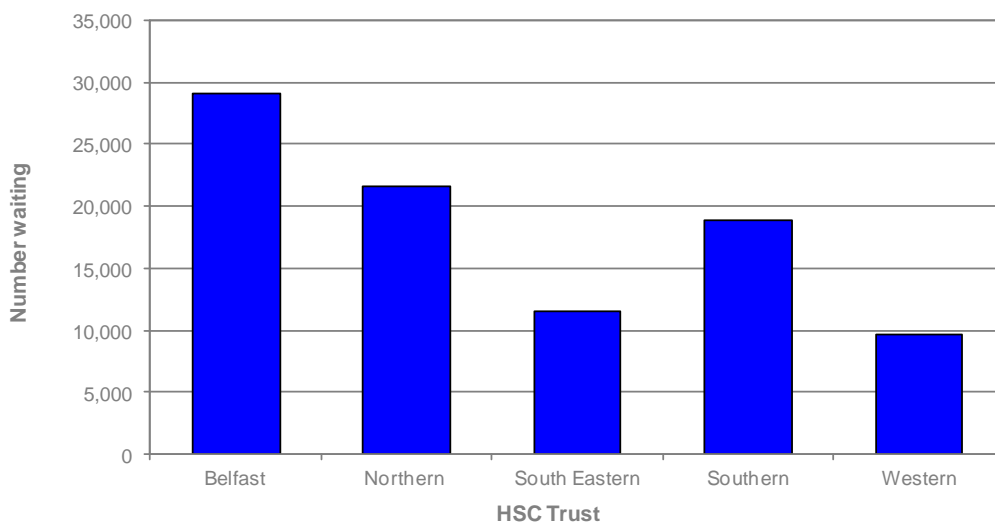
Figure 3: Total number of patients waiting by diagnostic service at 30th September 2015



Total patients waiting by HSC Trust²

Just under a third (32.1%, 29,052) of patients waiting for a diagnostic service were waiting in the Belfast HSC Trust. A further 23.8% (21,581) were waiting in the Northern HSC Trust, 20.7% (18,806) in the Southern HSC Trust, 12.8% (11,565) in the South Eastern HSC Trust and 10.6% (9,639) in the Western HSC Trust (Figure 4 & Table 4).

Figure 4: Total number of patients waiting by HSC Trust at 30th September 2015



Data users should be aware that many diagnostic services are not provided at each of the five HSC Trusts in Northern Ireland. In this situation, patients from one HSC Trust area will be waiting to be seen at a service provided at another HSC Trust. It is therefore not possible to accurately calculate the number of patients waiting per head of the population in any specific HSC Trust area, as HSC Trusts that provide services for the whole of Northern Ireland will have a higher number of patients waiting per head of the population, than those that provide more localised services.

² Refer to Explanatory Notes 1-11 & 18

Performance against the 2015/16 maximum waiting time target³

The 2015/16 Ministerial diagnostic waiting time target states that, from April 2015, no patient should wait longer than nine weeks for a diagnostic test.

Figure 5: HSC Trust performance against the 2015/16 waiting time target for diagnostic tests

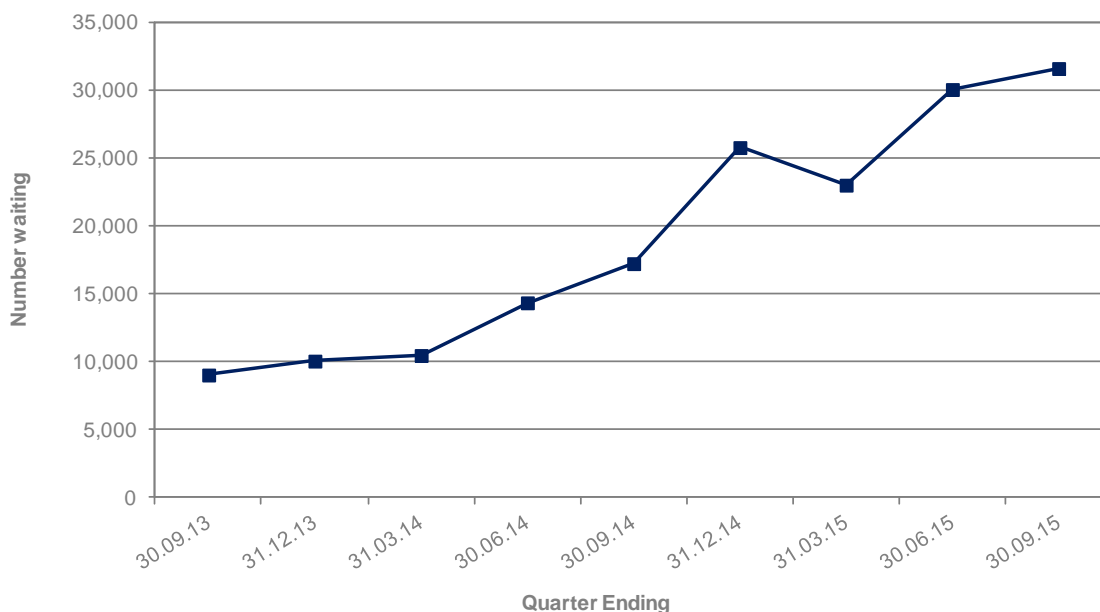
HSC Trust	Target Achieved?
	No patient waiting longer than nine weeks
Belfast	No
Northern	No
South Eastern	No
Southern	No
Western	No
Northern Ireland	No

Number of patients waiting longer than the 2015/16 maximum waiting time target

At the end of September 2015, Northern Ireland did not meet this target, nor did any of the individual Trusts (Table 4 & Figure 5).

At 30th September 2015, there were 31,607 (34.9%) patients waiting longer than 9 weeks for a diagnostic test. This represents an increase of 1,546 (5.1%) on 30th June 2015 (30,061), and almost twice the number waiting (14,366 more) than at 30th September 2014 (17,241) (Figure 6 & Table 2).

Figure 6: Number of patients waiting longer than 9 weeks: Quarterly trends 30th September 2013 to 30th September 2015

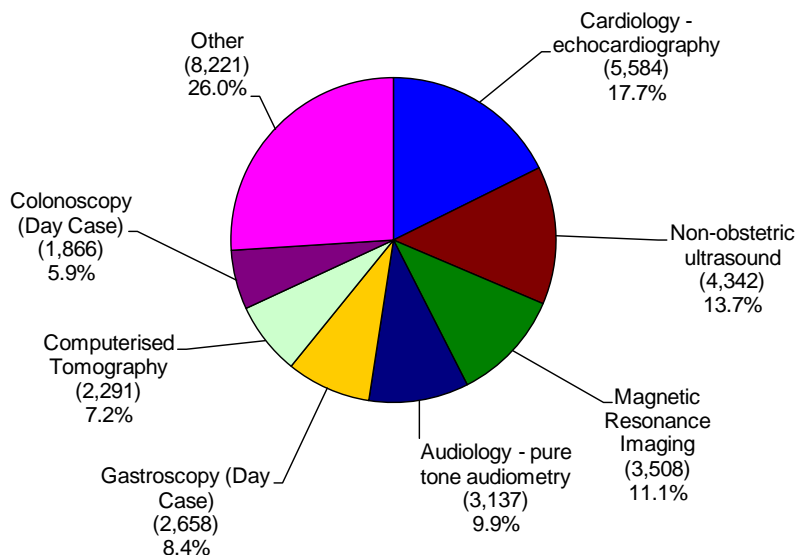


³ Refer to Explanatory Notes 1-12, 16 & 18

Patients waiting longer than the 2015/16 maximum waiting time target by Diagnostic service³

Almost three-quarters (74.0%, 23,386) of the 31,607 patients waiting more than 9 weeks were waiting for one of the following seven diagnostic services: Echocardiography; Non-obstetric Ultrasound; Magnetic Resonance Imaging; Pure Tone Audiometry; Gastroscopy (Day Case); Computerised Tomography and Colonoscopy (Day Case) (Figure 7 & Table 3).

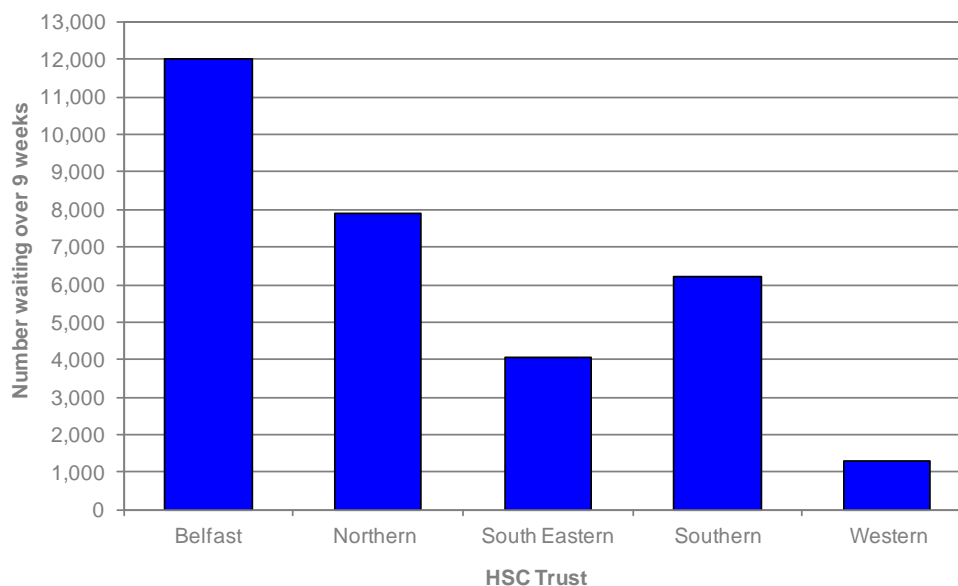
Figure 7: Number of patients waiting longer than 9 weeks by diagnostic service at 30th September 2015



Patients waiting longer than the 2015/16 maximum waiting time target by HSC Trust³

Of the 31,607 patients waiting longer than 9 weeks for a diagnostic service, 38.1% (12,053) were waiting in the Belfast HSC Trust, 25.1% (7,925) in the Northern HSC Trust, 19.7% (6,237) in the Southern HSC Trust, 12.9% (4,084) in the South Eastern HSC Trust, and 4.1% (1,308) in the Western HSC Trust (Figure 8 & Table 4).

Figure 8: Number of patients waiting longer than 9 weeks by HSC Trust at 30th September 2015

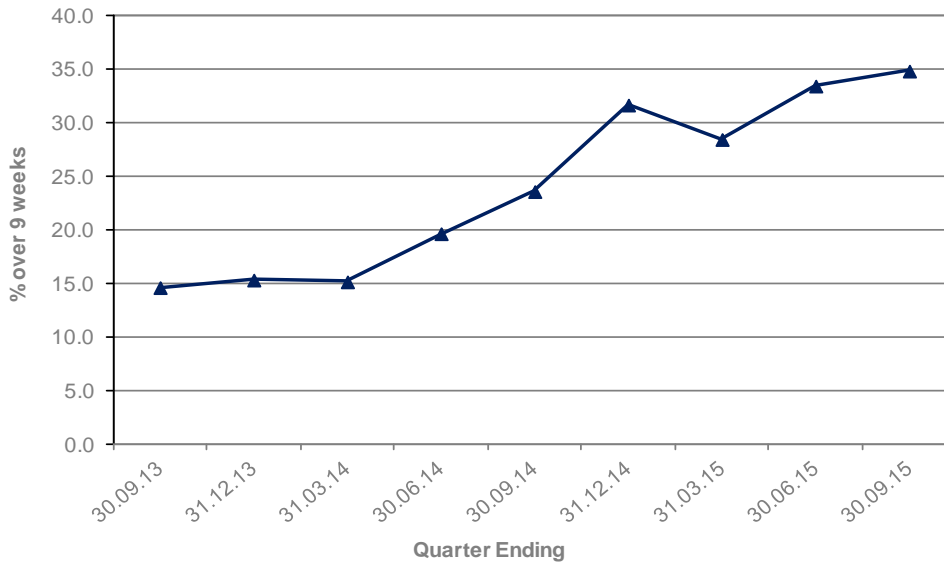


³ Refer to Explanatory Notes 1-12, 16 & 18

Proportion of patients waiting longer than the 2015/16 maximum waiting time target³

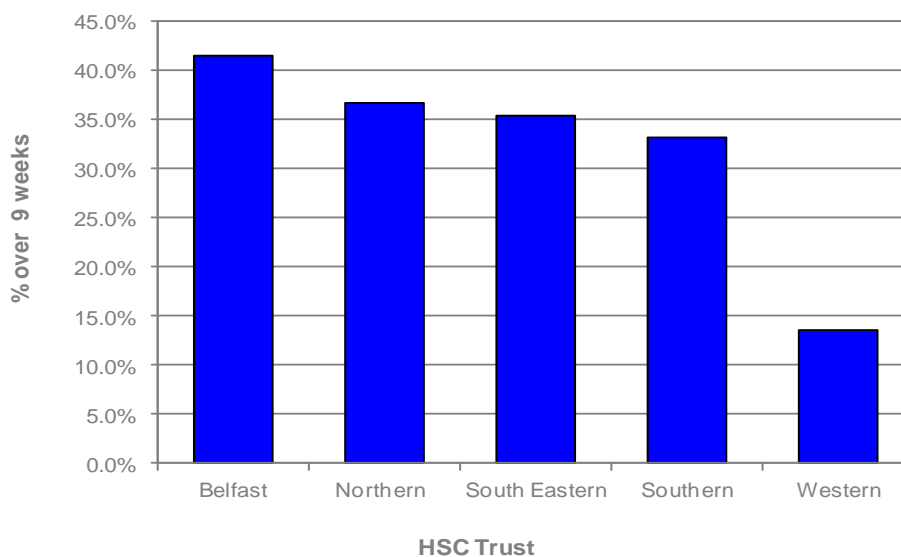
At the end of September 2015, 34.9% (31,607) of patients were waiting more than 9 weeks for a diagnostic service, compared with 33.5% (30,061) at the end of June 2015 and 23.6% (17,241) at the end of September 2014 (Figure 9 & Tables 1a & 2).

Figure 9: Proportion of patients waiting longer than 9 weeks: Quarterly trends 30th September 2013 to 30th September 2015



At 30th September 2015, 41.5% (12,053 out of 29,052) of patients in the Belfast HSC Trust were waiting longer than 9 weeks for a diagnostic service. The comparable proportion in the Northern HSC Trust was 36.7% (7,925 out of 21,581), with 35.3% (4,084 out of 11,565) in the South Eastern HSC Trust, 33.2% (6,237 out of 18,806) in the Southern HSC Trust and 13.6% (1,308 out of 9,639) in the Western HSC Trust (Figure 10 & Table 4).

Figure 10: Proportion of patients waiting longer than 9 weeks in each HSC Trust at 30th September 2015



³ Refer to Explanatory Notes 1-12, 16 & 18

Diagnostic Reporting Times

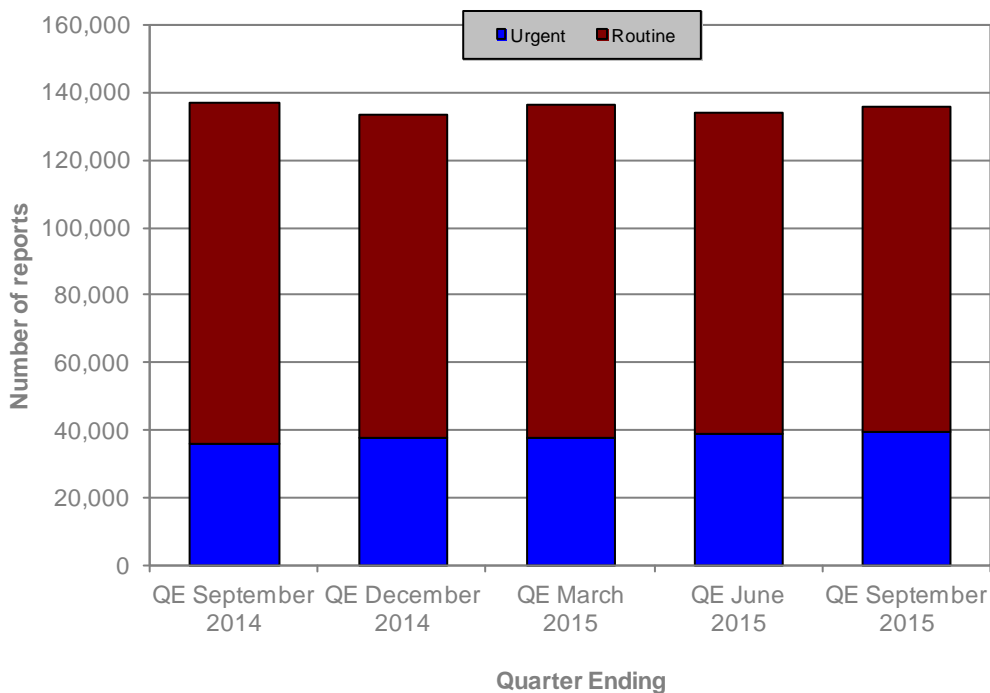
The diagnostic reporting turnaround time is the length of time between the diagnostic test being undertaken and the results being verified and dispatched to the referring clinician in Northern Ireland.

Diagnostic reporting turnaround times relate only to a selected subset of Imaging and Physiological Measurement tests (See explanatory note 14). Day case endoscopies are reported on the day of the test and as such are not included.

Total completed diagnostic reports⁴

A total of 135,961 diagnostic reports were verified and dispatched to the referring clinician in Northern Ireland during the quarter ending September 2015. This represents an increase of 1,529 (1.1%) on the number of completed reports during the quarter ending June 2015 (134,432), and a decrease of 1,481 (1.1%) on the number completed during the quarter ending September 2014 (137,442) (Figure 11 & Table 5).

Figure 11: Number of completed diagnostic reports by priority: Quarterly trends QE September 2014 – QE September 2015

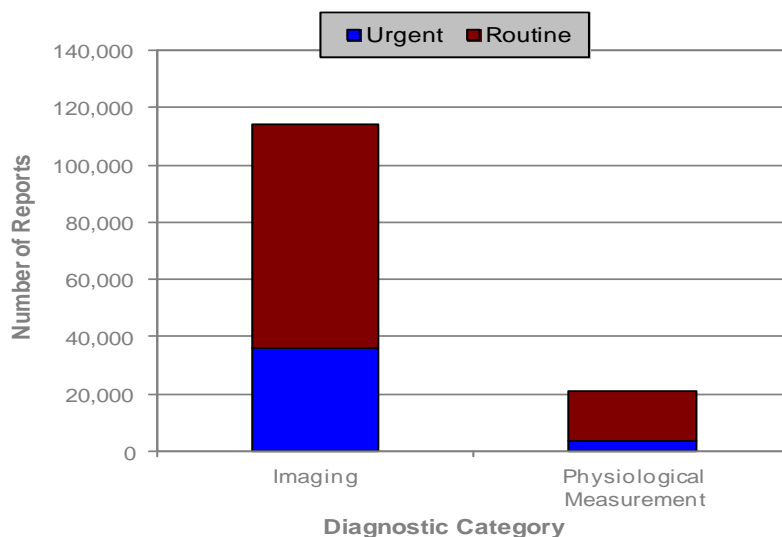


⁴ Refer to Explanatory Notes 1-5, 13-15 & 18-20

Diagnostic reports by diagnostic category⁴

Of the 135,961 completed diagnostic test reports, 114,675 (84.3%) were reporting on an Imaging test and 21,286 (15.7%) were reporting on a Physiological Measurement test (Figure 12 & Tables 6 & 7).

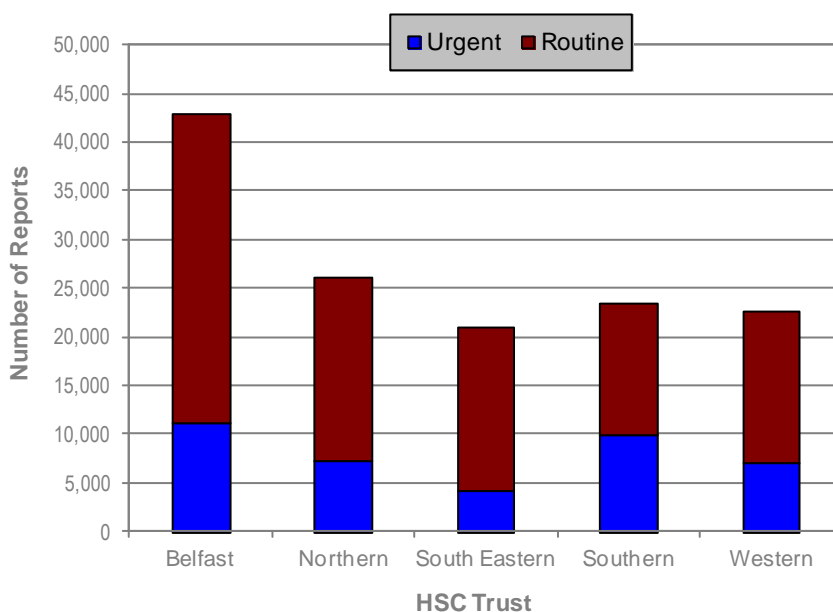
Figure 12: Number of completed diagnostic reports by category and priority during QE September 2015



Diagnostic reports by HSC Trust⁴

A total of 31.5% (42,861) diagnostic reports were completed in the Belfast HSC Trust, with 19.2% (26,168) completed in the Northern HSC Trust, 17.2% (23,351) in the Southern HSC Trust, 16.6% (22,576) in the Western HSC Trust and 15.4% (21,005) in the South Eastern HSC Trust (Figure 13 & Tables 8 & 9).

Figure 13: Number of completed diagnostic reports by HSC Trust and priority during QE September 2015



⁴ Refer to Explanatory Notes 1-5, 13-15 & 18-20

2015/16 Diagnostic reporting time target⁵

The Ministerial target for diagnostic reporting times states that, from April 2015, all urgent diagnostic tests should be reported on within two days of the test being undertaken. This means that 100% of urgent diagnostic tests subject to the target should be reported on within two days.

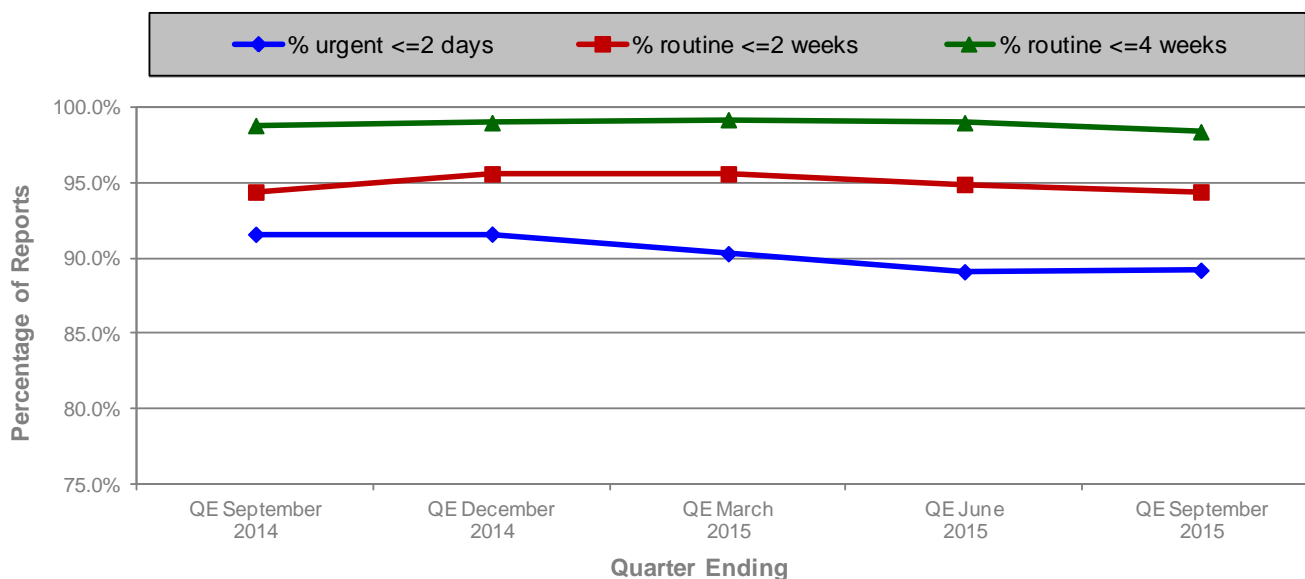
Figure 14: HSC Trust performance against the 2015/16 reporting time target

HSC Trust	Target Achieved?
	Ministerial Target: All urgent diagnostic tests reported on within 2 days
Belfast	No
Northern	No
South Eastern	No
Southern	No
Western	No
Northern Ireland	No

During the quarter ending September 2015, Northern Ireland as whole did not meet this target, nor did any of the individual Trusts (Figure 14).

Of the 39,611 urgent diagnostic tests reported on during the quarter ending September 2015, 89.2% (35,347) were reported on within 2 days. This is an increase of 0.1 percentage points compared with the previous quarter (89.1%) (Figure 15 & Table 11). Compared with the same quarter in the previous year, the percentage of urgent diagnostic tests reported on within two days has decreased by 2.4 percentage point (91.6%). (Figure 15 & Table 11).

Figure 15: Percentage of diagnostic tests reported within 2 days/2weeks/4weeks: Quarterly trends QE September 2014 - QE September 2015



⁵ Refer to Explanatory Notes 1-5, 13-16 & 18-20

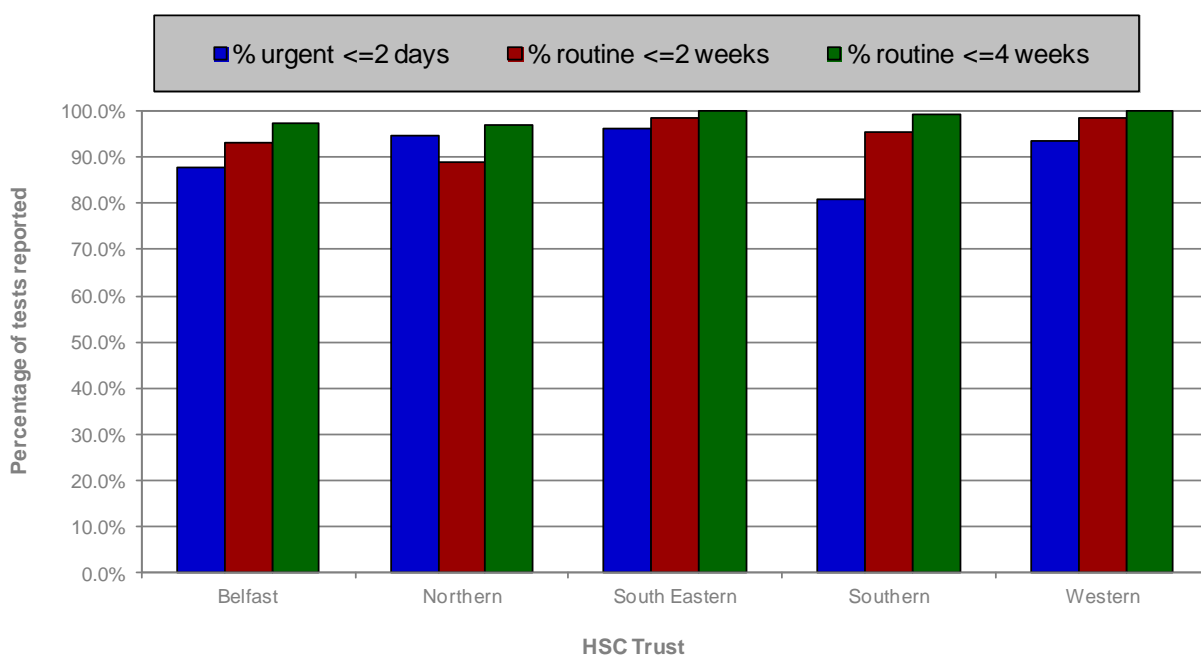
Performance against target by Diagnostic category⁵

Of the 39,611 urgent diagnostic tests reported on during the quarter ending September 2015, 36,035 were imaging reports and 3,576 were physiological measurement reports. A total of 88.9% of urgent imaging tests were reported on within 2 days, compared to 92.8% of urgent physiological measurement tests (Table 6).

Performance against target across Trusts⁵

Although no Trust managed to report on 100% of urgent diagnostic tests within 2 days, all Trusts did manage to report on at least 80.8%, with the South Eastern HSC Trust reporting on 96.3% within 2 days (Figure 16 & Table 10).

Figure 16: Percentage of diagnostic tests reported within 2 days/2weeks/4weeks by HSC Trust during QE September 2015



⁵ Refer to Explanatory Notes 1-5, 13-16 & 18-20

2015/16 Diagnostic reporting time indicators of performance⁶

The 2015/16 Ministerial indicators of performance for diagnostic reporting times refer to (i) the percentage of routine diagnostic tests reported on within 2 weeks of the test being undertaken, and (ii) the percentage of routine diagnostic tests reported on within 4 weeks of the test being undertaken.

During the quarter ending September 2015, there were a total of 96,350 completed routine diagnostic tests, of which 90,915 (94.4%) were reported on within two weeks (Table 7).

A further 3,907 (4.1%) routine tests were reported on within two to four weeks, giving a total of 94,822 (98.4%) reported on within four weeks. It took more than four weeks to report on 1,528 (1.6%) of these routine diagnostic tests (Tables 7 & 9).

Compared with the previous quarter, the percentage of routine diagnostic tests reported on within two weeks decreased by 0.5 percentage points.

Compared with the same quarter in the previous year, the percentage of routine diagnostic tests reported on within two weeks remained the same at 94.4% (Figure 15 & Table 11).

The percentage of routine diagnostic tests reported on within four weeks decreased by 0.6 percentage points when compared with the previous quarter, and 0.4 percentage points when compared to the same quarter in the previous year (Figure 15 & Table 11).

Indicators of performance by Diagnostic category⁶

Of the 96,350 routine diagnostic tests reported on during the quarter ending September 2015, 78,640 were imaging reports, while 17,710 were physiological measurement reports. A total of 94.4% of routine imaging tests were reported on within 2 weeks, compared to 94.3% of routine physiological measurement tests (Table 7).

A total of 98.2% of routine imaging tests were reported on within 4 weeks, compared to 99.6% of routine physiological measurement tests (Table 7).

Indicators of performance by Trust⁶

All Trusts managed to report on at least 88.8% of routine diagnostic tests within two weeks, with the Western Trust reporting on 98.6% of routine diagnostic tests within two weeks. All Trusts managed to report on at least 96.9% of routine diagnostic tests within four weeks (Figure 16 & Table 10).

⁶ Refer to Explanatory Notes 1-5, 13-15 & 17-20

Waiting times for Diagnostic Tests

Table 1a: Number of patients waiting for a diagnostic service – 30th September 2015¹

Total Waiting :	Number of patients waiting: 30th September 2015	Change compared with the end of the previous quarter	Change compared with the same quarter previous year
16 Selected Services*	75,475	+714	+14,657
Other Services	15,168	+243	+3,011
Total	90,643	+957	+17,668

Source: Departmental Return SDR 1 (Parts 1 & 2)

¹Refer to Explanatory Notes 1-10 & 18

* Refer specifically to Explanatory Note 2

Table 1b: Number of patients waiting for a diagnostic service by category – 30th September 2015¹

Diagnostic Service Category	Number of patients waiting for one of the 16 selected services - 30th September 2015*	Number of patients waiting for one of the other diagnostic services - 30th September 2015	Total waiting for a diagnostic service - 30th September 2015
Imaging (excluding Interventional Imaging)	41,539	4,596	46,135
Physiological Measurement	19,228	7,304	26,532
Endoscopy (Day Case)	14,708	3,268	17,976
Total waiting for diagnostic tests	75,475	15,168	90,643

Source: Departmental Return SDR 1 (Parts 1 & 2)

¹Refer to Explanatory Notes 1-11 & 18

* Refer specifically to Explanatory Note 2

Table 2: Number of patients waiting longer than 9 weeks for a diagnostic service – 30th September 2015³

Waiting more than 9 weeks for:	Number of patients waiting: 30th September 2015	Change compared with the end of the previous quarter	Change compared with the same quarter previous year
16 Selected Services*	28,101	+1,196	+13,132
Other Services	3,506	+350	+1,234
Total	31,607	+1,546	+14,366

Source: Departmental Return SDR 1 (Parts 1 & 2)

³Refer to Explanatory Notes 1-12, 16 & 18

* Refer specifically to Explanatory Note 2

Table 3: Number of patients waiting for a diagnostic service, by type of service and weeks waiting – 30th September 2015³

Diagnostic Test	Patients Waiting for a Diagnostic Test by Weeks						Total Waiting
	0 - 6	>6 - 9	>9 - 13	>13 - 21	>21 - 26	>26	
Non-obstetric ultrasound	11,256	3,123	2,634	1,601	50	57	18,721
Magnetic Resonance Imaging	6,692	2,045	1,699	1,352	102	355	12,245
Cardiology - echocardiography	3,017	1,354	1,194	1,974	910	1,506	9,955
Computerised Tomography	4,945	939	683	974	300	334	8,175
Gastroscopy (Day Case)	2,497	784	705	938	327	688	5,939
Audiology - pure tone audiometry	1,535	533	517	763	520	1,337	5,205
Colonoscopy (Day Case)	1,992	510	431	556	183	696	4,368
Plain Film Xrays	3,329	93	11	1	1	1	3,436
Ambulatory ECG monitoring (24 hr holter)	1,679	388	234	109	5	5	2,420
Cystoscopy (Day Case)	859	153	127	240	135	720	2,234
Flexi sigmoidoscopy (Day Case)	856	275	219	342	122	353	2,167
DEXA Scan	1,017	237	269	352	44	0	1,919
Neurophysiology - peripheral neurophysiology	671	228	290	518	39	20	1,766
Arthroscopy	90	97	125	258	124	588	1,282
Fluroscopy	709	121	89	73	0	0	992
Cardiology - perfusion studies	313	127	111	120	37	282	990
Hysteroscopy	495	105	91	155	38	74	958
Spirometry inc.flow volume curves	633	115	61	9	0	0	818
Transfer Factor	524	99	60	9	0	0	692
Urodynamics - pressures and flows	267	93	91	109	40	86	686
Other	3,661	580	331	431	143	529	5,675
Total waiting for diagnostic tests	47,037	11,999	9,972	10,884	3,120	7,631	90,643

Source: Departmental Return SDR 1 (Parts 1 & 2)

³Refer to Explanatory Notes 1-12, 16 & 18

Table 4: Number of patients waiting for a diagnostic service, by HSC Trust – 30th September 2015³

HSC Trust	All patients waiting for a diagnostic service by HSC Trust and weeks waiting: 30th September 2015						Total Waiting
	0 - 6	>6 - 9	>9 - 13	>13 - 21	> 21 - 26	>26	
Belfast	13,012	3,987	4,104	4,452	1,291	2,206	29,052
Northern	11,028	2,628	2,053	2,376	1,020	2,476	21,581
South Eastern	6,276	1,205	695	1,090	438	1,861	11,565
Southern	9,432	3,137	2,691	2,673	271	602	18,806
Western	7,289	1,042	429	293	100	486	9,639
Total	47,037	11,999	9,972	10,884	3,120	7,631	90,643
Total waiting more than nine weeks:		31,607					

Source: Departmental Return SDR 1 (Parts 1 & 2)

³Refer to Explanatory Notes 1-12 16 & 18

Diagnostic Reporting Times

Table 5: Number of completed diagnostic reports by priority – QE September 2015⁴

Priority of Report	QE September 2015	Change compared with previous quarter	Change compared with the same quarter previous year
Urgent Reports	39,611	+469	+3,352
Routine Reports	96,350	+1,060	-4,833
Total Reports	135,961	+1,529	-1,481

Source: Departmental Return DRTT

⁴Refer to Explanatory Notes 1-5, 13-15 & 18-20

Table 6: Number of completed urgent diagnostic reports by category – QE September 2015⁵

Category of test	Length of time reporting in days				Total Completed
	0 - 2 days	>2 - 14 days	>14 - 28 days	>28 days	
Imaging	32,030	3,782	188	35	36,035
Physiological Measurement	3,317	213	41	5	3,576
Total	35,347	3,995	229	40	39,611
0 - 2 days:	35,347 (89.2%)				
> 2 days:	4,264 (10.8%)				

Source: Departmental Return DRTT

⁵Refer to Explanatory Notes 1-5, 13-16 & 18-20

Table 7: Number of completed routine diagnostic reports by category – QE September 2015⁶

Category of test	Length of time reporting in weeks			Total Completed
	0 - 2 weeks	>2 - 4 weeks	>4 weeks	
Imaging	74,218	2,969	1,453	78,640
Physiological Measurement	16,697	938	75	17,710
Total	90,915	3,907	1,528	96,350
0 - 2 weeks: 90,915 (94.4%) >2 - 4 weeks: 3,907 (4.1%) >4 weeks: 1,528 (1.6%)				

Source: Departmental Return DRTT

⁶Refer to Explanatory Notes 1-5, 13-15 & 17-20

Table 8: Number of completed urgent diagnostic reports by HSC Trust and time in days – QE September 2015⁵

HSC Trust	Length of time reporting in days				Total Completed
	0 - 2 days	>2 - 14 days	>14 - 28 days	>28 days	
Belfast	9,818	1,254	88	16	11,176
Northern	6,932	353	20	6	7,311
South Eastern	4,047	153	3	0	4,203
Southern	8,055	1,790	111	15	9,971
Western	6,495	445	7	3	6,950
Total	35,347	3,995	229	40	39,611

Source: Departmental Return DRTT

⁵Refer to Explanatory Notes 1-5, 13-16 & 18-20

Table 9: Number of completed routine diagnostic reports by HSC Trust and time in weeks – QE September 2015⁶

HSC Trust	Length of time reporting in weeks			Total Completed
	0 - 2 weeks	>2 - 4 weeks	>4 weeks	
Belfast	29,461	1,411	813	31,685
Northern	16,747	1,527	583	18,857
South Eastern	16,521	276	5	16,802
Southern	12,778	494	108	13,380
Western	15,408	199	19	15,626
Total	90,915	3,907	1,528	96,350

Source: Departmental Return DRTT

⁶ Refer to Explanatory Notes 1-5, 13-15 & 17-20

Table 10: Percentage of completed reports achieved – QE September 2015⁷

HSC Trust	Percentage achieved		
	Percentage of urgent diagnostic tests reported on within two days	Percentage of routine tests reported on within two weeks	Percentage of routine tests reported on within four weeks
Belfast	87.8%	93.0%	97.4%
Northern	94.8%	88.8%	96.9%
South Eastern	96.3%	98.3%	100.0%
Southern	80.8%	95.5%	99.2%
Western	93.5%	98.6%	99.9%
Northern Ireland	89.2%	94.4%	98.4%

Source: Departmental Return DRTT

⁷Refer to Explanatory Notes 1-5 & 13-20

Table 11: Diagnostic reporting time performance (across all HSC Trusts in Northern Ireland) – QE September 2015⁷

Priority	Performance	Change compared with previous quarter	Change compared with the same quarter previous year
Urgent	% within two days: 89.2%	+0.1 percentage points	- 2.4 percentage points
Routine	% within two weeks: 94.4%	-0.5 percentage points	+/-0 percentage points
Routine	% within four weeks: 98.4%	-0.6 percentage points	-0.4 percentage points

Source: Departmental Return DRTT

⁷Refer to Explanatory Notes 1-5 & 13-20

Appendix 1: Explanatory Notes

1. The sources for the data contained in this release are the quarterly Departmental Returns SDR1 (Parts 1 & 2) and the DRTT Return. The source for the diagnostic waiting time data for the 16 selected diagnostic services is the Departmental Return SDR1 Part 1 (See explanatory note 2). The waiting time information for all other diagnostic services is provided by the HSC Board on the SDR1 Part 2 return. The diagnostic reporting turnaround time information is provided by the HSC Board on the DRTT return.
2. The 16 selected diagnostic services are: Magnetic Resonance Imaging; Computerised Tomography; Non-Obstetric Ultrasound; Barium Studies; DEXA Scan; Radio-Nuclide Imaging; Pure Tone Audiometry; Echocardiography; Perfusion Studies; Peripheral Neurophysiology; Sleep Studies; Urodynamics Pressures and Flows; Colonoscopy; Flexi Sigmoidoscopy; Cystoscopy and Gastroscopy.
3. All of the data contained in the tables can be supplied by individual diagnostic service or HSC Trust if this level of detail is required. In addition, quarterly data relating to diagnostic waiting times has also been published in spreadsheet format (Microsoft Excel), split by HSC Trust and diagnostic service, in order to aid secondary analysis. These data are available at <https://www.dhsspsni.gov.uk/publications/northern-ireland-waiting-time-statistics-outpatient-diagnostic-and-inpatient-waiting>
4. The diagnostic waiting and reporting turnaround times returns (SDR1 Parts 1 and 2, DRTT) include patients living outside Northern Ireland and privately funded patients waiting for treatment in Health Service hospitals in Northern Ireland.
5. HSC Trusts use the Northern Ireland Picture Archive and Communications System (NIPACS) as the mechanism for managing imaging services. The HSC Board has carried out a validation exercise with Trusts to address any data quality issues. The quality of imaging waiting times and reporting times have improved in recent years.
6. A **diagnostic service** provides an examination, test or procedure used to identify a person's disease or condition and which allows a medical diagnosis to be made. There are three categories of diagnostic test: Imaging Service; Physiological Measurement test; and Day Case Endoscopy.
7. The **diagnostic waiting time** relates to all tests with a diagnostic element. Included are tests that are part diagnostic and subsequently part therapeutic. A therapeutic procedure is defined as a procedure which involves actual treatment of a person's disease, condition or injury. Purely therapeutic procedures are excluded from the diagnostic waiting times target. Patients currently admitted to a hospital bed and waiting for an emergency procedure, patients waiting for a planned procedure and patients waiting for procedures as part of screening programmes are also excluded from the waiting times target.
8. The waiting time for a diagnostic service commences on the date on which the referral for the service is received by the Health Care provider and stops on the date on which the test is performed. Patients who cannot attend (CNA) have their waiting time adjusted to commence on the date they informed the HSC Trust they could not attend, while patients who do not attend (DNA) have their waiting time adjusted to commence on the date of the DNA.
9. A number of the diagnostic services reported on the SDR 1 return are managed as an inpatient admission: either an ordinary admission or a day case. As such, they will be included in both the inpatient and diagnostic services waiting time figures. Due to the risk of multiple counting, these two sets of data should not be combined to give an estimate of the total number of patients waiting for either inpatient admission or a diagnostic service.
10. Waiting time statistics for day case endoscopies also include patients waiting for these services that are managed as ordinary admissions.

11. For Tables 2, 3 and 4 and Figures 6, 7, 8, 9 and 10, each diagnostic waiting timeband relates to the number of completed weeks a patient has been waiting for a diagnostic service. For example, a patient waiting exactly 6 weeks would be included in the 0-6 week time band and a patient waiting 6 weeks and 1 day would be included in the >6-9 (greater than 6 weeks but waiting no longer than 9 weeks) week time band.
12. Patients waiting 'longer than nine weeks' for a diagnostic service includes all patients in the >9 - 13, >13 - 21, >21 - 26 and > 26 week time bands.
13. The **diagnostic reporting turnaround time** is the time interval between the completion of the diagnostic test and the results of that test being verified or dispatched to the referring clinician in Northern Ireland, whichever is applicable.
14. Diagnostic reporting times apply to a selected subset of diagnostic services. These services are: Magnetic Resonance Imaging; Computerised Tomography; Non-Obstetric Ultrasound; Barium Studies; DEXA Scan; Radio-Nuclide Imaging; Pure Tone Audiometry; Echocardiography; Perfusion Studies; Peripheral Neurophysiology; Sleep Studies; and Urodynamics Pressures and Flows.
15. Information on Plain Film Xray reporting times has been collected from April 2015 however as it is not included as part of the 2015/16 Ministerial Target, the commentary and figures within this publication do not include them. Information on Plain Film Xray reporting times however have been provided within the accompanying excel document.
16. The 2015/16 Ministerial diagnostic target, as detailed in the Health and Social Care (Commissioning Plan) Direction (Northern Ireland) 2015, states that, from April 2015, no patient should wait longer than nine weeks for a diagnostic test, and all urgent diagnostic tests are reported on within two days of being undertaken.
17. The 2015/16 Ministerial indicators of performance, as detailed in the Health and Social Care (Indicators of Performance) Direction (Northern Ireland) 2015, measure (i) percentage of routine diagnostic tests reported on within 2 weeks of the test being undertaken and (ii) percentage of routine diagnostic tests reported on within four weeks of the test being undertaken.
18. The information on diagnostic and reporting times contained within this publication is currently under review. The Department is looking at how this information is sourced and the validation procedures that are carried out with a view to improving the quality. All quality issues identified as part of this review are being addressed on an ongoing basis.
19. Department of Health, Social Services and Public Safety policy is to publish revised figures with subsequent statistical releases unless it is decided that the magnitude of the change merits earlier notification.
20. Amended DRTT returns were received for the QE June 2015 for Belfast Trust. The changes have been reflected in this bulletin.
21. The information contained within this publication is not National Statistics.
22. Figures relating to the quarter ending 31st December 2015 will be released on Thursday 25th February 2016.

Additional Information

Further information on Waiting Times for Diagnostic Services at HSC Trusts in Northern Ireland is available from:

Jennifer Lynn

Hospital Information Branch

Information & Analysis Directorate

Department of Health, Social Services & Public Safety

Stormont Estate

Belfast, BT4 3SQ

☎ Tel: 028 905 22081

☎ Fax: 028 905 23288

✉ Email: jennifer.lynn@dhsspsni.gov.uk

This Statistical bulletin and others published by Hospital Information Branch are available to download from the DHSSPS Internet site at:

Internet address: <https://www.dhsspsni.gov.uk/topics/dhssps-statistics-and-research>