

INFORMATION  
ANALYSIS  
DIRECTORATE



# Children Adopted from Care in Northern Ireland 2018/19



# Reader Information

Document purpose	This bulletin details statistical information relating to children adopted from care in Northern Ireland during the year ending 31 March 2019.
Reporting period	1 April 2018 – 31 March 2019
Authors / statisticians	Heidi Rodgers and Iain Waugh
Publication Date	3 <sup>rd</sup> October 2019
Issued by	Community Information Branch Information & Analysis Directorate Department of Health Stormont Estate, Belfast, BT4 3SQ, Northern Ireland Tel (028) 90522580 Email <a href="mailto:cib@health-ni.gov.uk">cib@health-ni.gov.uk</a> <a href="http://www.health-ni.gov.uk/articles/children-adopted-care">www.health-ni.gov.uk/articles/children-adopted-care</a>
Target Audience	Directors of Children’s Services, Chief Executives of Boards and HSC Trusts in Northern Ireland, health care professionals, academics and social care stakeholders.
Copyright	This publication is Crown copyright and may be reproduced free of charge in any format or medium. Any material used must be acknowledged, and the title of the publication specified.
Price	FREE

Statistics and research for the **Department of Health** is provided by the Information and Analysis Directorate (IAD). IAD is responsible for compiling, processing, analysing, interpreting and disseminating a wide range of statistics covering health and social care.



The statisticians within IAD are out posted from the Northern Ireland Statistics & Research Agency (NISRA) and the statistics are produced in accordance with the principles and protocols set out in the [Code of Practice for Official Statistics](#).

[www.health-ni.gov.uk/topics/doh-statistics-and-research](http://www.health-ni.gov.uk/topics/doh-statistics-and-research)

IAD comprises four statistical sections: Hospital Information, Community Information, Public Health Information & Research and Project Support Analysis.

This publication is produced by Community Information Branch.

#### **Our Vision and Values**

- *Provide up-to-date, quality information on children and adult social services and community health;*
- *to disseminate findings widely with a view to stimulating debate, promoting effective decision-making and improvement in service provision; and*
- *be an expert voice on social care information.*

[www.health-ni.gov.uk/topics/dhssps-statistics-and-research-social-services/social-care-statistics](http://www.health-ni.gov.uk/topics/dhssps-statistics-and-research-social-services/social-care-statistics)

#### **About Community Information Branch**

The purpose of Community Information Branch (CIB) is to promote effective decision making in children and adult social services by providing quality information and analysis.

We collect, analyse, and publish a wide range of community information that is used to help monitor the delivery of personal social services policy. Information collected by CIB is used to assess HSC Trust performance, for corporate monitoring, policy evaluation, and to respond to parliamentary/assembly questions.

Information is widely disseminated through a number of regular key statistical publications and ad hoc reports, details of which are available online.

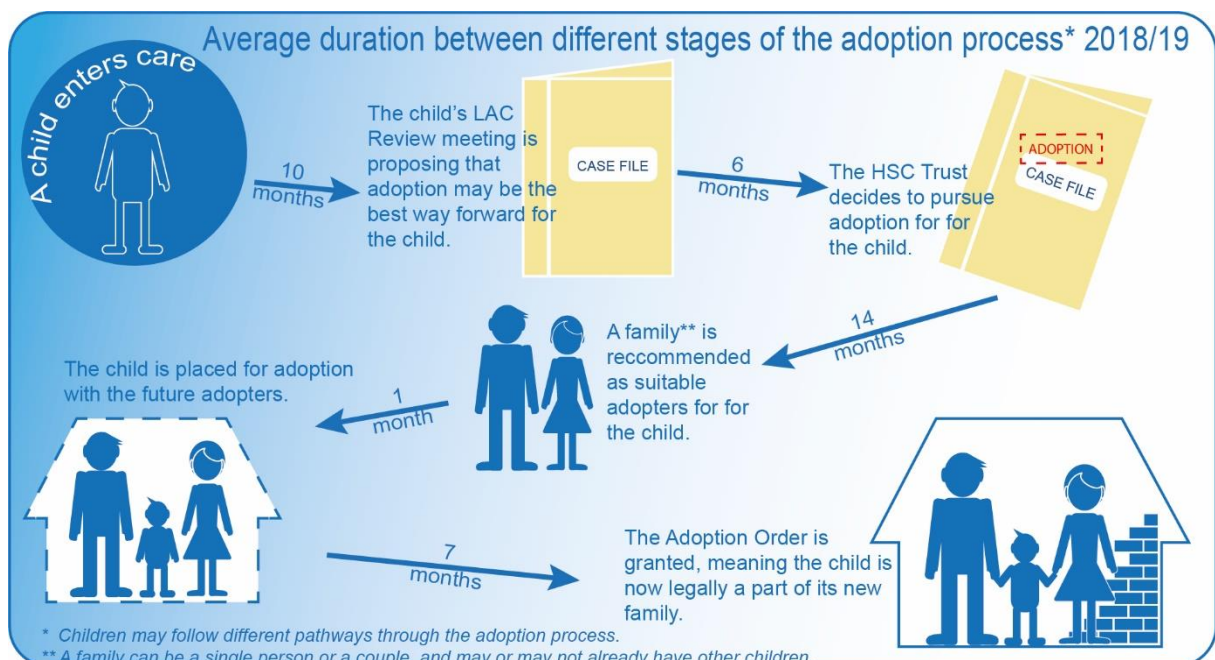
# Content

<b>Reader Information .....</b>	<b>2</b>
<b>Content .....</b>	<b>4</b>
<b>Key findings.....</b>	<b>5</b>
<b>Introduction .....</b>	<b>6</b>
<b>Children Adopted from Care in Northern Ireland 2018/19.....</b>	<b>7</b>
<b>1. Adoptions from care .....</b>	<b>7</b>
<b>2. The adopters .....</b>	<b>8</b>
<b>3. Children adopted from care.....</b>	<b>9</b>
Table 1 Children adopted from care (year ending 31 March) .....	9
<b>4. Timing of the adoption process .....</b>	<b>10</b>
Table 2 Duration of final period of care (year ending 31 March) .....	10
Table 3 Average durations between different stages of the adoption process (year ending 30 March) .....	11
Table 4 Average ages of children at different stages of the adoption process (year ending 31 March) .....	14
Table 5 Average duration between different stages of the adoption process by age at the start of the last period in care (year ending 31 March) .....	15
<b>5. Adoption process by age group .....</b>	<b>16</b>
Table 6 Average duration between Trust LAC best interest proposal and adoption by age, year ending 31 March 2019.....	16
<b>6. Type of adopters.....</b>	<b>17</b>
Table 7 Type of adoptions / pathways to adoption (year ending 31 March) .....	17
Table 8 Average durations between different stages of the adoption process by type of adopters (year ending 31 March 2019) .....	19
Table 9 Average ages of children at different stages of the adoption process by type of adopters (year ending 31 March 2019) .....	19
<b>7. UK adoption statistics comparison.....</b>	<b>20</b>
Table 10 Adoption statistics for Northern Ireland, England and Wales (year ending 31 March) .....	20
<b>Appendix A – Technical Notes .....</b>	<b>21</b>
<b>Appendix B - Additional Tables .....</b>	<b>24</b>
Table 11 Number of Children adopted from Care in Northern Ireland (year ending 31 March) .....	24
Table 12 Number of Children adopted from Care in Northern Ireland by HSC Trust (year ending 31 March) .....	25

# Key findings

This bulletin details statistical information relating to children adopted from care in Northern Ireland during the year ending 31 March 2019, including a range of information about these children and their adopters, and durations between different stages in the adoption process. The bulletin is based on the Department of Health's statistical return AD1 2018/19<sup>1</sup>, collected from each of the Health and Social Care Trusts in Northern Ireland.

- Seventy-three children were adopted from care in Northern Ireland during the year ending 31 March 2019;
- The average age of children at the time of adoption was 4 years 3 months, one month older compared to the previous year;
- From the child's last entry into care, the average length of time for a child to be adopted in 2018/19 was 3 years 1 month. This was one month shorter than in the previous year;
- For children adopted in 2018/19, the average duration from the HSC Trust proposal that adoption was in the best interest for the child (the LAC Best Interest Proposal) to the Adoption Order was 2 years 3 months, one month longer than in 2017/18;
- In 2018/19 children adopted by Adopters Only<sup>2</sup> and those placed with Concurrent Carers<sup>3</sup> were substantially younger at the time of adoption (2 years 11 months and 3 years 0 months respectively compared with the national average of 4 years and 3 months). They also had a shorter last duration in care (2 years 3 months and 2 years 4 months respectively compared with the national average of 3 years 1 month).



<sup>1</sup> Please see Appendix for details of the return.

<sup>2</sup> The child is placed with approved adopters for the purpose of adoption after a Freeing Order has been granted by the courts.

<sup>3</sup> The child is placed with carers who are approved as foster carers and adopters while the future of the child is still being decided.

# Introduction

Adoption, unlike any other permanence option, involves the ending of a child's legal relationship with their birth parents and family and the creation of a lifelong relationship with new parents and family. The facilities to be provided as part of the adoption service, including arrangements for assessing children and prospective adopters, placing children for adoption, and the particular procedures to be followed before and after a child is placed for adoption are all specified in legislation – the Adoption (Northern Ireland) Order 1987 and the Adoption Agencies Regulations (Northern Ireland) 1989.

This legal framework and the processes that Social Workers are expected to adhere to in carrying out their duties in relation to Adoption Services are further explained in the Adoption Regional Policy and Procedures (2017)<sup>4</sup>.

As part of review of the child's Care Plan, where it is decided that adoption is the preferred option for permanence, the Health and Social Care (HSC) Trust must follow statutory processes. This includes providing information and counselling to the child and parents, gathering information (including ascertaining the wishes and feelings of the child and parents) and referring a report to the Adoption Panel and the Adoption Agency Decision-maker for consideration of a Best Interests Decision (whether the child should be placed for adoption). Usually the HSC Trust will work to find a suitable match for the child with prospective adopters whilst Freeing Order proceedings are commenced. Following formal placement for adoption of the child with the prospective adopters, the adopters can apply to the Court for an Adoption Order to be made.

In respect of applications by prospective adopters, the Adoption Agency must follow prescribed processes in relation to the applicant(s), from the Initial Enquiry/ Counselling Interview through to the Preliminary Checks, Preparation Course, Pre-Assessment Checks, the Assessment Process and finally, a consideration by the Adoption Agency's Adoption Panel and Decision-Maker as to the suitability of the applicant.

Work is currently underway to modernise adoption legislation through the introduction of a new Adoption and Children Bill. It is intended that the Bill will largely replace the 1987 Order, effecting most of the proposals outlined in the Department's draft adoption strategy, *Adopting the Future 2006*. The Bill will also amend the Children (Northern Ireland) Order 1995, which is the primary law relating to the care and protection of children. As most children are adopted from the care system, the amendments are designed to improve planning and permanence for children in care.

**Family and Children's Policy Directorate**  
**Department of Health**  
**October 2019**

---

<sup>4</sup> *The Adoption Regional Policy and Procedures October 2017*

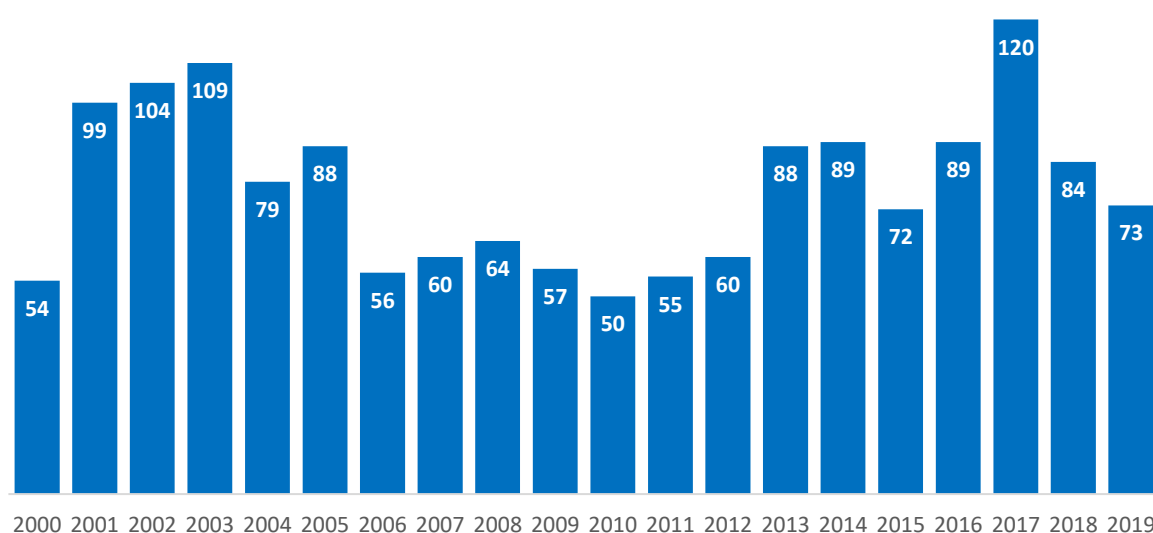
# Children Adopted from Care in Northern Ireland 2018/19

## 1. Adoptions from care

During the year ending 31 March 2019, 73 children were adopted from care in Northern Ireland. This was a decrease of 13% on the previous year however similar to the figure recorded during 2014/15 (see Figure 1).

Figure 1 sets out the yearly number of adoptions from care. It shows that adoption numbers were notably high between 2001 and 2003 – this is thought to be due to an emphasis by all Health and Social Care (HSC) Trusts on encouraging prospective adopters to register as foster carers, resulting in a placement for children at the earliest juncture with foster carers who would then go on to adopt the child<sup>5</sup>. Between 2005/06 and 2011/12, the numbers of adoptions were steady, however somewhat lower than in recent years (between fifty and just over sixty children a year). The increase from 2013 could be linked with renewed focus on adoption and the timeliness of the adoption process, for example with the establishment of Adoption Regional Information System to help identify suitable parents for children in a timely fashion.

Figure 1 Number of children adopted from care in Northern Ireland (year ending 31 March)



Source for years 2000 and 2001: *Adopting Best Care*, Social Services Inspectorate, DHSSPS May 2002  
Source from 2003: AD1 Surveys, DoH <https://www.health-ni.gov.uk/articles/children-adopted-care>  
Note: Number of adoptions has been estimated for the years 2002, 2007, 2009 and 2011.

<sup>5</sup> *Adopting Best Care*, Social Services Inspectorate, DHSSPS May 2002

Figure 2 Number of children adopted from care by HSC Trust year ending 31 March 2019 (percentage of all children adopted from care)

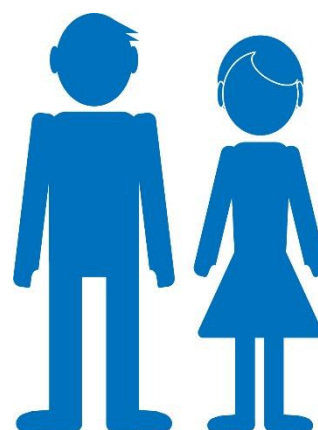


© Crown copyright 2019

The Belfast HSC Trust had the largest number of looked after children adopted from care in 2018/19 (22 children), followed by the Western HSC Trust where 18 looked after children were adopted. In the Northern, South Eastern and Southern HSC Trusts, 16, 9 and 8 looked after children were adopted respectively. As the number of children adopted in each HSC Trust is quite small, care must be taken when making year on year comparisons<sup>6</sup>.

## 2. The adopters

Some 81% of adopters were married couple adopters or different sex unmarried couples, 11% were same sex couples and 8% were single females adopters. Of all the adopters, less than 5 had previously adopted a child or children<sup>7</sup>, and 18% had dependent birth children in the household. The age of the adopters ranged from mid twenties to sixty, with the largest proportion of the adopters being in their forties at the time of the adoption (58%).



<sup>6</sup> Please see Appendix for yearly figures.

<sup>7</sup> Please note that this is based on the 73 adoptions during 2018/19, hence adopters who have adopted more than one child in 2018/19 will have been counted more than once.



### 3. Children adopted from care

Table 1 sets out the main characteristics of children adopted from care in Northern Ireland from 2014/15 to 2018/19. In 2018/19, the age of children adopted from care ranged from 1 year and 3 months to 14 years and 10 months. As in previous years, the majority of the children were between one and four years at the time of adoption.



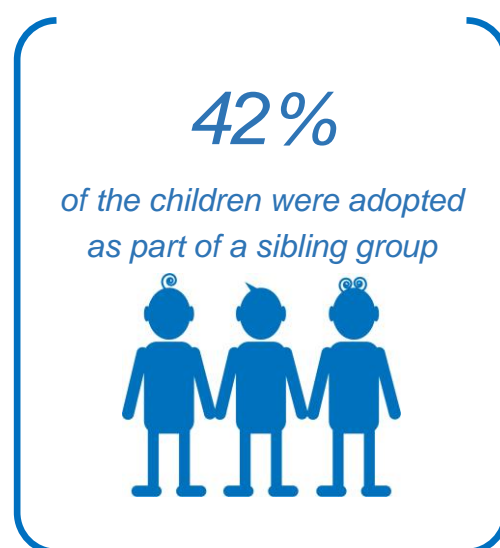
Table 1 Children adopted from care (year ending 31 March)

	Number					Percentages				
	2015	2016	2017	2018	2019	2015	2016	2017	2018	2019
	N	N	N	N	N	%	%	%	%	%
<b>All children adopted</b>	<b>72</b>	<b>89</b>	<b>120</b>	<b>84</b>	<b>73</b>	<b>100</b>	<b>100</b>	<b>100</b>	<b>100</b>	<b>100</b>
Female	38	43	53	41	31	53	48	44	49	42
Male	34	46	67	43	42	47	52	56	51	58
<b>Age at adoption</b>										
Under 1		0	<5		0		0	-		0
1-4	{52	62	78	{57	48	{72	70	65	{68	66
5-9	20	23	39	27		28	26	33	32	
10-15	0	4	<5	0	{25	0	4	-	0	{34
16+	0	0	0	0	0	0	0	0	0	0
<b>Average age (yrs:months)</b>	4:1	4:5	4:5	4:2	4:3					
<b>Minimum age (yrs:months)</b>	0:11	1:3	0:10	0:11	1:3					
<b>Maximum age (yrs:months)</b>	9:1	11:9	11:0	9:9	14:10					

In order to avoid personal disclosure, some cells have been suppressed or merged when the actual figure is less than 4. '-' represents a percentage that has been suppressed in order to prevent the actual figure from being calculated.

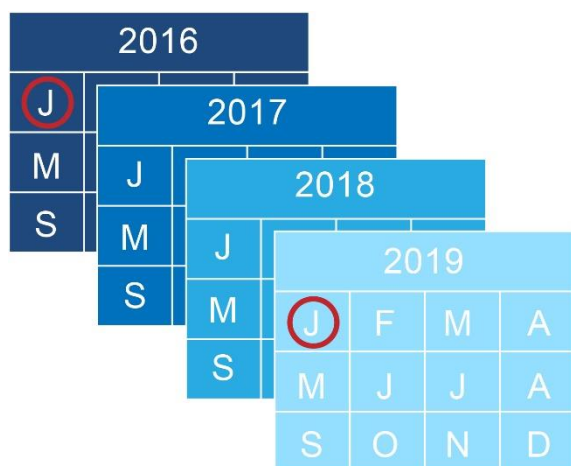
All of the children adopted from care were of white ethnic background (100%). Some nineteen children (26%) had special needs or a disability. This included learning disabilities, autism, behavioural difficulties and mental health difficulties.

In 2018/19, 42 of the children (58%) were adopted as a single child adoption whereas 42% were adopted as part of a sibling group.



#### 4. Timing of the adoption process<sup>8</sup>

The average length of time between the date of the child's last period of care started to the Adoption Order was made was 3 years 1 months in 2018/19. The average length has stayed around three years since 2013/14. Just over a fifth of the children (22%) were adopted within



two years of entering the final period of care. Some five children (7%) had been in care for five years or longer at the time of adoption.

For some children who enter care, adoption is the preferred means to secure permanency and stability and the agreed care plan would be identified at an early juncture. For other children, adoption may not be considered until the child has spent some time in care, for example after changes to the child's family situation which

makes it unlikely that the child can return home to birth parents. This will in some cases explain the above variation in durations, where the shortest time from entering care to adoption was 1 year and 3 months and the longest time was 8 years 2 months.

Table 2 Duration of final period of care (year ending 31 March)

Duration of final period of care	Year					Year				
	2015	2016	2017	2018	2019	2015	2016	2017	2018	2019
	N	N	N	N	N	%	%	%	%	%
Under 2 years	14	17	27	18	16	19	19	23	21	22
2 years to under 3 years	20	31	40	24	24	28	35	33	29	33
3 years to under 5 years	32	36	45	36	28	44	40	38	43	38
5 years and over	6	5	8	6	5	8	6	7	7	7
<b>All</b>	<b>72</b>	<b>89</b>	<b>120</b>	<b>84</b>	<b>73</b>	<b>100</b>	<b>100</b>	<b>100</b>	<b>100</b>	<b>100</b>
<b>Average duration (yrs:months)</b>	3:1	2:11	3:0	3:2	3:1					
<b>Minimum duration (yrs:months)</b>	0:9	0:7	0:10	0:11	1:3					
<b>Maximum duration (yrs:months)</b>	7:11	6:5	7:5	9:6	8:2					

There are a number of factors however that may cause delays to the duration of the adoption process. Although every child's situation is unique, with regards to the children adopted during 2018/19, it has been highlighted that some delays were influenced by delays within the court

<sup>8</sup> Please note that there has been a slight change to methodology which has caused minor revisions to some historic figures. Please see Technical Notes for details.

system, for example additional assessments of family members had to be carried out; appeals within the Courts; and the breakdown of a previous prospective adoptive placement.

Table 3 sets out the duration between different stages of the adoption process. The average duration from last admission into care to Trust LAC Best Interest Proposal for children adopted in 2018/19 was 10 months, two months shorter than in 2017/18. The Trust LAC Best Interest Proposal is the child's LAC Review where it is agreed to pursue adoption as an option and refer the child's circumstances to the Adoption Panel for recommendation. In general it took 6 months from the Trust LAC Best Interest Proposal to when the Trust accepted the Adoption Panel's recommendation that adoption was in the best interest of the child (Best Interest Decision); this period ranged from less than 1 month to 2 years 8 months for the children adopted. Furthermore, the average duration from LAC Best Interest Proposal to the date the Trust accepted the Panel's recommendation that adopters were suitable for the particular child was 1 year 6 months.

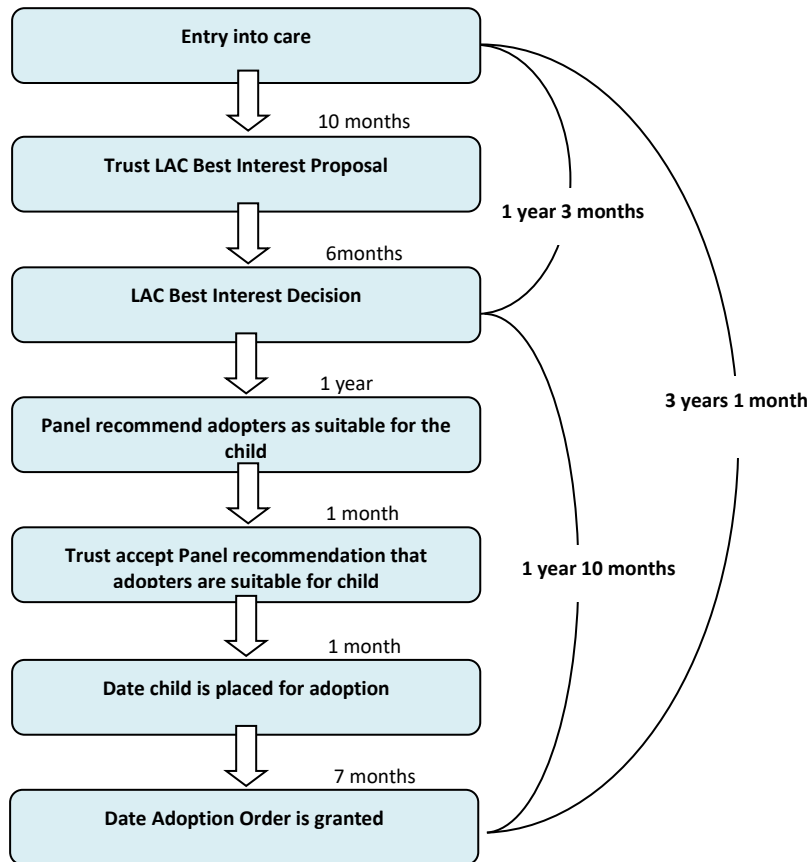
For children adopted in 2018/19, the average duration from the Trust LAC Best Interest Proposal to adoption was 2 years 3 months, similar to that of recent years. In 2017/18, this ranged from 9 months to 4 years 8 months.

Table 3 Average durations between different stages of the adoption process (year ending 30 March)

Stages in the adoption process	Average Durations (Years : Months)				
	2015	2016	2017	2018	2019
<b>Last admission to care to Trust LAC Review Best Interest Proposal</b>	1:0	0:9	0:9	1:0	0:10
Trust LAC Best Interest Proposal to Best Interest Decision	0:6	0:7	0:6	0:6	0:6
Trust LAC Best Interest Proposal to Panel recommend adopters as suitable for child	1:5	1:5	1:7	1:5	1:6
Trust LAC Best Interest Proposal to Trust Accept Adopters Suitable	1:6	1:6	1:8	1:6	1:7
Trust LAC Best Interest Proposal to Placement	1:7	1:7	1:9	1:7	1:9
Trust LAC Best Interest Proposal to Adoption Order	2:4	2:3	2:4	2:2	2:3

Note: Some children may be excluded from calculations due to missing values or dates. Figures have been revised and may differ slightly from previous publications

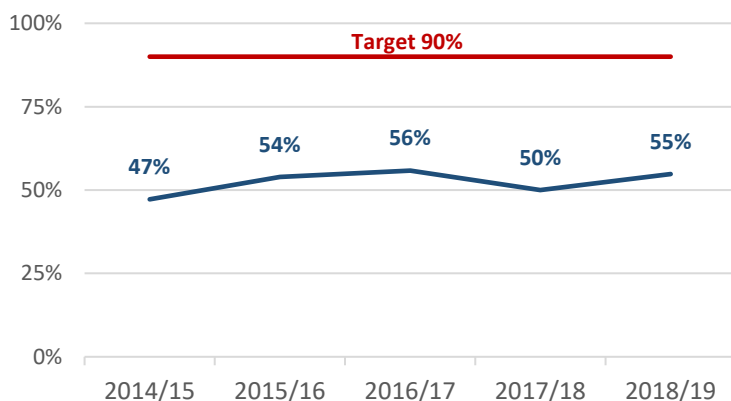
Figure 3 Average durations between different stages of the adoption process (year ending 31 March 2019)



Note: The time between different stages of the adoption process may not add to the total time as a small number of cases have been excluded from some of the interim calculations due to missing values or dates.

## The Health and Social Care Commission Plan and Indicators of Performance Direction (Northern Ireland) 2018

### Percentage of children who are adopted within three years of last entering care

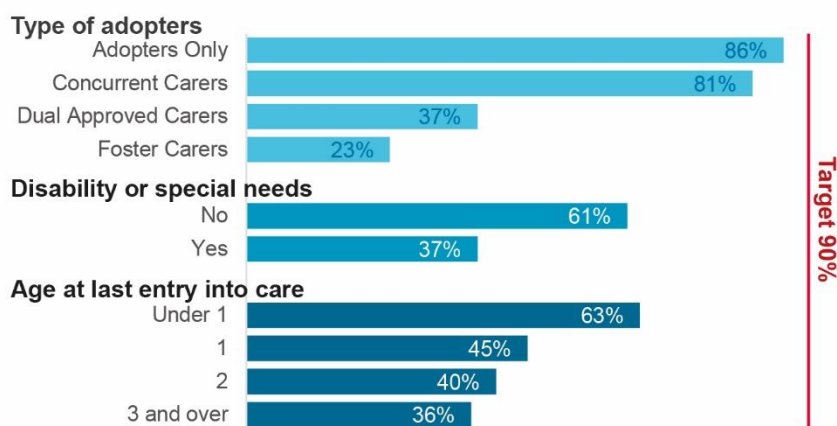


Adoption is not the best option for every child who is in care; however for those children where adoption would be in their best interest, it is important that this is identified early to ensure that the child can be placed in a stable family setting.

Ensuring the timeliness of the adoption process is a priority for the Department of Health. This is reflected in its Commissioning Plan Direction<sup>9</sup> which includes a target and an indicator relating to the timing of the adoption process.

The target sets out that 90% of all adoptions from care should be completed within three years of last entering care.

### Percentage of children adopted within three years of last entering care



The timing of the adoption relates to many factors and is unique for each individual child. Two factors that may influence the adoption journey are the child's age when entering care and if the child has a disability.

The type of adopters that the child can suitably be placed with is a reflection of the child's care history and its personal circumstances.

As can be seen, a higher proportion of younger children, those without disabilities and those who were placed with adopters only or concurrent carers were adopted within three years.

Please note that some of the cohorts above are based on low number of children.

### Length of time for Best Interest Decision to be reached in the adoption process.

Year	Years: Months
2014/15	1:5
2015/16	1:4
2016/17	1:3
2017/18	1:6
2018/19	1:3

The overall adoption process involves court activity which may contribute to delays in the adoption process. The time up to the Best Interest Decision however reflects the part of the process that is mainly down to the HSC Trusts. As set out in the table, the time from the start of the final period in care to the Trust's decision that adoption is in the best interest for the child was one year three months in 2018/19.

<sup>9</sup> <https://www.health-ni.gov.uk/publications/ministerial-priorities>

Table 4 sets out the average age of the child at different points in the adoption process. In 2018/19, the average age of children at the time of their last admission into care was 1 year 2 months, ranging from the time of birth to 6 years 8 months.

Table 4 Average ages of children at different stages of the adoption process (year ending 31 March)

Stages in the adoption process	Age (year:month)				
	2015	2016	2017	2018	2019
Age at last admission into care	1:0	1:6	1:6	1:1	1:2
Age at Best Interest Proposal	2:1	2:3	2:2	2:1	1:11
Age at Best Interest Decision	2:4	2:9	2:8	2:6	2:5
Age Panel recommended adopters as suitable for child	3:3	3:7	3:8	3:5	3:5
Age Trust accept recommendation that adopters are suitable for child	3:4	3:8	3:9	3:6	3:7
Age placed for adoption	3:5	3:9	3:10	3:7	3:8
Age at Adoption Order	4:1	4:5	4:5	4:2	4:3

Note: Some children may be excluded from calculations due to missing values or dates.

Table 5 Average duration between different stages of the adoption process by age at the start of the last period in care (year ending 31 March)

Age at start of last period of care	Average duration between entry into care and Trust LAC Best Interest Proposal				Average duration between date of Trust LAC Best Interest Proposal and matching of child and adopters				Average duration between date of matching and date placed for adoption				Average duration between date placed for adoption and granting of the Adoption Order				Average duration between last entry into care and adoption			
	2016	2017	2018	2019	2016	2017	2018	2019	2016	2017	2018	2019	2016	2017	2018	2019	2016	2017	2018	2019
Under 1	0:9	0:8	1:2	0:8	1:4	1:5	1:3	1:6	0:1	0:1	0:2	0:1	0:7	0:6	0:7	0:7	2:9	2:7	3:2	2:9
1	0:8	0:10	1:1	0:10	1:11	1:4	1:4	1:11	0:1	0:2	0:1	0:1	0:8	0:7	0:6	0:8	3:3	2:11	3:0	3:6
2	0:10	0:11	0:10	1:0	1:5	2:1	1:11	2:0	0:1	0:2	0:0	0:4	0:10	0:7	0:7	0:6	3:1	3:8	3:5	3:10
3 and over	0:9	0:9	0:6	1:4	1:8	2:2	2:3	1:8	0:1	0:0	0:0	0:3	0:10	0:9	0:7	0:6	3:2	3:7	3:2	3:9
<b>All children</b>	<b>0:9</b>	<b>0:9</b>	<b>1:0</b>	<b>0:10</b>	<b>1:6</b>	<b>1:8</b>	<b>1:6</b>	<b>1:7</b>	<b>0:1</b>	<b>0:1</b>	<b>0:1</b>	<b>0:1</b>	<b>0:8</b>	<b>0:7</b>	<b>0:7</b>	<b>0:7</b>	<b>2:11</b>	<b>3:0</b>	<b>3:2</b>	<b>3:1</b>

The time between different stages of the adoption process may not add to the total time as some cases may be excluded from the in-between calculations.

0:0 is less than 1 month.

Figures have been revised and may differ slightly from previous publications.

## 5. Adoption process by age group

Of the children adopted in 2018/19, almost two thirds (46, 63%) had entered their final period of care when they were under one year of age. Some eleven children (15%) entered the final period of care when they were aged 1, five (7%) when aged two and eleven (15%) were aged 3 or over. Table 5 (above) sets out the adoption process broken down by the age of the child at the time of entering the last period of care.

There was a variance of up to thirteen months for the different age groups of the time between last entry to care and the Adoption Order in 2018/19. As in 2017/18, there was some difference between the duration from LAC Best Interest Proposal and matching of child and adopters. For those under one year when entering care, this took eighteen months. For those aged two, this process took two years. It is however worth noting that the numbers involved are small and care must be taken when making year on year comparisons.

The average duration from the Trust LAC Best Interest Proposal to adoption is set out in Table 6 below by the age of the child at the time of the LAC Best Interest Proposal. This shows that duration for a child aged under one year of age at the time of the LAC Best Interest Proposal is generally shorter than those aged one year and older.

Table 6 Average duration between Trust LAC best interest proposal and adoption by age, year ending 31 March 2019

Age at Trust LAC Best Interest Proposal	Number of Children	Average duration between date of Trust LAC Best Interest Proposal and Adoption
	N	Year : Months
Under 1	29	1:10
1	17	2:5
2	11	2:9
3 and over	16	2:7
All children	73	2:3



## 6. Type of adopters

Recent years have seen a change in the way adoptions are processed prior to the Adoption Order is granted. In general, there are four pathways that can be followed, from the traditional route where a child is placed with approved adopters for the purpose of adoption, to being placed with concurrent carers while the future of the child is being decided<sup>10</sup>. In the latter case, social services will work with birth parents to assess if the child can return to their care, and if the child cannot return safely to their birth family's care (and pending the approval of the courts) then the child goes on to be adopted by the concurrent carers.

Like concurrent carers, dual approved carers are also approved as both foster carers and adopters. Dual approved carers take the placement of a child after the Trust has agreed that the care plan for the child is adoption but prior to the court's decision whether to free the child for adoption. So in this instance the child is also initially placed on a fostering basis. Both the options above reduces the time it will take to reach the Adoption Order and as such, permanency and stability for the child will potentially be achieved at an earlier stage. Finally, children who are adopted from care can be placed on a fostering basis with foster carers or kinship foster carers. When the child's care plan changes to adoption, the foster carers, at that point, seek to become approved adopters to enable them to provide permanence for that specific child.

In each of the last three years the Adopters Only pathway accounted for around a tenth of all adoptions from care. In comparison, over the same period of time, most children have been adopted through the Dual Approved Carers pathway.

Table 7 Type of adoptions / pathways to adoption (year ending 31 March)

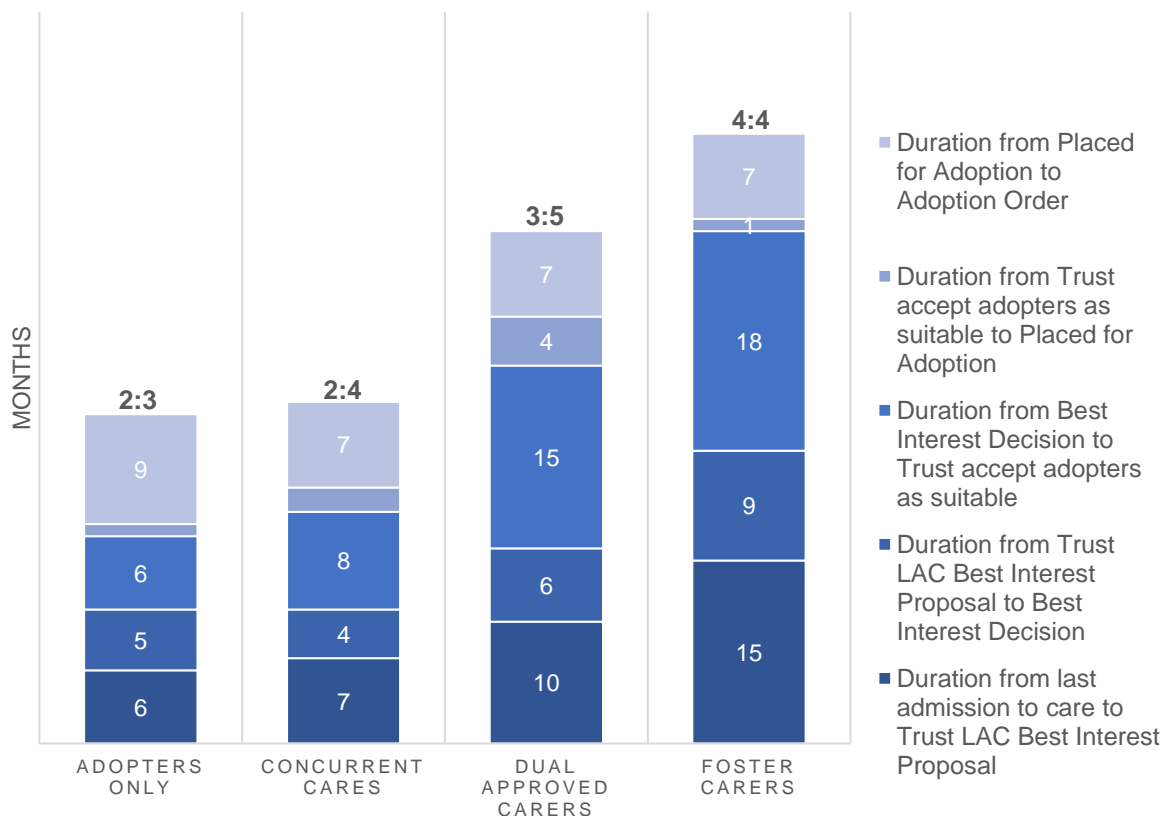
Type of adopters	Description	2017	2018	2019
<b>Adopters Only</b>	The child is placed with approved adopters for the purpose of adoption after Freeing Order has been granted by the courts.	12 (10%)	6 (7%)	7 (10%)
<b>Concurrent Carers</b>	The child is placed with carers who are approved as foster carers and adopters while the future of the child is still being decided. Social services will work simultaneously with the birth parents and the prospective adopters. The primary plan is for the child to return home, but if this is not possible, the carers adopt the child.	23 (19%)	26 (31%)	26 (36%)
<b>Dual Approved Carers</b>	The carers are both approved as foster carers and adopters. The child is placed with the dual approved carers after Best Interest Decision is made by the Trust, and the carers act as the child's foster carers up until the point when the child's legal status is changed to 'placed for adoption'.	67 (56%)	29 (35%)	27 (37%)
<b>Former Foster Carers</b>	The child is initially placed in foster care and foster carers, who subsequently become approved as adopters for the child, go on to adopt the child.	18 (15%)	23 (27%)	13 (18%)
<b>All adoptions</b>		<b>120 (100%)</b>	<b>84 (100%)</b>	<b>73 (100%)</b>

<sup>10</sup> The distinction between these four types of carers/adoption pathways was included in these returns for the first time in 2016/17.

The choice of the kind of carers the child is placed with will depend on the child's unique circumstances. For a child to be placed with concurrent carers, it must be identified that there is likelihood, based on past history that the child may not be able to safely return home to the care of birth family. However the birth parents are afforded an opportunity to engage with service to demonstrate their parenting capacity and have their child returned. Another child may be placed in foster care, however the pathway of adoption may not be relevant for the child until sometime down the line. Because of these differences, it is expected that the time from a child's last entry into care to the Adoption Order will differ between the four adoption routes, though the emphasis must be on achieving permanence whether that is through a return home to birth family or adoption as early as possible.

As can be seen from Table 8 and Figure 4 below, average duration from entering care to Trust LAC Best Interest Proposal was considerably longer for those initially placed with foster carers. Furthermore, average duration from entering care to the granting of Adoption Order was considerably shorter for those placed with adopters only and those placed with concurrent carers.

Figure 4 Average durations between different stages of the adoption process by type of adopters, year ending 31 March 2019



Note: Some children may be excluded from calculations due to missing values or dates. Number above each column refers to year:month

Table 8 Average durations between different stages of the adoption process by type of adopters (year ending 31 March 2019)

Stages in the adoption process	Type of adopters				All adoptions
	Adopters Only	Concurrent Carers	Dual Approved Carers	Foster Carers	
Duration from last admission to care to Trust LAC Best Interest Proposal	0:6	0:7	0:10	1:3	<b>0:10</b>
Duration from Trust LAC Best Interest Proposal to Best Interest Decision	0:5	0:4	0:6	0:9	<b>0:6</b>
Duration from Best Interest Decision to Panel recommend adopters as suitable for this child	0:6	0:8	1:3	1:7	<b>1:0</b>
Duration from Panel recommend adopters as suitable for this child to Trust accept adopters as suitable	0:0	0:2	0:1	0:1	<b>0:1</b>
Duration from Trust accept adopters as suitable to Placed for Adoption	0:1	0:0	0:3	0:1	<b>0:1</b>
Duration from Placed for Adoption to Adoption Order	0:9	0:7	0:7	0:7	<b>0:7</b>
<b>Last admission to care to Adoption Order</b>	<b>2:3</b>	<b>2:4</b>	<b>3:5</b>	<b>4:4</b>	<b>3:1</b>

Note: Some children may be excluded from calculations due to missing values or dates.

It is expected that children in the four adoption routes may relate to somewhat different cohorts when looking at the age of the child at different stages of the adoption process. As can be seen in Table 9, children adopted by adopters only and concurrent carers were on average younger, at the time of the granting of the Adoption Order.

Table 9 Average ages of children at different stages of the adoption process by type of adopters (year ending 31 March 2019)

	Type of adopters				All adoptions
	Adopters Only	Concurrent Carers	Dual Approved Carers	Foster Carers	
Age at last admission into care	0:8	0:8	1:5	1:10	<b>1:2</b>
Age at Best Interest Proposal	1:2	1:4	2:3	3:1	<b>1:11</b>
Age at Best Interest Decision	1:7	1:8	2:8	3:10	<b>2:5</b>
Age Panel recommended adopters as suitable for child	2:1	2:4	3:11	5:5	<b>3:5</b>
Age Trust accept recommendation that adopters are suitable for child	2:2	2:5	4:1	5:6	<b>3:7</b>
Age placed for adoption	2:2	2:6	4:4	5:7	<b>3:8</b>
Age at Adoption Order	2:11	3:0	4:10	6:2	<b>4:3</b>

Note: Some children may be excluded from calculations due to missing values or dates.

## 7. UK adoption statistics comparison

There is no common legislative framework operating across the United Kingdom relating to adoption, hence any statistics showing data for the four jurisdictions will not necessarily provide like-for-like comparisons. Bearing this in mind, Table 10, below, sets out some of the statistics published in Northern Ireland, England and Wales<sup>11</sup>.

Table 10 Adoption statistics for Northern Ireland, England and Wales (year ending 31 March)

	Northern Ireland (2018/19)	England (2017/18)	Wales (2017/18)
<b>All children adopted</b>	<b>73</b>	<b>3,820</b>	<b>308</b>
Adoptions per 1,000 children in care at 31 March	22	51	48
<b>Age at adoption</b>			
Under 1	0%	8%	-
1-4	66%	70%	81%
5-9	35%	20%	18%
10-15		2%	-
16+	0%	0%	-
<b>Average age at adoption (yrs:months)</b>	<b>4:3</b>	<b>3:3</b>	<b>3:4</b>
<b>Average duration of last period of care (yrs:months)</b>	<b>3:1</b>	<b>1:11</b>	<b>2:2</b>

' - ' indicates that information is not available

Source: AD1 returns, Children adopted from care in Northern Ireland, DoH

Source: Children looked after in England (including adoption) year ending 31 March 2018

Source: Children looked after by local authorities in Wales 2017/18

Note: there is no common legislative framework operating across the United Kingdom relating to adoption, hence any statistics will not necessarily provide like-for-like comparisons.

In general, children adopted from care in Northern Ireland were on average older and had spent longer time in care than that of children adopted from care in England and Wales.

Around a fifth of children adopted from care in both England and Wales were aged five or over at the time of adoption. This compares with over a third of children in Northern Ireland.

The average duration from last entry into care to the granting of the adoption order was one year 11 months in England and two years two months in Wales. In Northern Ireland the average duration was three years one month.

<sup>11</sup> Figures for England and Wales are the latest available at time of publication.

# Appendix A – Technical Notes

## **Data Collection**

The figures for “Children adopted from care in Northern Ireland 2018/19” are derived from the twelfth ‘AD1’ survey of children adopted from care in Northern Ireland. The AD1 survey return was provided by each of the five Health and Social Care Trusts in Northern Ireland to Community Information Branch (CIB) within the Department of Health (DoH).

The AD1 survey was introduced in 2004, and its primary aim is to monitor the numbers of children adopted from care and the timescales between different stages in the adoption process. It is an individual level survey, with one record for each young person fitting the parameters for the collection. Returns are completed online by nominated HSC Trust staff using a secure web-based application. Records are anonymised to protect the confidentiality of the young people whose details are included in the return.

Guidance notes and other documents associated with the completion of the AD1 survey are available to view or download from the DoH [website](#).

## **Methodology**

The adoption process is set out in stages, where one event, recommendation or decision would naturally follow the next. However, with the focus on improving the timing of the somewhat lengthy adoption process, the natural order of the events may not be followed. This may cause, when calculating duration between different stages of the adoption process, a 'negative' duration to be calculated. This mainly relates to the LAC Best Interest Proposal occurring prior to last entry into care.

Historically, within the AD1 calculations, these negative values have been excluded from analysis (eg the value has been treated as 'missing'). However, as the negative value may be a reflection of efficiency and improved service, it may be considered unfair not to include them in overall performance evaluations. The methodology was therefore revised.

As a result, negative values are treated as the value '0' and are included in calculations. This means that, for the example above, where the Best Interest Proposal was agreed prior to the last entry to care, is in the calculations interpreted as if no time passed between the child entered its last period of care and the LAC Best Interest Proposal was in place (time = 0 months).

All time series included in this publication have been revised using this methodology.

## **Format of historic figures**

Any historic figure including '12 months' has been changed to the format of '1 year'. For example '0:12' is now displayed as '1:0' and '2:12' is displayed as '3:0'.

## **Missing dates and Rounding**

Some children may not have all the key dates referred to in this publication. For example, children adopted from care with parental consent (Article 16) may not have a LAC Best Interest Proposal date. Children with missing dates will be excluded from analysis involving those specific dates but included in all other calculation. The total number of children included in each stage of the adoption process may therefore vary. Furthermore, due to missing dates, summing average durations between key dates may give a

different result when the same duration is calculated directly without using intervening dates. These differences may be further compounded through rounding errors.

### **Data Quality**

All information submitted by HSC Trusts was validated at the point of entry, where Trust staff correct or amend data as required, and provide appropriate explanations if information is missing. AD1 returns are checked and quality assured by HSC Trust managers before being submitted to CIB within the DoH. CIB perform further checks, using historical data to monitor annual variations and emerging trends.

A detailed quality report for the AD1 survey statistics is available on the DoH website <https://www.health-ni.gov.uk/publications/children-adopted-care-return-and-quality-report> .

### **Main Uses of Data**

The main uses of these data are to monitor the delivery of social care services to children, to help assess Trust performance, corporate monitoring, to inform and monitor related policy, and to respond to parliamentary/assembly questions. The bulletin is also used by academics/ researchers, the voluntary sector and those with an interest in children in care.

### **A National Statistics Publication**

National Statistics status means that official statistics meet the highest standards of trustworthiness, quality and public value.

All official statistics should comply with all aspects of the Code of Practice for Official Statistics. They are awarded National Statistics status following an assessment by the Authority's regulatory arm. The Authority considers whether the statistics meet the highest standards of Code compliance, including the value they add to public decisions and debate.

It is the Department of Health's responsibility to maintain compliance with the standards expected of National Statistics. If we become concerned about whether these statistics are still meeting the appropriate standards, we will discuss any concerns with the Authority promptly. National Statistics status can be removed at any point when the highest standards are not maintained, and reinstated when standards are restored.

These statistics were designated as National Statistics in November 2013 following a full [assessment](#) against the [Code of Practice](#).

If you have any comments on this publication, please contact Community Information Branch on Email: [cib@health-ni.gov.uk](mailto:cib@health-ni.gov.uk) or Tel: 028 90522580

### **Related Publications**

Statistics on all children adopted in Northern Ireland (from care and not from care) can be sourced from the Northern Ireland Guardian Ad Litem Agency annual reports.

<http://www.nigala.hscni.net/publications.htm>

Details of statistics on children adopted from care published by other countries within the UK (United Kingdom) can be found as detailed below.

### *England*

Statistics on 'Children looked after in England' (including adoption and care leavers) are produced annually by the Department for Education. Figures for the year ending 31 March 2018 are available at:

<https://www.gov.uk/government/statistics/children-looked-after-in-england-including-adoption-2017-to-2018>

### *Wales*

Statistics on Children Looked After by Local Authorities are produced annually by the Welsh Assembly Government. Figures for the year ending 31 March 2018 are available through the link below:

<https://gweddill.gov.wales/statistics-and-research/children-looked-after-local-authorities/?lang=en>

### *Scotland*

'Children's Social Work Statistics Scotland' is published on an annual basis by the Scottish Government, with the latest published figures relating to year ending 31 July 2018. Figures relating to adoption can be found in the additional tables at the following link:

<https://www2.gov.scot/Topics/Statistics/Browse/Children/PubChildrenSocialWork>

# Appendix B - Additional Tables

Table 11 Number of Children adopted from Care in Northern Ireland (year ending 31 March)

Year	Number of children adopted from care
2000	54
2001	99
2002	104
2003	109
2004	79
2005	88
2006	56
2007	60
2008	64
2009	57
2010	50
2011	55
2012	60
2013	88
2014	89
2015	72
2016	89
2017	120
2018	84
2019	73

Source for years 2000 and 2001: *Adopting Best Care*, Social Services Inspectorate, DHSSPS May 2002

Source from 2003: AD1 Returns, DoH <https://www.health-ni.gov.uk/articles/children-adopted-care>

Note: Number of adoptions has been estimated for the years 2002, 2007, 2009 and 2011.



Table 12 Number of Children adopted from Care in Northern Ireland by HSC Trust (year ending 31 March)

HSC Trust	2015	2016	2017	2018	2019
	N	N	N	N	N
<b>Belfast</b>	19	13	23	12	22
<b>Northern</b>	12	31	40	15	16
<b>South Eastern</b>	13	10	17	22	9
<b>Southern</b>	20	19	15	16	8
<b>Western</b>	8	16	25	19	18
<b>Northern Ireland</b>	<b>72</b>	<b>89</b>	<b>120</b>	<b>84</b>	<b>73</b>

**This statistical bulletin** and other statistical bulletins published by Community Information Branch (CIB) are available to download from the internet at:

<https://www.health-ni.gov.uk/topics/dhssps-statistics-and-research-social-services/social-care-statistics>

**For further information** on children adopted from care in Northern Ireland please contact:

**Community Information Branch**

Department of Health  
Annexe 2  
Castle Buildings  
Stormont, Belfast  
BT4 3SQ

Email: [cib@health-ni.gov.uk](mailto:cib@health-ni.gov.uk)



028 9052 2580