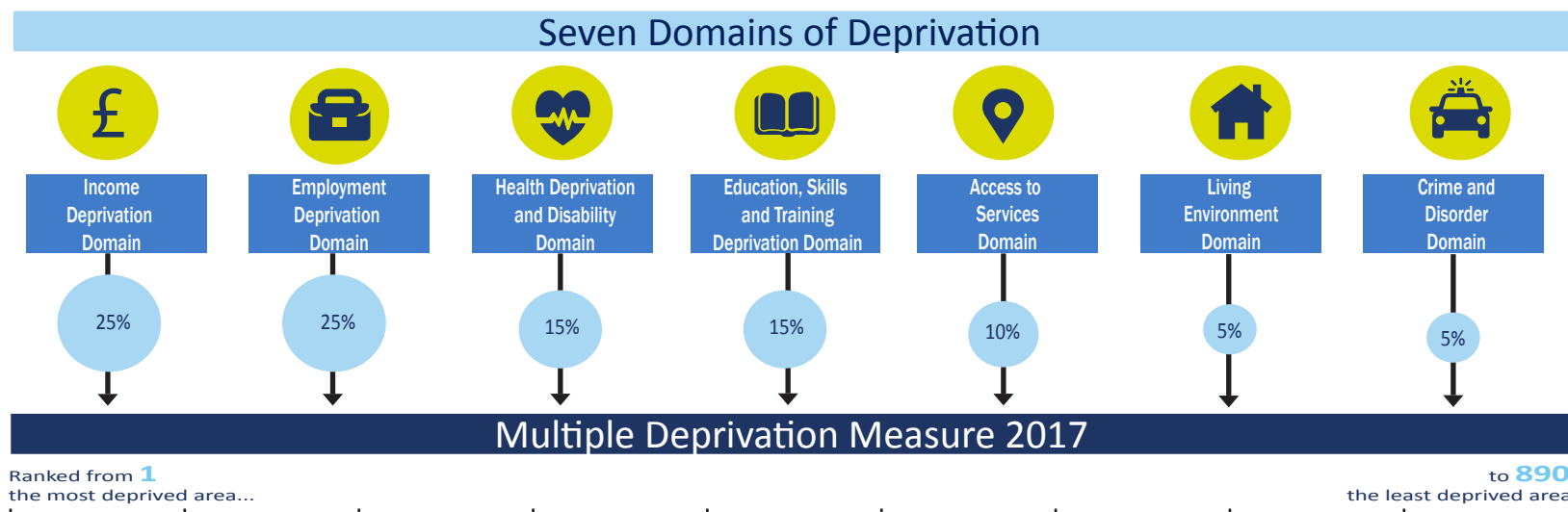


# Northern Ireland Multiple Deprivation Measures 2017



What the NIMDM 2017 **can** be used for

For each of the **individual domains** of deprivation and the **overall MDM**, the rankings can be used to:

- ✓ Explore the relative deprivation of small geographical areas by comparing them with each other
- ✓ Explore which small geographical areas are the most or least deprived
- ✓ Examine the spatial distribution of small geographical areas that are the most or least deprived, however defined
- ✓ Explore which small geographical areas have joined, left or remained in the most or least deprived areas over time

This can be done for Northern Ireland as a whole, or for each individual Local Government District or for other large geographies

What the NIMDM 2017 **cannot** be used for

- ✗ Identifying deprived individuals or groups of people – these are **area based** spatial measures
- ✗ Quantifying the extent to which a small geographical area is deprived- they provide **relative** rankings of areas
- ✗ Quantifying the extent to which one area is more or less deprived than another – they provide **relative** rankings of areas
- ✗ Assessing how absolute deprivation in a small geographical area has changed over time – they provide a **spatial ranking** at a **single point in time**
- ✗ Measuring affluence – lack of deprivation is not the same as being affluent
- ✗ Undertaking UK comparisons – each UK country has a different set of indicators, time periods, domains and domain weights.

## Most deprived SOAs within ANTRIM AND NEWTOWNABBEY LGD



## INCOME

## Rank

116	Dunanney
148	Coole
194	Whitehouse
208	Monkstown 1
245	Carnmoney 1
272	Valley 2
312	Glengormley 2
313	Ballycraigy
329	Farranshane
370	Fountain Hill



## EMPLOYMENT

## Rank

87	Dunanney
90	Coole
102	Whitehouse
123	Monkstown 1
143	Carnmoney 1
158	Farranshane
179	Valley 2
181	Glengormley 2
182	Mossley 2
220	Greystone



## HEALTH AND DISABILITY

## Rank

92	Dunanney
107	Coole
112	Monkstown 1
117	Mossley 2
123	Whitehouse
136	Glengormley 2
148	Farranshane
166	Ballycraigy
170	Carnmoney 1
174	Valley 2



## EDUCATION, SKILLS AND TRAINING

## Rank

38	Mossley 2
43	Dunanney
55	Monkstown 1
69	Carnmoney 1
71	Coole
75	Valley 2
76	Steeple
86	Glengormley 2
89	Springfarm 2
111	Whitehouse



## ACCESS TO SERVICES

## Rank

17	Aldergrove 1
19	Shilvodan
74	Ballynure 1
82	Clady
84	Parkgate
131	Toome
144	Cranfield
150	Aldergrove 3
158	Aldergrove 2
201	Drumanaway



## LIVING ENVIRONMENT

## Rank

75	Aldergrove 1
125	Hightown
140	Ballyhenry 1
160	Monkstown 1
184	Collinbridge 2
196	Glengormley 1
206	Mallusk 3
207	Ballynure 1
214	Toome
224	Carnmoney 2



## CRIME AND DISORDER

## Rank

32	Greystone
77	Farranshane
124	Glengormley 1
149	Balloo
151	Valley 1
153	Massereene 1
166	Ballycraigy
170	Valley 2
174	Hightown
189	Stiles

## MDM

## MULTIPLE DEPRIVATION

## Rank

84	Dunanney
103	Coole
117	Monkstown 1
135	Whitehouse
165	Carnmoney 1
178	Farranshane
184	Valley 2
193	Mossley 2
195	Glengormley 2
247	Springfarm 2

For each domain, as well as the overall multiple measure the 890 SOAs in NI are ranked from 1 (most deprived) to 890 (least deprived)

## Most deprived SOAs within ARMAGH CITY, BANBRIDGE AND CRAIGAVON LGD

**INCOME****Rank**

9	Woodville 1
17	Church
19	Annagh 2
22	Keady
38	Callan Bridge
46	Derrynoose
86	Corcrair 2
93	Carrigatuke
100	Corcrair 1
105	Court 1

**EMPLOYMENT****Rank**

42	Drumnamoe 1
59	Woodville 1
67	Drumgask 2
69	Court 1
92	Court 2
98	Callan Bridge
107	Drumgor 2
119	The Cut
147	Corcrair 1
170	Edenderry

**HEALTH AND DISABILITY****Rank**

31	Drumnamoe 1
42	Drumgask 2
64	Drumgor 2
67	Court 1
91	Woodville 1
100	Court 2
121	Callan Bridge
124	Drumgask 1
130	The Cut
145	Edenderry

**EDUCATION, SKILLS AND TRAINING****Rank**

21	Woodville 1
24	Drumgask 2
33	Church
37	Drumgor 2
62	Drumnamoe 1
68	Court 1
81	Corcrair 2
82	Ballybay
93	Tavanagh
97	Callan Bridge

**ACCESS TO SERVICES****Rank**

18	Bannside
33	Katesbridge
54	Derrynoose
64	Gransha
73	Derrytrasna 2
89	Killylea
96	The Birches 2
98	Quilly
100	Carrigatuke
101	Poyntz Pass

**LIVING ENVIRONMENT****Rank**

10	Woodville 1
15	Annagh 2
58	Court 1
69	The Cut
70	Corcrair 2
83	The Mall
92	Callan Bridge
146	Drumnamoe 1
151	Carrigatuke
163	Milford

**CRIME AND DISORDER****Rank**

7	Court 1
15	The Cut
26	Drumgor 2
27	Woodville 1
42	Annagh 2
69	Callan Bridge
97	Court 2
104	Church
125	Drumgor 1
132	Edenderry

**MDM****MULTIPLE DEPRIVATION****Rank**

14	Woodville 1
52	Drumgask 2
54	Court 1
61	Callan Bridge
62	Church
73	Annagh 2
81	Drumgor 2
83	Drumnamoe 1
108	Corcrair 2
120	The Cut

*For each domain, as well as the overall multiple measure the 890 SOAs in NI are ranked from 1 (most deprived) to 890 (least deprived).*

## Most deprived SOAs within ARDS AND NORTH DOWN LGD



## INCOME

## Rank

41	Scrabo 2
62	Central
75	Glen 1
95	Conlig 3
121	Clandeboyne 1
150	Gregstown 1
155	Loughview 1
168	Kircubbin 2
173	Harbour 1
178	Whitehill



## EMPLOYMENT

## Rank

83	Scrabo 2
103	Portaferry 2
148	Central
161	Donaghadee South 1
167	Glen 1
180	Ballyrainey
192	Conlig 3
202	Harbour 1
206	Ballywalter 1
218	Portavogie 1



## HEALTH AND DISABILITY

## Rank

86	Conlig 3
139	Portaferry 2
159	Central
162	Scrabo 2
173	Glen 1
219	Dufferin
220	Comber North 1
249	Donaghadee South 1
261	Ballyrainey
270	Loughview 1



## EDUCATION, SKILLS AND TRAINING

## Rank

45	Glen 1
59	Comber North 1
79	Scrabo 2
107	Central
116	Scrabo 1
124	Clandeboyne 3
133	Loughview 2
134	Whitehill
163	Donaghadee South 1
169	Gregstown 2



## ACCESS TO SERVICES

## Rank

35	Killinchy 1
103	Kircubbin 1
109	Killinchy 2
120	Carrowdore 1
133	Portaferry 1
151	Lisbane 1
152	Carrowdore 2
157	Portavogie 2
187	Ballywalter 2
203	Portavogie 1



## LIVING ENVIRONMENT

## Rank

21	Harbour 1
43	Cultra
47	Bryansburn 1
60	Killinchy 1
64	Harbour 2
91	Hollywood Demesne
139	Lisbane 2
144	Bradshaw's Brae 2
189	Ballyholme
191	Ballymaconnell 1



## CRIME AND DISORDER

## Rank

6	Harbour 1
55	Central
115	Bradshaw's Brae 1
121	Comber East 1
127	Donaghadee North 1
138	Glen 1
140	Clandeboyne 2
147	Bloomfield 1
172	Conlig 3
178	Harbour 2

## MDM

## MULTIPLE DEPRIVATION

## Rank

71	Scrabo 2
97	Glen 1
99	Central
134	Conlig 3
174	Harbour 1
199	Donaghadee South 1
219	Portaferry 2
223	Ballywalter 1
225	Portavogie 1
231	Scrabo 1

*For each domain, as well as the overall multiple measure the 890 SOAs in NI are ranked from 1 (most deprived) to 890 (least deprived).*

## Most deprived SOAs within BELFAST LGD



## INCOME

## Rank

7	Woodvale 1
8	Ardoyne 2
12	Woodvale 3
23	Water Works 2
27	Woodvale 2
29	Ardoyne 1
30	Crumlin 2
34	Crumlin 1
35	Blackstaff 1
44	Duncairn 2



## EMPLOYMENT

## Rank

1	New Lodge 2
2	Water Works 2
8	Whiterock 2
9	New Lodge 1
11	Collin Glen 2
12	Ardoyne 3
15	Ardoyne 2
17	Whiterock 3
18	Water Works 1
19	Ardoyne 1



## HEALTH AND DISABILITY

## Rank

1	Whiterock 2
2	Collin Glen 2
3	New Lodge 2
4	Water Works 2
5	Whiterock 3
6	Ardoyne 3
7	Falls 2
8	Water Works 1
10	New Lodge 1
11	Falls 3



## EDUCATION, SKILLS AND TRAINING

## Rank

1	New Lodge 3
2	Woodvale 1
3	Woodvale 2
4	Shankill 2
5	Whiterock 2
6	The Mount 2
7	Shankill 1
8	The Mount 1
9	Falls 2
10	Crumlin 2



## ACCESS TO SERVICES

## Rank

278	Collin Glen 1
306	Derryagh 1
314	Highfield 1
326	Legoniel 1
332	Glencairn 1
334	Stormont 1
355	Glencolin 1
415	Upper Malone 1
434	Island 1
441	Cavehill 3



## LIVING ENVIRONMENT

## Rank

1	Botanic 2
2	Botanic 1
3	Windsor 3
4	Beechmount 1
5	Windsor 4
6	Malone 3
7	Water Works 3
8	Blackstaff 1
11	Botanic 3
12	Chichester Park 1



## CRIME AND DISORDER

## Rank

2	Falls 2
3	Shankill 2
4	Botanic 3
5	Water Works 3
9	Falls 3
11	Botanic 2
13	Botanic 5
14	Clonard 2
16	Ardoyne 3
17	The Mount 1

## MDM

## MULTIPLE DEPRIVATION

## Rank

2	Water Works 2
4	Ardoyne 2
7	New Lodge 2
8	Woodvale 1
9	Ardoyne 3
12	Woodvale 2
15	Water Works 1
16	Ardoyne 1
17	Woodvale 3
18	Shankill 2

For each domain, as well as the overall multiple measure the 890 SOAs in NI are ranked from 1 (most deprived) to 890 (least deprived)

## Most deprived SOAs within CAUSEWAY COAST AND GLENS LGD

**INCOME****Rank**

6	Ballysally 1
25	Glentaisie & Kinbane
32	Royal Portrush
33	Greystone
39	Dungiven
53	Feeny
57	The Highlands
59	Ballylough & Bushmills
60	Coolessan
71	Garvagh

**EMPLOYMENT****Rank**

5	Greystone
23	Coolessan
38	Ballysally 1
94	Roeside
97	Enagh 2
132	Route
136	Cross Glebe
139	Churchland
140	Royal Portrush
151	Dungiven

**HEALTH AND DISABILITY****Rank**

48	Coolessan
51	Greystone
94	Ballysally 1
120	Enagh 2
171	Churchland
184	Cross Glebe
193	Ballysally 2
214	Roeside
222	Central
241	Dungiven

**EDUCATION, SKILLS AND TRAINING****Rank**

42	Greystone
67	Coolessan
103	Ballysally 2
114	Ballysally 1
139	Cross Glebe
147	Ballylough & Bushmills
149	Churchland
172	Newhill
173	Enagh 2
188	University

**ACCESS TO SERVICES****Rank**

12	Glack
13	Ballyhoe and Corkey
25	Magilligan
38	Carnmoon & Dunserverick
51	Ringsend
55	Armoy & Moss-side and Moyarget
58	The Vow
63	The Highlands
68	Dunloy
70	Knockaholet

**LIVING ENVIRONMENT****Rank**

26	Central
62	Dundooan 1
86	Knockaholet
99	Carnmoon & Dunserverick
101	Roeside
105	Dervock
113	Strand 1
123	Aghanloo 2
156	Rathbrady
186	Agivey

**CRIME AND DISORDER****Rank**

12	Greystone
18	Royal Portrush
20	Coolessan
36	Central
40	Portstewart
47	Enagh 2
72	Atlantic
81	Roeside
93	Ballysally 1
152	Churchland

**MDM****MULTIPLE DEPRIVATION****Rank**

11	Greystone
31	Ballysally 1
34	Coolessan
105	Royal Portrush
124	Glentaisie & Kinbane
127	Enagh 2
137	Central
145	Dungiven
157	Cross Glebe
160	Ballysally 2

*For each domain, as well as the overall multiple measure the 890 SOAs in NI are ranked from 1 (most deprived) to 890 (least deprived)*

## Most deprived SOAs within DERRY CITY AND STRABANE LGD



## INCOME

## Rank

4	East
10	Strand 1
11	The Diamond
15	Crevagh 2
16	Shantallow West 2
18	Brandywell
20	Creggan Central 1
24	Ebrington 2
26	Ballycolman
40	Shantallow West 3



## EMPLOYMENT

## Rank

3	East
4	Strand 1
6	The Diamond
7	Shantallow West 1
10	Crevagh 2
13	Brandywell
14	Creggan South
16	Creggan Central 1
22	Culmore 2
24	Clondermot 1



## HEALTH AND DISABILITY

## Rank

9	Crevagh 2
13	Shantallow West 1
22	Culmore 2
23	Creggan Central 1
32	Brandywell
35	Creggan South
36	Strand 1
44	The Diamond
45	Clondermot 1
46	Shantallow West 2



## EDUCATION, SKILLS AND TRAINING

## Rank

14	East
31	Creggan Central 1
32	Crevagh 2
57	Creggan South
64	Culmore 2
85	Altnagelvin 1
87	Shantallow West 1
92	Ballycolman
98	Brandywell
108	Shantallow West 2



## ACCESS TO SERVICES

## Rank

1	Plumbridge
21	Dunnamanagh
23	Glenderg
32	Claudy 2
41	Banagher
52	Slievekirk
60	Clare
114	Victoria Bridge
162	Newtownstewart
165	Culmore 1



## LIVING ENVIRONMENT

## Rank

9	Strand 1
18	Ebrington 2
22	Strand 2
37	Pennyburn 1
42	The Diamond
50	Rosemount
82	Creggan Central 1
95	Culmore 2
110	Westland
117	Shantallow East



## CRIME AND DISORDER

## Rank

1	The Diamond
10	Strand 1
19	Shantallow West 1
24	Pennyburn 1
28	Crevagh 2
29	Shantallow West 2
30	Culmore 2
33	Ebrington 2
44	Rosemount
50	Brandywell

## MDM

## MULTIPLE DEPRIVATION

## Rank

1	East
3	Crevagh 2
5	Strand 1
6	The Diamond
10	Creggan Central 1
13	Brandywell
19	Shantallow West 1
22	Culmore 2
27	Shantallow West 2
33	Creggan South

For each domain, as well as the overall multiple measure the 890 SOAs in NI are ranked from 1 (most deprived) to 890 (least deprived)

## Most deprived SOAs within FERMANAGH AND OMAGH LGD



## INCOME

## Rank

14	Rosslea
21	Lisanelly 1
28	Devenish
31	Newtownbutler
37	Belleek and Boa
61	Lisanelly 2
69	Donagh
74	Irvinestown
99	Fintona
114	Portora



## EMPLOYMENT

## Rank

52	Lisanelly 1
55	Lisanelly 2
62	Devenish
101	Strule
112	Gortrush 2
126	Fintona
164	Lisnaskea
168	Irvinestown
169	Camowen
175	Erne



## HEALTH AND DISABILITY

## Rank

24	Lisanelly 2
69	Devenish
84	Lisanelly 1
97	Gortrush 2
126	Strule
147	Camowen
172	Killyclogher 1
181	Fintona
200	Erne
201	Drumragh



## EDUCATION, SKILLS AND TRAINING

## Rank

140	Lisanelly 2
153	Devenish
187	Lisanelly 1
193	Gortrush 2
202	Castlecoole 1
205	Erne
229	Lisnaskea
231	Strule
316	Irvinestown
331	Kesh Ederney and Lack 1



## ACCESS TO SERVICES

## Rank

2	Belcoo and Garrison
5	Rosslea
7	Trillick
8	Sixmilecross
9	Owenkillew
11	Florence Court and Kinawley
14	Belleek and Boa
15	Fairy Water
16	Donagh
20	Clanabogan



## LIVING ENVIRONMENT

## Rank

88	Trillick
115	Drumragh
119	Devenish
124	Sixmilecross
138	Lisanelly 1
149	Lisnarrick
153	Brookeborough
172	Beragh
182	Belcoo and Garrison
193	Termon



## CRIME AND DISORDER

## Rank

38	Portora
59	Devenish
62	Erne
95	Dergmoney
113	Lisanelly 2
168	Drumragh
179	Lisnaskea
208	Irvinestown
222	Lisanelly 1
235	Strule

## MDM

## MULTIPLE DEPRIVATION

## Rank

44	Devenish
46	Lisanelly 2
47	Lisanelly 1
112	Newtownbutler
114	Rosslea
138	Fintona
143	Irvinestown
151	Belleek and Boa
168	Strule
182	Lisnaskea

For each domain, as well as the overall multiple measure the 890 SOAs in NI are ranked from 1 (most deprived) to 890 (least deprived)



## Most deprived SOAs within LISBURN AND CASTLEREAGH LGD



## INCOME

## Rank

92	Hilden 2
137	Old Warren
164	Hilden 1
278	Lagan Valley 1
382	Lagan Valley 2
396	Tonagh
428	Graham's Bridge
452	Lambeg 2
475	Ballymacoss 1
480	Hillhall 2



## EMPLOYMENT

## Rank

162	Old Warren
183	Hillhall 1
230	Lagan Valley 1
252	Tonagh
254	Lagan Valley 2
284	Ballymacoss 1
289	Hilden 2
296	Hilden 1
317	Seymour Hill
322	Enler



## HEALTH AND DISABILITY

## Rank

93	Old Warren
180	Enler
195	Hillhall 1
197	Ballymacoss 1
218	Lagan Valley 1
232	Tonagh
237	Knockmore 2
260	Graham's Bridge
292	Lagan Valley 2
296	Hilden 2



## EDUCATION, SKILLS AND TRAINING

## Rank

84	Old Warren
90	Lambeg 2
119	Hilden 1
122	Hillhall 1
130	Enler
137	Lagan Valley 1
180	Tonagh
181	Hilden 2
185	Knockmore 2
197	Graham's Bridge



## ACCESS TO SERVICES

## Rank

45	Ballinderry 1
56	Ballymacbrennan 2
86	Ballymacbrennan 1
87	Glenavy 2
136	Maze 2
164	Drumbo 2
169	Dromara 2
172	Moneyreagh 1
175	Maghaberry 2
182	Ballinderry 2



## LIVING ENVIRONMENT

## Rank

49	Hilden 1
52	Ballymacbrennan 2
53	Drumbo 1
72	Ballymacash 1
104	Wallace Park 1
145	Ballymacbrennan 1
158	Tonagh
164	Ballymacash 2
174	Cairnshill 2
211	Maghaberry 1



## CRIME AND DISORDER

## Rank

78	Lagan Valley 2
99	Hilden 1
171	Old Warren
180	Tonagh
216	Blaris 1
262	Lambeg 1
297	Knockmore 2
310	Hilden 2
330	Ballymacoss 1
346	Ballymacash 1

## MDM

## MULTIPLE DEPRIVATION

## Rank

118	Old Warren
190	Hilden 1
202	Hilden 2
246	Lagan Valley 1
277	Hillhall 1
282	Tonagh
346	Knockmore 2
359	Lambeg 2
361	Ballymacoss 1
371	Enler

For each domain, as well as the overall multiple measure the 890 SOAs in NI are ranked from 1 (most deprived) to 890 (least deprived)

## Most deprived SOAs within MID AND EAST ANTRIM LGD



## INCOME

## Rank

50	Northland
55	Ballykeel
70	Ballyloran
90	Moat
126	Fair Green
146	Ballee
154	Portglenone 2
171	Castle Demesne
181	Dunclug
206	Town Parks



## EMPLOYMENT

## Rank

85	Ballee
95	Love Lane
99	Moat
104	Craig Hill
117	Antiville
129	Ballyloran
135	Northland
144	Ballykeel
166	Central
171	Sunnylands



## HEALTH AND DISABILITY

## Rank

98	Northland
103	Ballee
127	Moat
134	Love Lane
141	Ballyloran
156	Craig Hill
163	Sunnylands
177	Dunclug
187	Ballykeel
190	Clipperstown



## EDUCATION, SKILLS AND TRAINING

## Rank

13	Northland
41	Ballee
54	Love Lane
83	Sunnylands
94	Castle Demesne
95	Moat
96	Dunclug
145	Craig Hill
148	Killycrot
150	Ballyloran



## ACCESS TO SERVICES

## Rank

3	Glenarm
34	Slemish
49	Grange
69	Island Magee
71	Glenwhirry
92	Glenravel
99	Kilwaughter 2
115	Carnlough
121	Dunminning
122	Ballycarry



## LIVING ENVIRONMENT

## Rank

16	Glenarm
36	Central
51	Island Magee
71	Park
80	Town Parks
84	Craigwarren
106	Harryville
112	Dunminning
120	Castle Demesne
126	Kilwaughter 2



## CRIME AND DISORDER

## Rank

41	Central
52	Castle Demesne
61	Harryville
79	Moat
89	Dunclug
106	Ballee
110	Killycrot
118	Antiville
157	Love Lane
158	Ballyloran

## MDM

## MULTIPLE DEPRIVATION

## Rank

65	Northland
85	Ballee
91	Moat
104	Ballyloran
110	Ballykeel
154	Dunclug
156	Antiville
173	Love Lane
183	Castle Demesne
192	Central

*For each domain, as well as the overall multiple measure the 890 SOAs in NI are ranked from 1 (most deprived) to 890 (least deprived)*

## Most deprived SOAs within MID ULSTER LGD



## INCOME

## Rank

68	Pomeroy
76	Coalisland South
113	Ballygawley
163	Maghera
183	Aughnacloy
198	Donaghmore
205	Oaklands
207	Upperlands
214	Draperstown
222	Dunnamore



## EMPLOYMENT

## Rank

96	Coalisland South
190	Glebe 2
217	Killymoon
219	Ballysaggart
223	Town Parks East 2
233	Coalisland North
238	Ardboe
262	Drumglass
267	Pomeroy
292	Gortalowry



## HEALTH AND DISABILITY

## Rank

82	Coalisland South
122	Glebe 2
137	Town Parks East 2
178	Ardboe
189	Oldtown
191	Coalisland North
192	Killymoon
203	Drumglass
210	Ballysaggart
236	Newbuildings



## EDUCATION, SKILLS AND TRAINING

## Rank

131	Glebe 2
155	Ballysaggart
191	Killymoon
199	Coalisland South
206	Drumglass
221	Town Parks East 2
235	Coalisland West and Newmills
250	Newbuildings
258	Ardboe
275	Maghera



## ACCESS TO SERVICES

## Rank

6	Dunnamore
10	Lissan
24	Swatragh 2
30	Lower Glenshane 1
36	Augher
40	Clogher
44	The Loop
53	Altmore
57	Caledon
59	Oaklands



## LIVING ENVIRONMENT

## Rank

65	Coolhill
122	Altmore
137	Mullaghmore
150	Caledon
195	Upperlands
197	Augher
203	Clogher
226	Killymeal
229	Stewartstown
250	Ballysaggart



## CRIME AND DISORDER

## Rank

90	Town Parks East 2
96	Tullagh
98	Mullaghmore
156	Ballysaggart
159	Newbuildings
197	Coalisland South
203	Gortalowry
204	Oldtown
215	Town Parks West
253	Glebe 1

## MDM

## MULTIPLE DEPRIVATION

## Rank

92	Coalisland South
167	Pomeroy
206	Ardboe
218	Town Parks East 2
227	Glebe 2
232	Ballygawley
239	Ballysaggart
254	Killymoon
255	Maghera
271	Dunnamore

## Most deprived SOAs within NEWRY, MOURNE AND DOWN LGD



## INCOME

## Rank

1	Creggan
2	Forkhill 2
3	Silver Bridge 1
5	Crossmaglen
13	Newtownhamilton
36	Silver Bridge 2
52	Drumgullion 1
66	Annalong 2
77	Derrymore 1
78	Kilkeel South 2



## EMPLOYMENT

## Rank

73	Ballybot
77	Murlough
89	Drumgullion 1
93	Ballymote
100	Daisy Hill 2
105	Quoile 1
109	Crossmaglen
115	Ardglass 1
122	Kilkeel South 2
124	Daisy Hill 1



## HEALTH AND DISABILITY

## Rank

57	Ballymote
75	Daisy Hill 2
80	Ballybot
83	Daisy Hill 1
90	Drumgullion 1
114	Murlough
125	Cathedral 2
128	Bessbrook
146	Quoile 1
152	Cathedral 1



## EDUCATION, SKILLS AND TRAINING

## Rank

61	Bessbrook
100	Ballybot
102	Drumgullion 1
105	Daisy Hill 1
113	Ballymote
142	Castlewellan 1
158	Cathedral 2
175	Ardglass 1
176	Murlough
198	Clonallan 1



## ACCESS TO SERVICES

## Rank

4	Ballyward
26	Donaghmore 1
28	Lisnacree
29	Mayobridge 2
31	Strangford
37	Newtownhamilton
61	Creggan
66	Seaforde
67	Silver Bridge 2
72	Killough 2



## LIVING ENVIRONMENT

## Rank

24	Daisy Hill 2
35	Castlewellan 1
38	St Patrick's 2
57	Derryboy 2
73	Ballybot
74	St Mary's
81	Crossmaglen
85	Derrymore 1
90	St Patrick's 1
129	Tollymore 1



## CRIME AND DISORDER

## Rank

8	Daisy Hill 2
23	Cathedral 2
34	Ballymote
49	St Patrick's 2
56	Ballybot
57	Murlough
58	Drumalane 2
64	Shimna
75	Clonallan 1
128	St Mary's

## MDM

## MULTIPLE DEPRIVATION

## Rank

57	Crossmaglen
70	Drumgullion 1
72	Creggan
75	Daisy Hill 2
89	Murlough
93	Ballybot
94	Silver Bridge 1
100	Forkhill 2
106	Cathedral 2
111	Newtownhamilton

For each domain, as well as the overall multiple measure the 890 SOAs in NI are ranked from 1 (most deprived) to 890 (least deprived)