



**Boundary Commission  
for Northern Ireland**



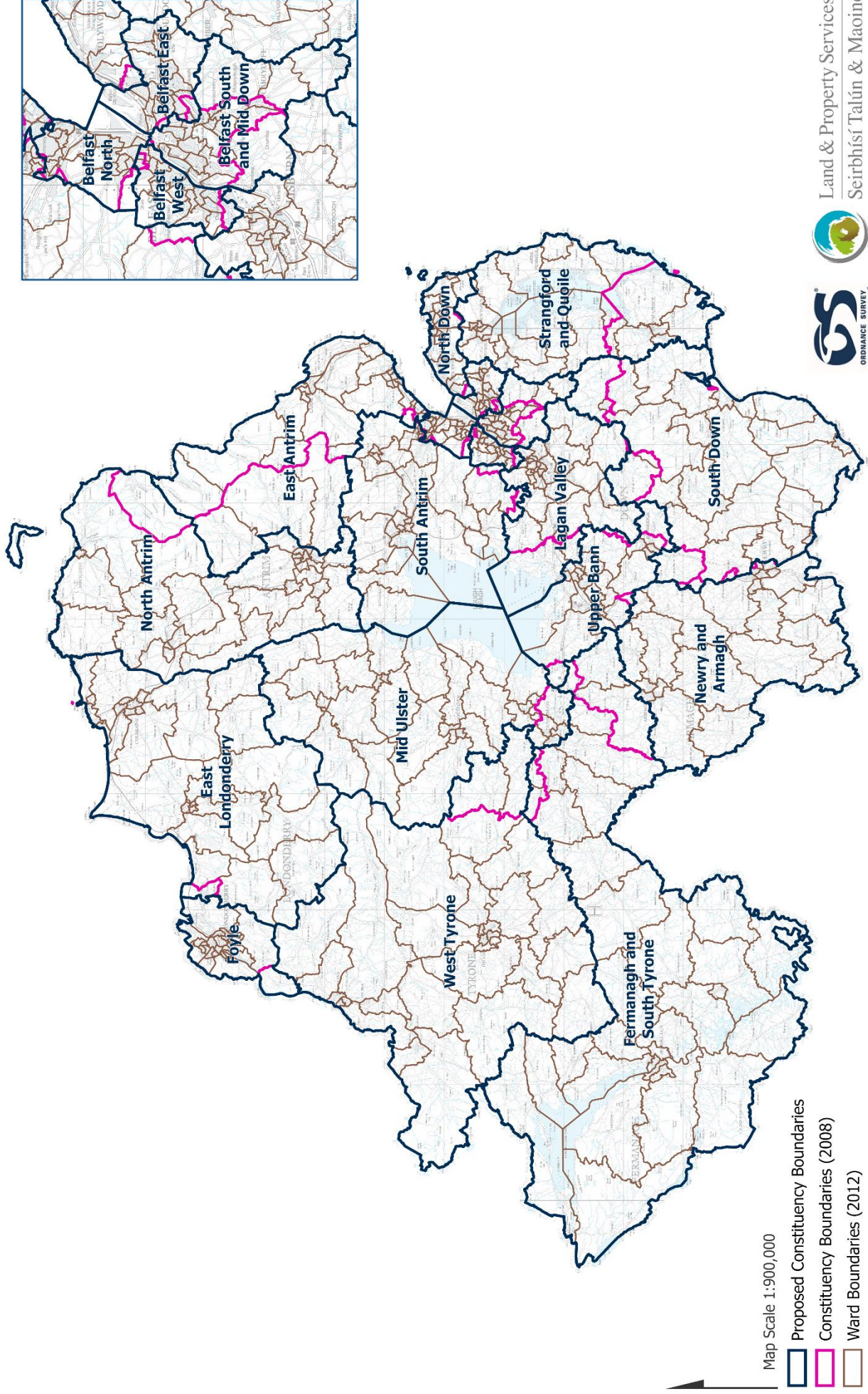
Maps to accompany Initial Proposals  
for the

**2023**

**Parliamentary  
Constituency  
Boundary Review**

October 2021

# Initial Proposals and Existing Constituency Boundaries



Land & Property Services  
Seirbhísí Talún & Maoine

Maps used in Commission documents and on our website are based upon Crown Copyright material and are reproduced with the permission of Land & Property Services under delegated authority from the Keeper of Public Records. Crown copyright and database right (2021). These maps may be reproduced for purposes of communicating with the Commission regarding the review of constituency boundaries.

Any other reproduction in whole or in part requires the prior permission of Land & Property Services. Unauthorised reproduction will infringe Crown Copyright and may lead to prosecution or civil proceedings. Any person wishing to reproduce maps should contact Land & Property Services - <https://www.finance-ni.gov.uk/contacts/contact-land-property-services>

# Initial Proposals: Belfast East



Map Scale 1:70,000

- Proposed Constituency Boundaries
- Ward Boundaries (2012)



Land & Property Services  
Seirbhísí Talún & Maoine

Maps used in Commission documents and on our website are based upon Crown Copyright material and are reproduced with the permission of Land & Property Services under delegated authority from the Keeper of Public Records, Crown copyright and database right (2021).  
These maps may be reproduced for purposes of communicating with the Commission regarding the review of constituency boundaries.

Any other reproduction in whole or in part requires the prior permission of Land & Property Services. Unauthorised reproduction will infringe Crown Copyright and may lead to prosecution or civil proceedings. Any person wishing to reproduce maps should contact Land & Property Services - <https://www.finance-ni.gov.uk/contacts/contact-land-property-services>

# Initial Proposals: Belfast North



Map Scale 1:65,000

-  Proposed Constituency Boundaries
-  Ward Boundaries (2012)



Land & Property Services  
Seirbhísí Talún & Maoine

Maps used in Commission documents and on our website are based upon Crown Copyright material and are reproduced with the permission of Land & Property Services under delegated authority from the Keeper of Public Records, Crown copyright and database right (2021).  
These maps may be reproduced for purposes of communicating with the Commission regarding the review of constituency boundaries.

Any other reproduction in whole or in part requires the prior permission of Land & Property Services. Unauthorised reproduction will infringe Crown Copyright and may lead to prosecution or civil proceedings. Any person wishing to reproduce maps should contact Land & Property Services - <https://www.finance-ni.gov.uk/contacts/contact-land-property-services>

# Initial Proposals: Belfast South and Mid Down



Map Scale 1:90,000

- Proposed Constituency Boundaries
- Ward Boundaries (2012)



Land & Property Services  
Seirbhísí Talún & Maoine

Maps used in Commission documents and on our website are based upon Crown Copyright material and are reproduced with the permission of Land & Property Services under delegated authority from the Keeper of Public Records, Crown copyright and database right (2021).  
These maps may be reproduced for purposes of communicating with the Commission regarding the review of constituency boundaries.

Any other reproduction in whole or in part requires the prior permission of Land & Property Services. Unauthorised reproduction will infringe Crown Copyright and may lead to prosecution or civil proceedings. Any person wishing to reproduce maps should contact Land & Property Services - <https://www.finance-ni.gov.uk/contacts/contact-land-property-services>

# Initial Proposals: Belfast West



Map Scale 1:60,000

- Proposed Constituency Boundaries
- Ward Boundaries (2012)

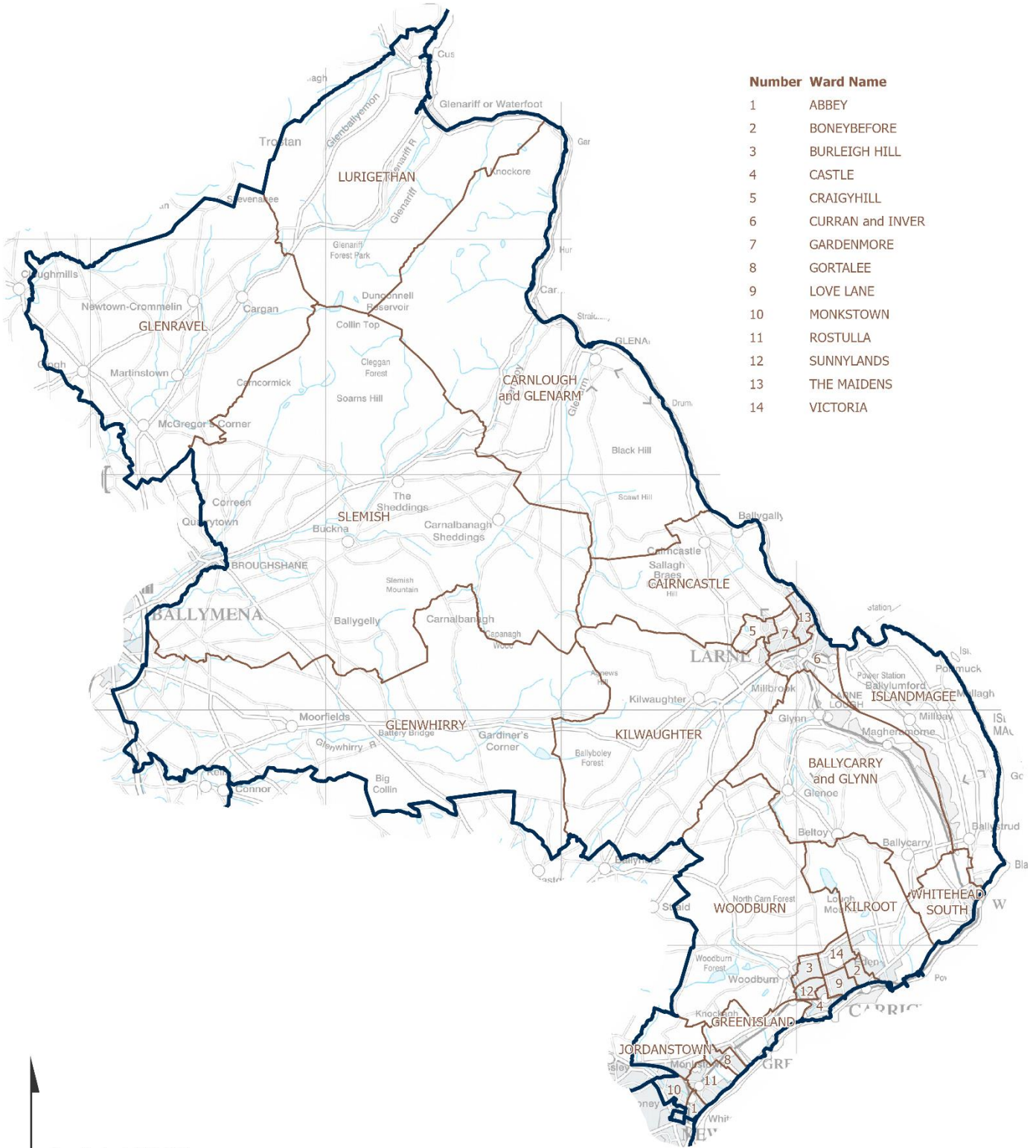


Land & Property Services  
Seirbhísí Talún & Maoine

Maps used in Commission documents and on our website are based upon Crown Copyright material and are reproduced with the permission of Land & Property Services under delegated authority from the Keeper of Public Records, Crown copyright and database right (2021).  
These maps may be reproduced for purposes of communicating with the Commission regarding the review of constituency boundaries.

Any other reproduction in whole or in part requires the prior permission of Land & Property Services. Unauthorised reproduction will infringe Crown Copyright and may lead to prosecution or civil proceedings. Any person wishing to reproduce maps should contact Land & Property Services - <https://www.finance-ni.gov.uk/contacts/contact-land-property-services>

# Initial Proposals: East Antrim



Number	Ward Name
1	ABBEY
2	BONEYBEFORE
3	BURLEIGH HILL
4	CASTLE
5	CRAIGYHILL
6	CURRAN and INVER
7	GARDENMORE
8	GORTALEE
9	LOVE LANE
10	MONKSTOWN
11	ROSTULLA
12	SUNNYLANDS
13	THE MAIDENS
14	VICTORIA

- Proposed Constituency Boundaries
- Ward Boundaries (2012)



Land & Property Services  
Seirbhís Talún & Maoine

Maps used in Commission documents and on our website are based upon Crown Copyright material and are reproduced with the permission of Land & Property Services under delegated authority from the Keeper of Public Records, Crown copyright and database right (2021).  
These maps may be reproduced for purposes of communicating with the Commission regarding the review of constituency boundaries.

Any other reproduction in whole or in part requires the prior permission of Land & Property Services. Unauthorised reproduction will infringe Crown Copyright and may lead to prosecution or civil proceedings. Any person wishing to reproduce maps should contact Land & Property Services - <https://www.finance-ni.gov.uk/contacts/contact-land-property-services>

# Initial Proposals: East Londonderry

**Number Ward Name**

- 1 CHURCHLAND
- 2 COOLESSAN
- 3 GREYSTONE
- 4 HOPEFIELD
- 5 MOUNTSANDEL
- 6 QUARRY
- 7 ROESIDE
- 8 UNIVERSITY
- 9 WATERSIDE



Map Scale 1:250,000

- Proposed Constituency Boundaries
- Ward Boundaries (2012)



Land & Property Services  
Seirbhísí Talún & Maoine

Maps used in Commission documents and on our website are based upon Crown Copyright material and are reproduced with the permission of Land & Property Services under delegated authority from the Keeper of Public Records, Crown copyright and database right (2021).  
These maps may be reproduced for purposes of communicating with the Commission regarding the review of constituency boundaries.

Any other reproduction in whole or in part requires the prior permission of Land & Property Services. Unauthorised reproduction will infringe Crown Copyright and may lead to prosecution or civil proceedings. Any person wishing to reproduce maps should contact Land & Property Services - <https://www.finance-ni.gov.uk/contacts/contact-land-property-services>



# Initial Proposals: Fermanagh and South Tyrone



Map Scale 1:400,000

- Proposed Constituency Boundaries
- Ward Boundaries (2012)

Number	Ward Name
1	CASTLECOOLE
2	ERNE
3	PORTORA
4	ROSSORRY



Land & Property Services  
Seirbhís Talún & Maoine

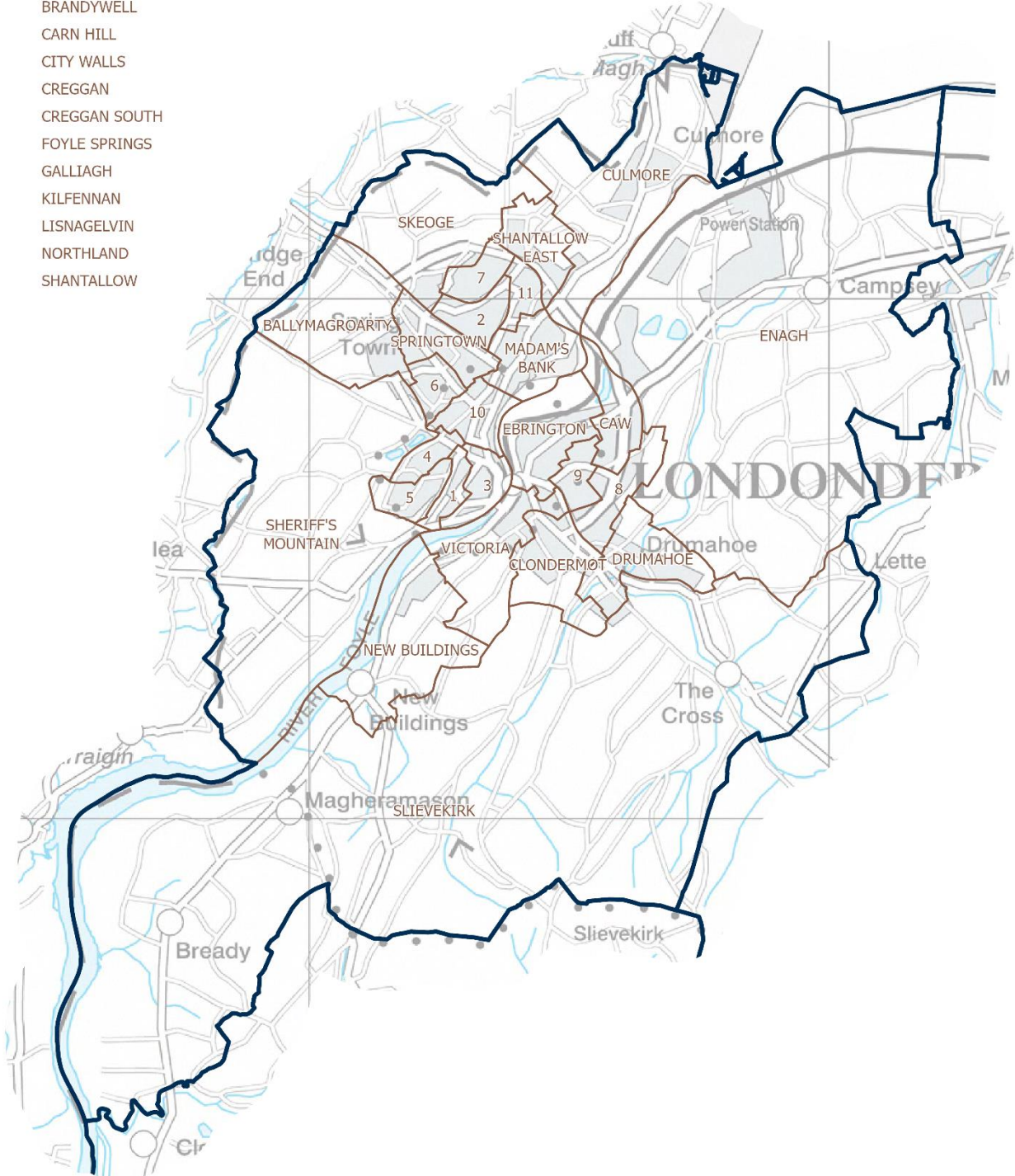
Maps used in Commission documents and on our website are based upon Crown Copyright material and are reproduced with the permission of Land & Property Services under delegated authority from the Keeper of Public Records. Crown copyright and database right (2021).  
These maps may be reproduced for purposes of communicating with the Commission regarding the review of constituency boundaries.

Any other reproduction in whole or in part requires the prior permission of Land & Property Services. Unauthorised reproduction will infringe Crown Copyright and may lead to prosecution or civil proceedings. Any person wishing to reproduce maps should contact Land & Property Services - <https://www.finance-ni.gov.uk/contacts/contact-land-property-services>

# Initial Proposals: Foyle

**Number Ward Name**

- 1 BRANDYWELL
- 2 CARN HILL
- 3 CITY WALLS
- 4 CREGGAN
- 5 CREGGAN SOUTH
- 6 FOYLE SPRINGS
- 7 GALLIAGH
- 8 KILFENNAN
- 9 LISNAGELVIN
- 10 NORTHLAND
- 11 SHANTALLOW



Map Scale 1:120,000

Proposed Constituency Boundaries

Ward Boundaries (2012)

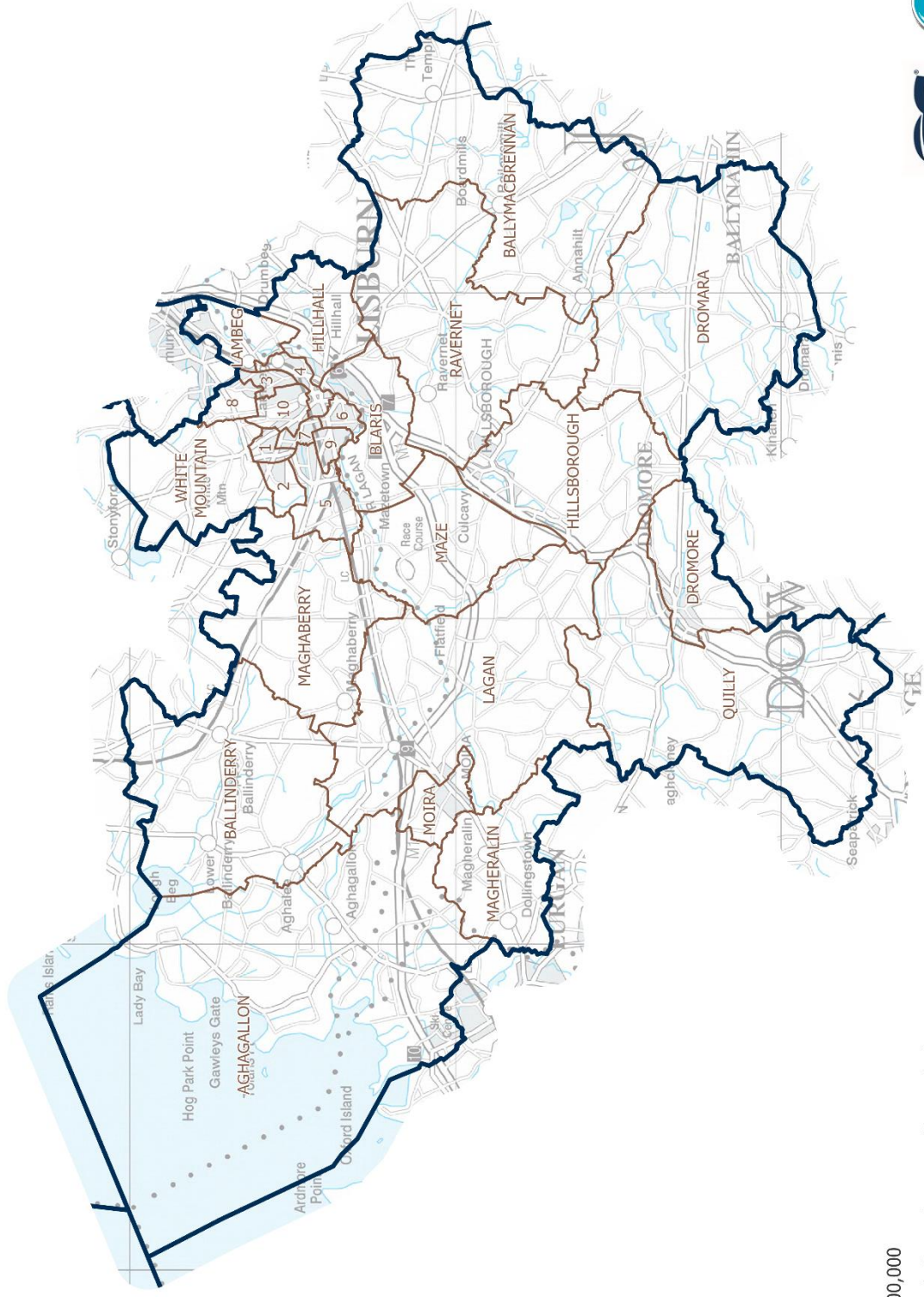


Land & Property Services  
Seirbhísí Talún & Maoine

Maps used in Commission documents and on our website are based upon Crown Copyright material and are reproduced with the permission of Land & Property Services under delegated authority from the Keeper of Public Records, Crown copyright and database right (2021).  
These maps may be reproduced for purposes of communicating with the Commission regarding the review of constituency boundaries.

Any other reproduction in whole or in part requires the prior permission of Land & Property Services. Unauthorised reproduction will infringe Crown Copyright and may lead to prosecution or civil proceedings. Any person wishing to reproduce maps should contact Land & Property Services - <https://www.finance-ni.gov.uk/contacts/contact-land-property-services>

# Initial Proposals: Lagan Valley



Map Scale 1:200,000

- Proposed Constituency Boundaries
- Ward Boundaries (2012)

Number	Ward Name
1	BALLYMACASH
2	BALLYMACOSS
3	HARMONY HILL
4	HILDEN
5	KNOCKMORE
6	LAGAN VALLEY
7	LISNAGARVEY
8	MAGHERALAVE
9	OLD WARREN
10	WALLACE PARK



Land & Property Services  
Seirbhís Talún & Maoine

Maps used in Commission documents and on our website are based upon Crown Copyright material and are reproduced with the permission of Land & Property Services under delegated authority from the Keeper of Public Records, Crown copyright and database right (2021).  
 These maps may be reproduced for purposes of communicating with the Commission regarding the review of constituency boundaries.  
 Any other reproduction in whole or in part requires the prior permission of Land & Property Services. Unauthorised reproduction will infringe Crown Copyright and may lead to prosecution or civil proceedings. Any person wishing to reproduce maps should contact Land & Property Services - <https://www.finance-ni.gov.uk/contacts/contact-land-property-services>

# Initial Proposals: Mid Ulster



Number	Ward Name
1	BALLYSAGGART
2	COALISLAND NORTH
3	COALISLAND SOUTH
4	COOKSTOWN EAST
5	COOKSTOWN SOUTH
6	COOKSTOWN WEST
7	GLEBE
8	MOYGASHEL
9	TOWN PARKS EAST

Map Scale 1:250,000

- Proposed Constituency Boundaries
- Ward Boundaries (2012)



Land & Property Services  
Seirbhísí Talún & Maoine

Maps used in Commission documents and on our website are based upon Crown Copyright material and are reproduced with the permission of Land & Property Services under delegated authority from the Keeper of Public Records, Crown copyright and database right (2021).  
These maps may be reproduced for purposes of communicating with the Commission regarding the review of constituency boundaries.

Any other reproduction in whole or in part requires the prior permission of Land & Property Services. Unauthorised reproduction will infringe Crown Copyright and may lead to prosecution or civil proceedings. Any person wishing to reproduce maps should contact Land & Property Services - <https://www.finance-ni.gov.uk/contacts/contact-land-property-services>

# Initial Proposals: Newry and Armagh



Number	Ward Name
1	ABBEY
2	BALLYBOT
3	DAMOLLY
4	DRUMALANE
5	ST. PATRICK'S

Map Scale 1:225,000

- Proposed Constituency Boundaries
- Ward Boundaries (2012)



Land & Property Services  
Seirbhísí Talún & Maoine

Maps used in Commission documents and on our website are based upon Crown Copyright material and are reproduced with the permission of Land & Property Services under delegated authority from the Keeper of Public Records, Crown copyright and database right (2021).  
These maps may be reproduced for purposes of communicating with the Commission regarding the review of constituency boundaries.

Any other reproduction in whole or in part requires the prior permission of Land & Property Services. Unauthorised reproduction will infringe Crown Copyright and may lead to prosecution or civil proceedings. Any person wishing to reproduce maps should contact Land & Property Services - <https://www.finance-ni.gov.uk/contacts/contact-land-property-services>

# Initial Proposals: North Antrim



## Number Ward Name

- |    |                       |
|----|-----------------------|
| 1  | ACADEMY               |
| 2  | ARDEEVIN              |
| 3  | BALLEE and HARRYVILLE |
| 4  | BALLYKEEL             |
| 5  | BALLYMONEY EAST       |
| 6  | BALLYMONEY NORTH      |
| 7  | BALLYMONEY SOUTH      |
| 8  | BRAIDWATER            |
| 9  | CASTLE DEMESNE        |
| 10 | FAIR GREEN            |
| 11 | PARK                  |

Map Scale 1:275,000

- Proposed Constituency Boundaries
- Ward Boundaries (2012)

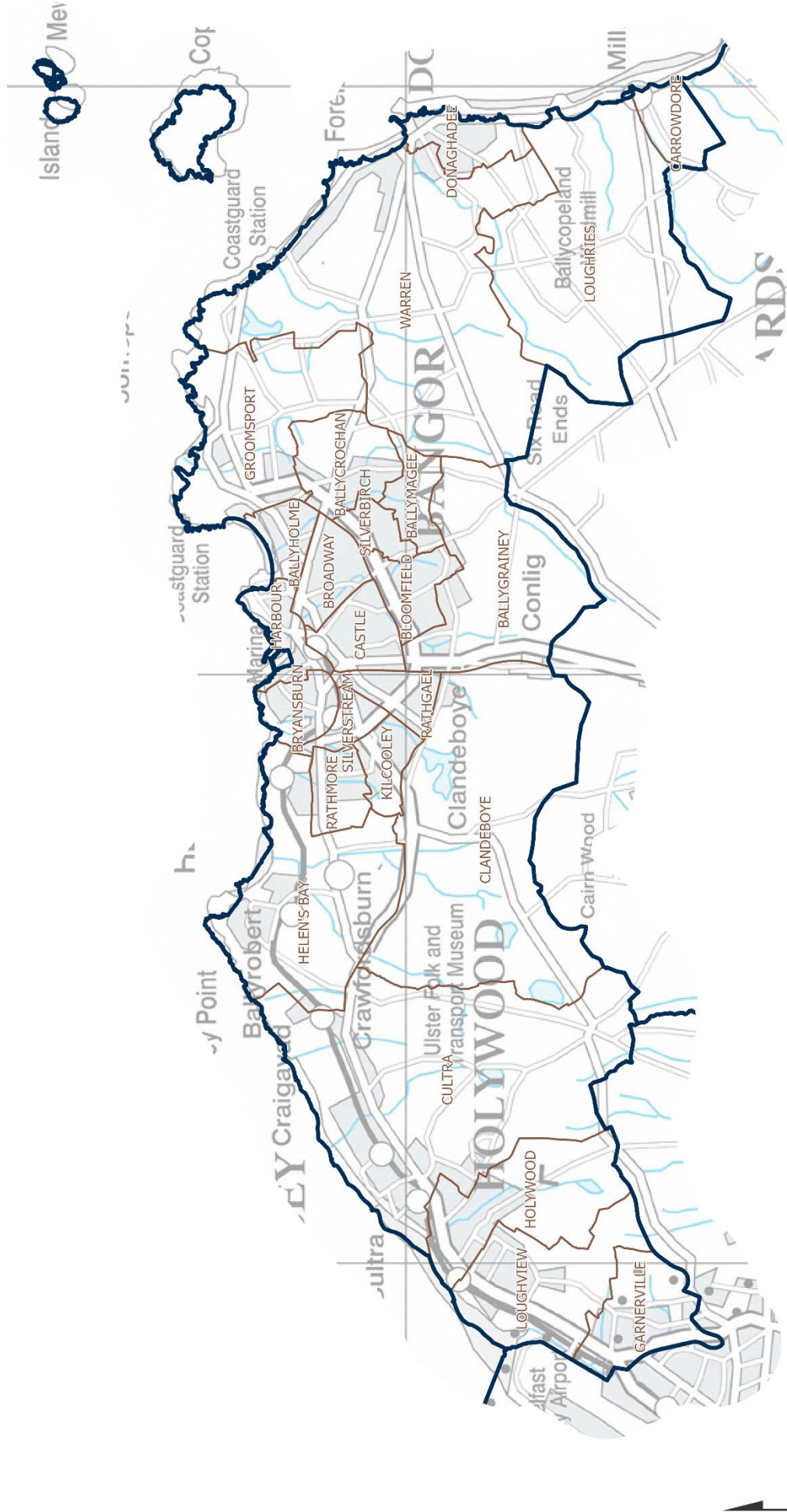


Land & Property Services  
Seirbhís Talún & Maoine

Maps used in Commission documents and on our website are based upon Crown Copyright material and are reproduced with the permission of Land & Property Services under delegated authority from the Keeper of Public Records, Crown copyright and database right (2021).  
These maps may be reproduced for purposes of communicating with the Commission regarding the review of constituency boundaries.

Any other reproduction in whole or in part requires the prior permission of Land & Property Services. Unauthorised reproduction will infringe Crown Copyright and may lead to prosecution or civil proceedings. Any person wishing to reproduce maps should contact Land & Property Services - <https://www.finance-ni.gov.uk/contacts/contact-land-property-services>

# Initial Proposals: North Down



Map Scale 1:100,000

- Proposed Constituency Boundaries
- Ward Boundaries (2012)

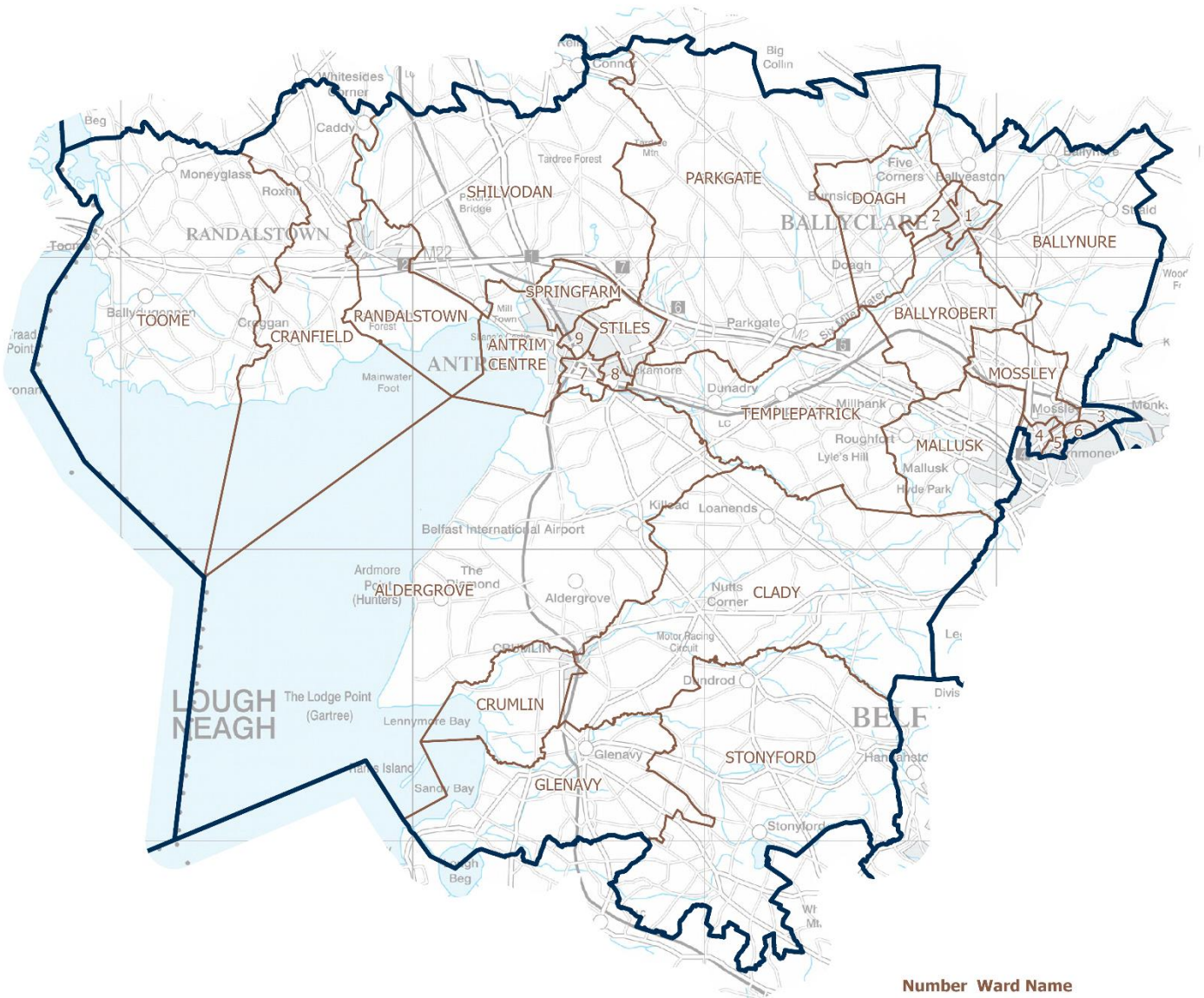
Maps used in Commission documents and on our website are based upon Crown Copyright material and are reproduced with the permission of Land & Property Services under delegated authority from the Keeper of Public Records, Crown copyright and database right (2021). These maps may be reproduced for purposes of communicating with the Commission regarding the review of constituency boundaries.

Any other reproduction in whole or in part requires the prior permission of Land & Property Services. Unauthorised reproduction will infringe Crown Copyright and may lead to prosecution or civil proceedings. Any person wishing to reproduce maps should contact Land & Property Services - <https://www.finance-ni.gov.uk/contacts/contact-land-property-services>



Land & Property Services  
Seirbhís Talún & Maoine

# Initial Proposals: South Antrim



## Number Ward Name

1	BALLYCLARE EAST
2	BALLYCLARE WEST
3	BALLYDUFF
4	BURNTHILL
5	CARNMONEY
6	FAIRVIEW
7	FOUNTAIN HILL
8	GREYSTONE
9	STEEPLE

Map Scale 1:225,000

-  Proposed Constituency Boundaries
-  Ward Boundaries (2012)



Land & Property Services  
Seirbhísí Talún & Maoine

Maps used in Commission documents and on our website are based upon Crown Copyright material and are reproduced with the permission of Land & Property Services under delegated authority from the Keeper of Public Records, Crown copyright and database right (2021).  
These maps may be reproduced for purposes of communicating with the Commission regarding the review of constituency boundaries.

Any other reproduction in whole or in part requires the prior permission of Land & Property Services. Unauthorised reproduction will infringe Crown Copyright and may lead to prosecution or civil proceedings. Any person wishing to reproduce maps should contact Land & Property Services - <https://www.finance-ni.gov.uk/contacts/contact-land-property-services>



# Initial Proposals: South Down



Map Scale 1:250,000

- Proposed Constituency Boundaries
- Ward Boundaries (2012)

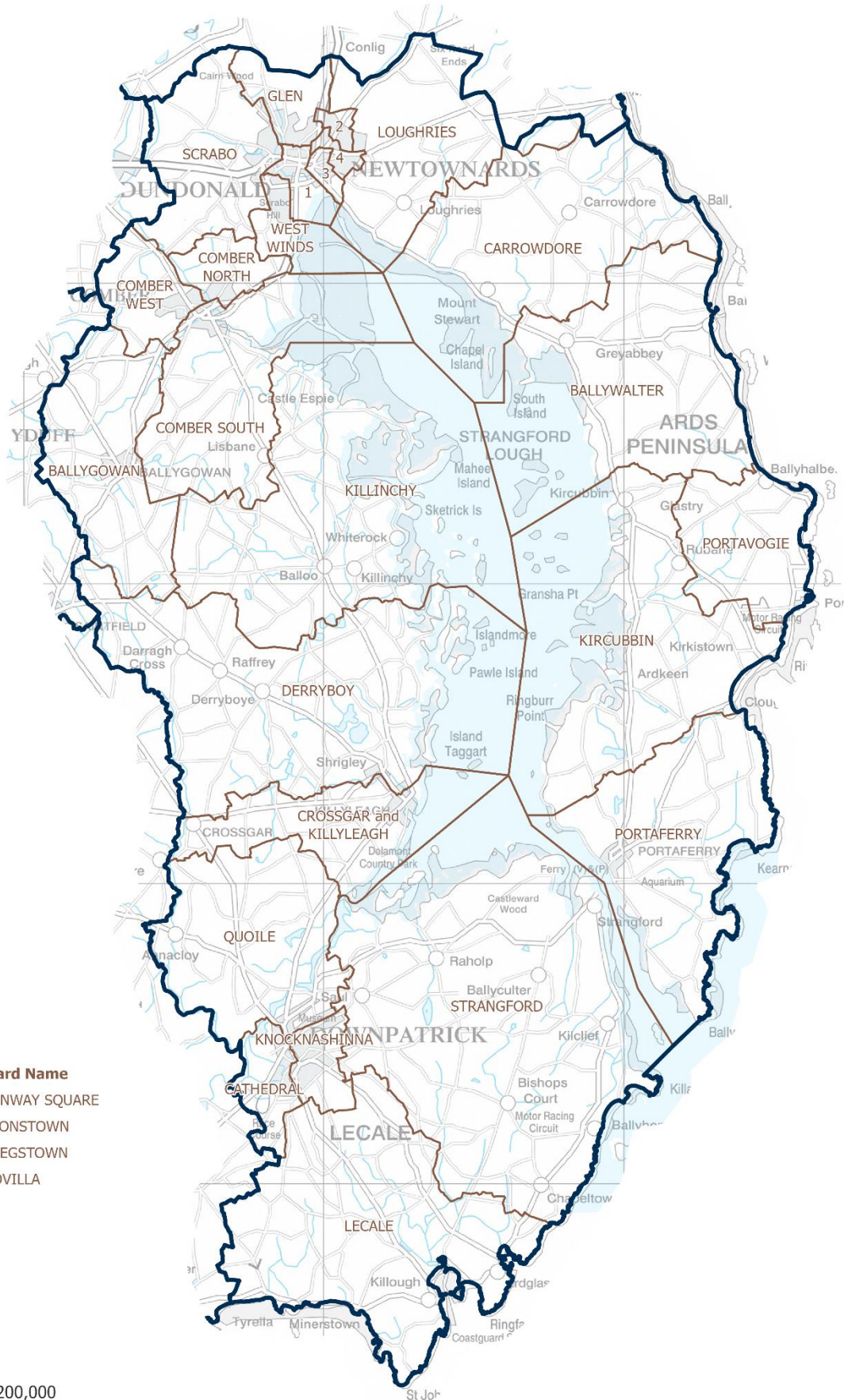


Land & Property Services  
Seirbhís Talún & Maoine

Maps used in Commission documents and on our website are based upon Crown Copyright material and are reproduced with the permission of Land & Property Services under delegated authority from the Keeper of Public Records, Crown copyright and database right (2021).  
These maps may be reproduced for purposes of communicating with the Commission regarding the review of constituency boundaries.

Any other reproduction in whole or in part requires the prior permission of Land & Property Services. Unauthorised reproduction will infringe Crown Copyright and may lead to prosecution or civil proceedings. Any person wishing to reproduce maps should contact Land & Property Services - <https://www.finance-ni.gov.uk/contacts/contact-land-property-services>

# Initial Proposals: Strangford and Quoile



Number	Ward Name
1	CONWAY SQUARE
2	CRONSTOWN
3	GREGSTOWN
4	MOVILLA

- Proposed Constituency Boundaries
- Ward Boundaries (2012)



Land & Property Services  
Seirbhís Talún & Maoine

Maps used in Commission documents and on our website are based upon Crown Copyright material and are reproduced with the permission of Land & Property Services under delegated authority from the Keeper of Public Records, Crown copyright and database right (2021).  
These maps may be reproduced for purposes of communicating with the Commission regarding the review of constituency boundaries.

Any other reproduction in whole or in part requires the prior permission of Land & Property Services. Unauthorised reproduction will infringe Crown Copyright and may lead to prosecution or civil proceedings. Any person wishing to reproduce maps should contact Land & Property Services - <https://www.finance-ni.gov.uk/contacts/contact-land-property-services>

# Initial Proposals: Upper Bann



Map Scale 1:175,000

 Proposed Constituency Boundaries  
 Ward Boundaries (2012)



Land & Property Services  
 Seirbhísí Talún & Maoine

Maps used in Commission documents and on our website are based upon Crown Copyright material and are reproduced with the permission of Land & Property Services under delegated authority from the Keeper of Public Records, Crown copyright and database right (2021).  
 These maps may be reproduced for purposes of communicating with the Commission regarding the review of constituency boundaries.

Any other reproduction in whole or in part requires the prior permission of Land & Property Services. Unauthorised reproduction will infringe Crown Copyright and may lead to prosecution or civil proceedings. Any person wishing to reproduce maps should contact Land & Property Services - <https://www.finance-ni.gov.uk/contacts/contact-land-property-services>

