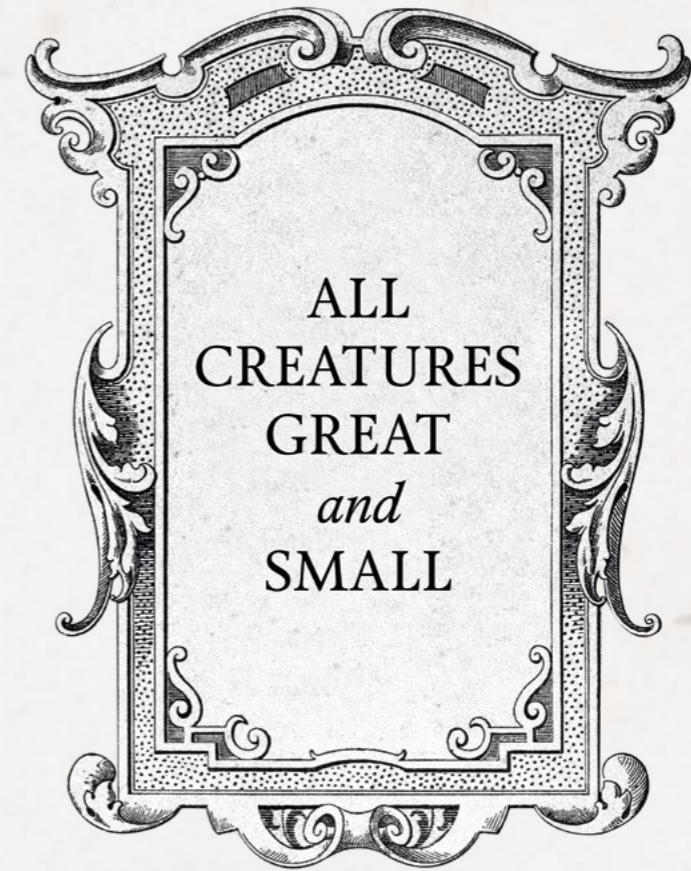


ALL
CREATURES
GREAT
and
SMALL

You have granted me life and given
your and the visitation hath preserved
my spirit.



ALL
CREATURES
GREAT
and
SMALL

© Government of Ireland and Crown Copyright 2020
© *Cóipcheart Rialtas na hÉireann agus an Choróin 2020*

Published by the Office of Public Works (OPW) and the Department of Finance, Northern Ireland (DoF)

Arna fhoilsiú ag Oifig na nOibreacha Poiblí (OPW) agus ag An Roinn Airgeadais, Tuaisceart Éireann (DoF)

Design Dearadh: Ciarán Murphy

Production Táirgeadh: Marie Harpur, IJP Print Services

Print Priontáil: Printrun Ltd, Dublin

Translation Aistriúchán: Máirtín Ó Curraoin

Dimensions framed, height preceding width, unless otherwise noted
Toisí frámaithe, airde roimh leithead, mura luaitear a mhalairt

Front cover: *Visitation* by Gavin Lavelle, OPW collection
Clúdach tosaigh: *Visitation le Gavin Lavelle, bailiúchán OPW*



OPW Oifig na nOibreacha Poiblí
Office of Public Works

FOREWORD

Welcome to *All Creatures Great and Small*, the latest in the series of joint art exhibitions organised by the Office of Public Works (OPW) and the Department of Finance (DoF). Both Departments have worked in partnership organising art exhibitions since the 1990s. These exhibitions have toured many venues across the island, bringing both collections to wider public audiences.

The focus of this year's exhibition is the natural world - insects, animals and sea creatures. The thirty-three artworks included reflect the diversity of artworks in both collections and the paintings, photographs, prints and sculpture in the exhibition celebrate the vision of each individual artist. Without their creativity there could not be an exhibition for you to enjoy. We also thank the venues welcoming the exhibition in 2020 and 2021. The catalogue is available on our websites so that audiences can also view the artworks online.

It is with great pleasure that we, as Ministers for the two collaborating Departments, bring you this exhibition.

BROLLACH

Fáilte chuig *Gach Ainmhí Mór agus Beag*, an ceann is déanaí de shraith comhthaispeántas ealaíne arna n-eagrú ag Oifig an nOibreacha Poiblí (OPW) agus an Roinn Airgeadais (DoF). Tá an dá Roinn ag obair i gcomhar chun taispeántais ealaíne a eagrú ó na 1990idí i leith. Tugadh na taispeántais sin ar camchuairt chuig mórán ionad ar fud an oileáin, agus dá réir sin cuireadh an dá bhailiúchán os comhair lucht féachana poiblí níos forleithne.

Tá taispeántas na bliana seo dírithe ar an dúlra - feithidí, ainmhithe agus ainmhithe mara. Léiríonn na trí cinn is tríocha de shaothair ealaíne atá san áireamh éagsúlacht na saothar ealaíne sa dá bhailiúchán agus déanann na pictiúir, na grianghraif, na priontaí agus an dealbhóireacht sa taispeántas an fhís a bhí ag gach ealaíontóir ar leith a cheiliúradh. D'uireasa a gcruithaitheachta siúd ní bheadh aon taispeántas ann le taitneamh a bhaint as. Gabhaimis buíochas freisin leis na hionaid a d'fháiltigh roimh an taispeántas in 2020 agus 2021. Tá an chatalóg ar fáil ar ár suíomhanna gréasáin ionas go bhféadfaidh an lucht féachana amharc ar na saothair ealaíne ar líne freisin.

Is mór an chúis áthais dúinne, mar Airí sa dá Roinn atá ag obair i gcomhar, an taispeántas seo a chur ar fáil daoibh.



Patrick O'Donovan

Minister of State
Aire Stáit

Office of Public Works
Oifig na nOibreacha Poiblí



Conor Murphy

Minister for Finance
Aire Airgeadais

Department of Finance
An Roinn Airgeadais

INTRODUCTION

The Department of Finance of Northern Ireland (DoF) and the Office of Public Works (OPW) have worked together for over twenty years to share artworks in the Northern Ireland Civil Service Collection and the OPW managed State Art Collection with wider audiences. The two collections are mainly on display in public buildings and the purpose of collaborating on the annual exhibition is to bring these artworks to new audiences. The exhibitions have toured numerous venues across the island and have featured works by several hundred artists. The cross-border exhibition also opens up opportunities for both Departments to collaborate with other partners, such as arts organisations, cultural venues, schools, colleges, and local government arts offices.

Each year, the exhibition is given a distinctive theme. In previous years, exhibitions have focused on themes such as still life, portraiture, sculpture, landscape painting, and printmaking. Every exhibition has been accompanied by a fully illustrated catalogue and this year's catalogue is the twenty-second in the series. Since the series was first published, it has been researched and written by the staff managing the two collections, but also over the years, art historians, graduates, students and independent curators have been invited to contribute to the catalogues. The catalogues are published now in both English and Irish.

The theme for the 2020/2021 exhibition is 'all creatures great and small' and the focus is on artworks from both collections that depict birds, animals, fish and insects and their interaction with humanity. The exhibition

RÉAMHRÁ

Le breis agus fiche bliain anuas, tá Roinn Airgeadais Thuaisceart Éireann (DoF) agus Oifig na nOibreacha Poiblí (OPW) ag obair i gcomhar chun saothair ealaíne i mBailiúchán Státseirbhís Thuaisceart Éireann agus i mBailiúchán Ealaíne an Stáit arna bhainistiú ag OPW a roinnt le lucht féachana níos forleithne. Bíonn an dá bhailiúchán ar taispeántas i bhfoirgnimh phoiblí den chuid is mó agus tá sé mar chuspóir ag an gcomhoibriú ar an taispeántas bliantúil na saothair ealaíne sin a chur os comhair lucht féachana nua. Tugadh na taispeántais ar camchuart chuig mórán ionad ar fud an oileáin agus tá saothair le cúpla céad ealaíontóir le feiceáil iontu. Tugann an taispeántas trasteorann deiseanna freisin don dá Roinn comhoibriú le comhpháirtithe eile, amhail eagraíochtaí ealaíon, ionaid chultúrtha, scoileanna, coláistí agus oifigí ealaíon na rialtas áitiúil.

Bíonn téama ar leith ag baint leis an taispeántas gach bliain. Sna blianta roimhe seo, bhí na taispeántais dírithe ar théamaí amhail ábhar neamhbheo, portráidíocht, dealbhóireacht, péintéireacht tírdhreacha agus déanamh priontaí. Bhí catalóg lánmhaisithe ag gabháil le gach taispeántas agus tá catalóg na bliana seo ar an dara ceann is fiche sa tsraith. Ó foilsíodh an tsraith i dtús báire, rinne an fhoireann a bhainistíonn an dá bhailiúchán an taighde agus an scríbhneoireacht ina leith, ach chomh maith leis sin, thar na blianta, tugadh cuireadh do staraithe ealaíne, céimithe, mic léinn agus coimeádaithe neamhspleácha ábhar a chur ar fáil do na catalóga. Foilsítear na catalóga i mBéarla agus i nGaeilge anois.

includes the work of 31 artists. Each artist brings their own individual approach to the depiction of living creatures and this diversity makes for a thoughtful and interesting exhibition.

The depiction of creatures has been present in art since the earliest of times. Drawings of animals made in mineral pigment dating to over 64,000 years ago have been discovered by archaeologists in recent years in Spain. Such new discoveries continue to add to the history of human creativity.

From ancient times, drawings, paintings and sculptures of creatures have been created for symbolic and allegorical purposes. In temples and tombs, across most world religions before the written word was accessible to all, animal imagery was used for teaching and ritual purposes. Creatures took on symbolic roles in mythological and religious narratives that can vary between cultures and times. In some cultures, a creature can represent positive attributes whilst in others negative (e.g. cat, raven, rabbit, snake, wolf). In the iconography of manuscripts, stained glass windows, and architectural ornamentation creatures play powerful and central roles.

Throughout the history of art, creatures have been created by artists as either the main subject-matter of the artwork such as in equestrian or still life with game paintings or as key participants in mythological and historical visual narratives – battle scenes, sport and hunting scenes. The depiction of wild and domesticated creatures has also been

53.2981°N, 6.2836°W

Tá 'gach ainmhí mór agus beag' mar théama do thaispeántas 2020/2021 agus é dírithe ar shaothair ealaíne ón dá bhailiúchán ina léirítear éin, ainmhithe, iasc agus feithidí agus a n-idirghníomhaíocht leis an duine. San áireamh sa taispeántas tá saothar le 31 ealaíontóir. Tá cur chuige ar leith ag gach ealaíontóir maidir le léiriú a dhéanamh ar ainmhithe beo agus de bharr na héagsúlachta sin tá an taispeántas ina ábhar machnaimh agus ina ábhar spéise.

Bhí ainmhithe á léiriú san ealaín ó thús ama. Le blianta beaga anuas, d'aimsigh seandálaithe sa Spáinn léaráidí d'ainmhithe a rinneadh le lia mhianrach breis agus 64,000 bliain ó shin. Tá fionnachtana nua den chineál sin ag cur go leanúnach leis an stair a bhaineann le cruthaitheacht an chine dhaonna.

Ón gcianaimsir go dtí an lá atá inniu ann, cruthaíodh léaráidí, pictiúir agus dealbha d'ainmhithe ar chúiseanna siombalacha agus fáthchiallacha. I dteampaill agus i dtuamaí, ar fud fhormhór reiligiúin an domhain sula raibh fáil ag cách ar an bhfocal scríofa, baineadh úsáid as íomhánna d'ainmhithe ar mhaithe le teagasc nó le deasghnátha. Ghlac ainmhithe róil shiombalacha chucu féin i scéalta miotaseolaíochta agus reiligiúnacha ar féidir leo athrú ó chultúr go cultúr nó ó aois go haois. I gcultúir áirithe, d'fhéadfadh tréithe dearfacha a bheith á léiriú ag ainmhithe ach i gcultúir eile d'fhéadfadh sé gur tréithe diúltacha a bheadh á léiriú acu (m.sh. cat, fiach dubh, coinín, nathair, mac tíre). Tá róil chumhachtacha agus lárnacha ag ainmhithe san íocónagrafaíocht a bhaineann le lámhscríbhinní, fuinneoga daite, agus maisiú ailtireachta.

Janet Mullarney
St Anthony's Rabbit



Limed wood, wool & metal, one of a series of three
Adhmad aolta, olann agus mital, ceann de shraith ina bhfuil trí cinn
44.5 x 34.5 x 14.5 cm
2016
OPW

Oryctolagus cuniculus

Felicity Shun
Untitled (Butterfly)



Screenprint, 3/25
Scagphrionta, 3/25
56 x 40.5 cm
Purchased 2020
Arna cheannach in 2020
DoF

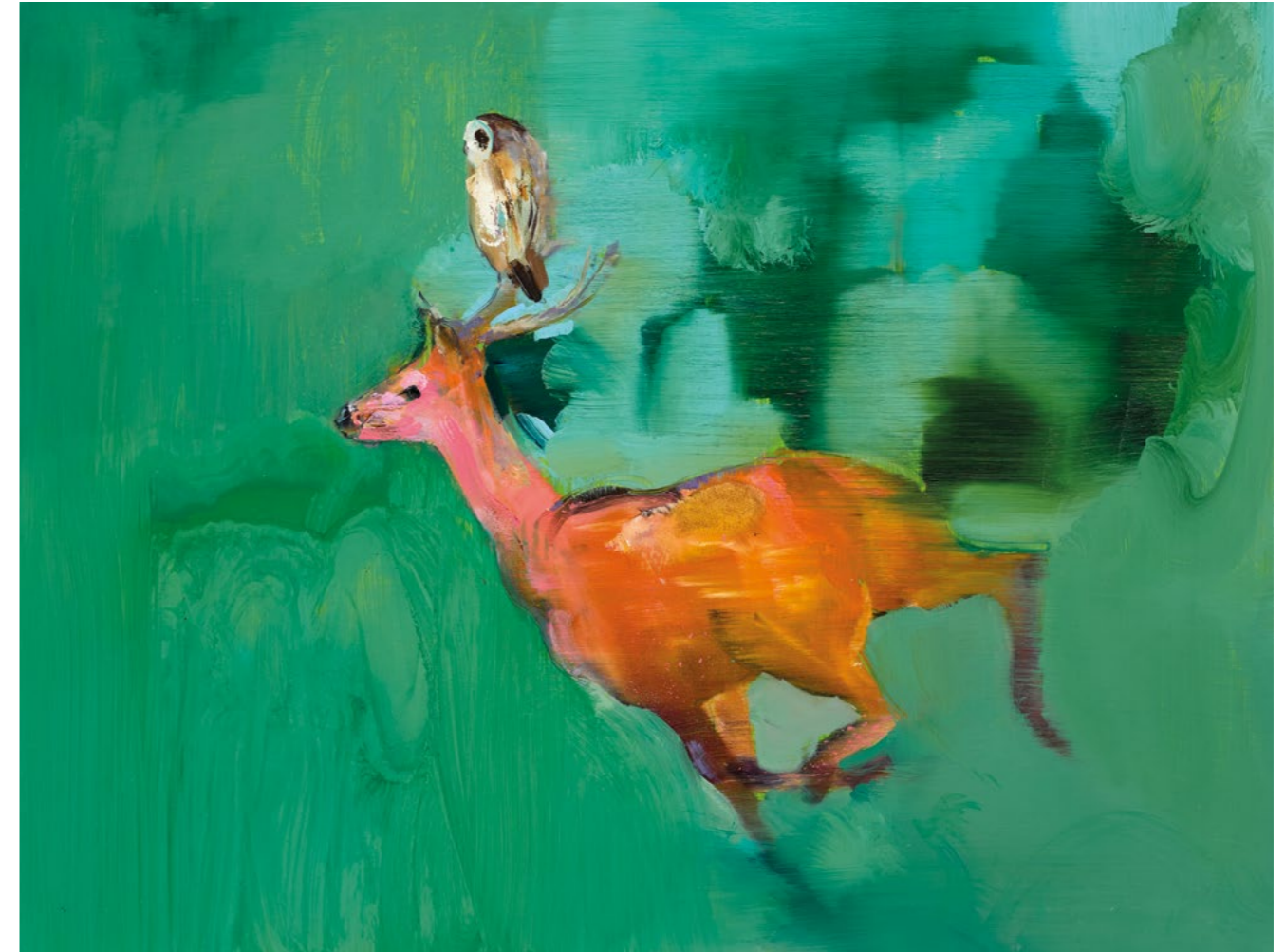
Danaus plexippus

Corrina Askin
Circus Bear



Screenprint, 2/15 V/P
Scaghrionta, 2/15 V/P
50 x 70 cm
Purchased 2020
Arna cheannach in 2020
DoF

Gabhann Dunne
He rode him lightly



Oil on panel
Ola ar phainéal
36.5 x 46.5 cm
2017
OPW

Sarah Longley
Mist above Angel Hill



Charcoal on paper
Gualach ar pháipéar
122 x 170 cm
2017
DoF

Vulpes vulpes

Aoife Layton
Habitat



Mezzotint, 4/10
Meisitint, 4/10
47.5 x 44.5 cm
2014
OPW

Hippotigris

Bono et al.
Peter & the Wolf (4)



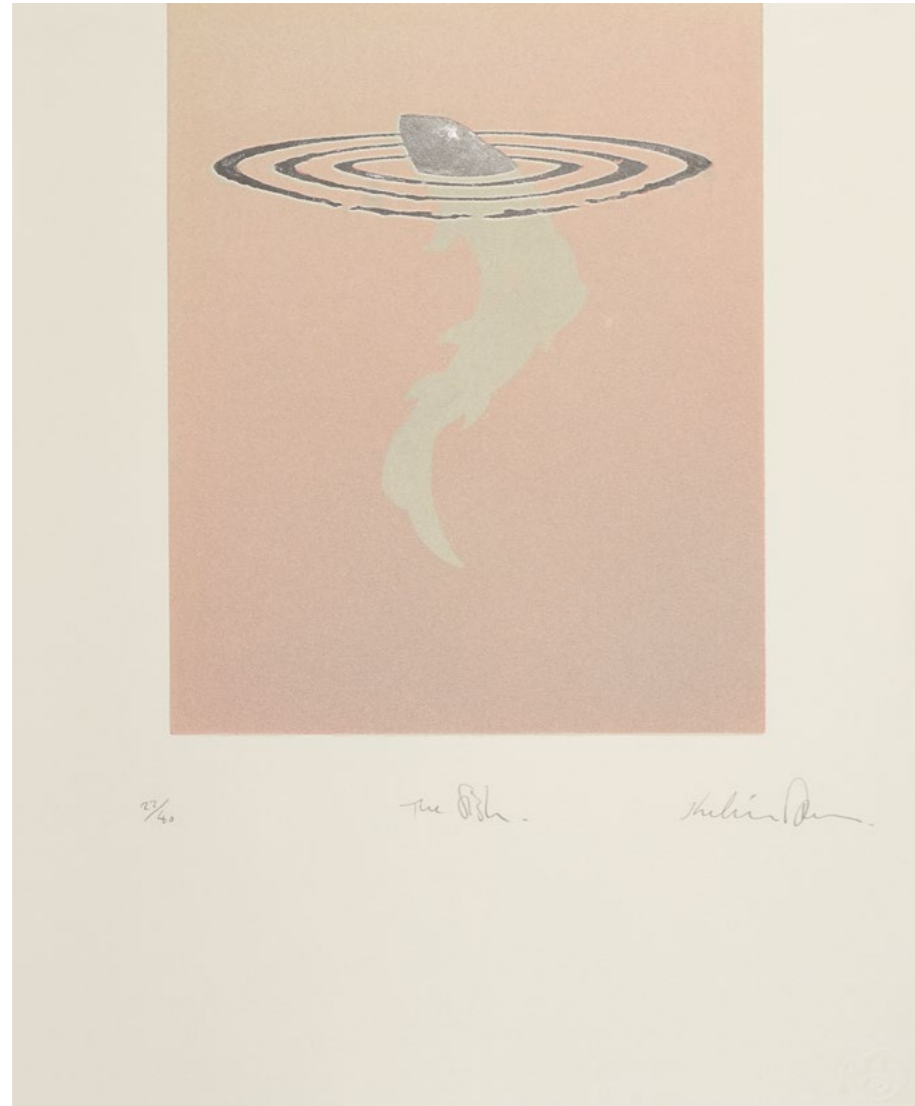
Giclée print, 152/200
Prionta Giclée, 152/200
37 x 84.5 cm
2003
OPW

John Kindness
Anatomy of a Rubber Duck



Etching, 34/50
Eitseáil, 34/50
59 x 75 cm
2014
OPW

Kelvin Mann
The Fish



Screenprint with flock, 22/40
Scaphrionta le flocas, 22/40
62.5 x 52.5 cm
2015
OPW

Ivan Frew
Thoroughbred



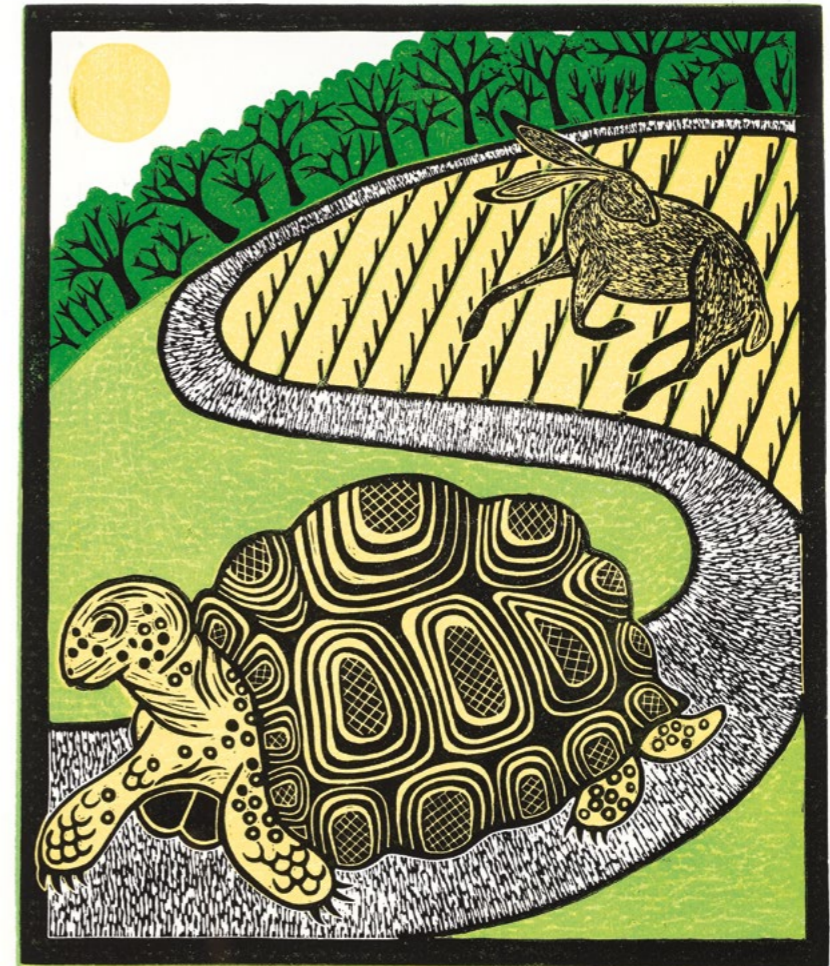
Engraving, 1/20 V/E
Greanadh, 1/20 V/E
27 x 33.5 cm
Purchased 2020
Arna cheannach in 2020
DoF

Joanna Martin
Snowy Pigs



Linocut, 3/14
Gearradh Líonóile, 3/14
27 x 27 cm
2019
DoF

Rebecca Homfray
The Tortoise & The Hare



35
The Tortoise & The Hare
R Homfray

Linocut, 3/25
Gearradh Líonóile, 3/25
57 x 48 cm
2018
OPW

James MacIntyre
The Young Foal



Watercolour on paper
Uiscadhath ar pháipéar
53 x 63 cm
1991
DoF

Tighe O'Donoghue/Ross
Tyger



Etching, drypoint and aquatint, A/P
Eitseáil, turbheara agus prionta uiscimire, A/P
70.5 x 73.5 cm
1995
OPW

Barbara Rae
Tundra Bear

John Kindness
Big Fish



Monotype
Monaiprionta
76.5 x 64 cm
2018
OPW

Etching and aquatint
Eitseáil agus prionta uiscimire, 12/40
117 x 57 cm
2017
DoF

Ursus maritimus

Magnus piscis

Maura Lynch
Nest Building



Cyanotype, 1/1
Cianaiphrionta, 1/1
60.5 x 45 cm
2019
DoF

Thomas Carr OBE
Leverogue Corner near Crawfordsburn



Oil on board
Ola ar chláir
55 x 102 cm
1959
DoF

Rachel Joynt
Goddess



Patinated bronze, 2/5
Cré-umha paiteanaithe, 2/5
40 x 40 x 20 cm
2008
OPW

Cecil Maguire
The Mournes Annalong



Oil on board
Ola ar chlár
50 x 60 cm
1983
DoF

Protoreaster nodosus

Ovis aries

Sven Sandberg
Lady with Parrot



Oil on linen
Ola ar líneadach
47 x 36.5 cm
2018
OPW

Jeffrey Morgan
Wren, Carrigskeewaun, Michael Longley



Oil on linen
Ola ar líneadach
122 x 95 cm
2016
DoF

Dara Vallely
Bull 1



Bos taurus

Oil on canvas
Ola ar chanbhás
66 x 83 cm
Purchased 2000
Arna cheannach in 2000
DoF

Colin Martin
Dog (Motion Capture)



Canis lupus

Etching, 2/30
Eitseáil, 2/30
70 x 67.5 cm
2019
OPW

Linda McWha
The Otter



Oil on canvas
Ola ar chanbhás
28 x 38 cm
Purchased 1996
Arna cheannach in 1996
DoF

Eamonn McCrory
Fish



Hand tinted collagraph, V/E
Collagraf imrithe de láimh, V/E
44 x 54.5 cm
2018
DoF

Tighe O'Donoghue/Ross
Elephant



Etching, drypoint and hand colouring
Eitseáil, prionta turbheara agus dathúchán de lámh
74 x 61.5 cm
1995
OPW

Atsushi Kaga
Clarity, flowers and sometimes happiness



Acrylic on canvas
Aicrileach ar chanbhás
103 x 83 cm
2008
OPW

Yvette Monahan
Caterpillars



C-type print
Prionta C-chineálach
72 x 83 cm
2012
OPW

Pen Jones
Night Call



Ceramic, monoprint
Ceirmeach, monaiprionta
38 x 24 cm
2019
DoF

Bruce C. Marshall
Gibbon



Giclée print on aluminium, 1/5
Prionta Giclée ar alúmanam, 1/5
70 x 70 cm
2019
DoF

Hyllobatidae

Frieda Meaney
Rosacea



Photopolymer etching, 1/5
Eitseáil fótapolaiméire, 1/5
71 x 54 cm
2013
OPW

Athorybia rosacea

INDEX OF
ARTISTS

INNÉACS NA
NEALAÍONTÓIRÍ

Gavin
Lavelle

9



Janet
Mullarney

10



Felicity
Shun

11



Barbara
Rae

24



John
Kindness

25



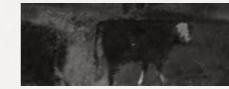
Maura
Lynch

26



Thomas
Carr OBE

27



Rachel
Joynt

28



Cecil
Maguire

29



Corrina
Askin

12



Gabhann
Dunne

13



Sarah
Longley

14



Aoife
Layton

15



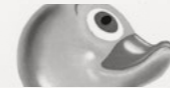
Bono
et al.

16



John
Kindness

17



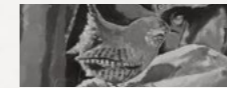
Sven
Sandberg

30



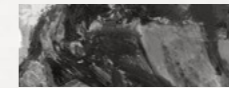
Jeffrey
Morgan

31



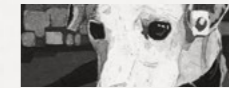
Dara
Vallely

32



Colin
Martin

33



Linda
McWha

34



Eamonn
McCrorry

35



Kelvin
Mann

18



Ivan
Frew

19



Joanna
Martin

20



Rebecca
Homfray

21



James
MacIntyre

22



Tighe
O'Donoghue/Ross

23



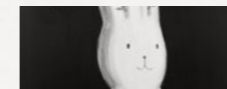
Tighe
O'Donoghue/Ross

36



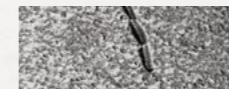
Atsushi
Kaga

37



Yvette
Monahan

38



Pen
Jones

39



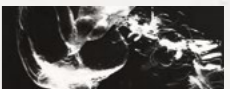
Bruce C.
Marshall

40



Frieda
Meaney

41



ACKNOWLEDGEMENTS

ADMHÁLACHA

Exhibition curated by *An taispeántas á léiriú ag:* Teresa Eddery and Jacquie Moore, OPW

Organised in partnership with Department of Finance *Arna eagrú i gcomhar leis an Roinn Airgeadais:* Duncan Morris, Nigel Bonar, Lynsay Hill

Assisted by the OPW Art Management team *Le cúnamh ó fhoireann Bainistíochta Ealaíne an OPW:* Laura Buckley, Linda Connolly, Dorothea Depner, Louise Kelly, Davey Moor, Marian O'Brien, Avril Percival

OPW student research team *Foireann taighde mac léinn an OPW:* Lochlainn Byrne, Mia Hayes, Robyn Young

Photography *Grianghrafadóireacht:*

OPW: Gillian Buckley

DoF: Bryan Rutledge

A sincere thanks to the included artists and their representative galleries for assistance with this exhibition.

Buíochas ó chroí leis na healaíontóirí atá san áireamh agus lena ndánlanna ionadaíocha as an gcúnamh a thug siad leis an taispeántas seo.

RESEARCH RESOURCES

ACMHAINNÍ TAIGHDE

aoifelayton.com

artuk.org

berlinopticiansgallery.com

bpw.org.uk

barbararae.com

chimera-gallery.com

corkprintmakers.ie

curlewcottagedesign.co.uk

daravallely.com

emccrory.com

friedameaney.com

gabhannundunne.ie

gibbonsnicolas.com

graphicstudiodublin.com

janetmullarney.com

kelvinmann.com

kilcockartgallery.ie

lavelleartgallery.ie

leinsterprintstudio.com

molesworthgallery.com

motherstankstation.com

odonoghueross.com

penandmerve.com

racheljoynt.com

sarahlongley.co.uk

seacourt-ni.org.uk

sofinearteditions.com

solomonfineart.ie

stoneyroadpress.ie

svensandberg.com

taylorgalleries.ie

yvette-monahan.com



Phylum: Chori

480ST CA
CARTOLINA

