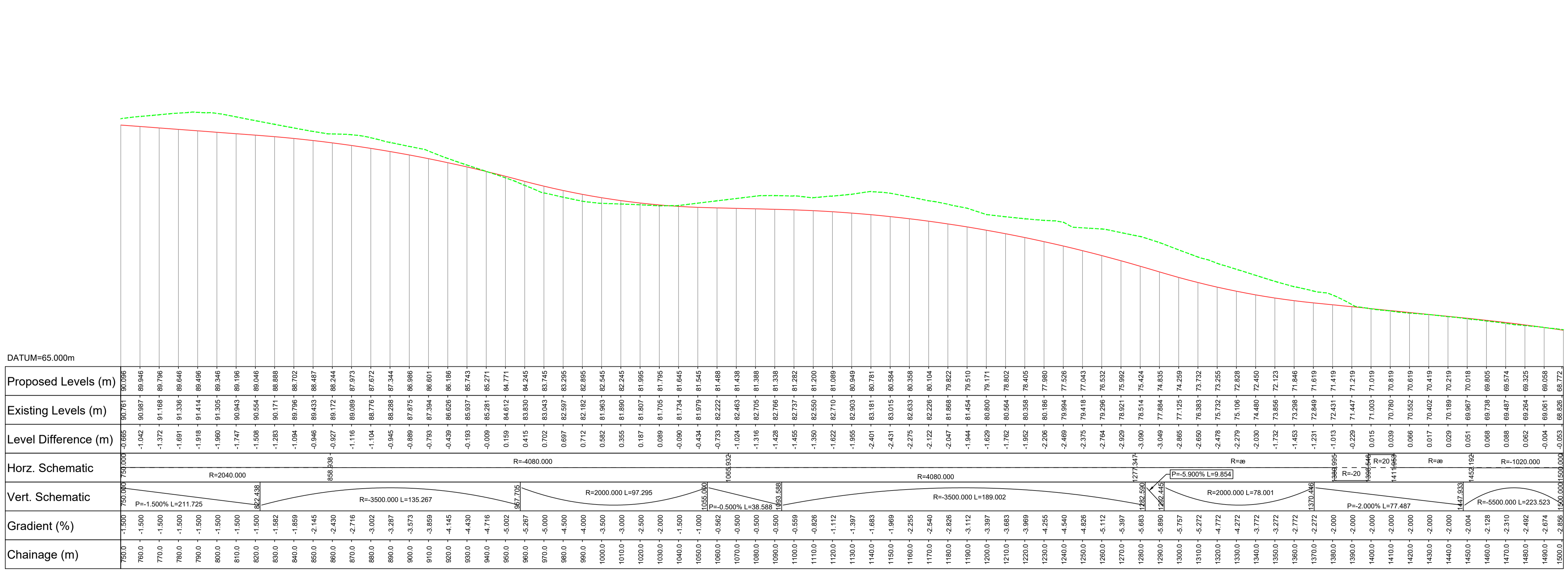


Key
 Earthworks - Cut
 Earthworks - Fill

Key
 Proposed Vertical Alignment
 Existing Ground Profile

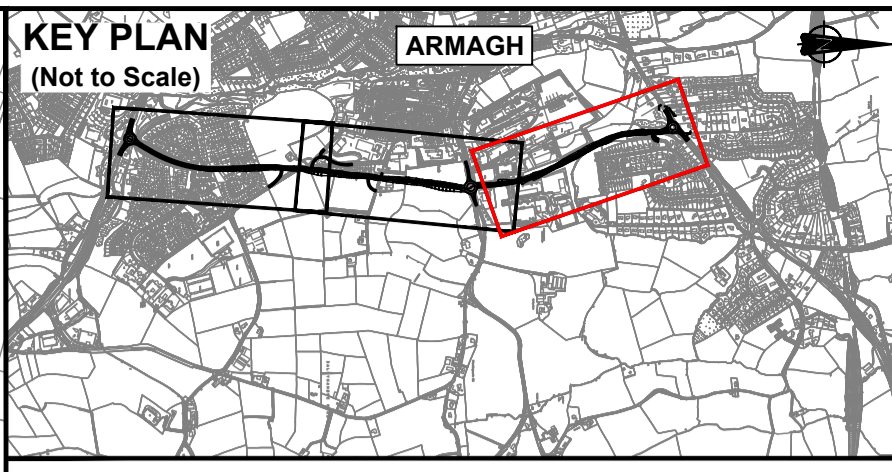
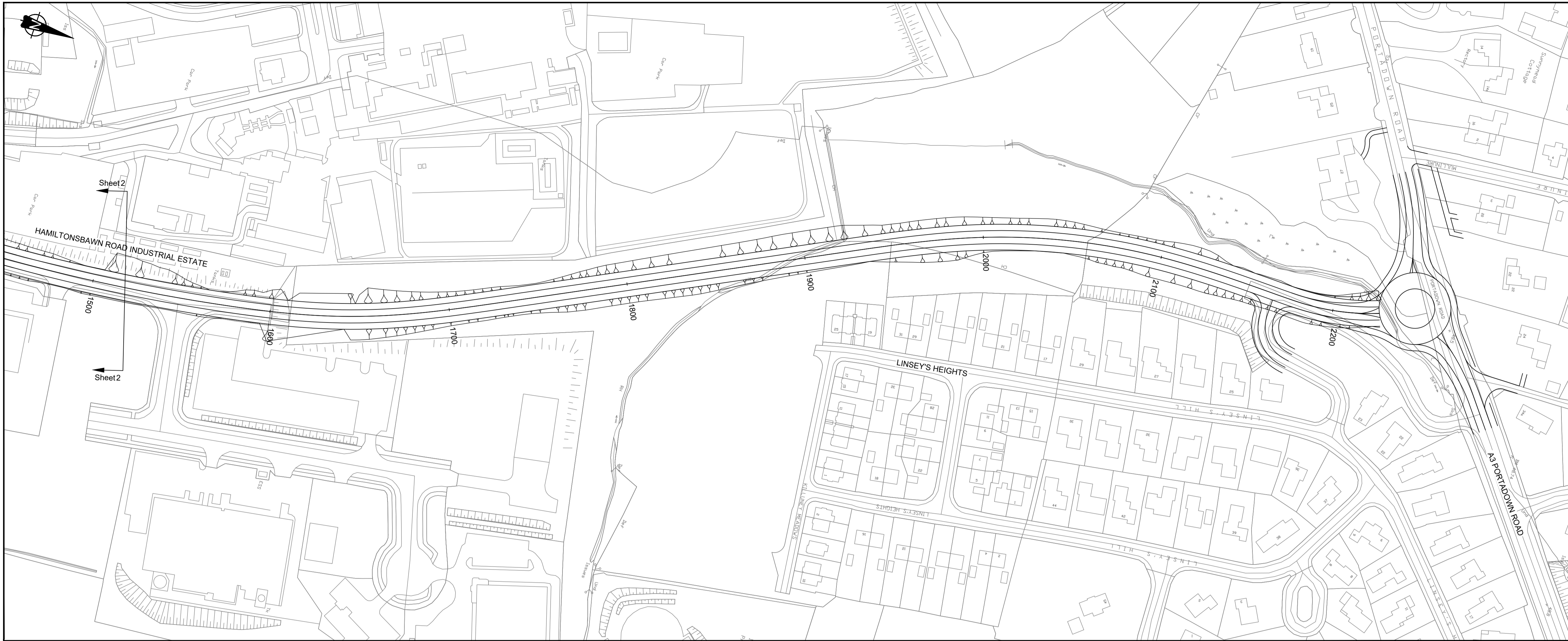


Rev	Amendment	By	Check	App	Date

This material is based upon Crown Copyright and is reproduced with the permission of Land and Property Services under delegated authority from the Controller of Her Majesty's Stationery Office, © Crown copyright and database rights NIMA ES&LA214. Unauthorised reproduction infringes, © Crown copyright and may lead to prosecution or civil proceedings.

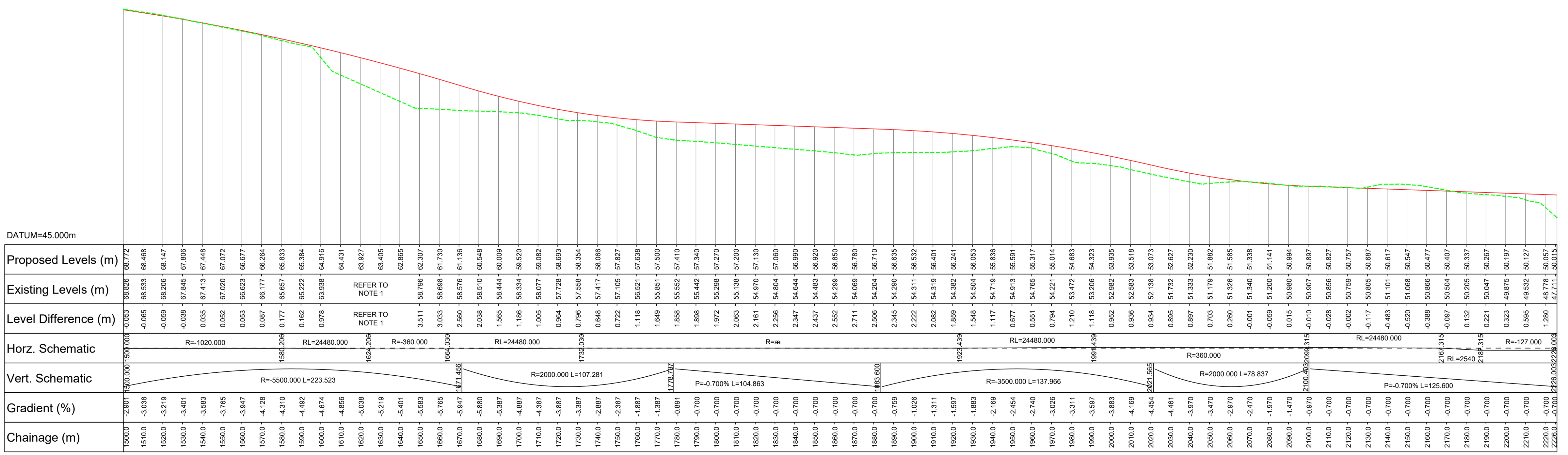


Project Armagh East Link			
Drawing Title Scheme Assessment Report - Stage 2 2007 Option Plan and Profile Sheet 2 of 3			
Scale 1:1250	Drawn SMG	Checked CB	Approved CB
Original Size A1	Date 21/02/2017	Date 10/08/2017	Date 10/08/2017
Drawing Status ISSUE			Subsidiary S0
Drawing Number 1064968-B-D-2004			Revision 0.1



- Key**
- Earthworks - Cut
 - Earthworks - Fill
- Notes**
- Existing Levels in this area (Ch1600m to Ch1650m Inclusive) have been removed due to the anomalies with the topographical survey.

- Key**
- Proposed Vertical Alignment
 - Existing Ground Profile



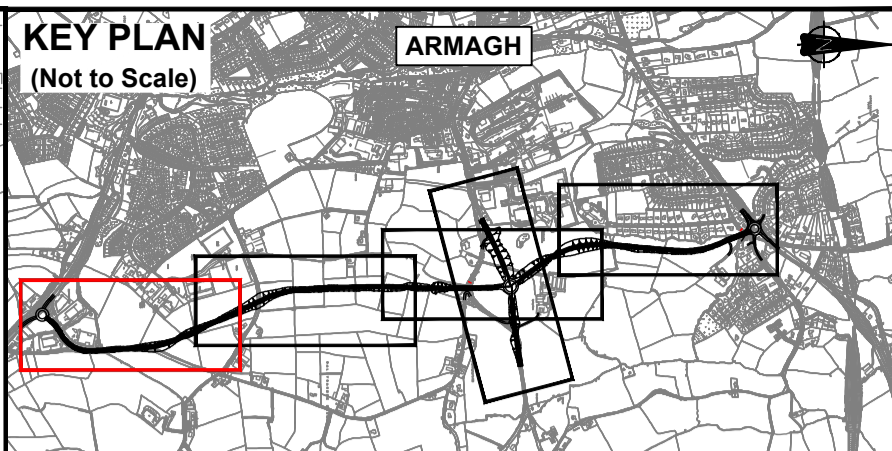
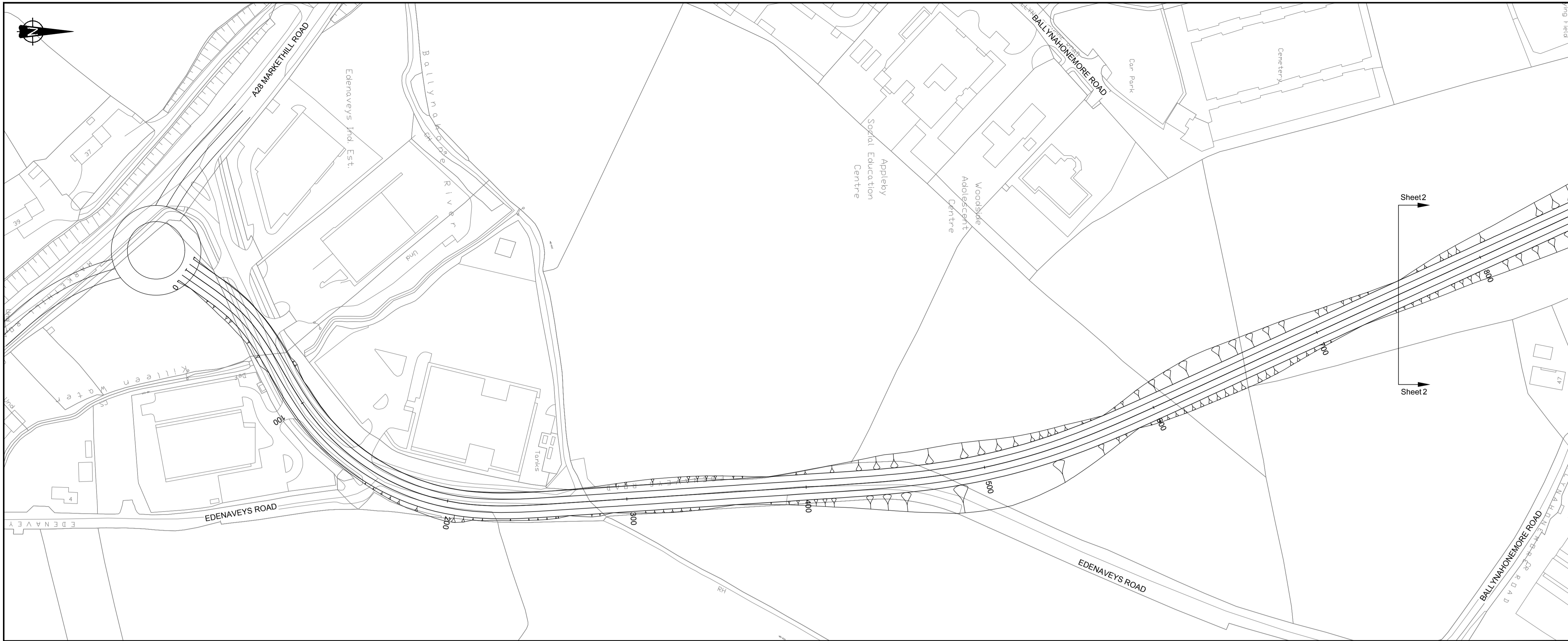
Scale: Horiz 1:1250 Vert 1:250

Rev	Amendment	By	Check	App	Date

This material is based upon Crown Copyright and is reproduced with the permission of Land and Property Services under delegated authority from the Controller of Her Majesty's Stationery Office, © Crown copyright and database rights NIMA ES&LA214. Unauthorised reproduction infringes, © Crown copyright and may lead to prosecution or civil proceedings.

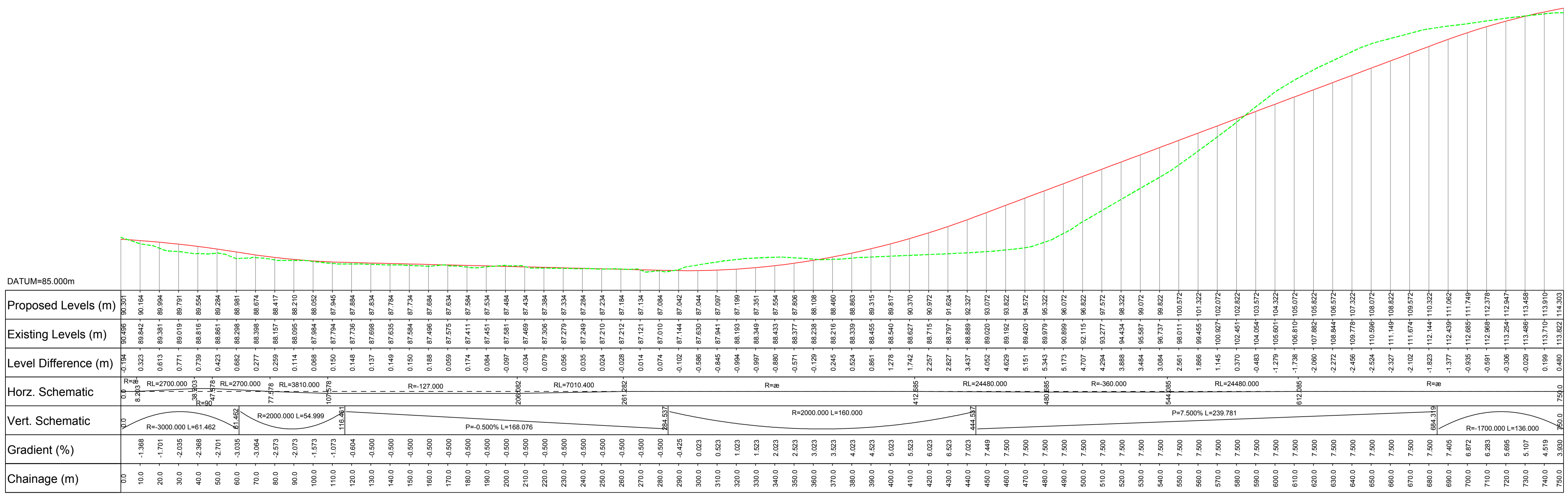


Project			
Armagh East Link			
Drawing Title			
Scheme Assessment Report - Stage 2 2007 Option Plan and Profile Sheet 3 of 3			
Scale:	Drawn:	Checked:	Approved:
1:1250	SMG	CB	CB
Original Size:	Date:	Date:	Date:
A1	21/02/2017	10/08/2017	10/08/2017
Drawing Status			Substability
ISSUE			S0
Drawing Number			Revision
1064968-B-D-2005			0.1



- Key**
- Earthworks - Cut
 - Earthworks - Fill
 - Proposed Structure

- Key**
- Proposed Vertical Alignment
 - Existing Ground Profile



Rev	Amendment	By	Check	App	Date

This material is based upon Crown Copyright and is reproduced with the permission of Land and Property Services under delegated authority from the Controller of Her Majesty's Stationery Office, © Crown copyright and database rights NIMA ES&LA214. Unauthorised reproduction infringes, © Crown copyright and may lead to prosecution or civil proceedings.



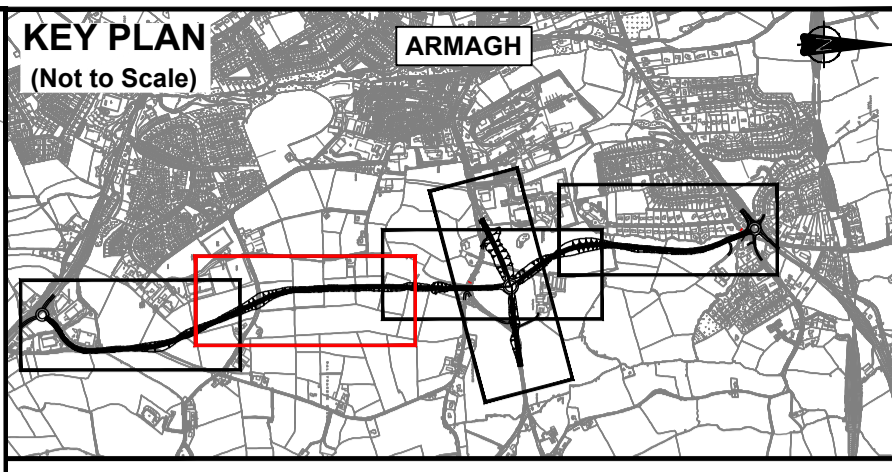
Project: **Armagh East Link**

Drawing Title: **Scheme Assessment Report - Stage 2 Option 12 Plan and Profile Sheet 1 of 5**

Scale:	Drawn:	Checked:	Approved:
1:1250	SMG	CB	CB

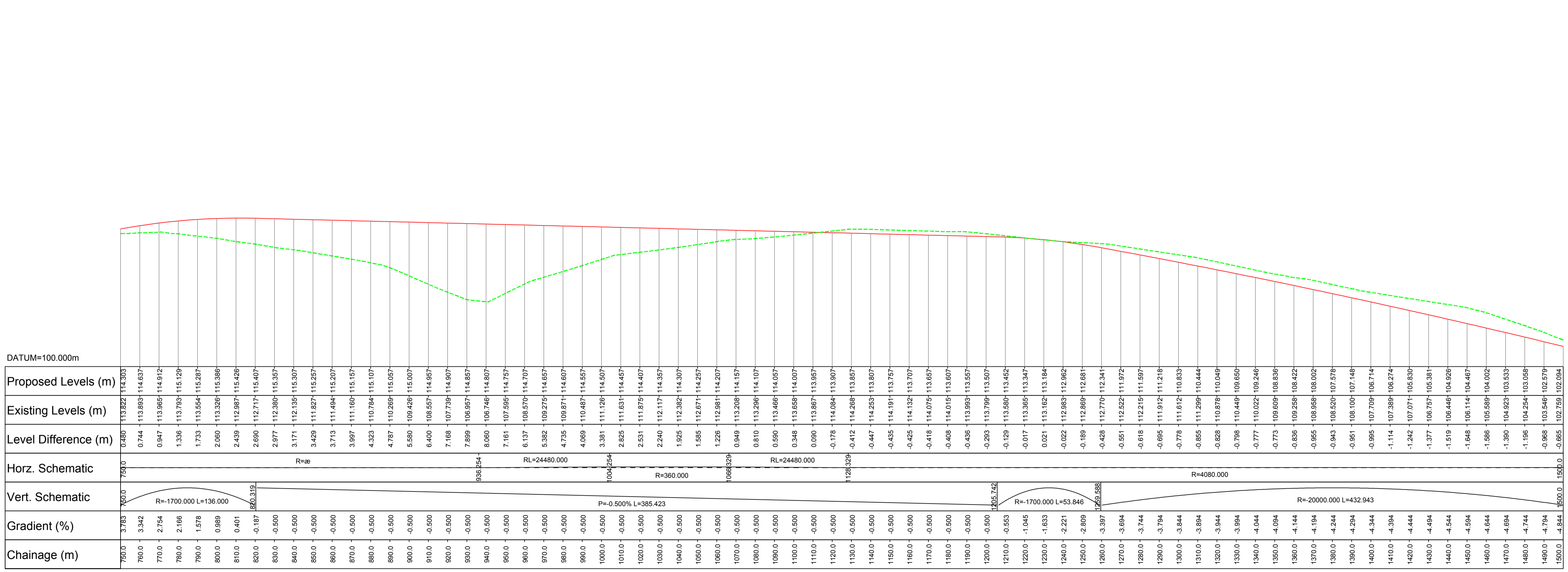
Original Size	Date	Date	Date
A1	09/02/2017	10/08/2017	10/08/2017

Drawing Number: **1064968-B-D-2006** Revision: **0.1**



Key
 [Hatched Area] Earthworks - Cut
 [Hatched Area] Earthworks - Fill
 [Blue Line] Proposed Structure

Key
 [Red Line] Proposed Vertical Alignment
 [Green Line] Existing Ground Profile



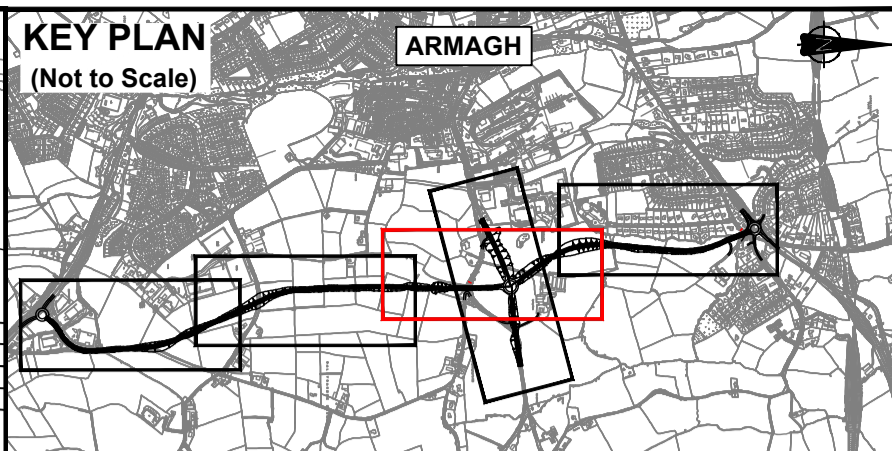
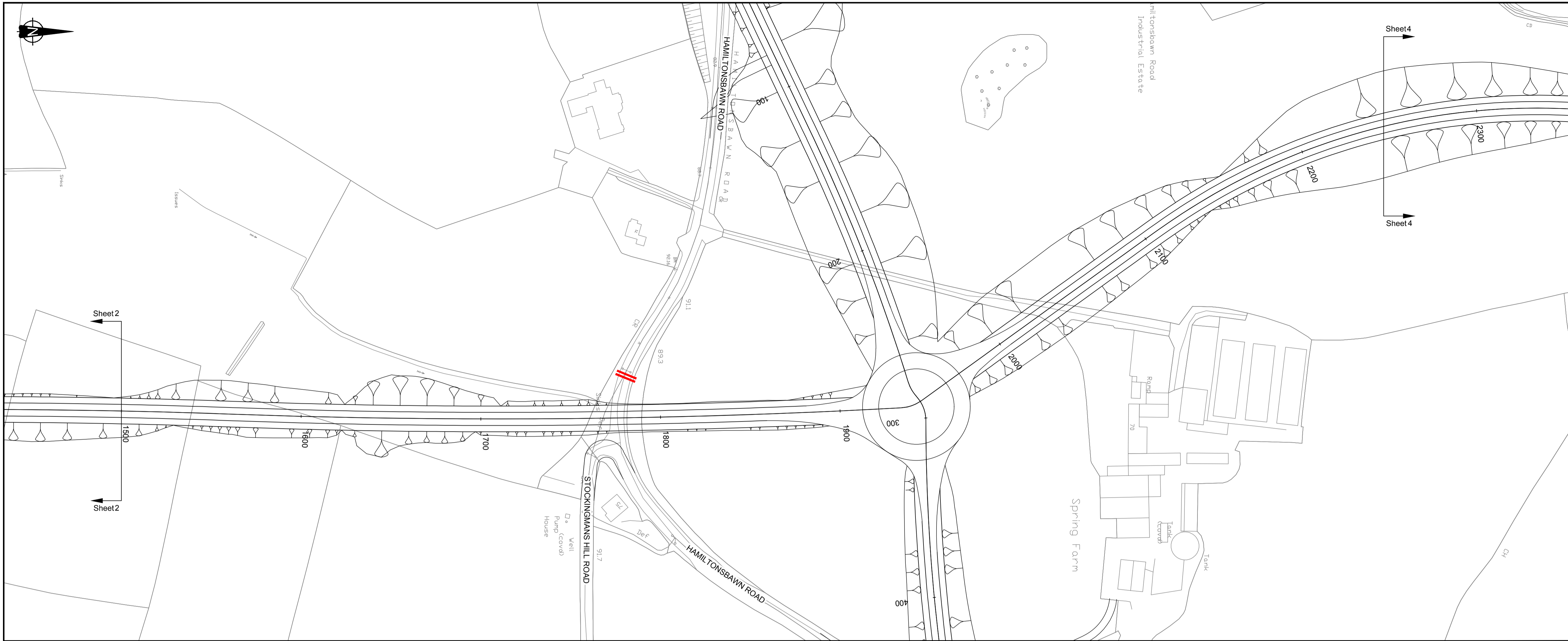
Rev	Amendment	By	Check	App	Date

This material is based upon Crown Copyright and is reproduced with the permission of Land and Property Services under delegated authority from the Controller of Her Majesty's Stationery Office, © Crown copyright and database rights NIMA ES&LA214. Unauthorised reproduction infringes, © Crown copyright and may lead to prosecution or civil proceedings.



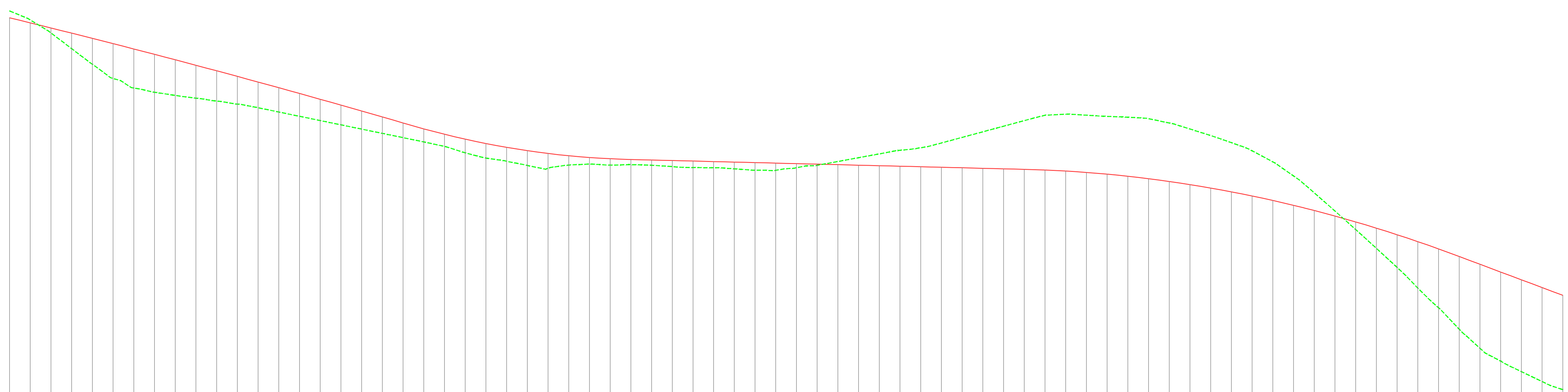
Project			
Armagh East Link			
Drawing Title			
Scheme Assessment Report - Stage 2 Option 12 Plan and Profile Sheet 2 of 5			
Scale	Drawn	Checked	Approved
1:1250	SMG	CB	CB
Original Size	Date	Date	Date
A1	09/02/2017	10/08/2017	10/08/2017
Drawing Status			Subability
ISSUE			S0
Drawing Number			Revision
1064968-B-D-2007			0.1

Scale: Horiz 1:1250 Vert 1:250



- Key**
- Earthworks - Cut
 - Earthworks - Fill
 - Proposed Road to be Stopped Up

- Key**
- Proposed Vertical Alignment
 - Existing Ground Profile



DATUM=65.000m

Proposed Levels (m)	Existing Levels (m)	Level Difference (m)	Horz. Schematic	Vert. Schematic	Gradient (%)	Chainage (m)
1500.0	1500.0	0.000	R=4080.000	R=20000.000 L=432.943	-4.857	1500.0
1510.0	1510.0	0.000			-4.894	1510.0
1520.0	1520.0	0.000			-4.944	1520.0
1530.0	1530.0	0.000			-4.984	1530.0
1540.0	1540.0	0.000			-5.044	1540.0
1550.0	1550.0	0.000			-5.094	1550.0
1560.0	1560.0	0.000			-5.144	1560.0
1570.0	1570.0	0.000			-5.184	1570.0
1580.0	1580.0	0.000			-5.244	1580.0
1590.0	1590.0	0.000			-5.294	1590.0
1600.0	1600.0	0.000			-5.344	1600.0
1610.0	1610.0	0.000			-5.394	1610.0
1620.0	1620.0	0.000			-5.444	1620.0
1630.0	1630.0	0.000			-5.484	1630.0
1640.0	1640.0	0.000			-5.544	1640.0
1650.0	1650.0	0.000			-5.594	1650.0
1660.0	1660.0	0.000			-5.644	1660.0
1670.0	1670.0	0.000			-5.694	1670.0
1680.0	1680.0	0.000			-5.744	1680.0
1690.0	1690.0	0.000			-5.794	1690.0
1700.0	1700.0	0.000			-5.891	1700.0
1710.0	1710.0	0.000			-5.209	1710.0
1720.0	1720.0	0.000			-4.709	1720.0
1730.0	1730.0	0.000			-4.209	1730.0
1740.0	1740.0	0.000			-3.709	1740.0
1750.0	1750.0	0.000			-3.209	1750.0
1760.0	1760.0	0.000			-2.709	1760.0
1770.0	1770.0	0.000			-2.209	1770.0
1780.0	1780.0	0.000			-1.709	1780.0
1790.0	1790.0	0.000			-1.209	1790.0
1800.0	1800.0	0.000			-0.710	1800.0
1810.0	1810.0	0.000			-0.500	1810.0
1820.0	1820.0	0.000			-0.500	1820.0
1830.0	1830.0	0.000			-0.500	1830.0
1840.0	1840.0	0.000			-0.500	1840.0
1850.0	1850.0	0.000			-0.500	1850.0
1860.0	1860.0	0.000			-0.500	1860.0
1870.0	1870.0	0.000			-0.500	1870.0
1880.0	1880.0	0.000			-0.500	1880.0
1890.0	1890.0	0.000			-0.500	1890.0
1900.0	1900.0	0.000			-0.500	1900.0
1910.0	1910.0	0.000			-0.500	1910.0
1920.0	1920.0	0.000			-0.500	1920.0
1930.0	1930.0	0.000			-0.500	1930.0
1940.0	1940.0	0.000			-0.500	1940.0
1950.0	1950.0	0.000			-0.500	1950.0
1960.0	1960.0	0.000			-0.500	1960.0
1970.0	1970.0	0.000			-0.500	1970.0
1980.0	1980.0	0.000			-0.500	1980.0
1990.0	1990.0	0.000			-0.500	1990.0
2000.0	2000.0	0.000			-0.674	2000.0
2010.0	2010.0	0.000			-1.007	2010.0
2020.0	2020.0	0.000			-1.341	2020.0
2030.0	2030.0	0.000			-1.674	2030.0
2040.0	2040.0	0.000			-2.007	2040.0
2050.0	2050.0	0.000			-2.341	2050.0
2060.0	2060.0	0.000			-2.674	2060.0
2070.0	2070.0	0.000			-3.007	2070.0
2080.0	2080.0	0.000			-3.341	2080.0
2090.0	2090.0	0.000			-3.674	2090.0
2100.0	2100.0	0.000			-4.007	2100.0
2110.0	2110.0	0.000			-4.341	2110.0
2120.0	2120.0	0.000			-4.674	2120.0
2130.0	2130.0	0.000			-5.007	2130.0
2140.0	2140.0	0.000			-5.341	2140.0
2150.0	2150.0	0.000			-5.674	2150.0
2160.0	2160.0	0.000			-6.007	2160.0
2170.0	2170.0	0.000			-6.341	2170.0
2180.0	2180.0	0.000			-6.674	2180.0
2190.0	2190.0	0.000			-7.007	2190.0
2200.0	2200.0	0.000			-7.341	2200.0
2210.0	2210.0	0.000			-7.500	2210.0
2220.0	2220.0	0.000			-7.500	2220.0
2230.0	2230.0	0.000			-7.500	2230.0
2240.0	2240.0	0.000			-7.500	2240.0
2250.0	2250.0	0.000			-7.500	2250.0

Scale: Horiz 1:1250 Vert 1:250

Rev	Amendment	By	Check	App	Date

This material is based upon Crown Copyright and is reproduced with the permission of Land and Property Services under delegated authority from the Controller of Her Majesty's Stationery Office, © Crown copyright and database rights NIMA ES&LA214. Unauthorised reproduction infringes, © Crown copyright and may lead to prosecution or civil proceedings.



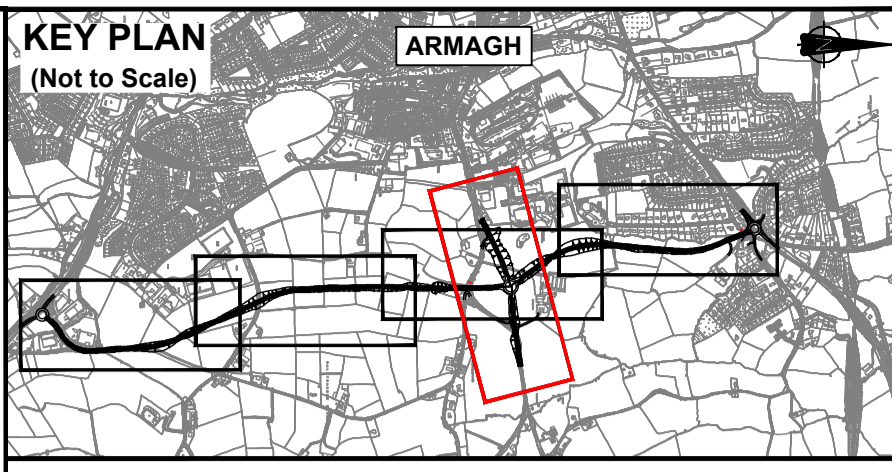
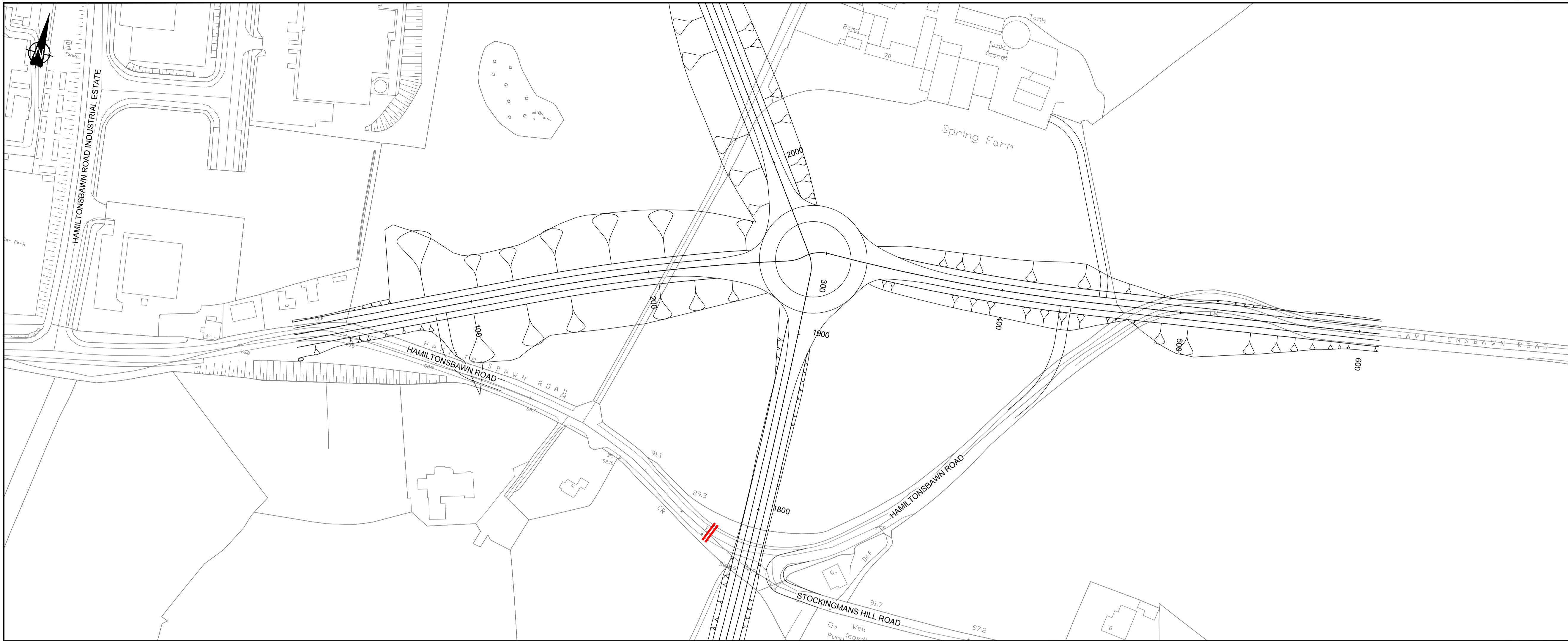
Project: Armagh East Link

Drawing Title: Scheme Assesment Report - Stage 2 Option 12 Plan and Profile Sheet 3 of 5

Scale	Drawn	Checked	Approved
1:1250	SMG	CB	CB

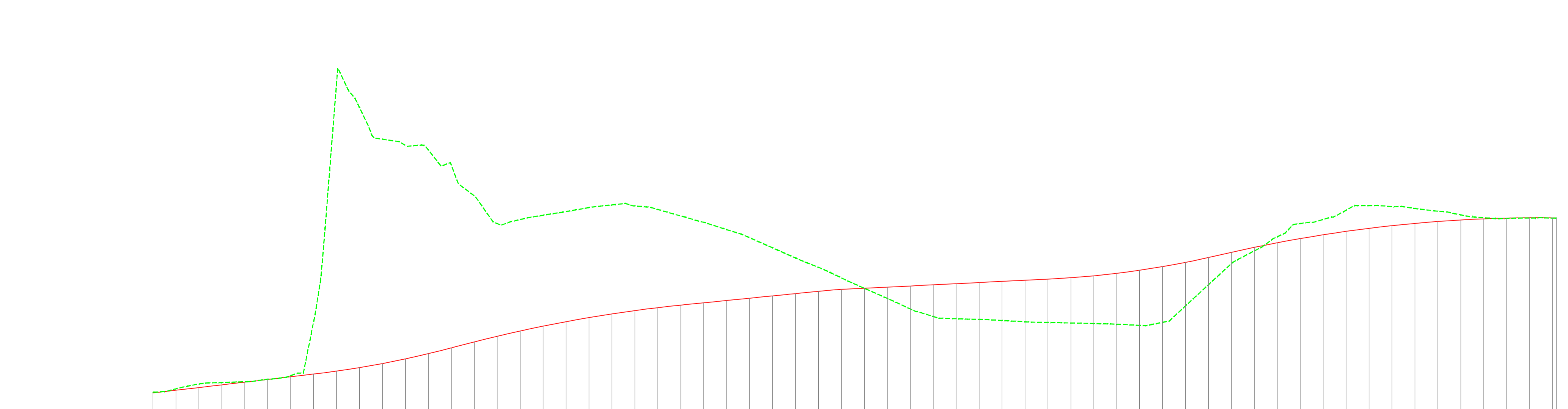
Original Size	Date	Date	Date
A1	09/02/2017	10/08/2017	10/08/2017

Drawing Number: 1064968-B-D-2008 Revision: S0 0.1



- Key**
- Earthworks - Cut
 - Earthworks - Fill
 - Proposed Road to be Stopped Up

- Key**
- Proposed Vertical Alignment
 - Existing Ground Profile



DATUM=75.000m

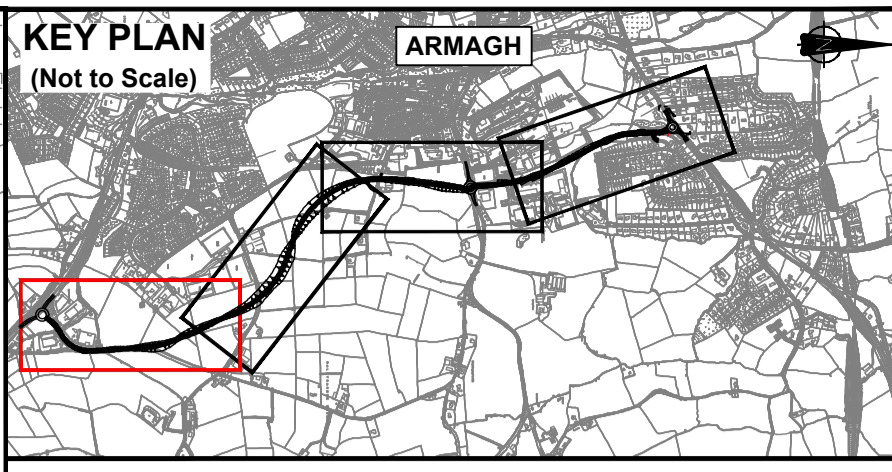
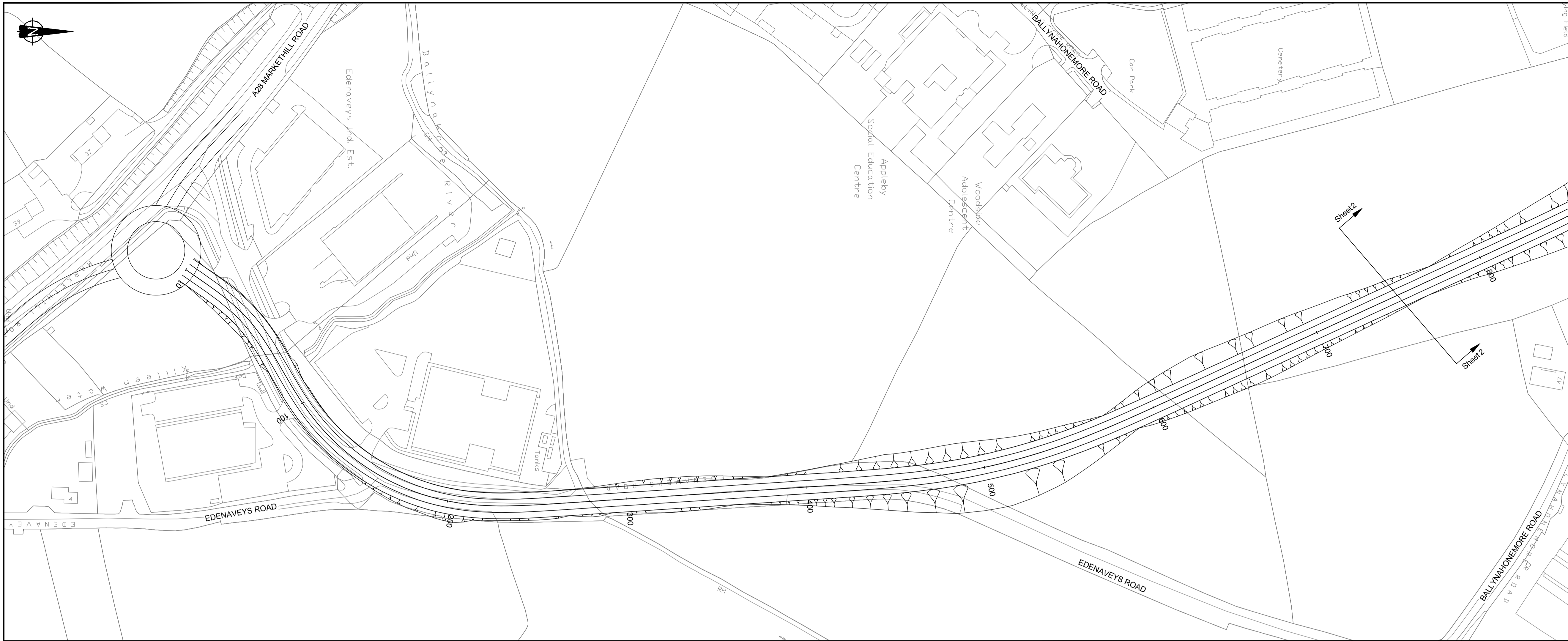
Chainage (m)	Proposed Levels (m)	Existing Levels (m)	Level Difference (m)
0.0	78.805	78.819	-0.014
10.0	79.179	79.055	0.124
20.0	79.605	79.290	0.315
30.0	79.717	79.526	0.191
40.0	79.798	79.761	-0.037
50.0	80.011	79.997	0.014
60.0	80.330	80.232	0.098
70.0	80.637	80.467	0.170
80.0	81.039	80.723	0.316
90.0	81.428	81.029	0.399
100.0	81.805	81.385	0.420
110.0	82.171	81.791	0.380
120.0	82.527	82.246	0.281
130.0	82.874	82.752	0.122
140.0	83.212	83.275	-0.063
150.0	83.541	83.794	-0.253
160.0	83.861	84.314	-0.453
170.0	84.172	84.834	-0.662
180.0	84.474	85.354	-0.880
190.0	84.767	85.874	-1.107
200.0	85.061	86.394	-1.333
210.0	85.346	86.914	-1.568
220.0	85.622	87.434	-1.812
230.0	85.899	87.954	-2.055
240.0	86.167	88.474	-2.307
250.0	86.426	88.994	-2.568
260.0	86.677	89.514	-2.837
270.0	86.920	90.034	-3.114
280.0	87.155	90.554	-3.400
290.0	87.382	91.074	-3.692
300.0	87.601	91.594	-3.993
310.0	87.812	92.114	-4.302
320.0	88.015	92.634	-4.619
330.0	88.210	93.154	-4.944
340.0	88.397	93.674	-5.277
350.0	88.577	94.194	-5.619
360.0	88.750	94.714	-5.964
370.0	88.916	95.234	-6.322
380.0	89.075	95.754	-6.684
390.0	89.228	96.274	-7.050
400.0	89.374	96.794	-7.420
410.0	89.513	97.314	-7.803
420.0	89.645	97.834	-8.190
430.0	89.770	98.354	-8.581
440.0	89.889	98.874	-8.976
450.0	89.999	99.394	-9.395
460.0	90.101	99.914	-9.813
470.0	90.195	100.434	-10.240
480.0	90.281	100.954	-10.677
490.0	90.359	101.474	-11.114
500.0	90.429	101.994	-11.561
510.0	90.491	102.514	-12.018
520.0	90.545	103.034	-12.485
530.0	90.591	103.554	-12.962
540.0	90.629	104.074	-13.449
550.0	90.659	104.594	-13.936
560.0	90.681	105.114	-14.434
570.0	90.695	105.634	-14.942
580.0	90.701	106.154	-15.451
590.0	90.699	106.674	-15.971
600.0	90.689	107.194	-16.502
610.0	90.671	107.714	-17.044
620.0	90.645	108.234	-17.587
630.0	90.611	108.754	-18.142
640.0	90.569	109.274	-18.705
650.0	90.519	109.794	-19.275
660.0	90.461	110.314	-19.854
670.0	90.395	110.834	-20.441
680.0	90.321	111.354	-21.036
690.0	90.239	111.874	-21.635
700.0	90.149	112.394	-22.238
710.0	90.051	112.914	-22.844
720.0	89.945	113.434	-23.453
730.0	89.831	113.954	-24.064
740.0	89.709	114.474	-24.677
750.0	89.579	114.994	-25.292
760.0	89.441	115.514	-25.909
770.0	89.295	116.034	-26.528
780.0	89.141	116.554	-27.149
790.0	88.979	117.074	-27.772
800.0	88.809	117.594	-28.397
810.0	88.631	118.114	-29.024
820.0	88.445	118.634	-29.653
830.0	88.251	119.154	-30.284
840.0	88.049	119.674	-30.917
850.0	87.839	120.194	-31.552
860.0	87.621	120.714	-32.189
870.0	87.395	121.234	-32.828
880.0	87.161	121.754	-33.469
890.0	86.919	122.274	-34.112
900.0	86.669	122.794	-34.757
910.0	86.411	123.314	-35.404
920.0	86.145	123.834	-36.053
930.0	85.871	124.354	-36.704
940.0	85.589	124.874	-37.357
950.0	85.299	125.394	-38.012
960.0	85.001	125.914	-38.669
970.0	84.695	126.434	-39.328
980.0	84.381	126.954	-40.000
990.0	84.059	127.474	-40.674
1000.0	83.729	127.994	-41.350

Rev	Amendment	By	Check	App	Date

This material is based upon Crown Copyright and is reproduced with the permission of Land and Property Services under delegated authority from the Controller of Her Majesty's Stationery Office, © Crown copyright and database rights NIMA ES&LA214. Unauthorised reproduction infringes, © Crown copyright and may lead to prosecution or civil proceedings.

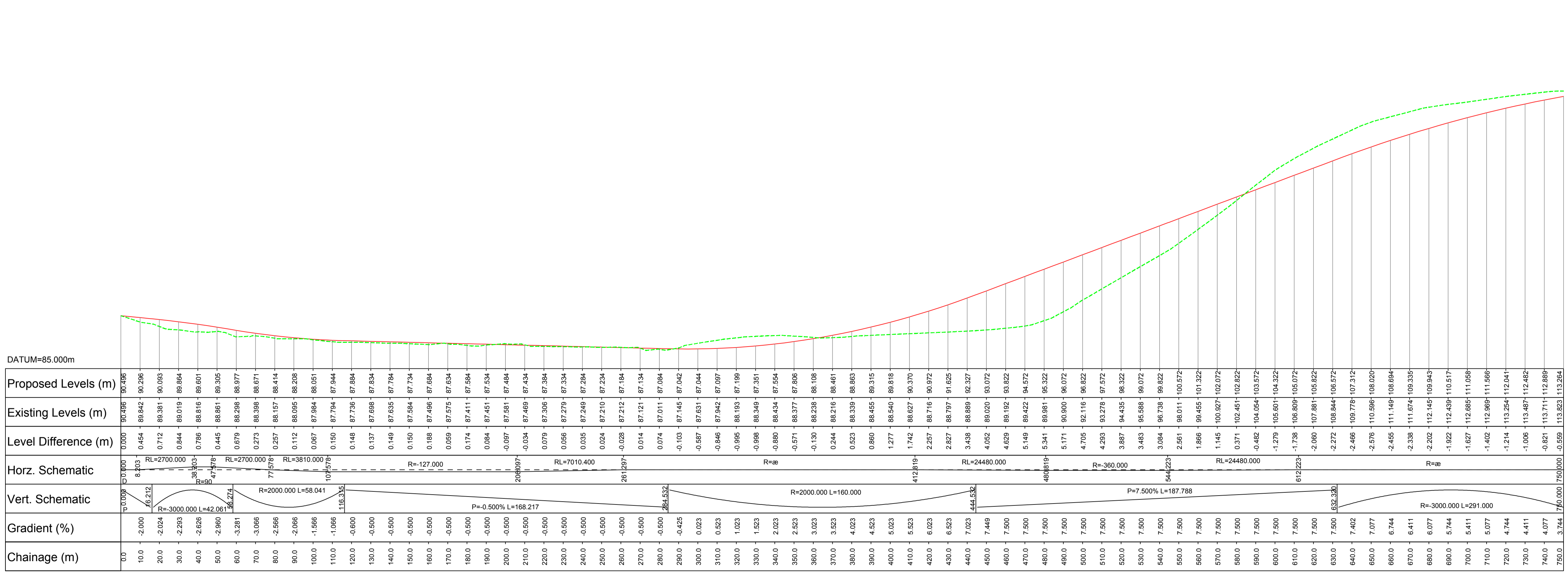


Project			
Armagh East Link			
Drawing Title			
Scheme Assesment Report - Stage 2			
Option 12 Plan and Profile(Hamitonsbawn Road)			
Sheet 5 of 5			
Scale:	Drawn	Checked	Approved
1:1250	SMG	CB	CB
Original Size	Date	Date	Date
A1	09/02/2017	10/08/2017	10/08/2017
Drawing Status			Substability
ISSUE			S0
Drawing Number			Revision
1064968-B-D-2010			0.1



Key
 [Symbol] Earthworks - Cut
 [Symbol] Earthworks - Fill

Key
 [Red Line] Proposed Vertical Alignment
 [Green Dashed Line] Existing Ground Profile



Rev	Amendment	By	Check	App	Date

This material is based upon Crown Copyright and is reproduced with the permission of Land and Property Services under delegated authority from the Controller of Her Majesty's Stationery Office, © Crown copyright and database rights NIMA ES&LA214. Unauthorised reproduction infringes, © Crown copyright and may lead to prosecution or civil proceedings.



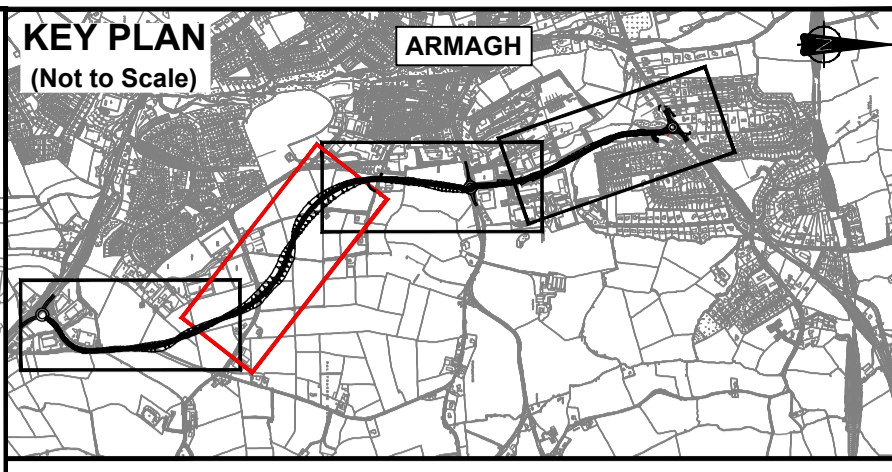
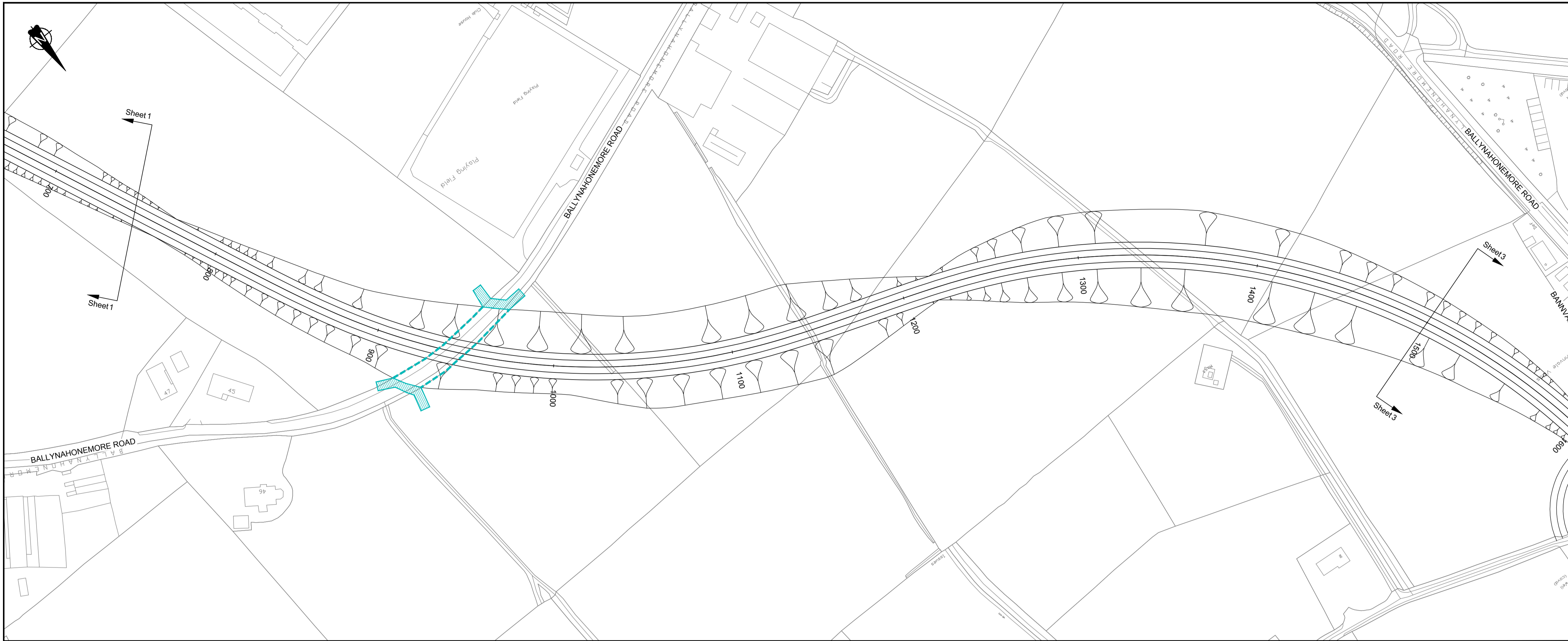
Project: **Armagh East Link**

Drawing Title: **Scheme Assessment Report - Stage 2 Option 16 Plan and Profile Sheet 1 of 4**

Scale:	Drawn:	Checked:	Approved:
1:1250	SMG	CB	CB

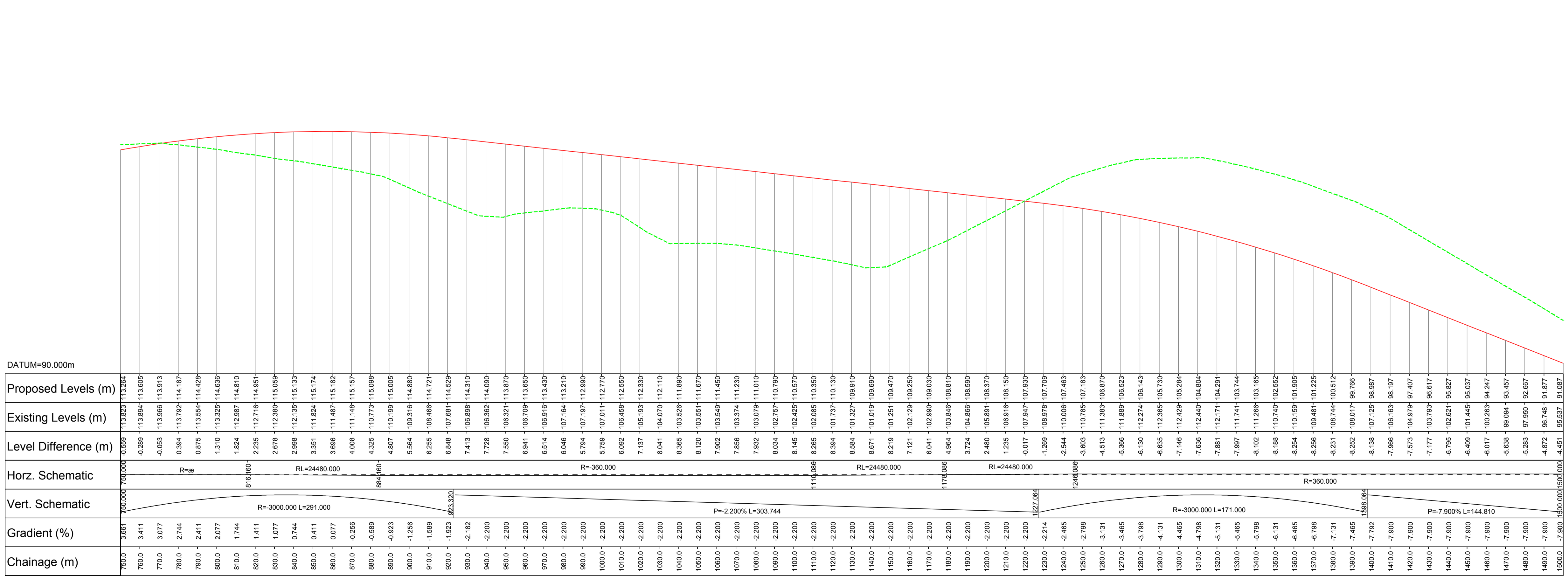
Original Size	Date	Date	Date
A1	16/02/2017	10/08/2017	10/08/2017

Drawing Number: **1064968-B-D-2011** Revision: **S0**



- Key**
- Earthworks - Cut
 - Earthworks - Fill
 - Proposed Structure

- Key**
- Proposed Vertical Alignment
 - Existing Ground Profile

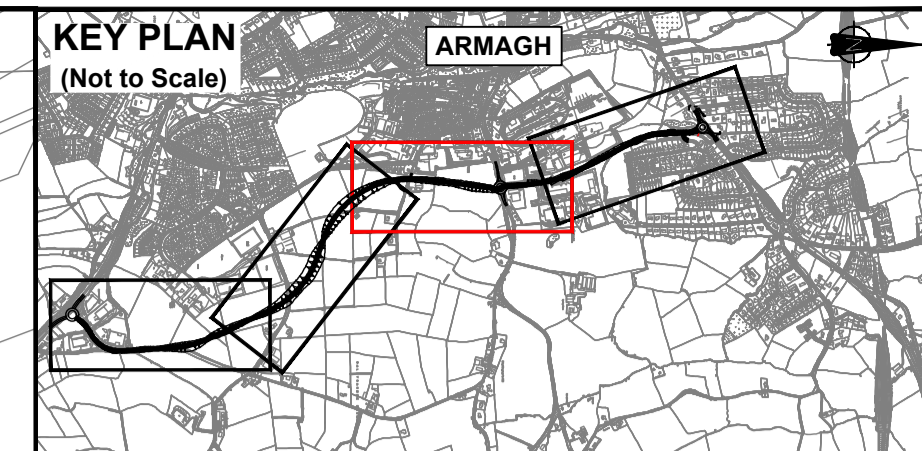
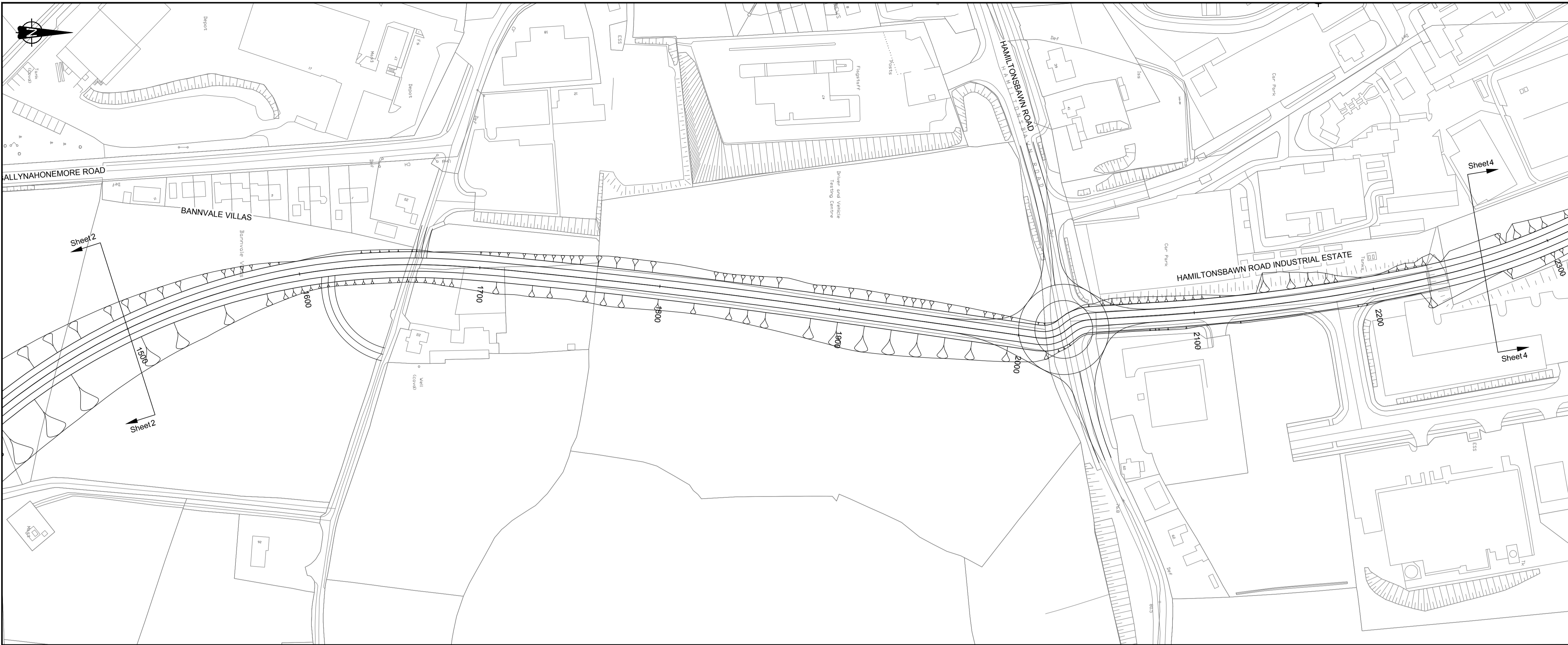


Rev	Amendment	By	Check	App	Date

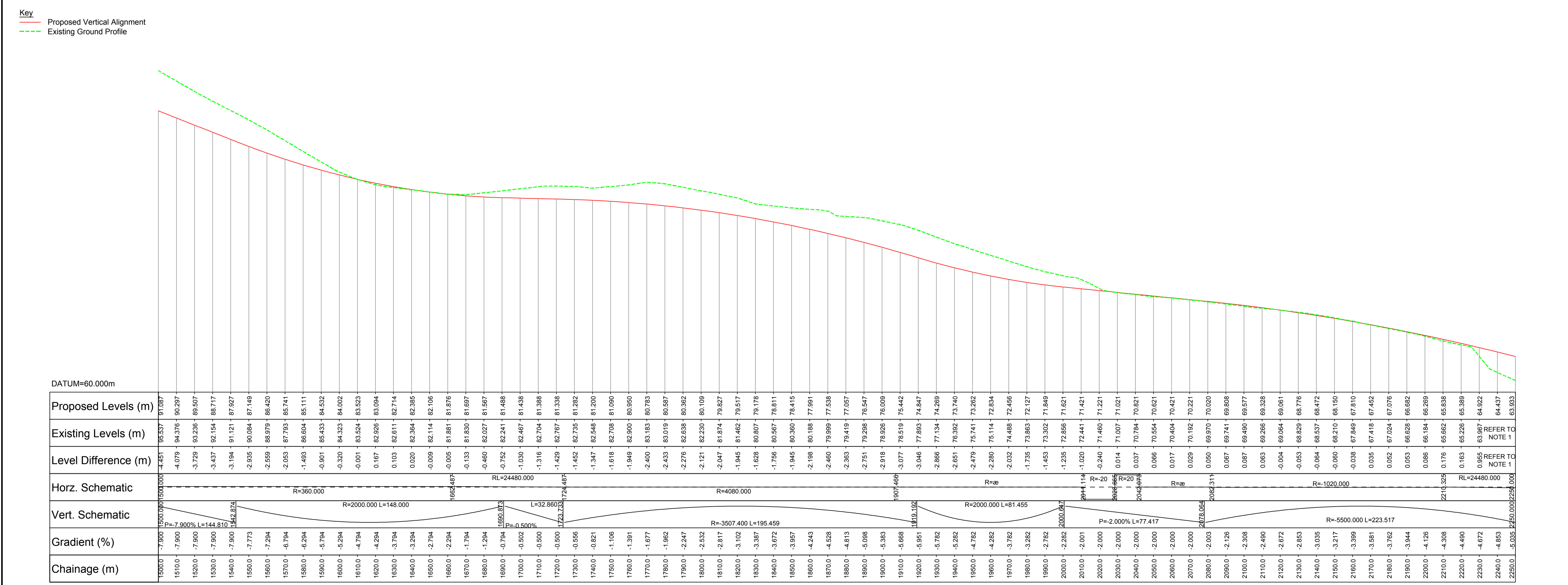
This material is based upon Crown Copyright and is reproduced with the permission of Land and Property Services under delegated authority from the Controller of Her Majesty's Stationery Office, © Crown copyright and database rights NIMA ES&LA214. Unauthorised reproduction infringes, © Crown copyright and may lead to prosecution or civil proceedings.



Project			
Armagh East Link			
Drawing Title			
Scheme Assesment Report - Stage 2			
Option 16 Plan and Profile			
Sheet 2 of 4			
Scale:	Drawn	Checked	Approved
1:1250	SMG	CB	CB
Original Size	Date	Date	Date
A1	16/02/2017	10/08/2017	10/08/2017
Drawing Status			Substability
ISSUE			S0
Drawing Number			Revision
1064968-B-D-2012			0.1



- Key**
- Earthworks - Cut
 - Earthworks - Fill
- Notes**
- Existing Levels in this area (Ch2240m to Ch2270m Inclusive) have been removed due to the anomalies with the topographical survey.



Scale: Horiz 1:1250 Vert 1:250

Rev	Amendment	By	Check	App	Date

This material is based upon Crown Copyright and is reproduced with the permission of Land and Property Services under delegated authority from the Controller of Her Majesty's Stationery Office, © Crown copyright and database rights NIMA ES&LA214. Unauthorised reproduction infringes, © Crown copyright and may lead to prosecution or civil proceedings.



Project				
Armagh East Link				
Drawing Title				
Scheme Assessment Report - Stage 2				
Option 16 Plan and Profile				
Sheet 3 of 4				
Scale:	Drawn:	Checked:	Approved:	
1:1250	SMG	CB	CB	
Original Size	Date	Date	Date	
A1	16/02/2017	10/08/2017	10/08/2017	
Drawing Status				Subsidiary
ISSUE				S0
Drawing Number				Revision
1064968-B-D-2013				0.1