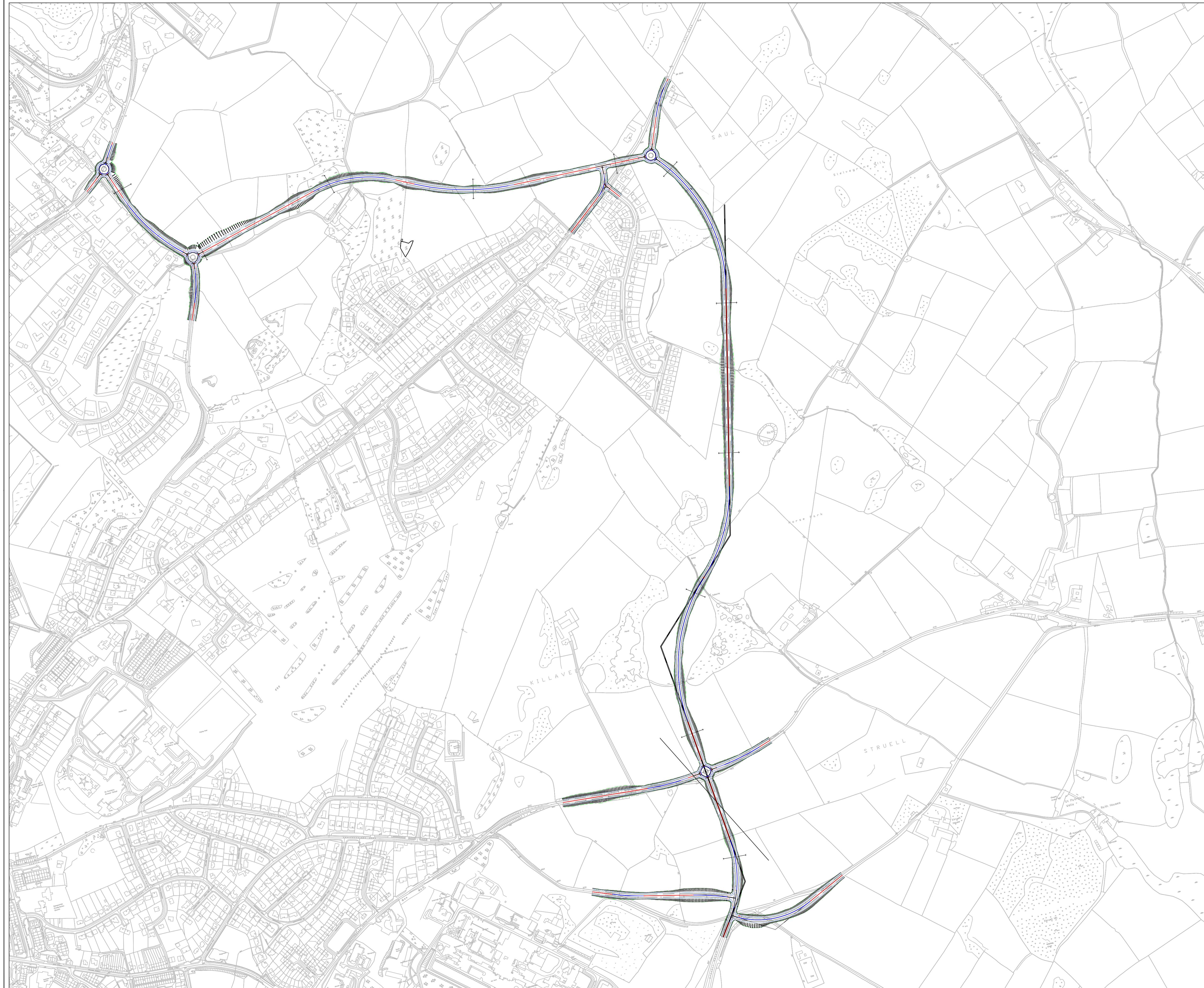


Project Name Downpatrick Eastern Distributor Road

Document Title Feasibility Study



APPENDIX C: DESIGN LAYOUTS & ENGINEERING ANALYSIS

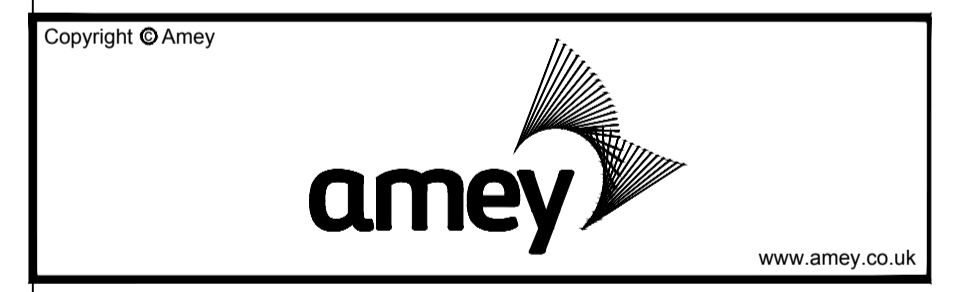


RESIDUAL DESIGN HAZARDS
 (The following information has been collected from Preconstruction Information and the Amey CDM Hazard Management Process.)

1. Please enter project specific hazards here.
- NOTES**
1. Please type your text here. Please type your text here. Please type your text here. Please type your text here. Please type your text here. Please type your text here. Please type your text here.
 2. Please type your text here. Please type your text here. Please type your text here. Please type your text here. Please type your text here. Please type your text here. Please type your text here.
 3. Please type your text here. Please type your text here. Please type your text here. Please type your text here. Please type your text here. Please type your text here. Please type your text here.

DRAFT

Rev	Revision details	Chkd	Appd	Date
Designed:	NM			Date: 18-05-2017
Drawn:	NM			Date: 18-05-2017
Checked:				Date: .
Approved:				Date: .



Client
 DRD Transport NI
 Eastern Division
 Hydebank 4 Hospital Road
 Belfast BT8 8JL (028) 9025 3000



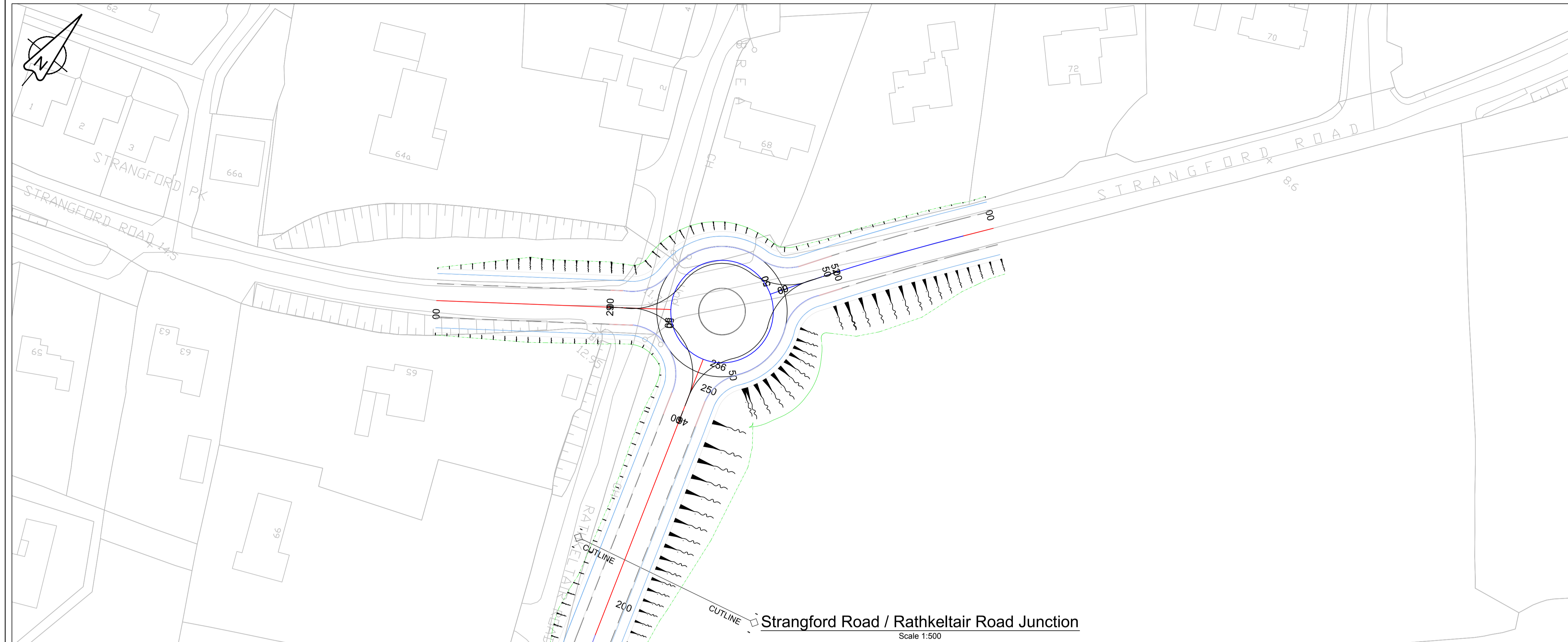

Project Name
Downpatrick Eastern Distributor Road

Drawing Title
Scheme

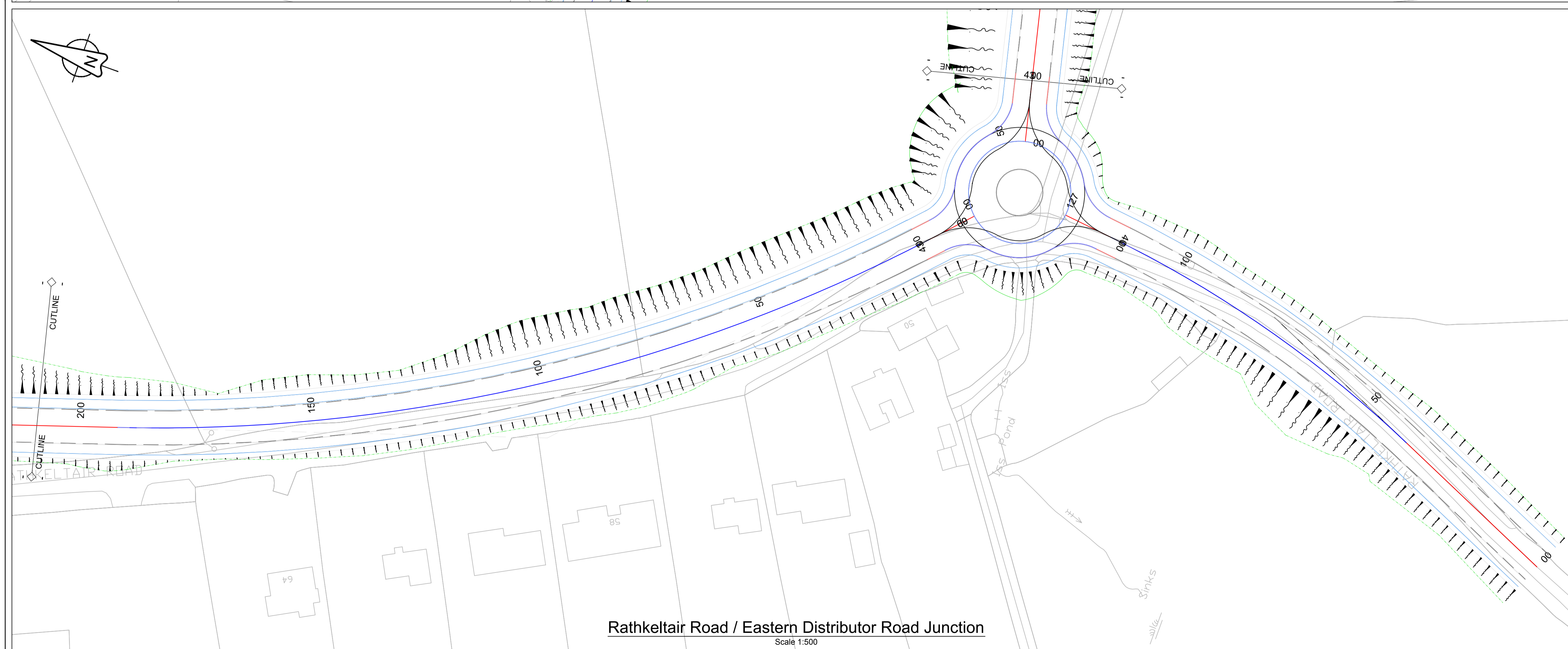
Original Drawing Size : A1 Scale : NTS
 Dimensions : -

Drawing Status
WORK-IN-PROGRESS Suitability
 S0

Drawing No
401425-H-F-108 Rev
 P01.1



Strangford Road / Rathkeltair Road Junction
Scale 1:500



Rathkeltair Road / Eastern Distributor Road Junction
Scale 1:500

RESIDUAL DESIGN HAZARDS
(The following information has been collected from Preconstruction Information and the Amey CDM Hazard Management Process.)

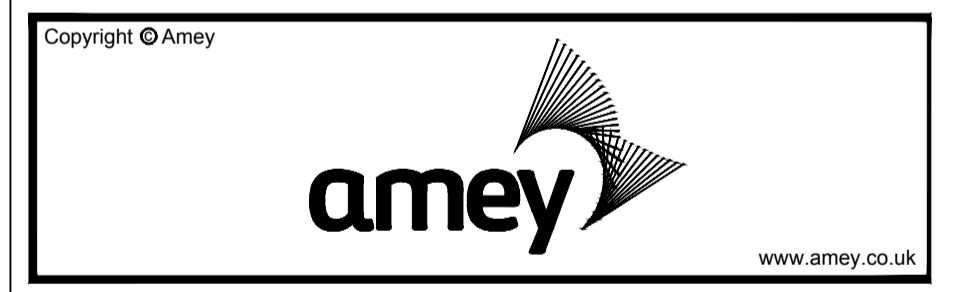
1. Please enter project specific hazards here.

NOTES

1. Please type your text here. Please type your text here. Please type your text here. Please type your text here. Please type your text here. Please type your text here. Please type your text here. Please type your text here. Please type your text here.
2. Please type your text here. Please type your text here. Please type your text here. Please type your text here. Please type your text here. Please type your text here. Please type your text here. Please type your text here. Please type your text here.
3. Please type your text here. Please type your text here. Please type your text here. Please type your text here. Please type your text here. Please type your text here. Please type your text here. Please type your text here. Please type your text here.

DRAFT

Rev	Revision details	Chkd	Appd	Date
Designed:	NM			Date: 18-05-2017
Drawn:	NM			Date: 18-05-2017
Checked:				Date: .
Approved:				Date: .



Client
DRD Transport NI
Eastern Division
Hydebank 4 Hospital Road
Belfast BT8 8JL (028) 9025 3000



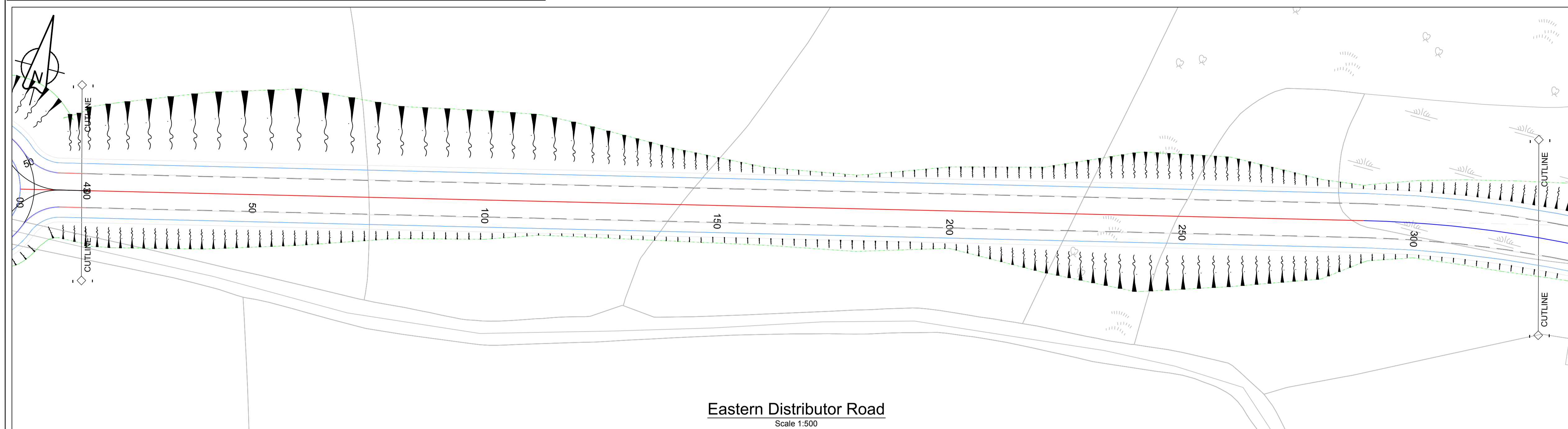

Project Name
Downpatrick Eastern Distributor Road

Drawing Title
**Proposed Layout
Sheet 1 of 2**

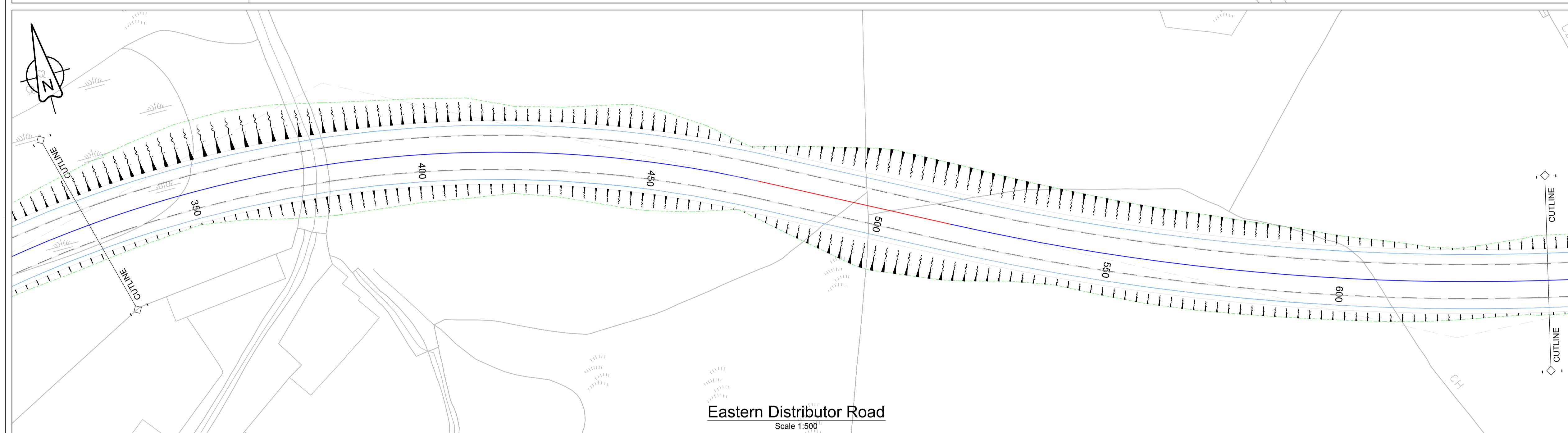
Original Drawing Size : A1 Scale : 1:500
Dimensions : -

Drawing Status
WORK-IN-PROGRESS Suitability
S0

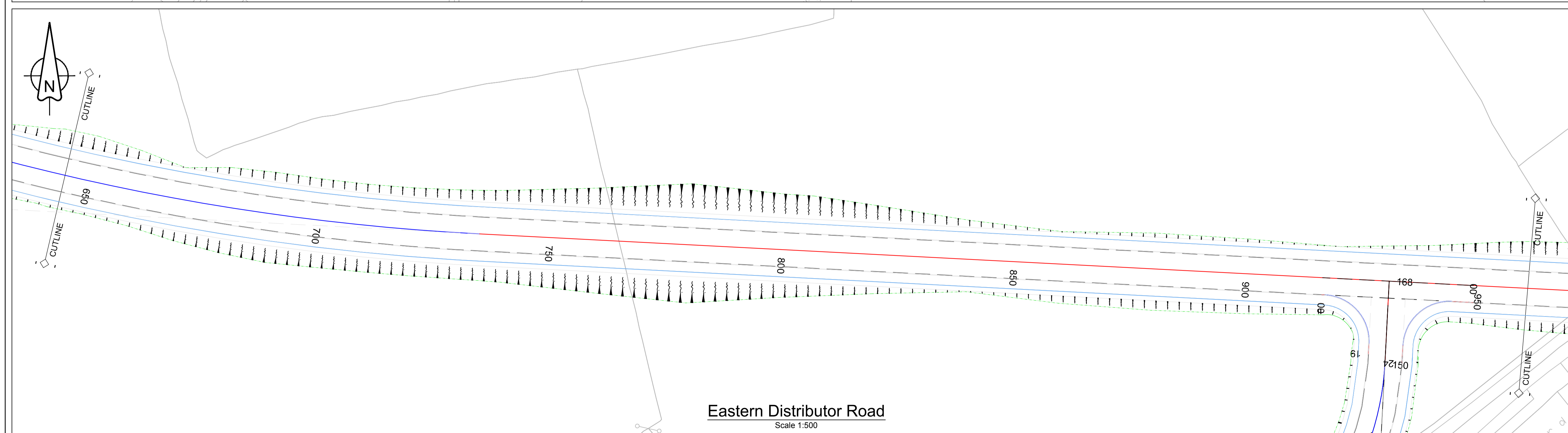
Drawing No
401425-H-F-101 Rev
P01.1



Eastern Distributor Road
Scale 1:500



Eastern Distributor Road
Scale 1:500



Eastern Distributor Road
Scale 1:500

RESIDUAL DESIGN HAZARDS
(The following information has been collected from Preconstruction Information and the Amey CDM Hazard Management Process.)

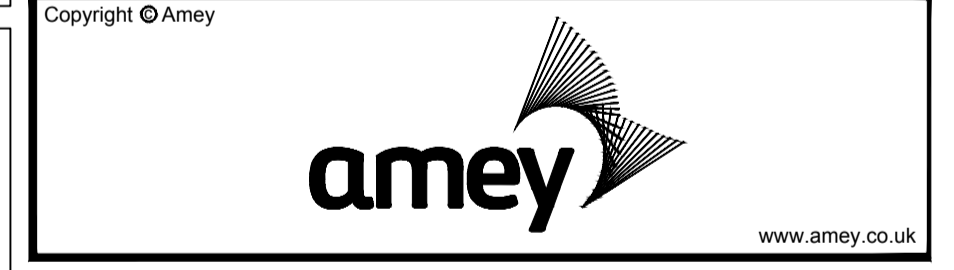
1. Please enter project specific hazards here.

NOTES

1. Please type your text here. Please type your text here. Please type your text here. Please type your text here. Please type your text here. Please type your text here. Please type your text here.
2. Please type your text here. Please type your text here. Please type your text here. Please type your text here. Please type your text here. Please type your text here. Please type your text here.
3. Please type your text here. Please type your text here. Please type your text here. Please type your text here. Please type your text here. Please type your text here. Please type your text here.

DRAFT

Rev	Revision details	Chkd	Appd	Date
Designed:	NM			Date: 18-05-2017
Drawn:	NM			Date: 18-05-2017
Checked:				Date:
Approved:				Date:



Client
DRD Transport NI
Eastern Division
Hydebank 4 Hospital Road
Belfast BT8 8JL (028) 9025 3000



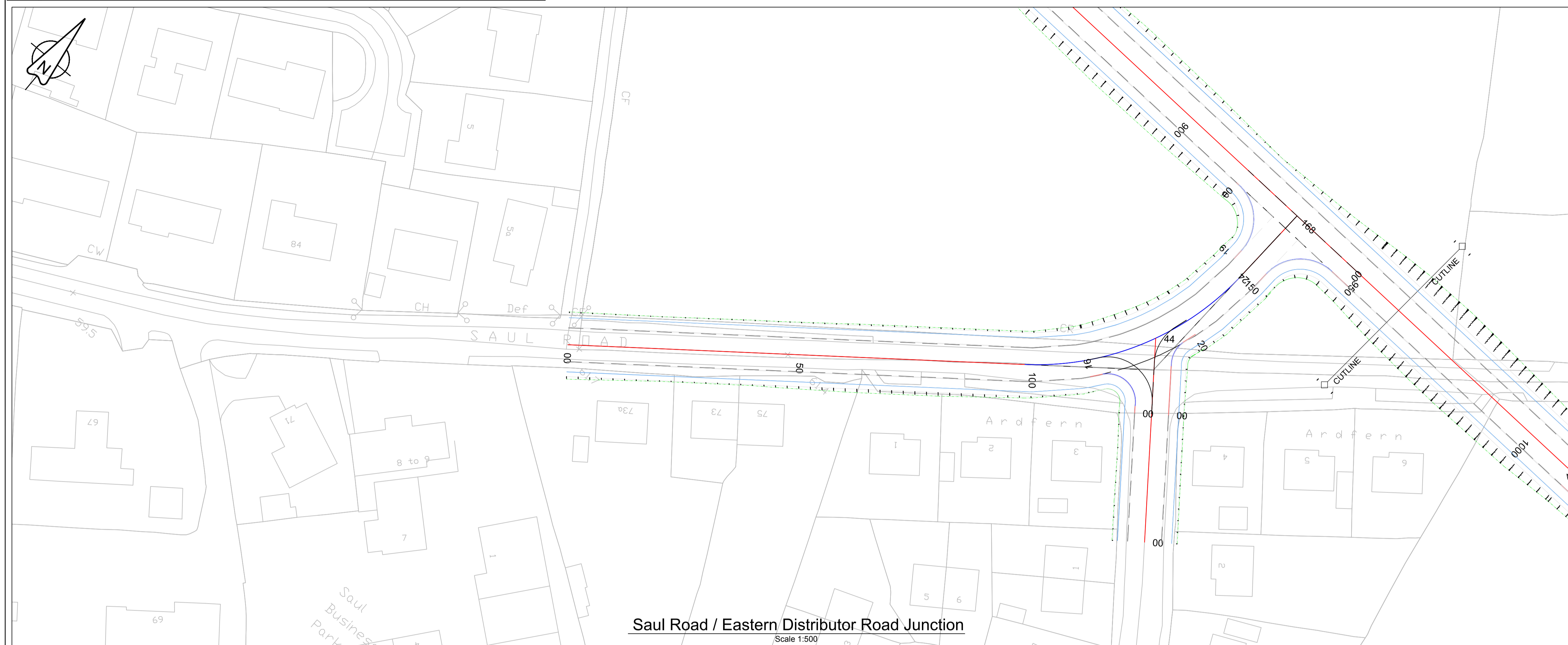

Project Name
Downpatrick Eastern Distributor Road

Drawing Title
Proposed Layout Sheet 2 of 8

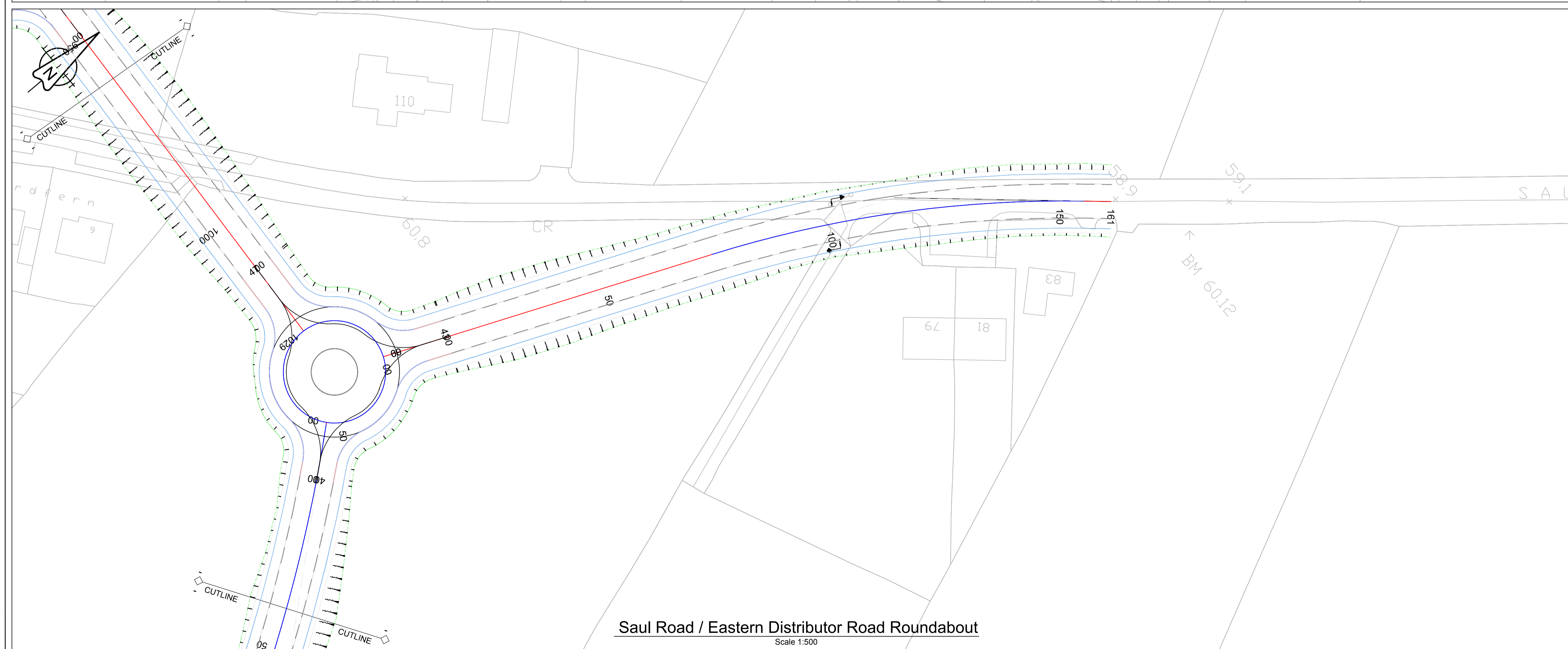
Original Drawing Size : A1	Scale : 1:500
Dimensions : -	

Drawing Status WORK-IN-PROGRESS	Suitability S0
---	-------------------

Drawing No 401425-H-F-102	Rev P01.1
-------------------------------------	--------------



Saul Road / Eastern Distributor Road Junction
Scale 1:500



Saul Road / Eastern Distributor Road Roundabout
Scale 1:500

RESIDUAL DESIGN HAZARDS
(The following information has been collected from Preconstruction Information and the Amey CDM Hazard Management Process.)

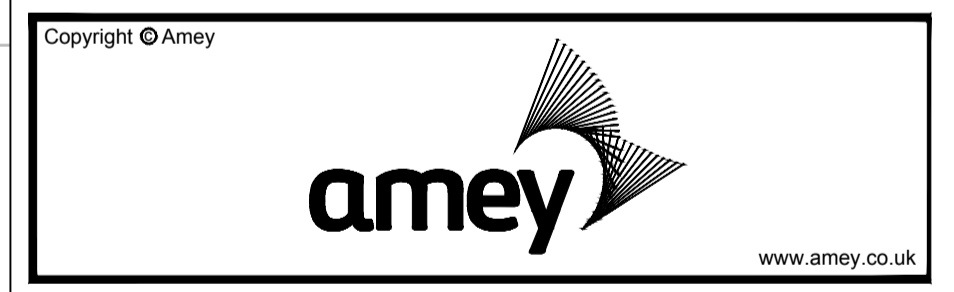
1. Please enter project specific hazards here.

NOTES

1. Please type your text here. Please type your text here. Please type your text here. Please type your text here. Please type your text here. Please type your text here. Please type your text here.
2. Please type your text here. Please type your text here. Please type your text here. Please type your text here. Please type your text here. Please type your text here. Please type your text here.
3. Please type your text here. Please type your text here. Please type your text here. Please type your text here. Please type your text here. Please type your text here. Please type your text here.

DRAFT

Rev	Revision details	Chkd	Appd	Date
Designed:	NM			Date: 18-05-2017
Drawn:	NM			Date: 18-05-2017
Checked:				Date: .
Approved:				Date: .



Client
DRD Transport NI
Eastern Division
Hydebank 4 Hospital Road
Belfast BT8 8JL (028) 9025 3000

transportni
Department for Infrastructure
www.transportni.gov.uk

Project Name
Downpatrick Eastern Distributor Road

Drawing Title
**Proposed Layout
Sheet 3 of 8**

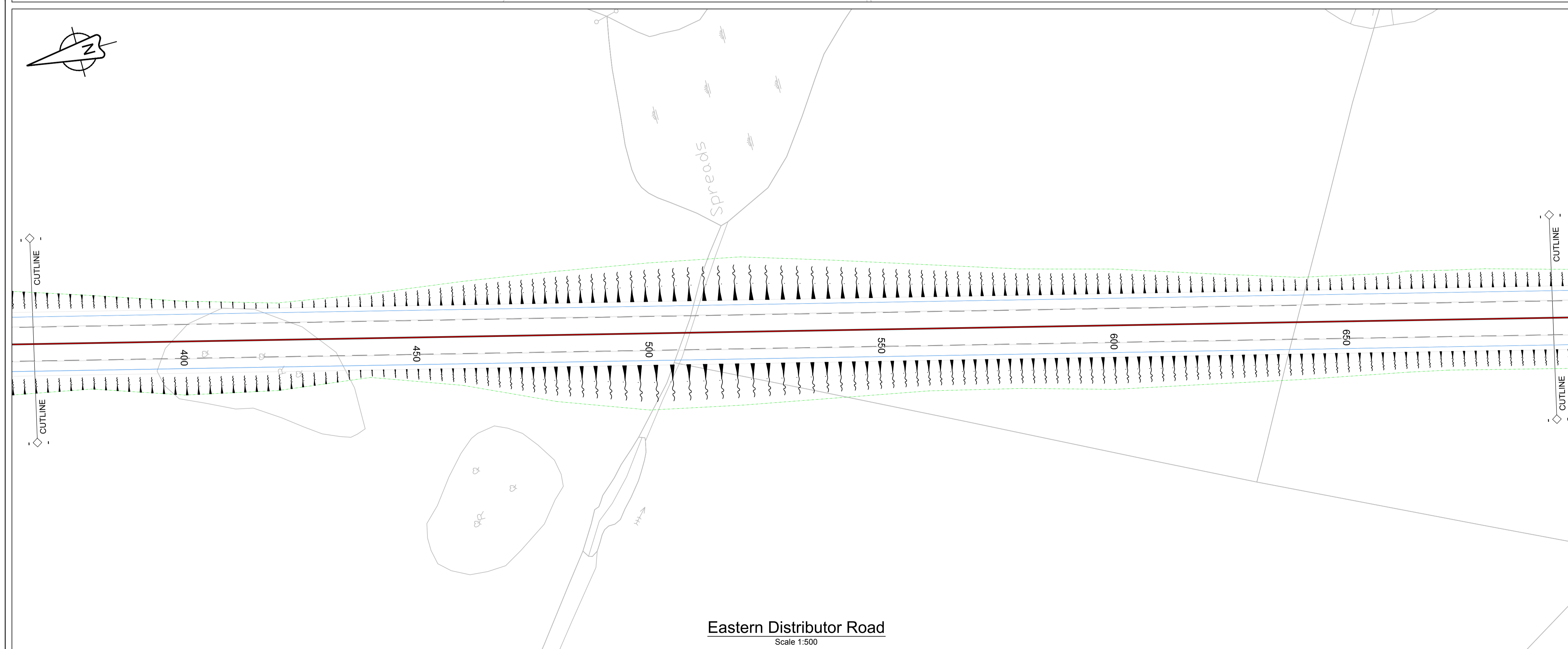
Original Drawing Size : A1	Scale : 1:500
Dimensions : -	

Drawing Status WORK-IN-PROGRESS	Suitability S0
---	-------------------

Drawing No 401425-H-F-103	Rev P01.1
-------------------------------------	--------------



Eastern Distributor Road
Scale 1:500



Eastern Distributor Road
Scale 1:500

RESIDUAL DESIGN HAZARDS
(The following information has been collected from Preconstruction Information and the Amey CDM Hazard Management Process.)

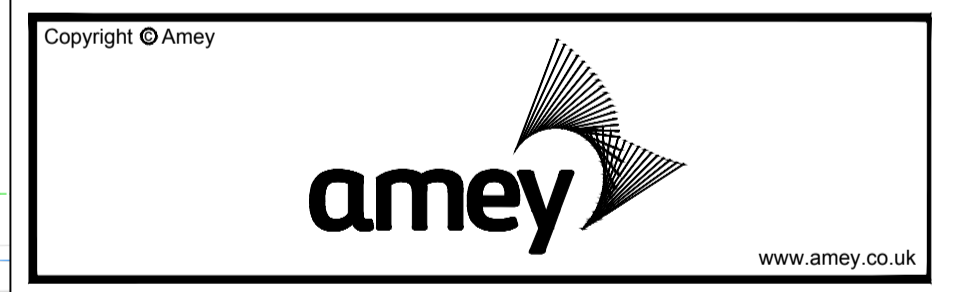
1. Please enter project specific hazards here.

NOTES

1. Please type your text here. Please type your text here. Please type your text here. Please type your text here. Please type your text here. Please type your text here. Please type your text here.
2. Please type your text here. Please type your text here. Please type your text here. Please type your text here. Please type your text here. Please type your text here. Please type your text here.
3. Please type your text here. Please type your text here. Please type your text here. Please type your text here. Please type your text here. Please type your text here. Please type your text here.

DRAFT

Rev	Revision details	Chkd	Appd	Date
Designed: NM				Date: 18-05-2017
Drawn: NM				Date: 18-05-2017
Checked:				Date:
Approved:				Date:



Client
DRD Transport NI
Eastern Division
Hydebank 4 Hospital Road
Belfast BT8 8JL (028) 9025 3000



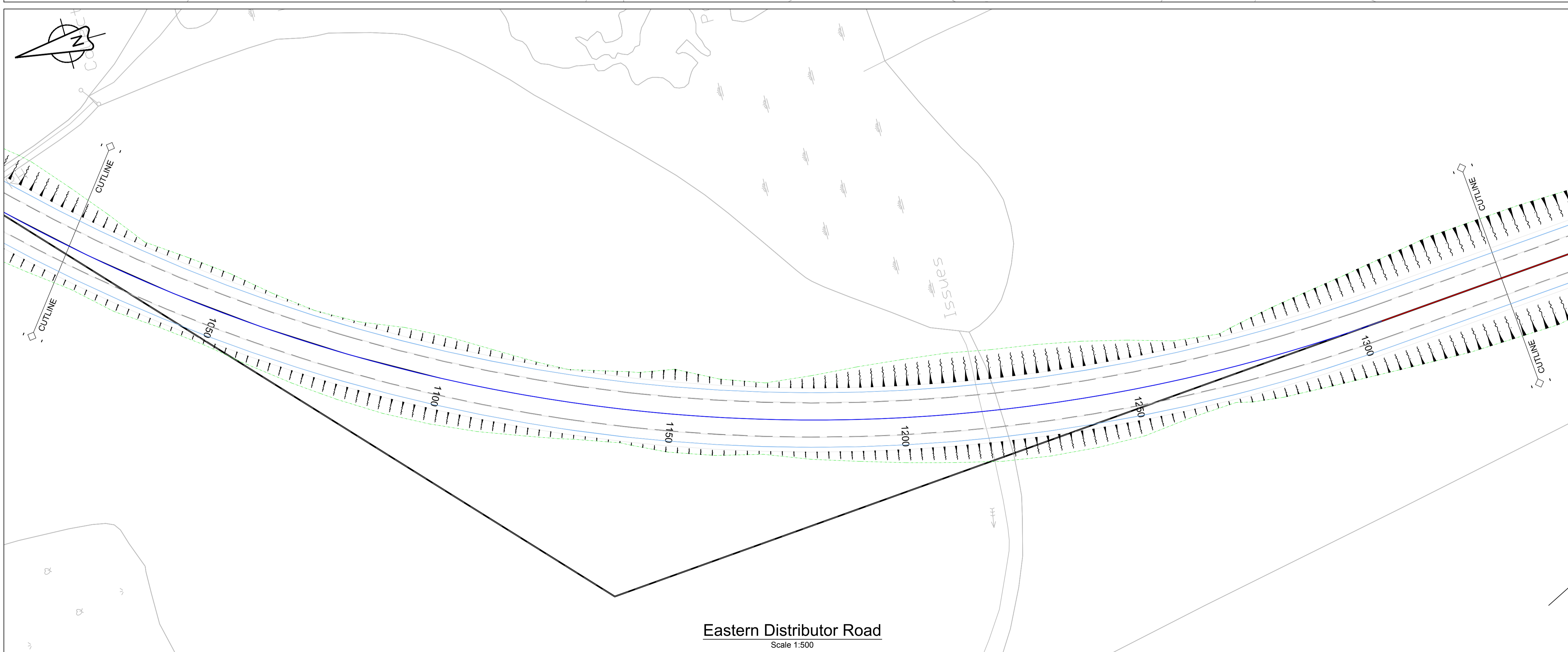
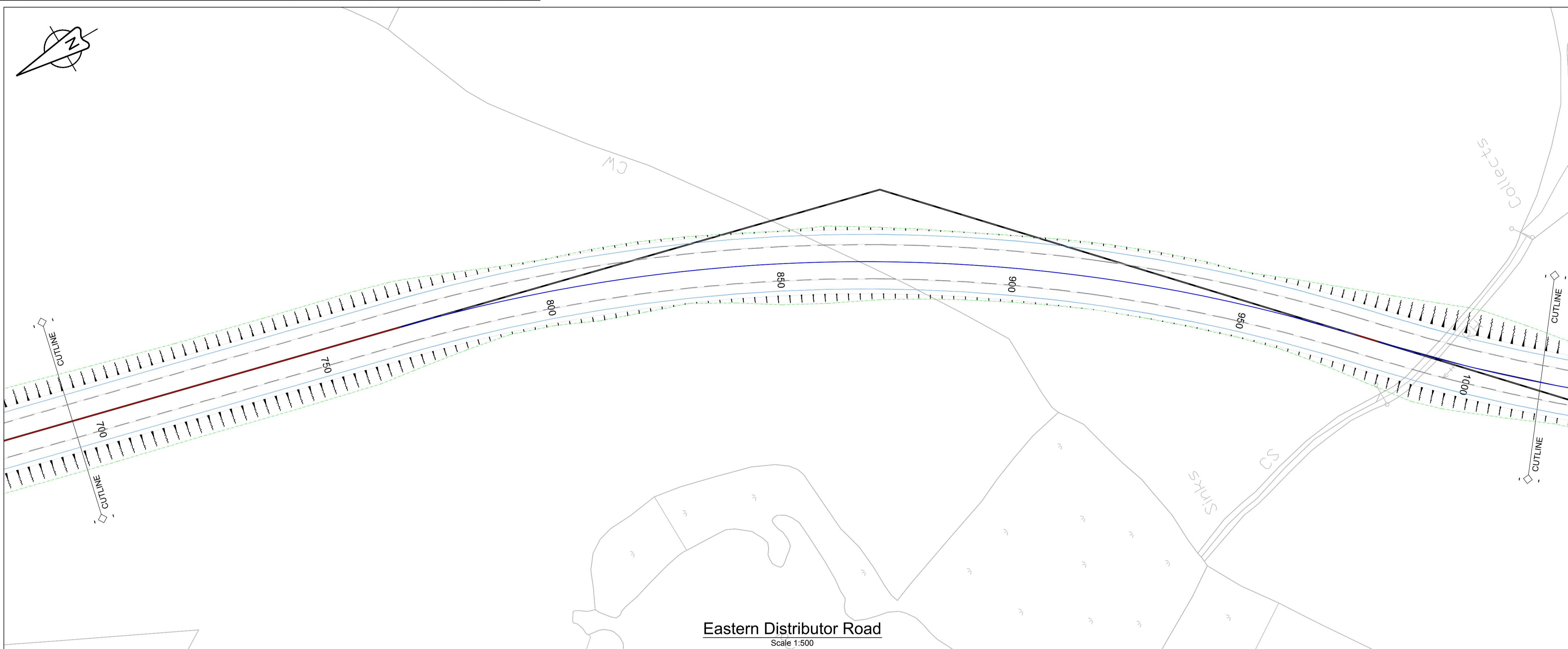

Project Name
Downpatrick Eastern Distributor Road

Drawing Title
**Proposed Layout
Sheet 4 of 8**

Original Drawing Size: A1 Scale: 1:500
Dimensions: -

Drawing Status
WORK-IN-PROGRESS Suitability
S0

Drawing No
401425-H-F-104 Rev
P01.1



RESIDUAL DESIGN HAZARDS
(The following information has been collected from Preconstruction Information and the Amey CDM Hazard Management Process.)

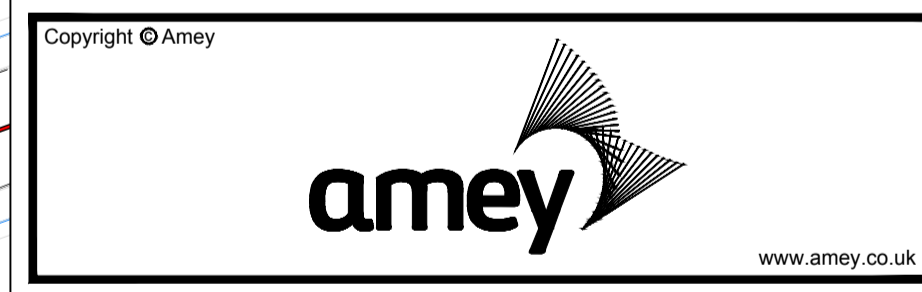
1. Please enter project specific hazards here.

NOTES

1. Please type your text here. Please type your text here. Please type your text here. Please type your text here. Please type your text here. Please type your text here. Please type your text here.
2. Please type your text here. Please type your text here. Please type your text here. Please type your text here. Please type your text here. Please type your text here. Please type your text here.
3. Please type your text here. Please type your text here. Please type your text here. Please type your text here. Please type your text here. Please type your text here. Please type your text here.

DRAFT

Rev	Revision details	Chkd	Appd	Date
Designed:	NM			Date: 18-05-2017
Drawn:	NM			Date: 18-05-2017
Checked:				Date: .
Approved:				Date: .



Client
DRD Transport NI
Eastern Division
Hydebank 4 Hospital Road
Belfast BT8 8JL (028) 9025 3000

transportni
Department for Infrastructure
www.transportni.gov.uk

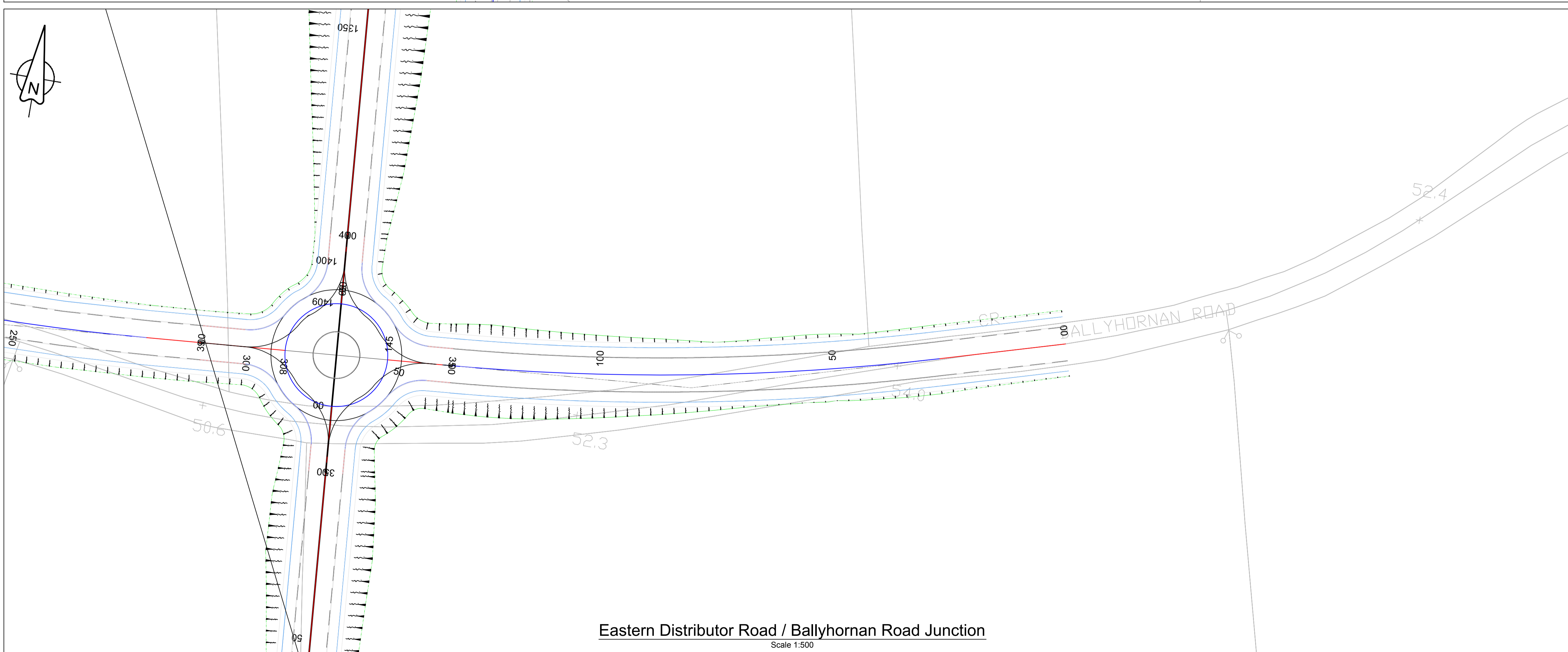
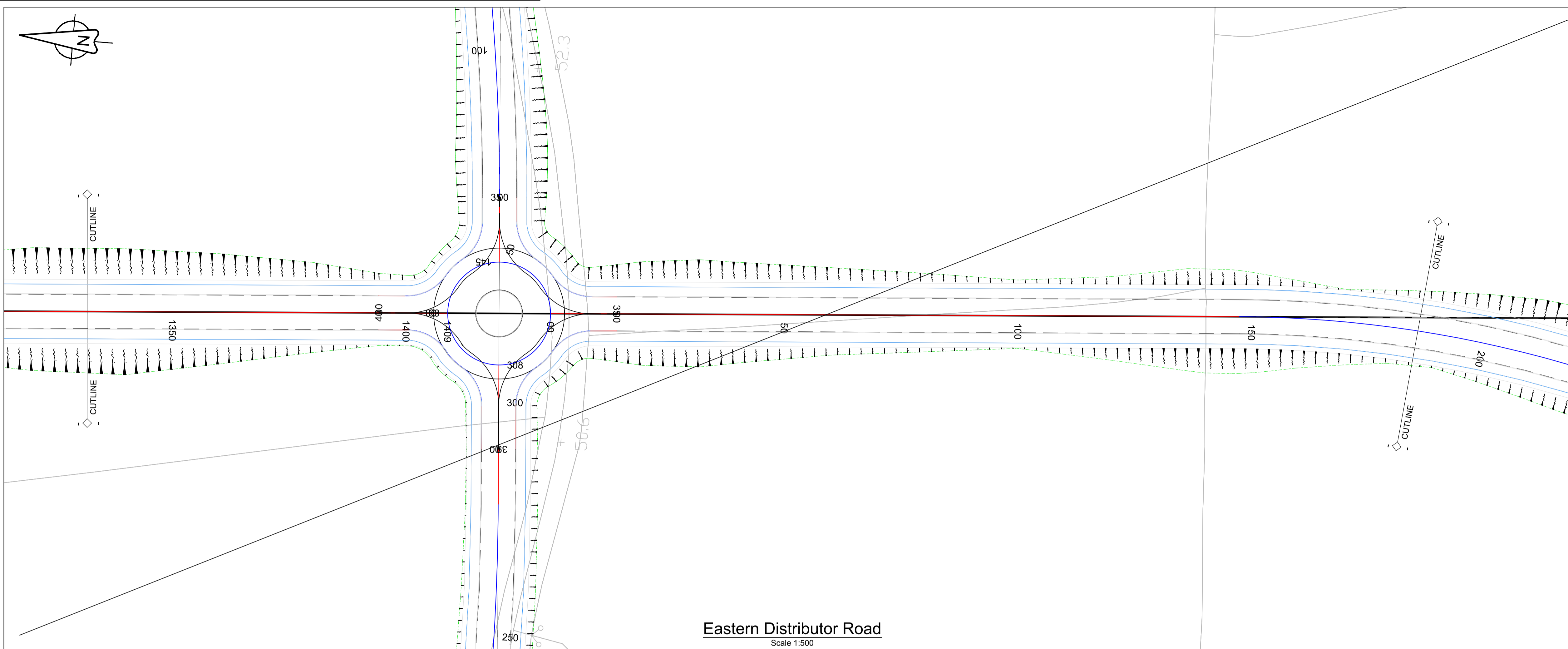
Project Name
Downpatrick Eastern Distributor Road

Drawing Title
**Proposed Layout
Sheet 5 of 8**

Original Drawing Size : A1 Scale : 1:500
Dimensions : -

Drawing Status
WORK-IN-PROGRESS Suitability
S0

Drawing No
401425-H-F-105 Rev
P01.1



RESIDUAL DESIGN HAZARDS
(The following information has been collected from Preconstruction Information and the Amey CDM Hazard Management Process.)

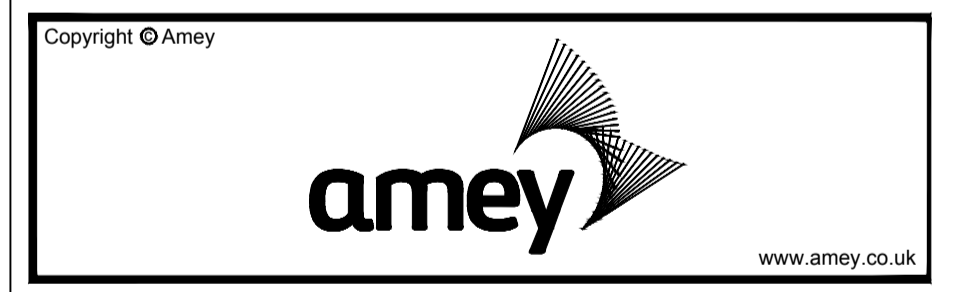
1. Please enter project specific hazards here.

NOTES

1. Please type your text here. Please type your text here. Please type your text here. Please type your text here. Please type your text here. Please type your text here. Please type your text here.
2. Please type your text here. Please type your text here. Please type your text here.
3. Please type your text here. Please type your text here. Please type your text here.

DRAFT

Rev	Revision details	Chkd	Appd	Date
Designed: NM				Date: 18-05-2017
Drawn: NM				Date: 18-05-2017
Checked:				Date:
Approved:				Date:



Client
DRD Transport NI
Eastern Division
Hydebank 4 Hospital Road
Belfast BT8 8JL (028) 9025 3000

transportni
Department for Infrastructure
www.transportni.gov.uk

Project Name
Downpatrick Eastern Distributor Road

Drawing Title
**Proposed Layout
Sheet 6 of 8**

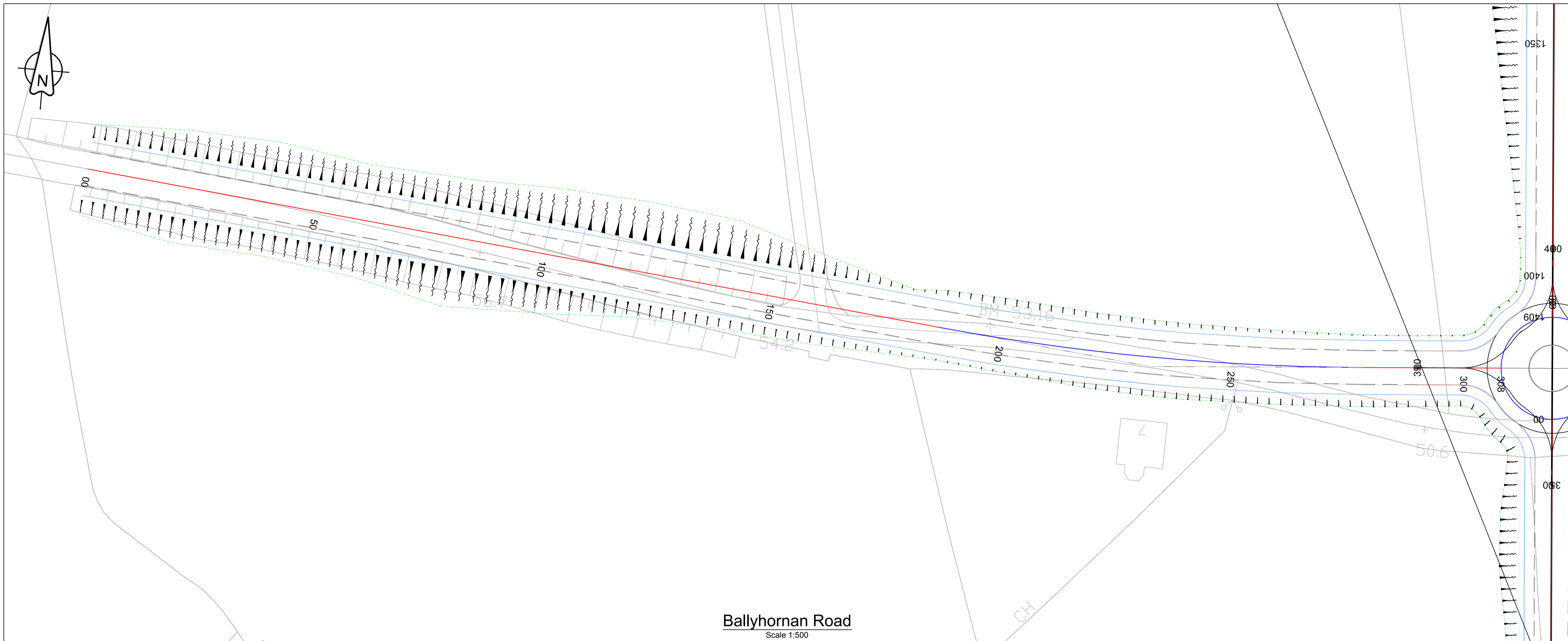
Original Drawing Size: A1 Scale: 1:2000
Dimensions: -

Drawing Status
WORK-IN-PROGRESS

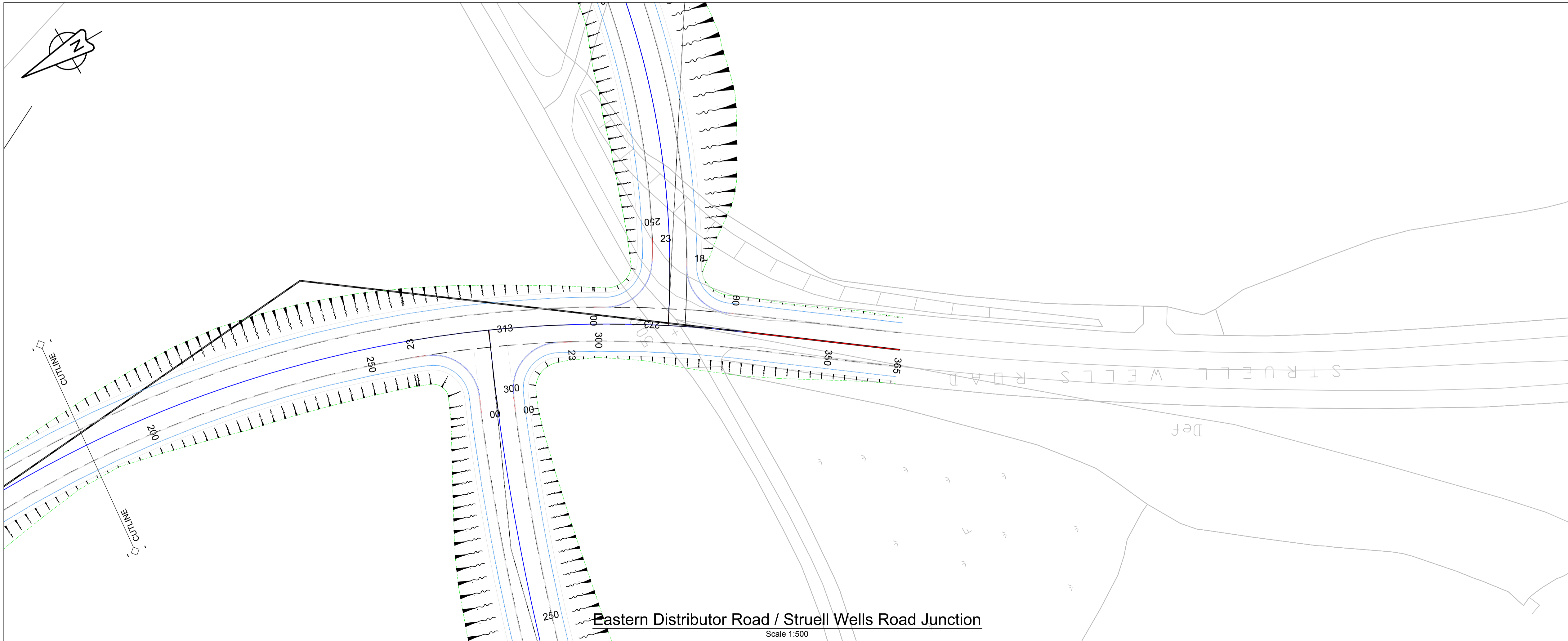
Suitability
S0

Drawing No
401425-H-F-106

Rev
P01.1



Ballyhorgan Road
Scale 1:500



Eastern Distributor Road / Struell Wells Road Junction
Scale 1:500

RESIDUAL DESIGN HAZARDS

(The following information has been collected from Preconstruction Information and the Amey CDM Hazard Management Process.)

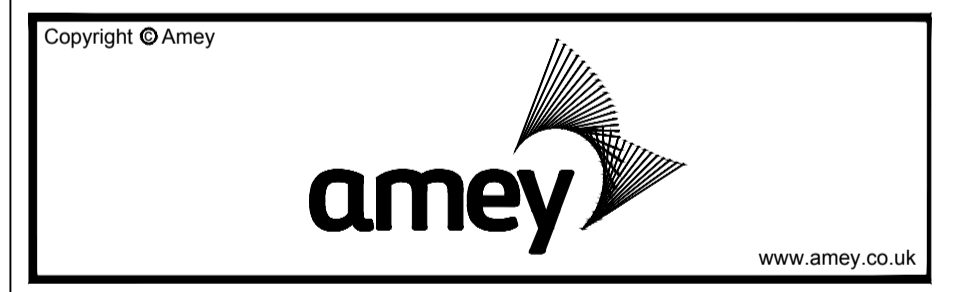
1. Please enter project specific hazards here.

NOTES

1. Please type your text here. Please type your text here. Please type your text here. Please type your text here. Please type your text here. Please type your text here. Please type your text here.
2. Please type your text here. Please type your text here. Please type your text here. Please type your text here. Please type your text here. Please type your text here. Please type your text here.
3. Please type your text here. Please type your text here. Please type your text here. Please type your text here. Please type your text here. Please type your text here. Please type your text here.

DRAFT

Rev	Revision details	Chkd	Appd	Date
Designed:	NM			Date: 18-05-2017
Drawn:	NM			Date: 18-05-2017
Checked:				Date: .
Approved:				Date: .



Client
 DRD Transport NI
 Eastern Division
 Hydebank 4 Hospital Road
 Belfast BT8 8JL (028) 9025 3000



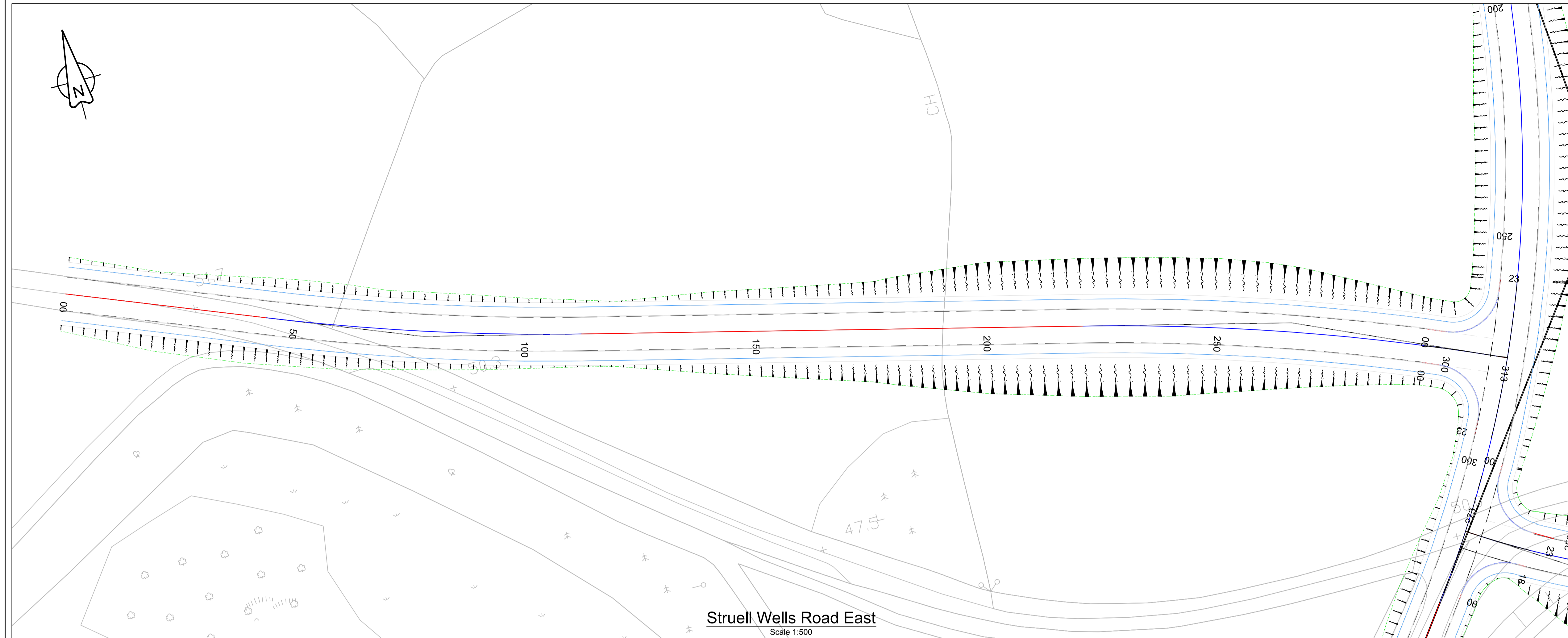

Project Name
Downpatrick Eastern Distributor Road

Drawing Title
**Proposed Layout
 Sheet 7 of 8**

Original Drawing Size : A1	Scale : 1:500
Dimensions : -	

Drawing Status WORK-IN-PROGRESS	Suitability S0
---	-------------------

Drawing No 401425-H-F-107	Rev P01.1
-------------------------------------	--------------

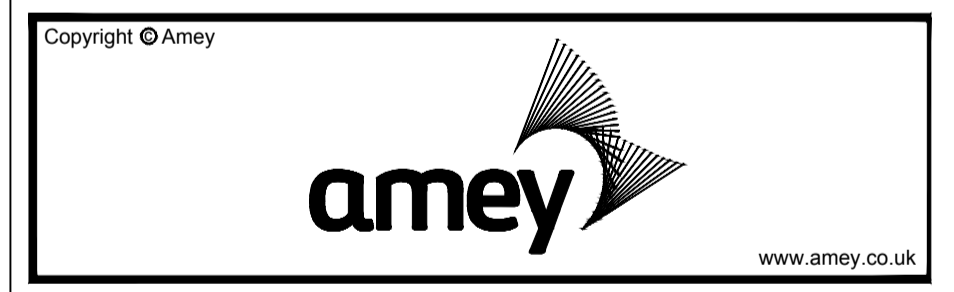


RESIDUAL DESIGN HAZARDS
 (The following information has been collected from Preconstruction Information and the Amey CDM Hazard Management Process.)

1. Please enter project specific hazards here.
- NOTES**
1. Please type your text here. Please type your text here. Please type your text here. Please type your text here. Please type your text here. Please type your text here. Please type your text here.
 2. Please type your text here. Please type your text here. Please type your text here. Please type your text here. Please type your text here. Please type your text here. Please type your text here.
 3. Please type your text here. Please type your text here. Please type your text here. Please type your text here. Please type your text here. Please type your text here. Please type your text here.

DRAFT

Rev	Revision details	Chkd	Appd	Date
Designed: NM				Date: 18-05-2017
Drawn: NM				Date: 18-05-2017
Checked: .				Date: .
Approved: .				Date: .



Client
 DRD Transport NI
 Eastern Division
 Hydebank 4 Hospital Road
 Belfast BT8 8JL (028) 9025 3000




Project Name
Downpatrick Eastern Distributor Road

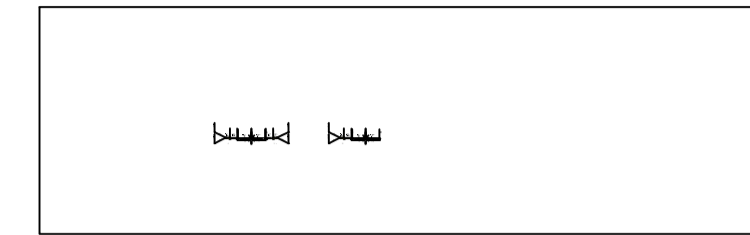
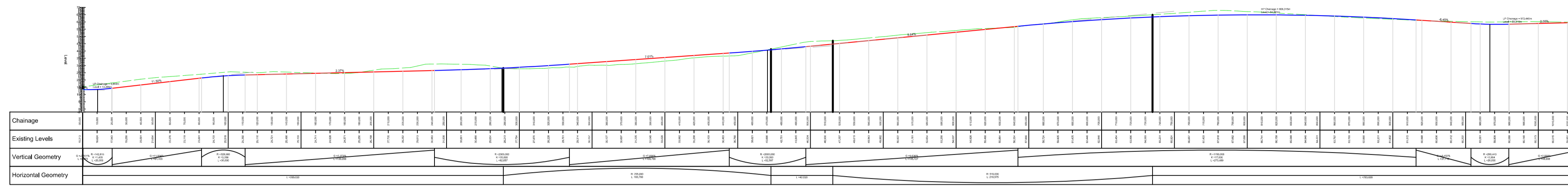
Drawing Title
**Proposed Layout
 Sheet 8 of 8**

Original Drawing Size : A1 Scale : 1:500
 Dimensions : -

Drawing Status
WORK-IN-PROGRESS Suitability
 S0

Drawing No
401425-H-F-108 Rev
 P01.1

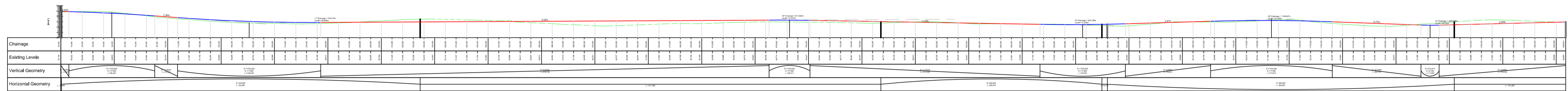
ALIGNMENT - 1 - LONGSECTION
SCALE: H 1:500 V 1:500, DATUM: -2.000



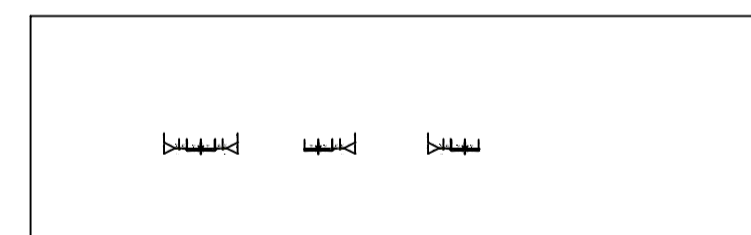
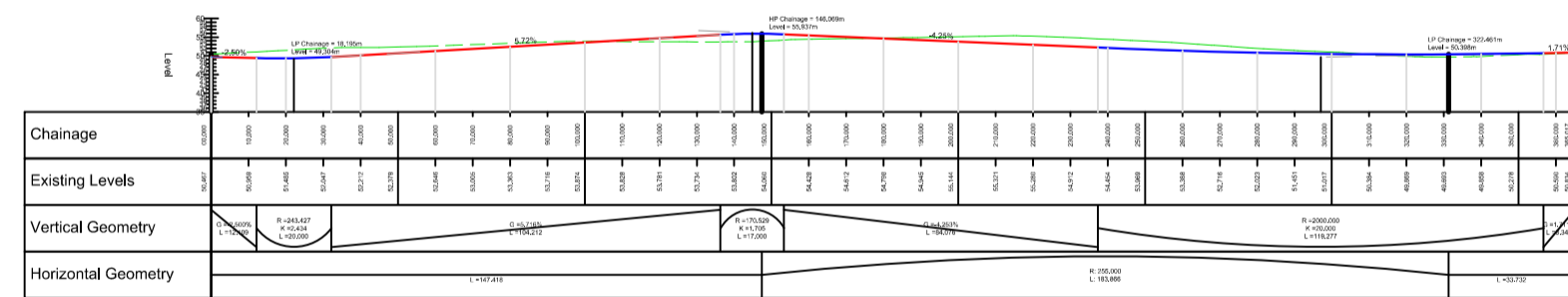
ALIGNMENT - 1A - LONGSECTION
SCALE: H 1:500 V 1:500, DATUM: 55.000

Chainage	0+00	0+10	0+20	0+30	0+40	0+50	0+60	0+70	0+80	0+90	1+00
Existing Levels	55.00	55.00	55.00	55.00	55.00	55.00	55.00	55.00	55.00	55.00	55.00
Vertical Geometry	[Vertical curve data]										
Horizontal Geometry	[Horizontal curve data]										

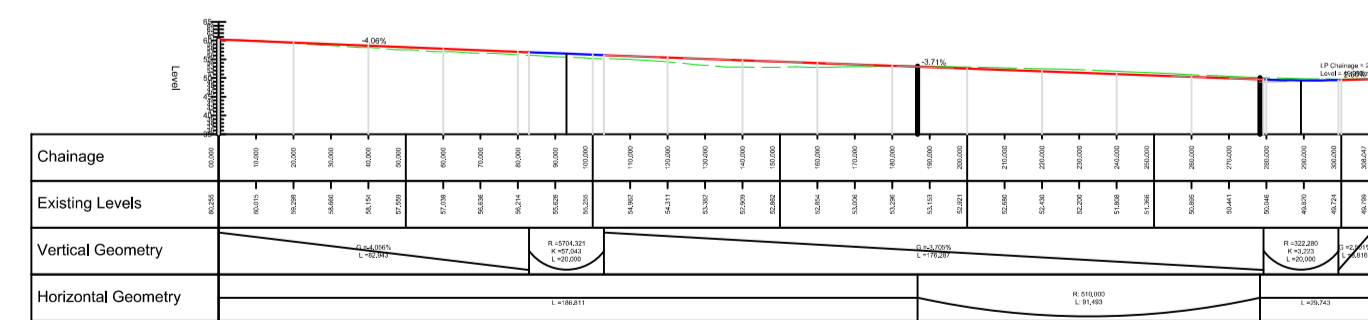
ALIGNMENT - 2 - LONGSECTION
SCALE: H 1:500 V 1:500, DATUM: 35.000

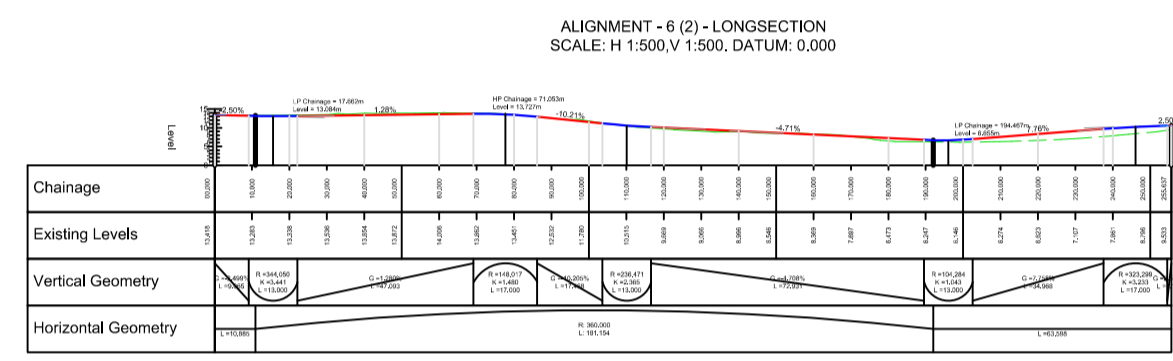
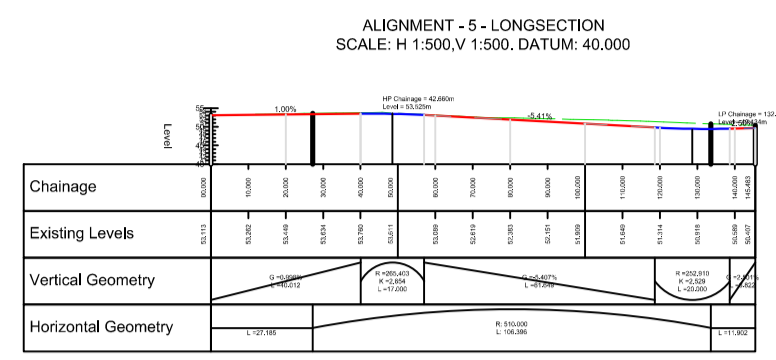


ALIGNMENT - 3 - LONGSECTION
SCALE: H 1:500 V 1:500, DATUM: 35.000

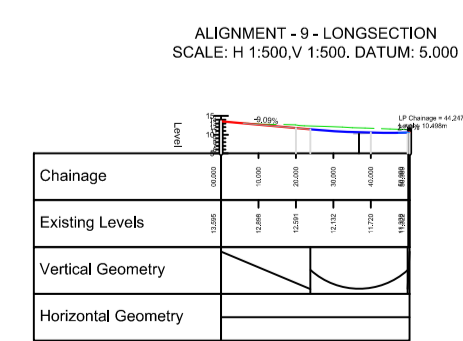
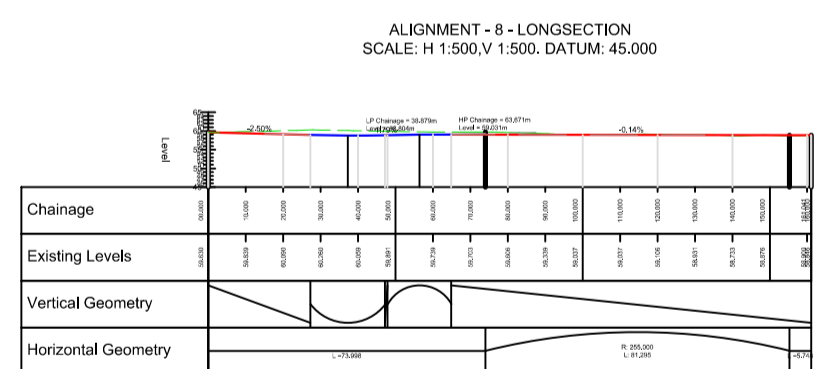
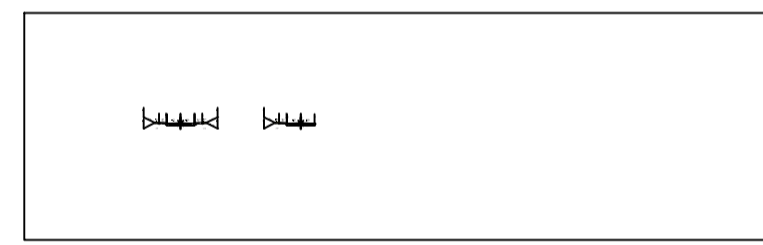
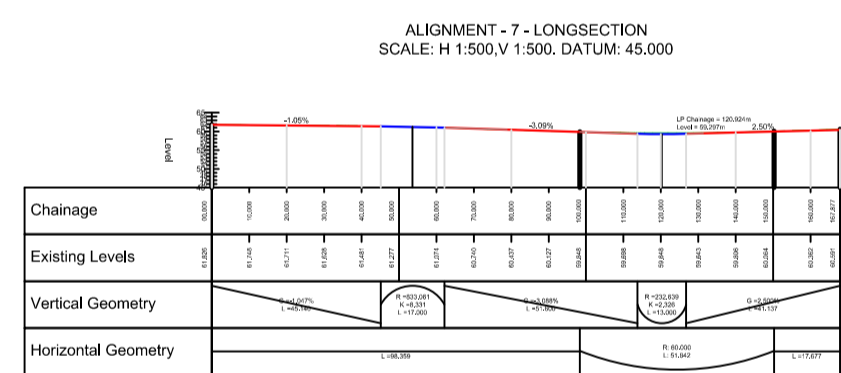


ALIGNMENT - 4 - LONGSECTION
SCALE: H 1:500 V 1:500, DATUM: 35.000

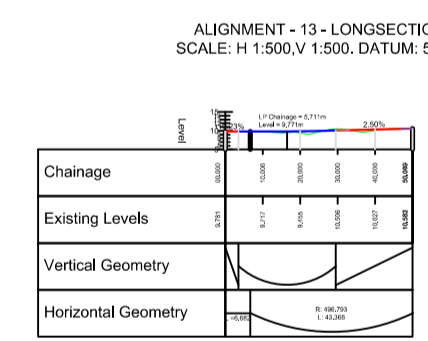
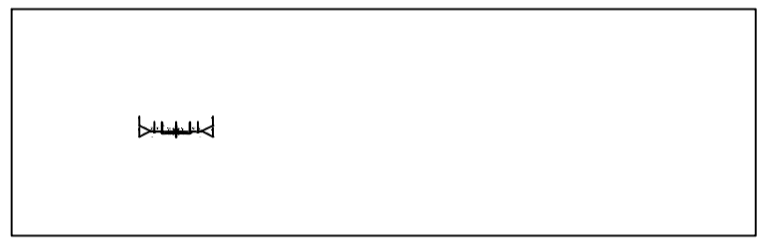
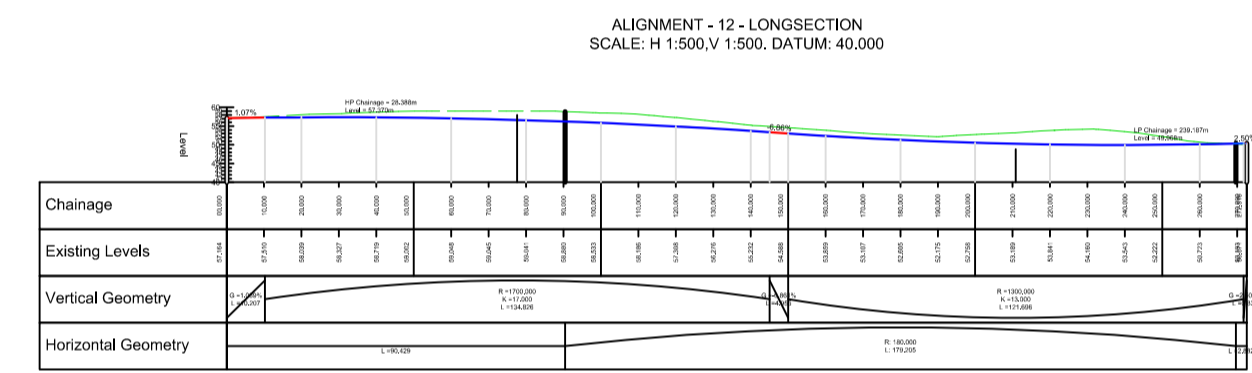
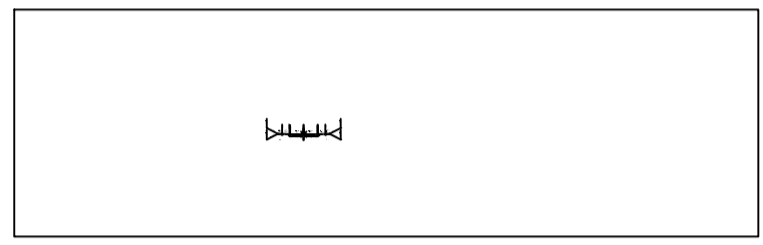
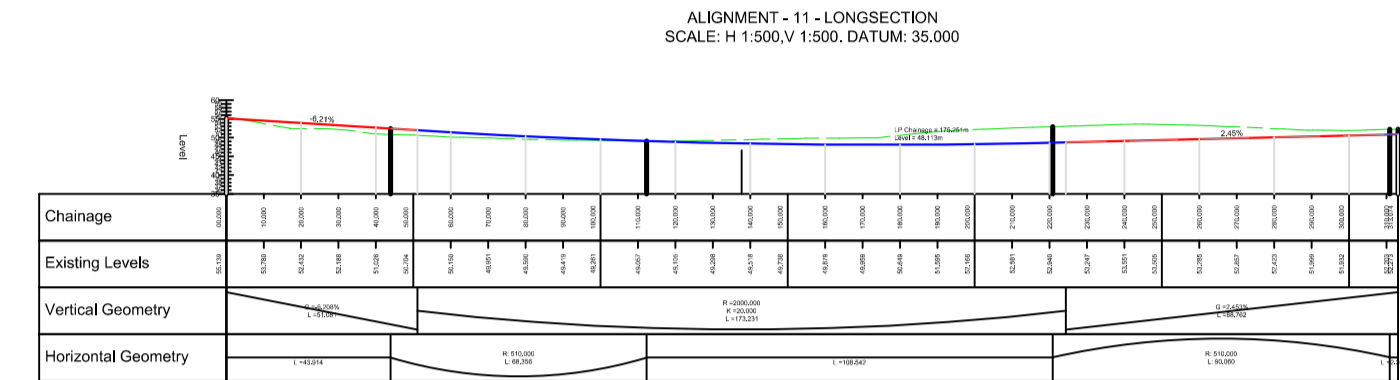
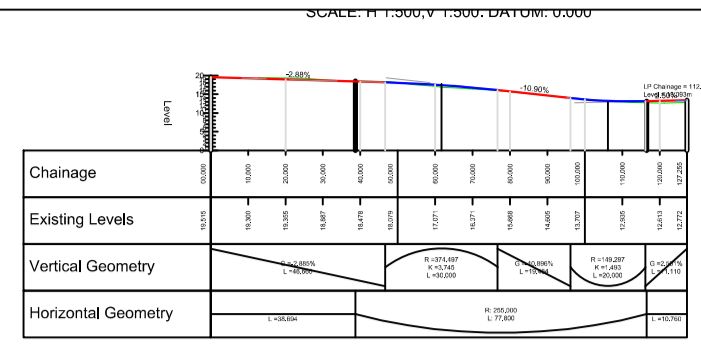




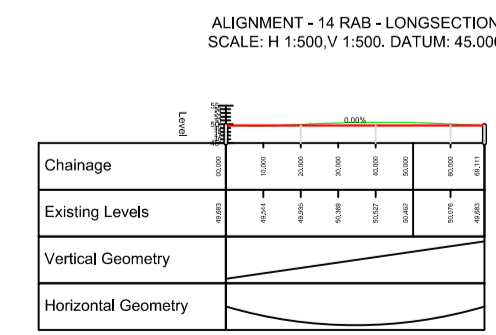
1:1000



1:1000

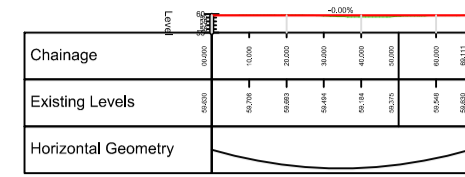


1:1000

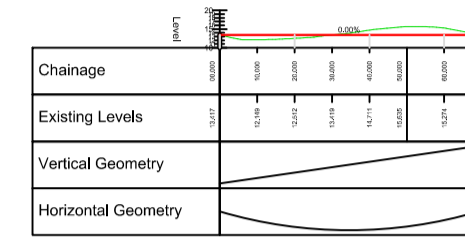


1:1000

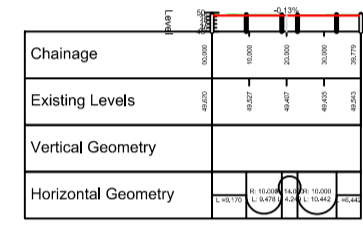
ALIGNMENT - 15 RAB - LONGSECTION
SCALE: H 1:500, V 1:500, DATUM: 55.000



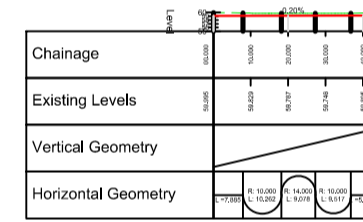
ALIGNMENT - 16 RAB - LONGSECTION
SCALE: H 1:500, V 1:500, DATUM: 10.000



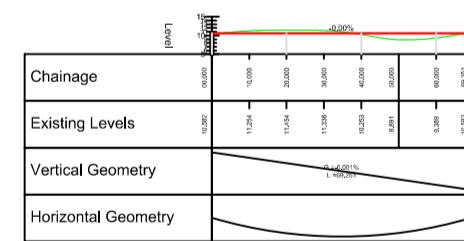
ALIGNMENT - 17 (3) - LONGSECTION
SCALE: H 1:500, V 1:500, DATUM: 45.000



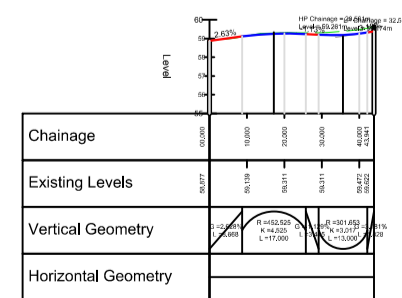
ALIGNMENT - 21 - LONGSECTION
SCALE: H 1:500, V 1:500, DATUM: 55.000



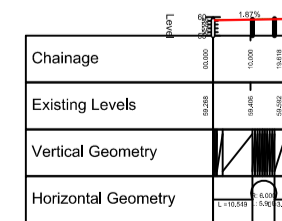
ALIGNMENT - 24 RAB - LONGSECTION
SCALE: H 1:500, V 1:500, DATUM: 5.000



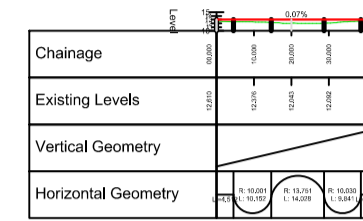
ALIGNMENT - 31 - LONGSECTION
SCALE: H 1:500, V 1:100, DATUM: 55.000



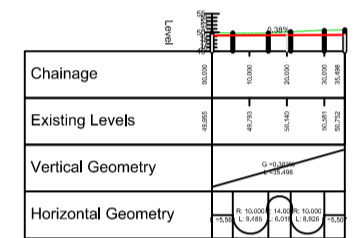
ALIGNMENT - 31A - LONGSECTION
SCALE: H 1:500, V 1:500, DATUM: 55.000



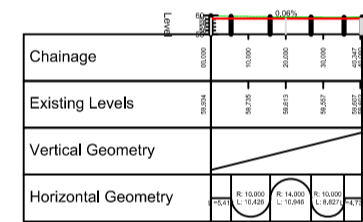
ALIGNMENT - 25 - LONGSECTION
SCALE: H 1:500, V 1:500, DATUM: 10.000



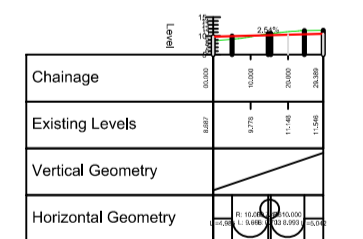
ALIGNMENT - 18 - LONGSECTION
SCALE: H 1:500, V 1:500, DATUM: 45.000



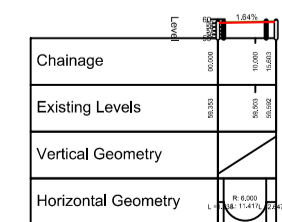
ALIGNMENT - 22 - LONGSECTION
SCALE: H 1:500, V 1:500, DATUM: 55.000



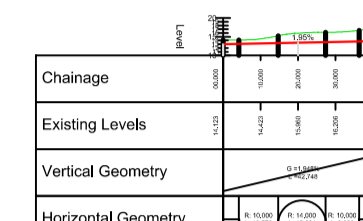
ALIGNMENT - 28 - LONGSECTION
SCALE: H 1:500, V 1:500, DATUM: 5.000



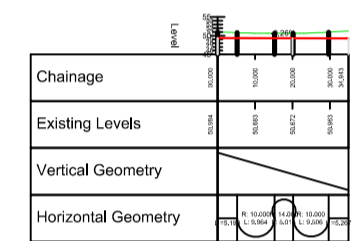
ALIGNMENT - 31B - LONGSECTION
SCALE: H 1:500, V 1:500, DATUM: 55.000



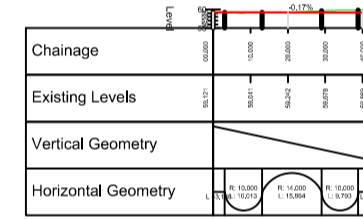
ALIGNMENT - 26 - LONGSECTION
SCALE: H 1:500, V 1:500, DATUM: 10.000



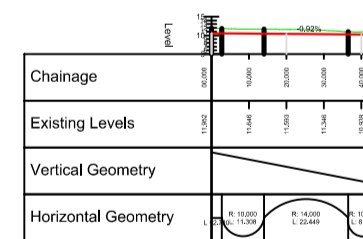
ALIGNMENT - 19 - LONGSECTION
SCALE: H 1:500, V 1:500, DATUM: 45.000



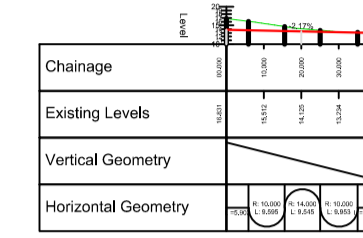
ALIGNMENT - 23 - LONGSECTION
SCALE: H 1:500, V 1:500, DATUM: 55.000



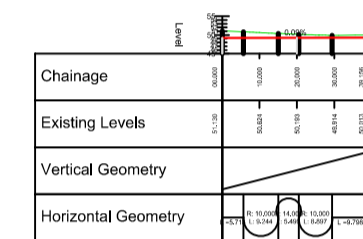
ALIGNMENT - 29 - LONGSECTION
SCALE: H 1:500, V 1:500, DATUM: 5.000



ALIGNMENT - 27 - LONGSECTION
SCALE: H 1:500, V 1:500, DATUM: 10.000



ALIGNMENT - 20 - LONGSECTION
SCALE: H 1:500, V 1:500, DATUM: 45.000



ALIGNMENT - 30 - LONGSECTION
SCALE: H 1:500, V 1:500, DATUM: 0.000

